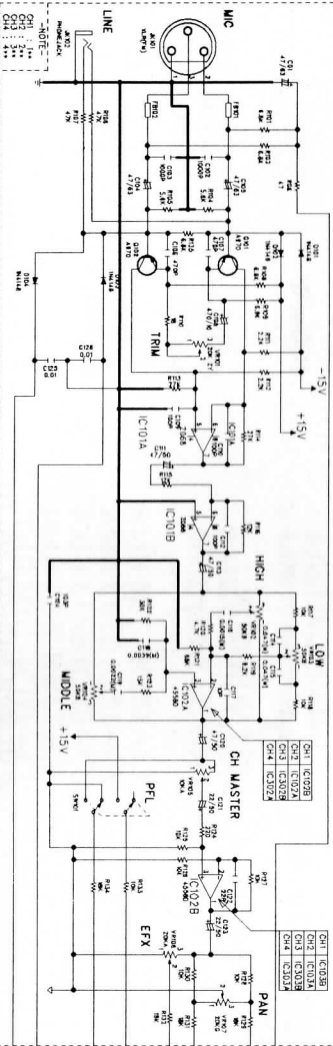
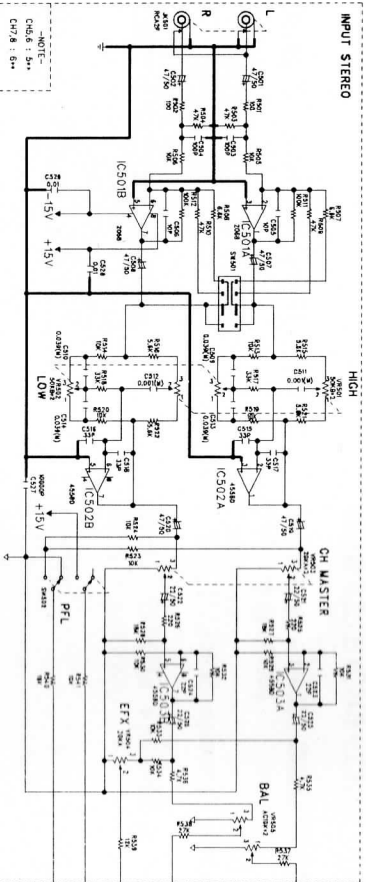


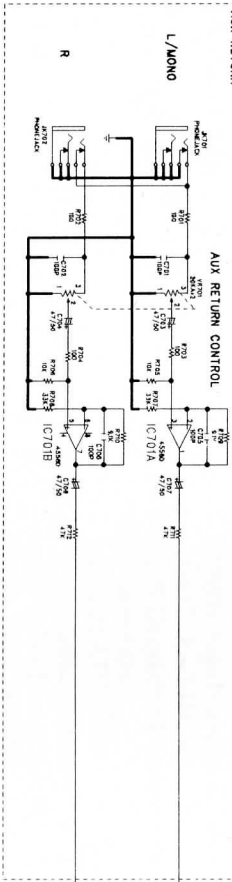
# INPUT MONO



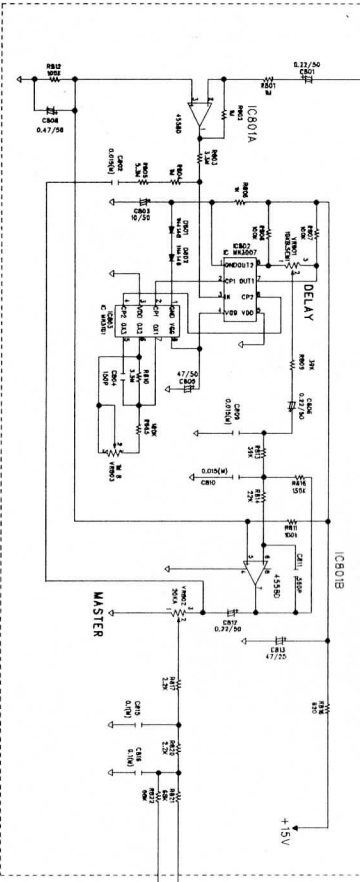
# INPUT STEREO



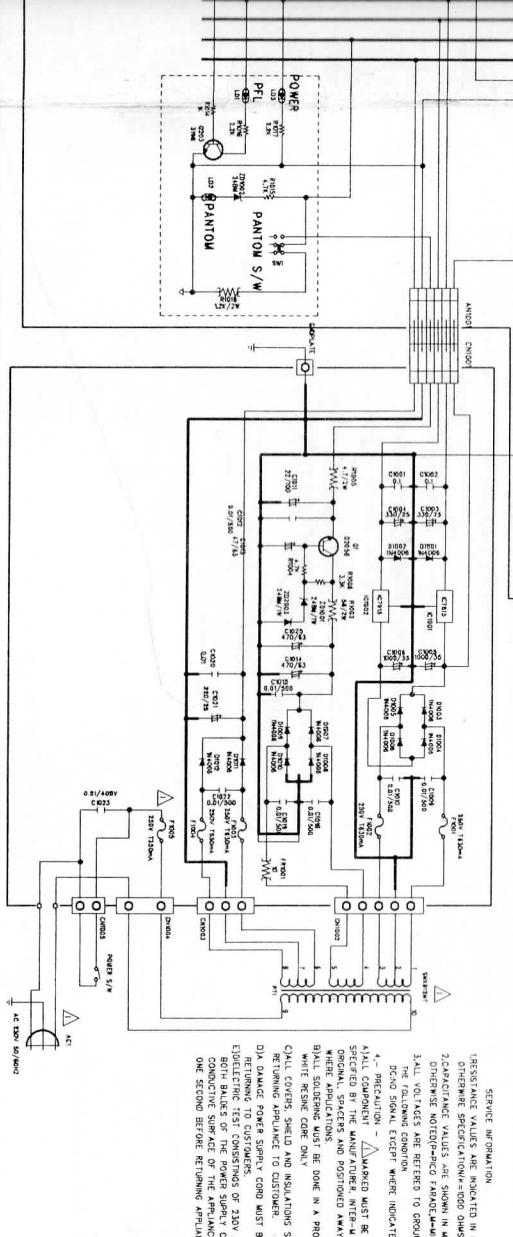
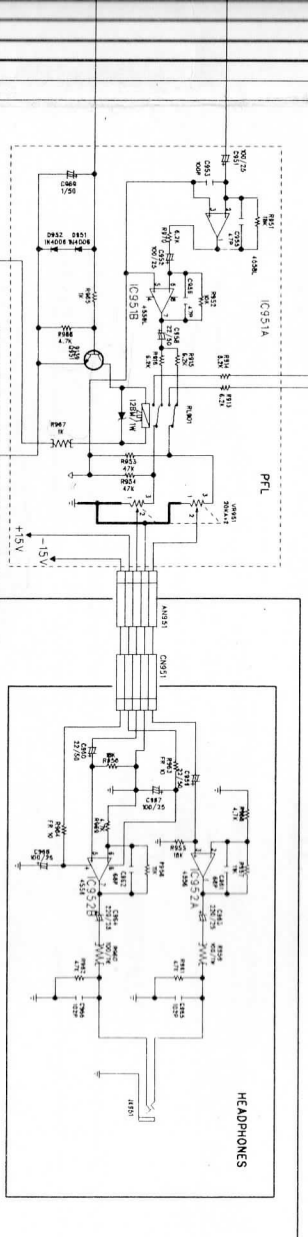
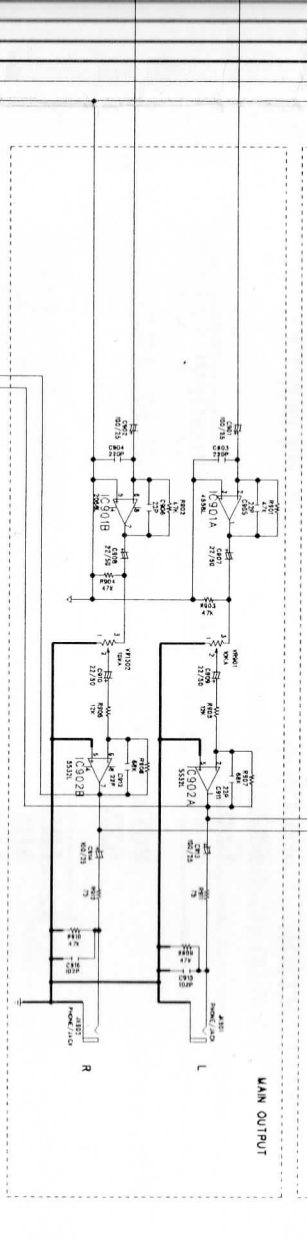
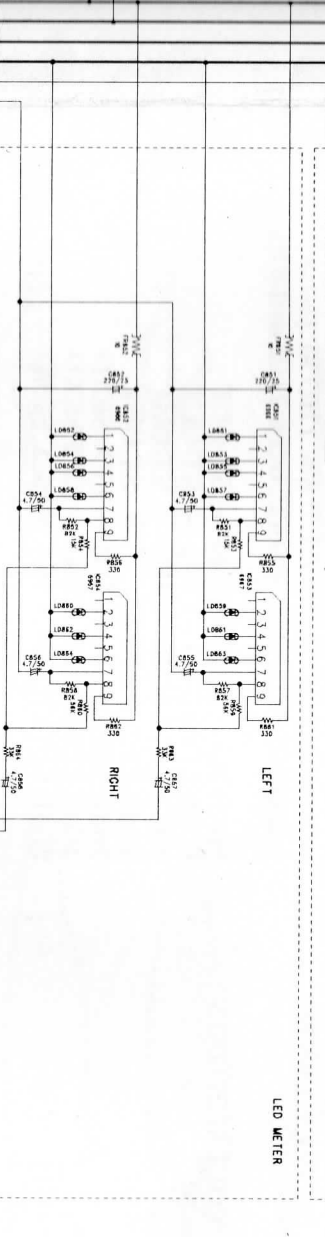
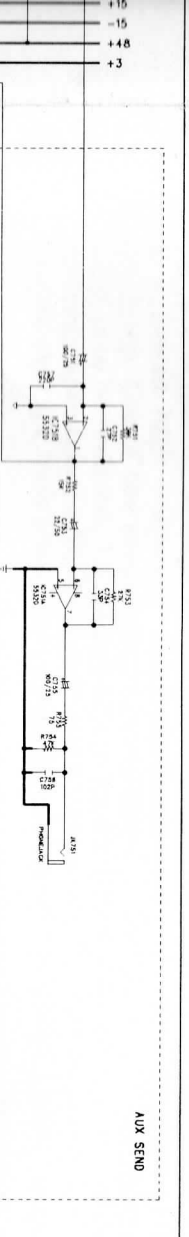
# AUX RETURN



# EFFECT



L  
R  
EFX  
PFL  
PFLCON  
+15  
-15  
+48  
+3



SERVICE INFORMATION

1. RESISTOR VALUES INDICATED IN OHMS UNLESS OTHERWISE SPECIFICATED (100 OHMS, 1K, 100K, 1M, 1000 OHMS)

2. CAPACITANCE VALUES ARE SHOWN IN MICROFARADS UNLESS OTHERWISE NOTED (PICO-FARAD, NANO-FARAD)

3. ALL VOLTAGES ARE REFERRED TO GROUND UNLESS OTHERWISE INDICATED

4. DO NOT SIGNAL EXCEPT WHERE INDICATED AC RMS

5. ALL COMPONENTS -  $\Delta$  MARKED MUST BE REPLACED ONLY WITH ORIGINAL TYPE SPECIFIED BY THE MANUFACTURER, INTER-AM CORPORATION AND INSTALLER AS THE ORIGINAL, SPACERS AND POSITIONED AWAY FROM ADJACENT COMPONENTS

6. BALL SOLDERING MUST BE DONE IN A PROFESSIONAL WANNER USING SOLDER WHITE RESIN CORE ONLY

7. CALL COVERS, SHIELD AND INSULATIONS SPACERS MUST BE REPLACED BEFORE

8. DAMAGE POWER SUPPLY CORD MUST BE REPLACED BEFORE

9. BOTH BULBS OF THE POWER SUPPLY CORD ATTACHMENT PLUG THE EXPOSED CONDUCTIVE SURFACE OF THE APPLIANCE FOR A PERIOD OF NOT LESS THAN ONE SECOND BEFORE RETURNING APPLIANCE TO CUSTOMER.