



FUTURELIGHT

DOMINATOR II.

Service-manual

Serviceunterlagen

Documents techniques

Service-documents for FUTURELIGHT Dominator II.

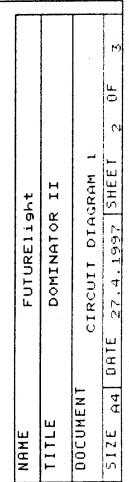


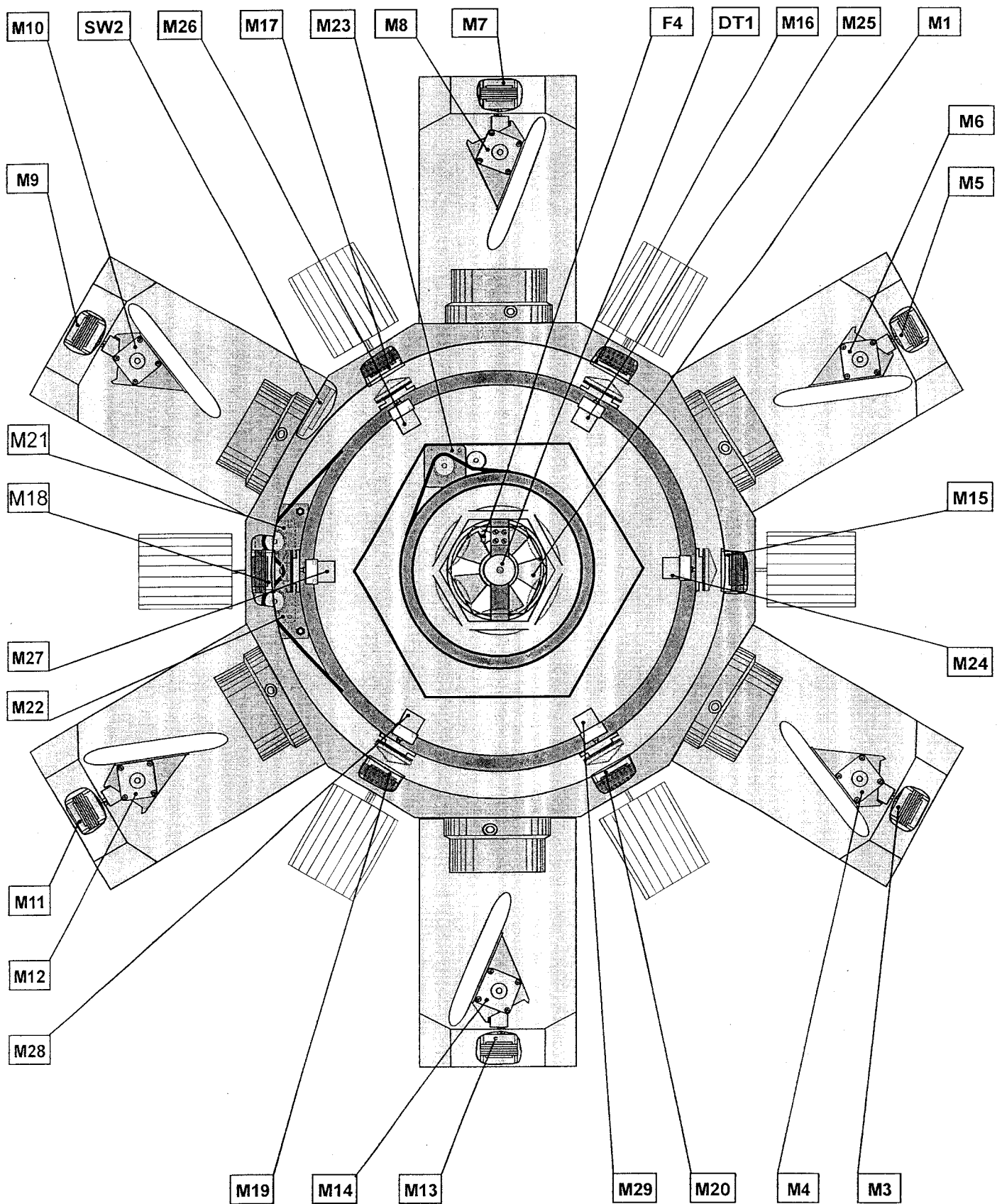
27,4,1997

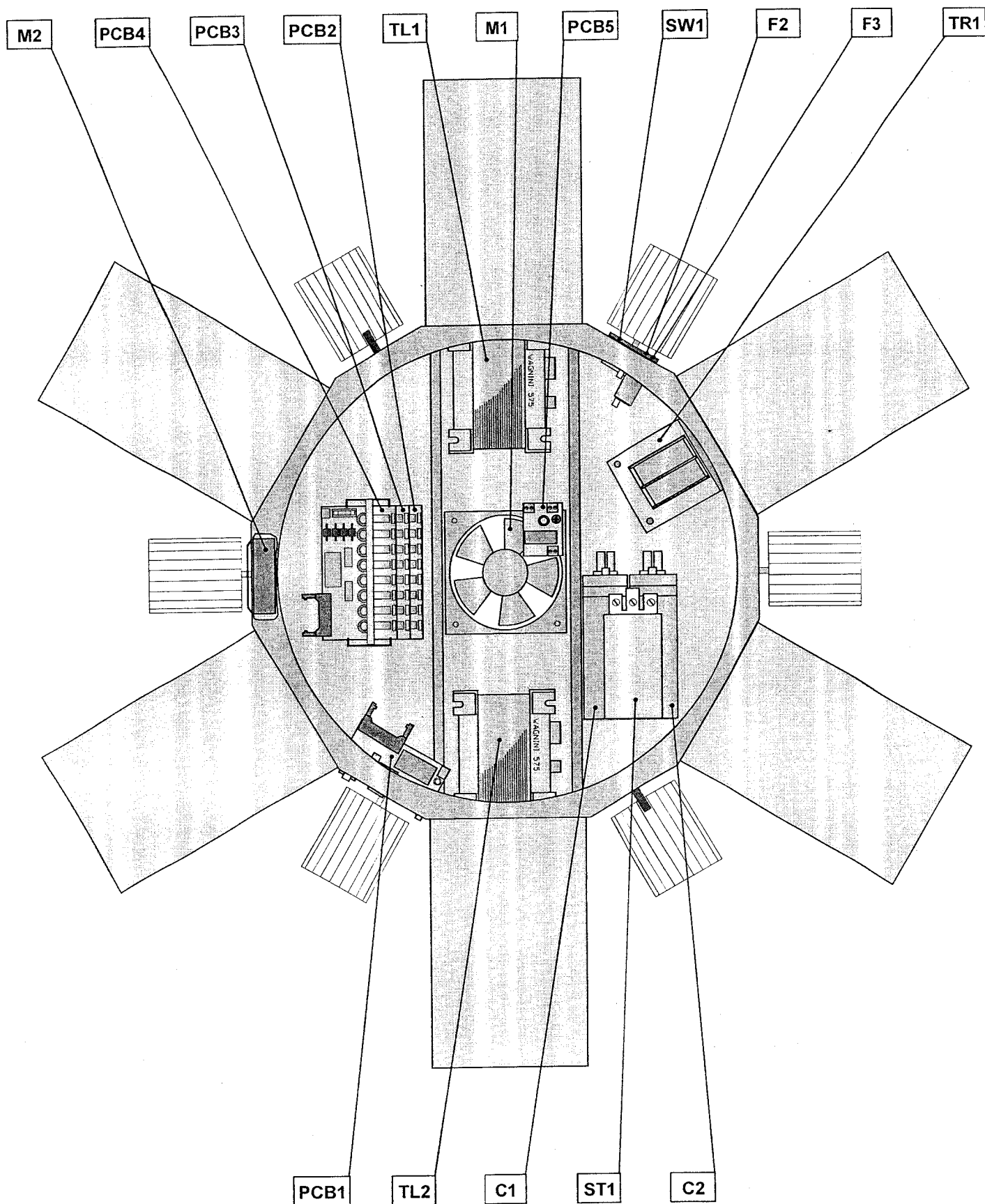
LIST OF MATERIALS FOR PCB2 DOMINATOR II

Document No.:1

| POS. | ARTICAL | TYPE | DESCRIPTION | Q'TY | SPARE PARTS No. |
|------|---------|----------------|-------------------------------|------|-----------------|
| 1 | IC1 | PIC 16C57 HS/P | MICROCONTROLLER | 1 | |
| 2 | IC2 | 74HC00 | 4xNAND | 2 | Exxxxxxx |
| 3 | IC3 | | | | |
| 4 | IC4 | | | | |
| 5 | IC5 | | | | |
| 6 | IC6 | | | | |
| 7 | IC7 | | | | |
| 8 | IC8 | | | | |
| 9 | IC9 | | | | |
| 10 | IC10 | L293D | MOTOR DRIVER | 8 | Exxxxxxx |
| 11 | IC11 | | | | |
| 12 | IC12 | LM7805 | INTEGRATED VOLTAGE REGULATOR | 1 | Exxxxxxx |
| | | | | | |
| 13 | D1 | P600B | RECTIFIER DIODE | 4 | |
| 14 | D2 | | | | |
| 15 | D3 | | | | |
| 16 | D4 | | | | |
| 17 | D5 | | | | |
| | | | | | |
| 18 | R1 | 22K | RESISTOR SMA0207 | 1 | |
| 19 | R2 | 820R | RESISTOR SMA0207 | 1 | |
| | | | | | |
| 20 | C1 | 47µF | ELECTROLYTIC CAPACITOR "ELRA" | 1 | |
| 21 | C2 | 2µ2 | ELECTROLYTIC CAPACITOR "ELRA" | 1 | |
| 22 | C3 | 15p | CAPACITOR SMD | 2 | |
| 23 | C4 | | | | |
| 24 | C5 | | | | |
| 25 | C6 | | | | |
| 26 | C7 | | | | |
| 27 | C8 | | | | |
| 28 | C9 | | | | |
| 29 | C10 | | | | |
| 30 | C11 | 2G2 | ELECTROLYTIC CAPACITOR "ELRA" | 8 | |
| 31 | C12 | | | | |
| 32 | C13 | 100n | CAPACITOR Z5U RM5 | 2 | |
| 33 | C14 | | | | |
| | | | | | |
| 34 | X1 | HC49/U | CRYSTAL 20MHz | 1 | |
| | | | | | |
| 35 | J1 | PSL20 | CONECTOR | 1 | |
| | | | | | |
| 36 | SV1 | ARK500/2 | TERMINAL BOARD | 1 | |
| | | | | | |
| 37 | F1 | T6.3A | FUSE | 1 | |
| | | DP02P | FUSE HOLDER | 1 | |
| | | | | | |
| 38 | V1-V8 | S1G4 | JUMPER | 8 | |
| | | | | | |
| 39 | PCB | DOMIN 2b | PRINTED CIRCUIT BOARD | 1 | |







27,4,1997

**LIST OF MATERIALS FOR PCB1
DOMINATOR II**

Document No.:1

| POS. | ARTICAL | TYPE | DESCRIPTION | Q'TY | SPARE PARTS No. |
|------|---------|---------------|-------------------------------|------|-----------------|
| 1 | IC1 | PIC16C57 HS/P | MICROCONTROLLER | 1 | |
| 2 | IC2 | SN75176 | INTERCHANGE CIRCUIT | 1 | Exxxxxxx |
| 3 | IC3 | LM7805 | INTEGRATED VOLTAGE REGULATOR | 1 | Exxxxxxx |
| 4 | T1 | BC238 | TRANSISTOR | 1 | |
| 5 | D1 | L531D | LED DIODE RED | 1 | |
| 6 | X1 | HC49/U | CRYSTAL 20MHz | 1 | |
| 7 | R1 | 820R | RESISTOR SMA0207 | 1 | |
| 8 | R2 | 1K | RESISTOR SMA0207 | 1 | |
| 9 | R3 | 10K | RESISTOR SMA0207 | 1 | |
| 10 | R4 | 3K3 | RESISTOR SMA0207 | 2 | |
| 11 | R5 | | | | |
| 12 | R-PACK | 8x22K | R-PACK LC9001 | 1 | |
| 13 | C1 | 47µF | ELECTROLYTIC CAPACITOR "ELRA" | 1 | |
| 14 | C2 | 2µ2 | ELECTROLYTIC CAPACITOR "ELRA" | 1 | |
| 15 | C3 | 15p | CAPACITOR SMD | 2 | |
| 16 | C4 | | | | |
| 17 | C5 | 22n | CAPACITOR TK 754 | 1 | |
| 18 | C6 | 100n | CAPACITOR Z5U RM5 | 1 | |
| 19 | C7 | 47µF | ELECTROLYTIC CAPACITOR "ELRA" | 1 | |
| 20 | C8 | 100n | CAPACITOR Z5U RM5 | 1 | |
| 21 | SW1 | DIP8 | SWICTH | 1 | |
| 22 | J1 | PSL20 | CONECTOR | 1 | |
| 23 | J2 | AC3 FDPH | CONECTOR | 1 | |
| 24 | J3 | AC3 MDPH | CONECTOR | 1 | |
| 25 | SV1 | ARK500/2 | TERMINAL BOARD | 1 | |
| 26 | PCB | DOMIN 2a | PRINTED CIRCUIT BOARD | 1 | |

27,4,1997

**LIST OF MATERIALS FOR
DOMINATOR II**

Document No.:2

| POS. | ARTICAL | TYPE | DESCRIPTION | Q'TY | SPARE PARTS No. |
|------|---------|---------------|-------------------------|------|-------------------------------------|
| 31 | J1 | | | | TRANSFER BUS Exxxxxxx |
| 32 | J2 | | | | |
| 33 | J3 | | | | |
| 34 | J4 | PFL20 | CONECTOR | 4 | |
| 35 | | AWG28-20 | WIRE | 0.5m | |
| 36 | | CYA1č | WIRE | 1.2m | |
| 37 | | CYA1sm | WIRE | 0.4m | |
| 38 | | CYA1zž | WIRE | 1m | |
| 39 | | LaU0.35r | WIRE | 0.7m | |
| 40 | | CSA1.5č | WIRE | 2.3m | |
| 41 | | CSA1.5sm | WIRE | 0.6m | |
| 42 | | CSA1zž | WIRE | 1m | |
| 43 | | CSA1r | WIRE | 4.2m | |
| 44 | | CSA0.5r | WIRE | 1.5m | |
| 45 | | Ø1.5 | WIRE | 0.6m | |
| 46 | | 041.0-3x0.5 | INSULATING TUBE | 0.1m | |
| 47 | | 041.0-5x0.5 | INSULATING TUBE | 0.5m | |
| 48 | | 068.0-2.5x0.3 | INSULATING TUBE SILICON | 0.6m | |
| 49 | | 068.0-5x0.5 | INSULATING TUBE SILICON | 2.8m | |
| 50 | | 068.0-5x2 | INSULATING TUBE SILICON | 0.4m | |
| 51 | | 146094 | FLAT CONECTOR | 7 | |
| 52 | | 146097 | FLAT CONECTOR | 3 | |
| 53 | | 146098 | FLAT CONECTOR | 1 | |
| 54 | | 141564 | FLAT CONECTOR | 3 | |
| 55 | | NTN5A | CABLE EYE | 4 | |

27,4,1997

**LIST OF MATERIALS FOR
DOMINATOR II**

Document No.:1

| POS. | ARTICAL | TYPE | DESCRIPTION | Q'TY | SPARE PARTS No. |
|------|---------|--------------|--------------------------------|------|----------------------------------|
| 1 | SW1 | GSW | POWER SECTION | 1 | Exxxxxxx |
| 2 | SW2 | VM05S 04A0 | SWICTH | 1 | Exxxxxxx |
| 3 | F2 | T10A | FUSE | 1 | |
| 4 | F3 | T1.25A | FUSE | 1 | |
| 5 | F4 | 128°C | SELF-RESETTING THERMAL CUT-OUT | 1 | Exxxxxxx |
| 6 | TR1 | 970366 | TRANSFORMER | 1 | Exxxxxxx |
| 7 | TL1 | VAGNINI | BALLAST CHOKE | 2 | Exxxxxxx |
| 8 | TL2 | | | | |
| 9 | ST1 | VAGNINI | STARTER | 1 | Exxxxxxx |
| 10 | DT1 | HMI1200 | METAL HALIDE LAMP | 1 | |
| 11 | C1 | 70µF/250V AC | CAPACITOR | 2 | Exxxxxxx |
| 12 | C2 | | | | |
| 13 | PCB1 | DOMIN 2a | FILL PRINTED CIRCUIT BOARD | 1 | Exxxxxxx |
| 14 | PCB2 | DOMIN 2b | FILL PRINTED CIRCUIT BOARD | 3 | Exxxxxxx |
| 15 | PCB3 | | | | |
| 16 | PCB4 | | | | |
| 17 | Re1 | FINDER 40.61 | RELAY 12V/DC | 1 | FILL PCB5 Exxxxxxx |
| 18 | C3 | 1G | ELECTROLYTIC CAPACITOR "ELRA" | 1 | |
| 19 | D1 | 1N4001 | RECTIFIER DIODE | 1 | |
| 20 | SV1-SV3 | ARK500/2 | THERMAL BOARD | 3 | |
| 21 | PCB | DOMINATOR2 | PRINTED CIRCUIT BOARD | 1 | |
| 22 | V9 | BL04G | TERMINAL STRIP | 1 | FILL PCB6 Exxxxxxx |
| 23 | V10 | S1G4 | JUMPER | 1 | |
| 24 | PCB | | PRINTED CIRCUIT BOARD | 1 | |
| 25 | M1 | TGL36958 | FAN | 1 | Exxxxxxx |
| 26 | M2 | KD1209 | FAN 12V/DC | 1 | Exxxxxxx |
| 27 | M3-M23 | | STEPPING MOTOR | 21 | Exxxxxxx |
| 28 | M24-M29 | B138F.12.21 | D.C. MOTOR | 6 | Exxxxxxx |
| 29 | R1-R6 | 100R | RESISTOR SMA0207 | 6 | Exxxxxxx |
| 30 | V9 | S1G4 | JUMPER | 1 | |

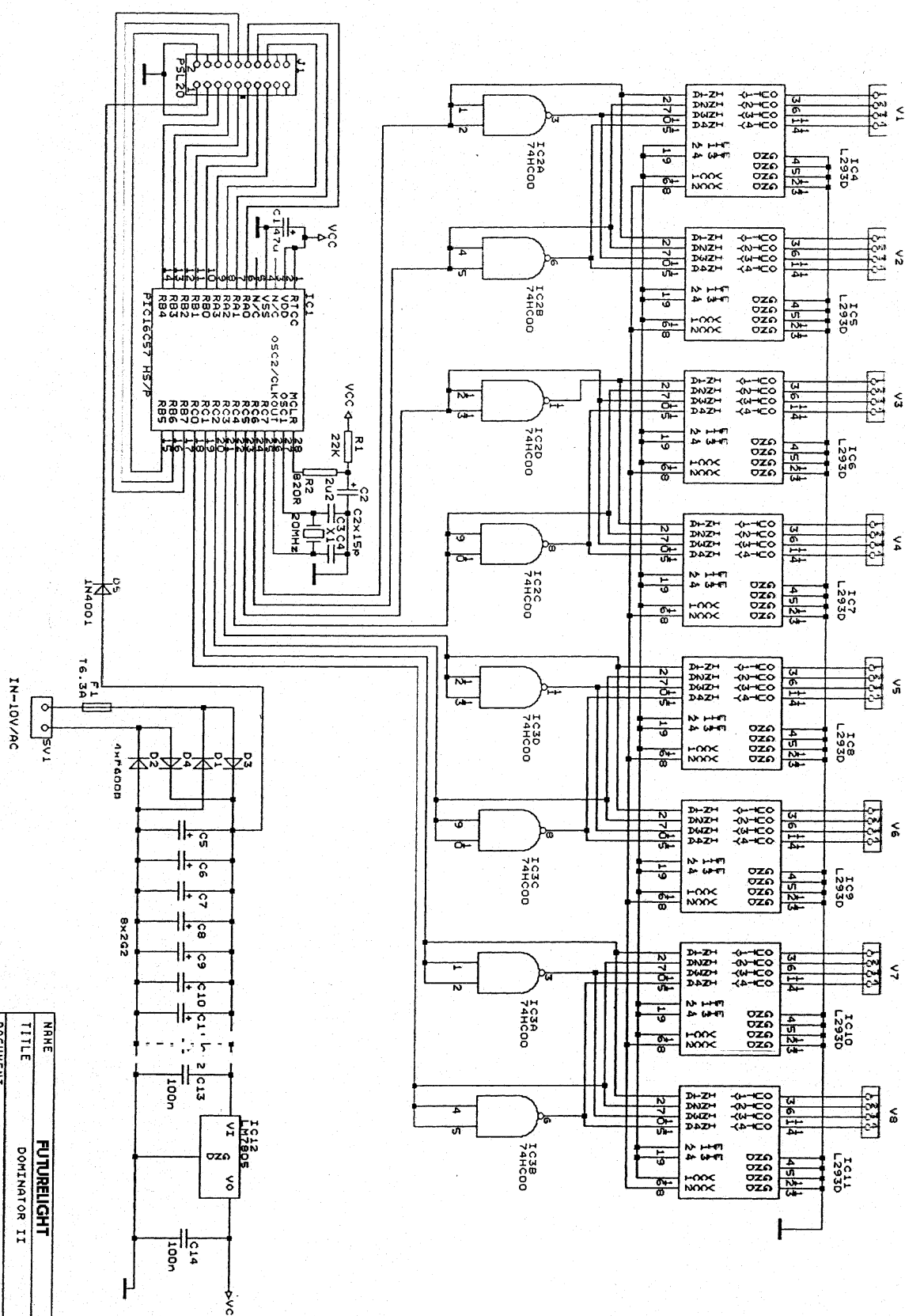


28,4,1997

**LIST OF PROGRAMS FOR
DOMINATOR II**

Document No.:1

| POS. | ARTICAL | TYPE | PROGRAM NAME | Q'TY | SPARE PARTS No. |
|------|-----------------|------------------------------|----------------------------|------|-----------------|
| 1 | IC1 FOR PCB1 | PIC 16C57 MICROCONTROLLER | DOMINATOR II V1.0/IC1-A | 1 | Exxxxxxx |
| 2 | IC1 FOR PCB2 | PIC 16C57 MICROCONTROLLER | DOMINATOR II V1.0/IC1-B | 1 | Exxxxxxx |
| 3 | IC1 FOR PCB3 | PIC 16C57 MICROCONTROLLER | DOMINATOR II V1.0/IC1-C | 1 | Exxxxxxx |
| 4 | IC1 FOR PCB4 | PIC 16C57 MICROCONTROLLER | DOMINATOR II V1.0/IC1-D | 1 | Exxxxxxx |



| | |
|----------|-----------------------------|
| NAME | FUTURELIGHT |
| TITLE | DOMINATOR II |
| DOCUMENT | CIRCUIT DIAGRAM 2 |
| SIZE A4 | DATE 27.4.1997 SHEET 3 OF 3 |

