

NOTES: UNLESS OTHERWISE SPECIFIED:

1. RESISTORS ARE 1/10 W. VALUES IN OHMS
2. CAPACITOR VALUES ARE IN MICROFARADS.
3. COMPONENTS MARKED WITH A \* ARE UNUSED
4. INDUCTORS NOTED ARE NOT PHYSICAL COMPONENTS BUT ARE CREATED USING ETCH ON PCB.

THIS DRAWING IS BASED ON P-CAD DATA ALL CHANGES MUST BE MADE USING THE P-CAD FILES ATTACHED TO MD170134.

OP-AMP BYPASS CAPACITORS

THIRD ANGLE PROJECTION	LEVEL	DRAFTER	DATE
	3	DESIGN RESOURCES	10/22/93
UNLESS OTHERWISE SPECIFIED INTERPRET THIS DRAWING PER ANSI Y14.5M-1982	2	CHECKER	2/1/94
NOTICE	1	ENGINEER	2/1/94
BOSE CORP PROPRIETARY RIGHTS ARE INCLUDED HEREIN. THIS INFORMATION MAY NOT BE COPIED, TRANSFERRED OR DISCLOSED EXCEPT AS AUTHORIZED BY BOSE CORP	1	SAFETY ENGINEER	2/1/94
		REL TO PROD PER NDR 687 AT REV 04	9/26/95

	U1,U2,U5 RC4559	U3,U4,U6 LS404	U7 CA3080	U8 CA3080
+15V	8	4	7	11,14
-15V	4	11	4	4

SAFETY CONTROLLED

FRAMINGHAM, MA 01701-9168

TITLE

PC BOARD,  
901P, AMP/EQ

SIZE

D

FSCM

32108

CLASS

SD

DWG NO.

170130

REV

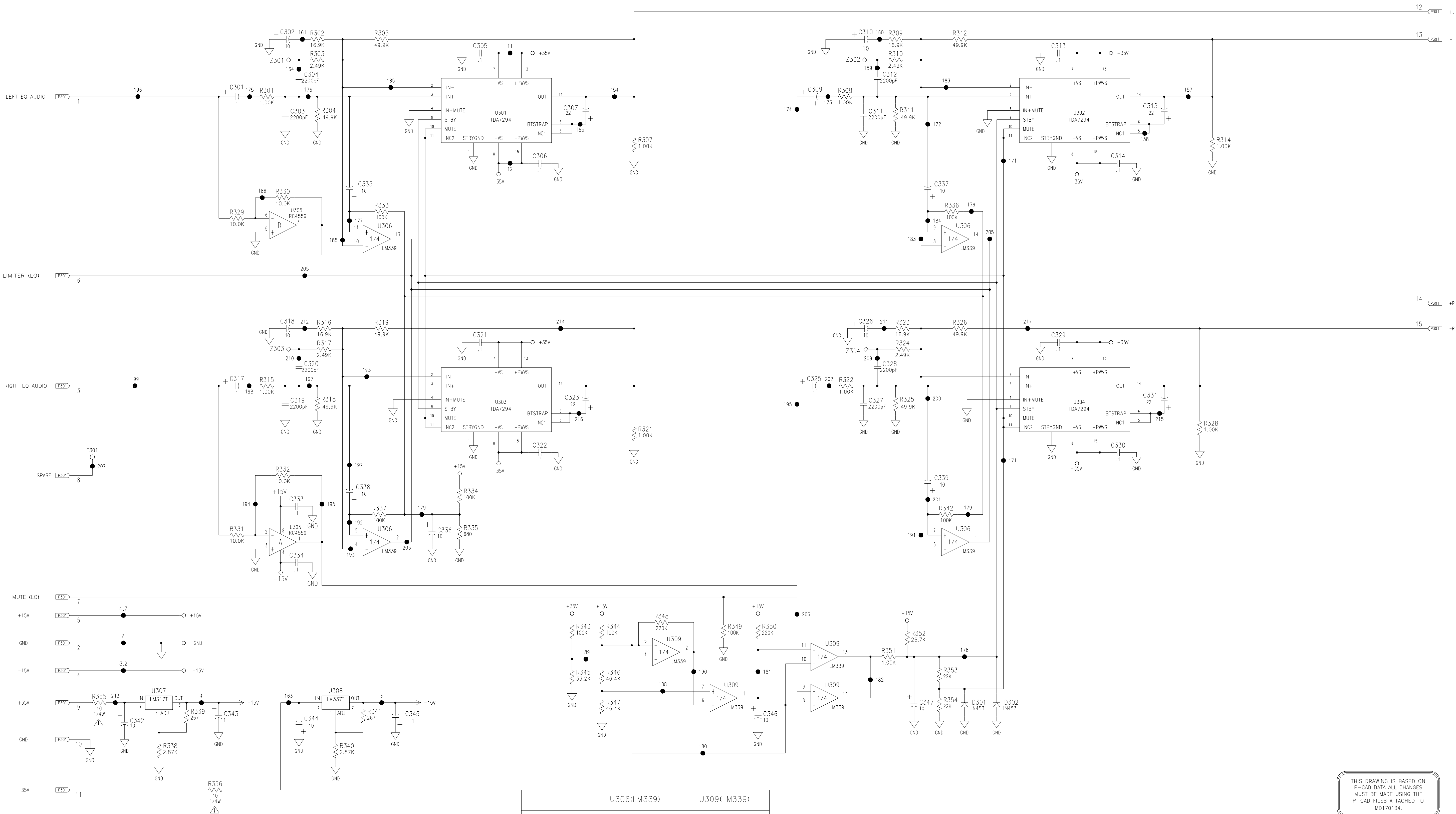
04

SCALE

NA

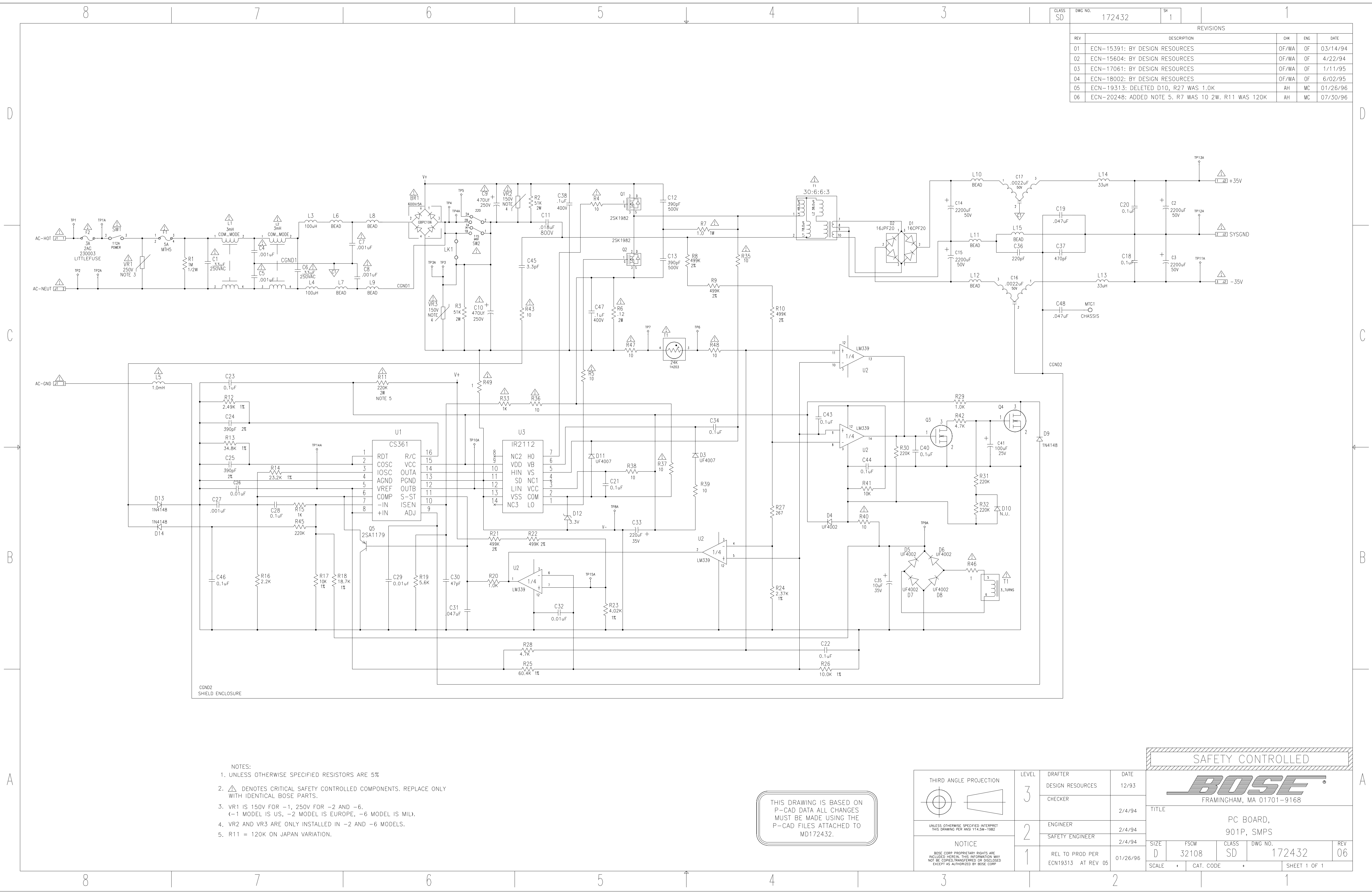
CAT. CODE

SHEET 1 OF 2




NOTES: UNLESS OTHERWISE SPECIFIED:  
1. RESISTORS ARE 1/10 W VALUES IN OHMS  
2. CAPACITOR VALUES ARE IN MICROFARADS.  
⚠ NOTED COMPONENTS ARE SAFETY CONTROLLED  
AND MUST BE REPLACED WITH THE SAME PART ONLY.

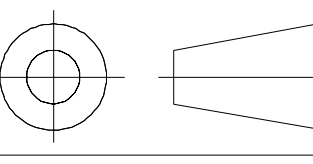
THIS DRAWING IS BASED ON  
P-CAD DATA ALL CHANGES  
MUST BE MADE USING THE  
P-CAD FILES ATTACHED TO  
MD170134.




CLASS	DWG NO.	SR	REVISIONS			
			REV	DESCRIPTION	CHK	DATE
SD	172432	1	01	ECN-15391: BY DESIGN RESOURCES	OF/WA	03/14/94
			02	ECN-15604: BY DESIGN RESOURCES	OF/WA	4/22/94
			03	ECN-17061: BY DESIGN RESOURCES	OF/WA	1/11/95
			04	ECN-18002: BY DESIGN RESOURCES	OF/WA	6/02/95
			05	ECN-19313: DELETED D10, R27 WAS 1.0K	AH	01/26/96
			06	ECN-20248: ADDED NOTE 5. R7 WAS 10 2W. R11 WAS 120K	AH	07/30/96

- NOTES:
1. UNLESS OTHERWISE SPECIFIED RESISTORS ARE 5%
  2.  DENOTES CRITICAL SAFETY CONTROLLED COMPONENTS. REPLACE ONLY WITH IDENTICAL BOSE PARTS.
  3. VR1 IS 150V FOR -1, 250V FOR -2 AND -6.  
(-1 MODEL IS US, -2 MODEL IS EUROPE, -6 MODEL IS MIL.)
  4. VR2 AND VR3 ARE ONLY INSTALLED IN -2 AND -6 MODELS.
  5. R11 = 120K ON JAPAN VARIATION.

THIS DRAWING IS BASED ON  
P-CAD DATA ALL CHANGES  
MUST BE MADE USING THE  
P-CAD FILES ATTACHED TO  
MD172432.

THIRD ANGLE PROJECTION		LEVEL	DRAFTER	DATE
		3	DESIGN RESOURCES	12/93
			CHECKER	2/4/94
UNLESS OTHERWISE SPECIFIED INTERPRET THIS DRAWING PER ANSI Y14.5M-1982		2	ENGINEER	2/4/94
			SAFETY ENGINEER	2/4/94
NOTICE BOSE CORP PROPRIETARY RIGHTS ARE INCLUDED HEREIN. THIS INFORMATION MAY NOT BE COPIED, TRANSFERRED OR DISCLOSED EXCEPT AS AUTHORIZED BY BOSE CORP		1	REL TO PROD PER ECN19313	01/26/96
			AT REV 05	

SAFETY CONTROLLED				
				
FRAMINGHAM, MA 01701-9168				
TITLE PC BOARD, 901P, SMPS				
SIZE D	FSCM 32108	CLASS SD	DWG NO. 172432	REV 06
SCALE * CAT. CODE *			SHEET 1 OF 1	