

# BILL OF MATERIALS REPORT

BOARD NAME: TRANSTUBE PREAMP REPORT DATE: 2APR01

ASSEMBLY LEVEL NUMBER: 99091990/91

PROJECT NUMBER: P9800152

CBDS

PART PART DESCRIPTION AND

\*\* QTY. NAME VALUE NUMBER DEVICE DESIGNATIONS \*\*\*\*\*

\*\*\*\*\*

1 72100710 72100710 ECN00198 PCB

2 .001 .001 70340000 .001MF----10%----50VDC----MON----T&R

C20, C27

1 .0015M .0015M 70330120 .0015M 5% 50vdc my T&A

C23

1 .0033 .0033 70340006 .0033MF---10%----50VDC---T/C---T&R

C1

1 .0039M .0039M 70330153 .0039MF-5%-50VDC-MY-T&A

C4

1 .0068 .0068 70340008 .0068MF---10%----50VDC---MON---T&R

C33

1 .0068M .0068M 70330117 .0068mf---5%---50vdc---my---t&a

C10

1 .01 .01 70340011 .01MF-----10%----50VDC---T/C---T&R

C67

1 .012 .012 70340009 .012MF---10%----50VDC---T/C---T&R

C16

2 .015 .015 70340010 .015MF---10%----50VDC---T/C---T&R

C32, C50

4 .022 .022 70340012 .022MF---10%----50VDC---MON---T&R

C12, C15, C36, C44

4 .047 .047 70340017 .047MF---10%----50VDC---MON---T&R

C19, C24, C25, C55

2 .047M .047M 70330136 .047M 5% 50vdc my T&A

C5, C8

7 .1 .1 70340100 .1MF----+80-20%--50VDC---AXL---T&R

C2, C18, C22, C60, C61, C62, C63

5 .1P10 .1P10 70340101 .1MF-----10%----50VDC---MON---T&R

C14, C26, C38, C39, C42

2 .1SF .1SF 70330113 0.10 MFD 10% 100V STCK FILM T&A

C7, C17

2 .22SF2 .22SF2 70330114 0.22 MF 5% 100V STCK FILM t&a

C3, C29

1 .47SF63 .47SF63 70330159 .047 MF 63V STACK FILM T&A

C54

1 1.3K 1.3K 70240061 1.3K--1/4W--5%----CF--T&R

R63

7 1.5K 1.5K 70240018 1.5K--1/4W--5%----CF--T&R

R21, R45, R49, R51, R80, R90, R92

1 100 100 70240010 100---1/4W--5%----CF--T&R

R83

8 100K 100K 70240034 100K--1/4W--5%----CF--T&R

R6, R14, R16, R46, R47, R48, R71, R77

1 100KARA 71190906 71190906 100K--15A--12MM--R/A D-SHAFT

VR1

4 100PF 100PF 70340054 100PF-----10%----50VDC----T/C----T&R

C48, C51, C52, C66

1 105KP1 105KP1 70241076 105K-1/4W--1%----MF--T&R

R5

4 10K 10K 70240025 10K---1/4W--5%----CF--T&R

R44, R64, R65, R96

1 10KBRA 71190900 71190900 10KB--12MM--R/A D-SHAFT

VR10

1 12K 12K 70240057 12K---1/4W--5%----CF--T&R

R86

1 133KP1 133KP1 70240133 133K 1% 1/4W MF T&R

R1

2 150KP1 150KP1 70241035 150K--1/4W--1%----MF--T&R

R26, R29

10 1740 1740 70401740 2SC1740SLN 40V,.1A, NPN, LOW NOISE T&A

Q1, Q2, Q3, Q4, Q5, Q6, Q7, Q8, Q9, Q10

6 1K 1K 70240017 1K----1/4W--5%----CF--T&R

R52, R56, R68, R73, R87, R88

6 1M 1M 70240039 1M----1/4W--5%----CF--T&R

R22, R23, R36, R39, R40, R59

2 1M5ARA 71190910 71190910 1M--5A--12MM--R/A D-SHAFT  
VR2, VR6

14 1N4148 4148 70464148 1N4148 75V 10MA SILICON DIODE  
CR1, CR2, CR3, CR4, CR6, CR7, CR8, CR9,  
CR10, CR11, CR12, CR13, CR19, CR20

2 2.2K 2.2K 70240020 2.2K--1/4W--5%----CF--T&R  
R53, R58

3 2.2M 2.2M 70240040 2.2M--1/4W--5%----CF--T&R  
R4, R11, R27

2 2.2R50 2.2R50 70320180 2.2MF-----20%----50VDC---EL--T&A  
C49, C65

2 20KBRA 71190903 71190903 20KB--12MM--R/A D-SHAFT  
VR3, VR7

3 22 22 70240007 22----1/4W--5%----CF--T&R  
R75, R78, R95

2 220K 220K 70240036 220K--1/4W--5%----CF--T&R  
R41, R54

1 220R50 220R50 70320187 220MF-----20%----50VDC---EL--T&A  
C59

7 22K 22K 70240029 22K---1/4W--5%----CF--T&R  
R7, R15, R50, R66, R70, R72, R76

12 22R50 22R50 70320181 22MF-----20%----50VDC---EL--T&A  
C9, C13, C31, C35, C37, C41, C43, C53,  
C56, C57, C58, C64

2 243KP1 243KP1 70241037 243---1/4W--1%----MF--T&R  
R13, R32

1 25.5KP1 25.5KP1 70240121 25.5K 1% 1/4W MF T&R  
R9

1 250K5ARA 71190907 71190907 250K--5A--12MM--R/A D-SHAFT  
VR5

2 250KBRA 71190908 71190908 250KB--12MM--R/A D-SHAFT  
VR8, VR9

3 270PF 270PF 70340057 270PF-----10%----50VDC----T/C----T&R  
C6, C11, C21

1 27PF 27PF 70340066 27PF-----10%----50VDC----T/C----T&R  
C45

3 3.3K 3.3K 70240022 3.3K--1/4W--5%----CF--T&R  
R17, R60, R62

1 300KARA 71190912 71190912 300K--25A--CT--12MM--R/A D-SHAFT  
VR4

1 330K 330K 70240037 330K--1/4W--5%----CF--T&R  
R25

1 33K 33K 70240030 33K---1/4W--5%----CF--T&R  
R97

1 37.4KP1 37.4KP1 70240052 37.4K-1/4W--1%----MF--T&R  
R3

1 39K 39K 70240048 39K---1/4W--5%----CF--T&R  
R18

1 4.53KP1 4.53KP1 70240109 4.53K 1% 1/4W MF T&R  
R19

3 4.7K 4.7K 70240023 4.7K--1/4W--5%----CF--T&R  
R8, R79, R89

2 4560 4560 70414560 4560 DUAL OP AMP IC  
U2, U3

3 47 47 70240008 47----1/4W--5%----CF--T&R  
R24, R91, R93

7 470K 470K 70240038 470K--1/4W--5%----CF--T&R  
R10, R37, R38, R43, R55, R61, R94

3 470PF 470PF 70340058 470PF-----10%----50VDC----T/C----T&R  
C28, C30, C68

2 47K 47K 70240031 47K---1/4W--5%----CF--T&R  
R34, R35

2 4P2TLRA 4P2TLRA 71322395 4P2T RA LEVER ACTUATED SLIDE SWITCH  
S1, S3

1 4P3TLRA 4P3TLRA 71322396 4P3T RA LEVER ACTUATED SLIDE SWITCH  
S2

1 4SRHRAU 73717084 73717084 4 PIN RA SQ/P F/LK HD .100  
P7

2 6.8K 6.8K 70240024 6.8K--1/4W--5%----CF--T&R  
R81, R82

1 68 68 70240009 68----1/4W--5%----CF--T&R

R74

1 680 680 70240016 680---1/4W--5%---CF--T&R

R57

1 680K 680K 70240065 680K---1/4W--5%---CF--T&R

R2

4 68K 68K 70240032 68K---1/4W--5%---CF--T&R

R12, R20, R33, R69

1 68KP1 68KP1 70241070 68K---1/4W--1%---MF--T&R

R28

1 820PF 820PF 70340062 820PF-----10%---50VDC---T/C---T&R

C34

1 82K 82K 70240033 82K---1/4W--5%---CF--T&R

R30

1 933 933 70400933 2SA933ASLN 40V, .1A, PNP, LOW NOISE T&A

Q11

1 CAB0018 70600018 70600018 8C .156 - 5" JMPR W/FEED-TO CONN.

P6

1 DG211 DG211 70420211 DG211 CJ I.C.

U1

3 J174 J174 70460174 J-174 30V TO-92 P-CHAN FET T&A

Q12, Q13, Q14

1 MAC97 MAC97 70460097 MAC97-6 400V .6A TO-92 TRIAC T&A

CR5

1 RALEDRSL RALEDRSL 70450053 LED, T-1, RED, W/STOPPER LEAD T&A

CR18

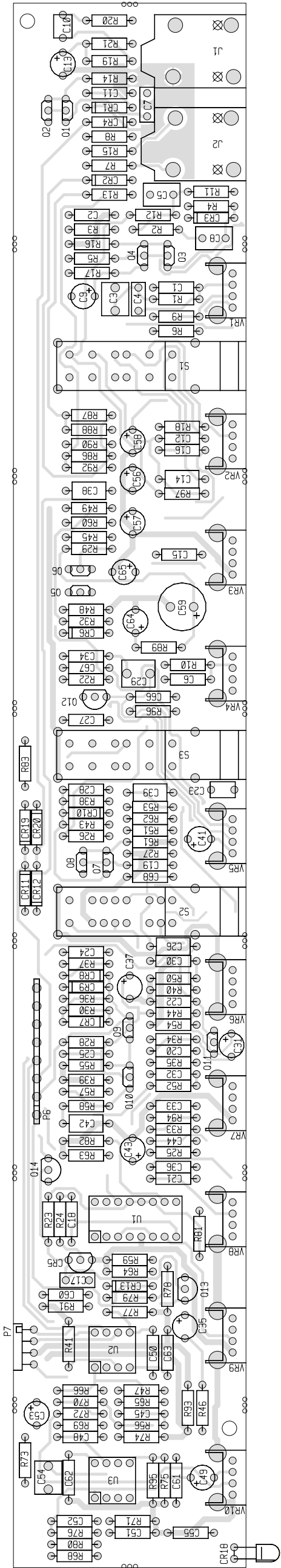
2 RAMN6322 71466322 71466322 JACK MONO R/A 1/4" 6.5MM NINS

J1, J2

\*\*\*\*\*

\* END OF BILL OF MATERIALS REPORT \*

\*\*\*\*\*



# Transtube Preamp

## Notes

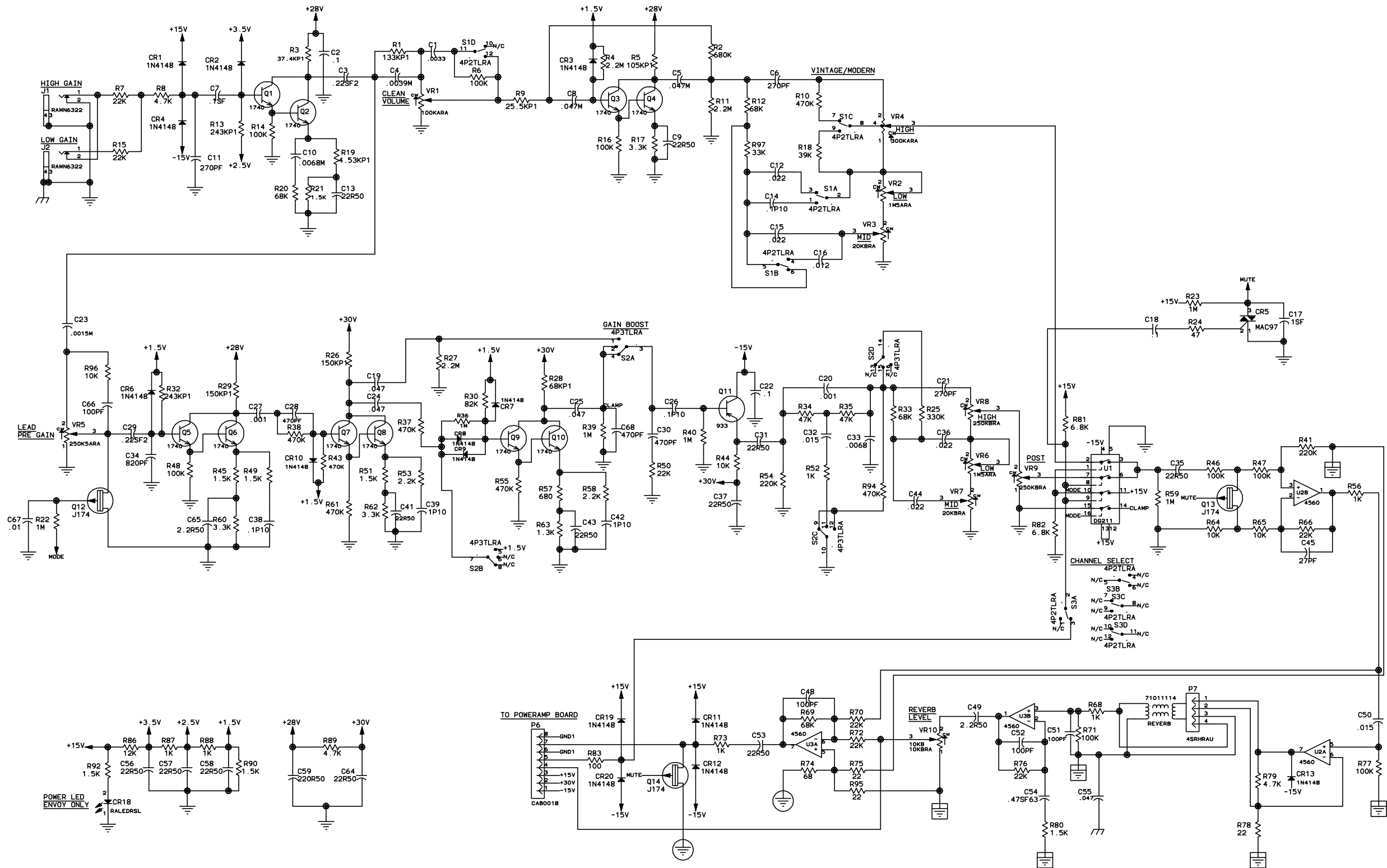
Do NOT insert CR18 & R92 for: Bandit II/Studio Pro II

Use Ribbon-Cable P/N 70600018 for:

BanditII/StudioII

Use Ribbon-Cable P/N 70600097 for:

EnvoyII



NOTICE: THIS CIRCUITRY IS  
PROTECTED BY U.S. PATENT NOS.  
5,197,102; 5,524,055; 5,647,004; 5,619,578; 5,675,656  
TAIWAN R.O.C. UTILITY MODEL 140933; INV. PAT. NOS. 072727  
& 075772; EPO 0662752; SINGAPORE P34967/24137; 42304  
GERMANY NO. 69010380.6; CANADIAN 2,139,714; 2,139,717;  
2,151,003; CHINA ZL95101252.5; ZL95101119;  
KOREA 155022, 155023, & 166649; JP 5,614,988; 2891326;  
2801871; MEXICAN 190,227 & PAT. PENDING  
(PATENTS PENDING) OWNED BY PEAVEY ELECTRONICS CORP. USE  
OR COPYING WITHOUT EXPRESS WRITTEN AUTHORITY FROM PEAVEY  
IS STRICTLY FORBIDDEN AND VIOLATORS WILL BE PROSECUTED  
TO THE FULLEST EXTENT ALLOWED UNDER U.S. PATENT LAWS.

"COMPANY PROPRIETARY INFORMATION"				
PEAVEY ELECTRONICS CORP. 711 A STREET Meridian, Mississippi 39301				
TITLE	TRANSTUBE PRE-AMPLIFIER			
SIZE	CODE	NUMBER	P9800152	REV
D		72100571/99091990		A
DATE	28-OCT-99	SHEET 1 OF 1		