



POWERED SUBWOOFER

SERVICE MANUAL

CONTENTS

SPECIFICATIONS	2-5
PARTS LIST:	
PRE AMPLIFIER BOARD	6-7
POWER AMPLIFIER BOARD	7-9
VOLTAGE SELECTOR BOARD	9
PRE AMP AND POWER AMP ASSEMBLY	10
8" SPEAKER ASSEMBLY	11
POWER CORD CABLE ASSEMBLY	11
BLOCK DIAGRAM	12
SCHEMATIC DIAGRAMS	13-14
PCB LAYOUT	15
EXPLODED VIEW DIAGRAMS	16-18



POWERED SUBWOOFER

SPECIFICATIONS

GENERAL SPECIFICATIONS

	<u>Typical</u>	<u>LIMIT</u>	<u>UNIT</u>
1) CONTINUOUS POWER (@ 85Hz, 0.17% THD)	85	80	W
2) THD (@85Hz 75W)	0.08	0.15	%
3) CLIPPING POWER (Output 1% THD)	90	85	W
4) INPUT SENSITIVITY @ 85W 4 ohm 85Hz LINE . INPUT VOL . Max SPK . INPUT VOL . Max	95 1.7	+/-10% +/-10%	mV V
5) S/N @ 8W 85Hz @ 80W 85Hz (A-WEIGHT, LINE INPUT)	85 95	80 88	dB dB
6) LOW PASS FILTER @ 85Hz Freq VOL Set to Max. Low -3dB Freq VOL Set to Max. Upper -3dB	60 130	+/-10% +/-10%	Hz Hz
7) LOW PASS FILTER @ 65Hz Freq VOL Set to Min. Low -3dB Freq VOL Set to Min. Upper -3dB	50 85	+/-10% +/-10%	Hz Hz
8) LOW PASS FILTER ROLL-OFF Freq VOL Set to Max.	18	+/-2	dB
9) LOW PASS FILTER ROLL-OFF Freq VOL Set to Min.	18	+/-2	dB
10) LINE OUTPUT @1V INPUT HI PASS FILTER -3dB (LINE IN @ 1KHz) Freq VOL Set to Max. Freq VOL Set to Min.	165 65	+/-10% +/-10%	Hz Hz
11) LINE OUTPUT @1V INPUT HI PASS FILTER ROLL-OFF LINE IN @ 1KHz (0 dB O/P Ref) Freq VOL Set to Max. Freq VOL Set to Min.	12 21	+/-2 +/-2	dB dB



POWERED SUBWOOFER

SPECIFICATIONS

12) LINE OUTPUT LINE IN @ 1KHz 1V INPUT (0 dB O/P Ref) Freq VOL Set to Max.	1.3	+/-10%	V
13) SPEAKER OUTPUT HI PASS FILTER -3dB (SPEAKER IN @1KHz) @ 4 Ohm Load	130	+/-10%	Hz
14) SPEAKER OUTPUT HI PASS FILTER ROLL-OFF SPEAKER IN @ 1KHz (0dB 1W O/P Ref) @ 4 Ohm Load	7	+/-1	dB
15) INPUT IMPEDANCE RCA SPEAKER	20K 200	15K +/-10	OHM OHM
16) AUTO TURN ON LEVEL	2.5	+/-1	mV
17) AUTO OFF DELAY TIME	50	40	Min
18) PHASE ADJUSTABLE @ 55-65Hz 10V O/P 0 Degree Ref: PHASE VOL SET Min to Max	0- 180	0-170	Degree
19) HUM & NOISE (17Hz -17KHz Filter) 10K OHM LOAD @ INPUT LEVEL VOL SET to Max FREQ VOL & PHASE VOL SET to min	3	5	mV
20) Current Consumption UL 115 Vac @ 90W OUTPUT @ IDLE CE 230 Vac @ 90W OUTPUT @ IDLE UK 230 Vac @ 90W OUTPUT @ IDLE	1.5 .05 0.8 .03 0.8 .03	1.6 .07 1.0 .04 1.0 .04	A A A A A A



POWERED SUBWOOFER

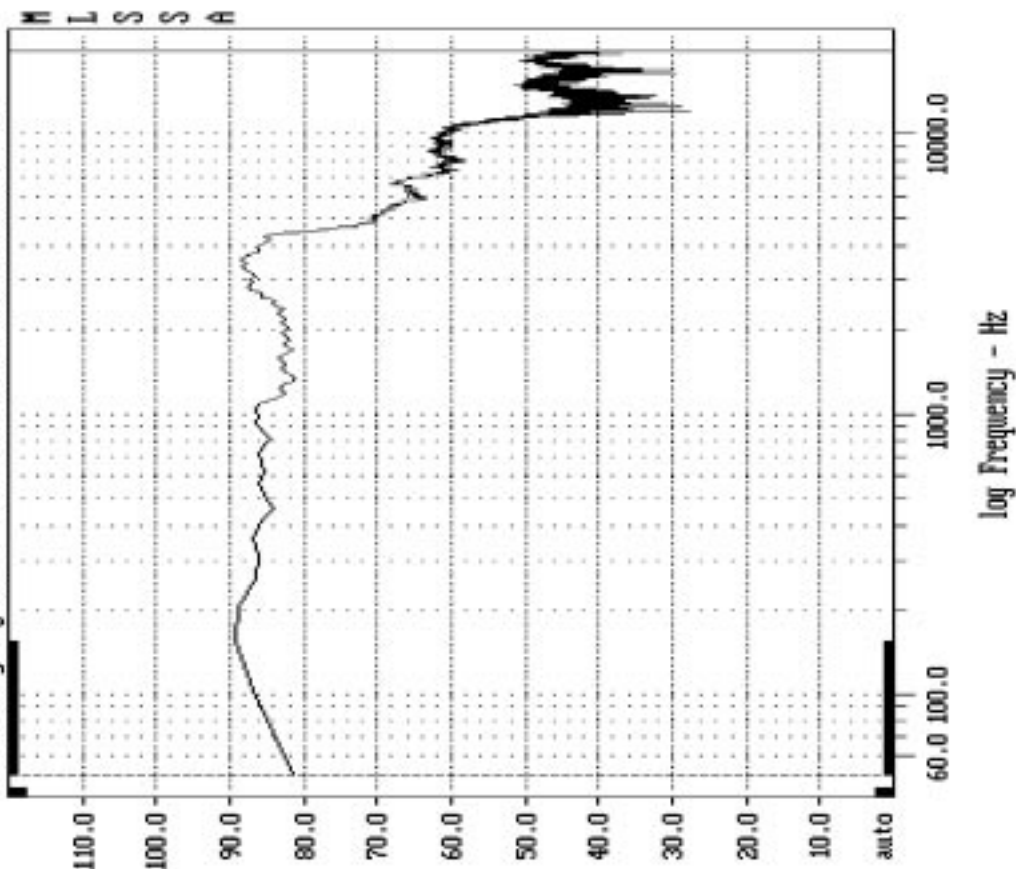
SPECIFICATIONS

WOOFER SPECIFICATIONS

Rated Impedance	4 ohms +/- 0.8 at 1V 200 Hz
Voice coil DCR	3.2 +/-0.16 ohm
Sweep Test	Sine Wave 6V at 20-20K Hz
Resonant Frequency (Fo)	40 +/- 8 Hz
Sensitivity	89 dB/W/m
Rated Power Input	80W
Maximum Power Input	160W
Power Test	40W Music Max/Channel 80W RMS/Channel (The rated power is verified by performing power handling test by feeding rated output with "IEC268-5" for 8 hours)
Main Magnet	Ø90 x Ø45 x 15mm
Bucking Magnet	Ø90 x Ø45 x15mm

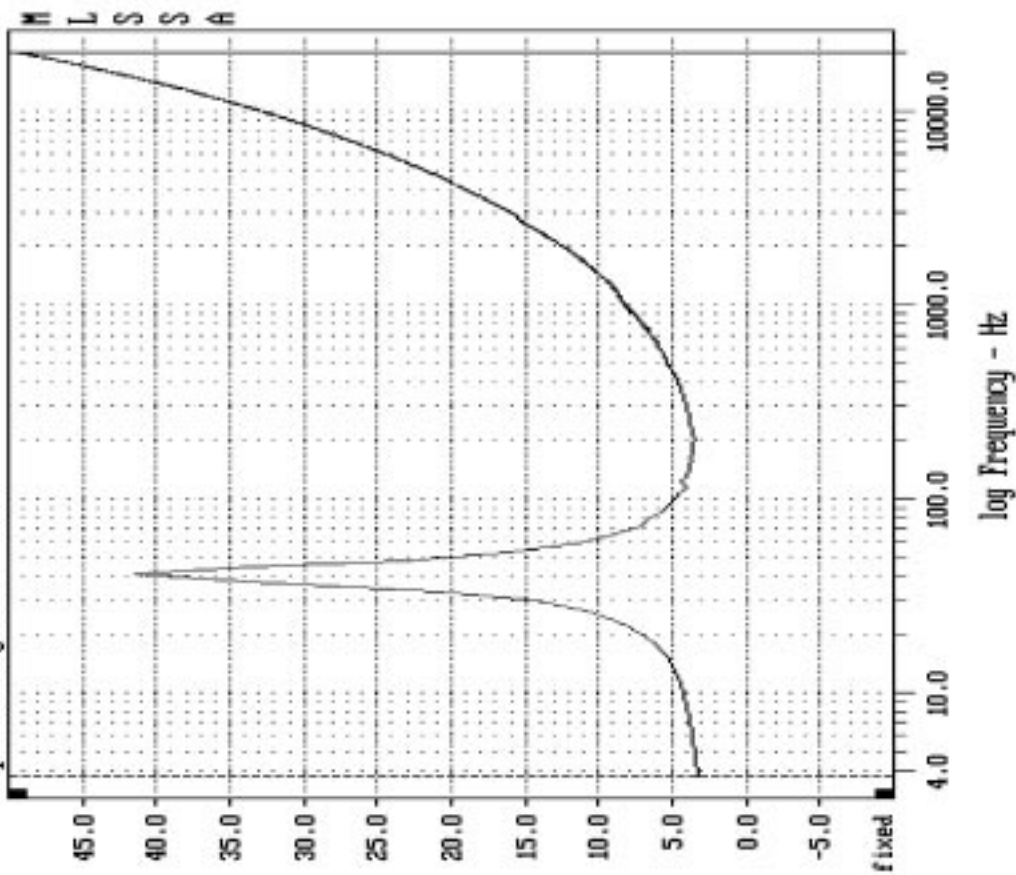
File: D:\JUNNEWPUL\1\NS8.FWQ 1-12-2001 11:28 AM (equalized)

Sensitivity Magnitude - dB SPL/vatt (4 ohms, 00.32 meters)



File: D:\JUNNEWPUL\1\NS8.FWQ 1-12-2001 11:05 AM (equalized)

Impedance Magnitude - ohms



CURSOR: y = 43.981 x = 19736.8426 (304)

CURSOR: y = 49.5796 x = 20001.0356 (5407)

F1 for Help
FREQUENCY DOMAIN MENU: Go View Reference Acquisition Setup Transfer Macro QC
Overlay Calculate Printer DOS Units Library Info Exit

FREQUENCY DOMAIN MENU: Go View Reference Acquisition Setup Transfer Macro QC
Overlay Calculate Printer DOS Units Library Info Exit

F1 for Help

MLSSA: Frequency Domain F1 for Help

MLSSA: Frequency Domain



POWERED SUBWOOFER

PARTS LIST

PRE AMP SECTION PRINTED CIRCUIT BOARD ASSEMBLY

QTY	PART NO	DESCRIPTION	LOCATION
1	150F-101K-5-IEA	CC 50V 100PF 10% RL 5X3	C29
1	150F-104M-N-FD	CC 50V 0.1μF 20% RLF	C27
2	150F-271K-5-IEA	CC 50V 270PF 10% RL 5x3	C3,11
4	150F-334M-N-JJA	CC 50V 0.33μF 20% RLF MO	C4,5,12,13
7	153H-104K-5-QUA	CM 100V 0.1μF 10% RL 9X11 CENTRALAB	C7,15,17,18,19,20,22,
2	153H-333K-5-MRA	CM 100V 0.033μF 10% RL 7X9.5	C16,808
2	153H-683K-5-PSA	CM 100V 0.068μF 10% RL 8.5X10	C62,63
1	157C-477M-5-OU	CE 10V 470μF 20% RL 8X11	C24
2	157D-107M-5-KW	CE 16V 100μF 20% RL 6x12	C21,25
1	157D-476M-5-IU	CE 16V 47μF 20% RL 5x11	C26
2	157E-106M-5-IU	CE 25V 10μF 20% RL 5x11	C23,30
5	157F-225M-5-IU	CE 50V 2.2μF 20% RL 5x11	C1,2,9,10,28
1	2101-9790-0	4RCA JACK HSP-204V-03 GP	RCA1
1	2113-1719-0	8P SPEAKER TERMINAL BOARD PT-801-01	SPK1
1	2600-3005-0800	METAL WASHER M3X0.5X8MM ZNC	D11
8	3131-6140-0	IC BA4560 ROHM	U1,2,3,4,5,6,7,8
1	3700-4536-RG	L-115W EGW/209EGW RED/GR ELE-LED02	LED1
4	4701-102J-2	RCF 1/8W 1K 5% AT	R11,34,71,73
23	4701-103J-2	RCF 1/8W 10K 5% AT	R3, 6, 10, 15, 16, 18, 19, 21, 23, 26, 29, 33, 38, 39, 41, 42, 44, 46, 60, 61, 62, 70, 76, 79
4	4701-123J-2	RCF 1/8W 12K 5% AT	R5,20,28,43
1	4701-125J-C	RCF 1/8W 1.2M 5% ATS	R64
2	4701-153J-2	RCF 1/8W 15K 5% AT	R48,52
1	4701-162J-2	RCF 1/8W 1.6K 5% AT	R56
8	4701-222J-2	RCF 1/8W 2.2K 5% AT	R12,13,35,36,49,53,66,68
1	4701-224J-2	RCF 1/8W 220K 5% AT	R78
1	4701-225J-2	RCF 1/8W 2.2M 5% AT	R65
6	4701-273J-2	RCF 1/8W 27K 5% AT	R17,22,40,45,51,55
4	4701-303J-2	RCF 1/8W 30K 5% AT	R1,24,50,54
2	4701-334J-2	RCF 1/8W 330K 5% AT	R7,30
1	4701-391J-2	RCF 1/8W 390R 5% AT	R57
2	4701-471J-2	RCF 1/8W 470R 5% AT	R63,74
4	4701-472J-2	RCF 1/8W 4.7K 5% AT	R58,59,69,72
1	4701-563J-2	RCF 1/8W 56K 5% AT	R77
2	4701-682J-2	RCF 1/8W 6.8K 5% AT	R14,37
1	4701-683J-2	RCF 1/8W 68K 5% AT	R67
2	4701-912J-2	RCF 1/8W 9.1K 5% AT	R4,27
4	4718-101J-C-X	RMF 1W 100R 5% ATS METAL OXIDE	R8,9,31,32
1	4750-5510-0	VR 20KBX2 VR16G20K15B20K L=15MM	VR1



POWERED SUBWOOFER

PARTS LIST

PRE AMP SECTION PRINTED CIRCUIT BOARD ASSEMBLY CONTINUED

QTY	PART NO	DESCRIPTION	LOCATION
1	4750-5520-0	VR 20KAX1 VR16N20K15A20K L=15MM	VR2
1	4750-5530-0	VR 10KBX1 VR16N20K15B10K L=15MM	VR3
1	4837-3V36-2	DZ 1/2W +-5% 3.3V TEMIC	Z3
2	4837-5V16-2	DZ 1/2W 5.1V "TEMIC" AT	Z1,2
2	4840-8060-2	DIODE 1N4148 NS	D1,2
3	4860-8710-5	TR 9012H	Q3,4,7
4	4860-8720-5	TR 9013H SAMSUNG	Q1,2,5,6
1	5200-3281-0-06	SW COMAX SK-22D01-SG6-T-NS-IK	SW1
1	7010-2221-0	3 PIN SHIELD WIRE ASSY L=130MM	CN1
1	7010-2222-0	3 PIN FLAT CABLE ASSY L=100MM	CN2
2	8910-0042-0	CE 50V 300UF RL 10% NON-POLARITY	C6,14
1	1723-779A-0002	PCB POWER AMP REV:E FC310C	

POWER AMP SECTION PRINTED CIRCUIT BOARD ASSEMBLY

QTY	PART NO	DESCRIPTION	LOCATION
2	150F-101K-5-IEA	CC 50V 100PF 10% RL 5X3	C37,38
2	150F-104M-N-FD	CC 50V 0.1μF 20% RLF	C50,51
1	150F-224M-N-II	CC 50V 0.22μF 20% RLF MONO	C59
1	150F-334M-N-JJA	CC 50V 0.33μF 20% RLF MONO	C36
1	150F-470K-5-IEA	CC 50V 47PF 10% RL 5X3	C35
2	150F-681J-5-OI	CC 50V 680PF 5% RL 8X5	C40,41
2	150H-472M-5-IE	CC 100V 4700PF 20% RL 5X3 TEC	C60,61
1	153H-102K-5-INA	CM 100V 0.001μF 10% RL 5X7.5	C34
1	153H-103K-5-KNA	CM 100V 0.01μF 10% RL 6X7.5	C31
2	153H-104K-5-QUA	CM 100V 0.1μF 10% RL 9X11 CENTRALAB	C54,55
1	153H-224K-5-VYA	CM 100V 0.22μF 10% RL 11.5X13	C45
1	153H-333K-5-MRA	CM 100V 0.033μF 10% RL 7X9.5	C32
2	157D-227M-5-KW	CE 16V 220μF 20% RL 6x12	C52,53
2	157E-106M-5-IU	CE 25V 10μF 20% RL 5x11	C44,48
2	157F-105M-5-IU	CE 50V 1μF 20% RL 5x11	C33,46
2	157F-107M-5-OW	CE 50V 100μF 20% RL 8x12	C42,43
1	157F-225M-5-IU	CE 50V 2.2μF 20% RL 5x11	C39
1	157F-474M-5-IU	CE 50V 0.47μF 20% RL 5X11	C49
2	157Q-476M-5-LUA	CE 35V 47μF 20% RL 6.5X11 ELNA	C47,58



POWERED SUBWOOFER

PARTS LIST

**POWER AMP SECTION
PRINTED CIRCUIT BOARD ASSEMBLY
CONTINUED**

QTY	PART NO	DESCRIPTION	LOCATION
1	1806-2393-0	TT-9904 LE 1012A 1X12TX6MM SPRING COIL	L1
3	2101-1231-0	SPADE TERMINAL 6.3X0.8 STRAIGHT	AC1,AC2,VO
1	2954-3014-3000	B-TITE 3X14MM(BLK.ZN)	D11
1	3130-3020-0	IC LM7915CT REGULATOR	U13
1	3130-3030-0	IC LM7815CT REGLATOR	U12
1	3130-3550-0	IC TA7317P	U11
1	3130-4080-0	IC TL072CP DUAL FET OP AMP TI	U10
1	3131-6140-0	IC BA4560 ROHM	U9
2	4132-1551-0	TERMINAL OUT PUT	SPK+, SPK-
1	4500-8090-0	RELAY RUDH-SH-124D "GOOD SKY"	PLY1
5	4701-101J-2	RCF 1/8W 100R 5% AT	R102,103,106,108,109
1	4701-102J-2	RCF 1/8W 1K 5% AT	R88
5	4701-103J-2	RCF 1/8W 10K 5% AT	R90,91,92,,115,118
4	4701-104J-2	RCF 1/8W 100K 5% AT	R80,81,116,117
3	4701-105J-2	RCF 1/8W 1M 5% AT	R82,83,87
1	4701-123J-2	RCF 1/8W 12K 5% AT	R101
2	4701-153J-2	RCF 1/8W 15K 5% AT	R94,96
1	4701-183J-2	RCF 1/8W 18K 5% AT	R120,123
1	4701-222J-2	RCF 1/8W 2.2K 5% AT	R84
1	4701-272J-2	RCF 1/8W 2.7K 5% AT	R100
1	4701-274J-2	RCF 1/8W 270K 5% AT	R93
2	4701-333J-2	RCF 1/8W 33K 5% AT	R99,121
2	4701-391J-2	RCF 1/8W 390R 5% AT	R97,98
1	4701-392J-2	RCF 1/8W 3.9K 5% AT	R86
1	4701-472J-2	RCF 1/8W 4.7K 5% AT	R129
1	4701-562J-2	RCF 1/8W 5.6K 5% AT	R130
3	4701-563J-2	RCF 1/8W 56K 5% AT	R114,119,122
1	4701-682J-2	RCF 1/8W 6.8K 5% AT	R85
1	4701-822J-2	RCF 1/8W 8.2K 5% AT	R131
1	4707-751J-2	RCF 1/2W 750R 5% AT	R124
4	4718-100J-C-X	RMF 1W 10R 5% ATS METAL OXIDE	R104,105,112,113
2	4719-101J-C-X	RMF 2W 100R 5% ATS METAL	R127,128
2	4719-222J-1-X	RMF 2W 2.2K 5% AL METAL OXIDE	R125,126
2	474B-0R1J-1	RWR 5W 0.1 5% AL	R110,111
1	4756-1036-3-15	SVR B1OK H3 NVZ6TL1 6.3X6.8 HDK	TP1
1	4756-2026-3-05	SVR B2K H3 NVZ6TL1 HDK	TP2
2	4804-0010-2	DIODE 1N4001 AT	D10,12
1	4840-0350-0	DIODE BRIDGE RECT. RS603	D11
6	4840-8060-2	DIODE 1N4148 NS	D3,4,5,6,13,14



POWERED SUBWOOFER

PARTS LIST

POWER AMP SECTION PRINTED CIRCUIT BOARD ASSEMBLY CONTINUED

QTY	PART NO	DESCRIPTION	LOCATION
1	485D-1390-5	TR BD139-10 PHILIPS HHE63-160	Q14
1	4860-1430-5	TR BD140-10 HFE 63-160	Q15
1	4860-8770-0	TR FET J112	Q8
2	4860-8890-0	TR MPS A06 VCE 80V NS	Q12,13
3	4860-8910-0	TR MPS A56 VCE 80V NS	Q9,11,18
1	4860-5050-5	TR 2SC5200 T0-3P (L) TOSHIBA	Q17
1	4860-5060-5	TR 2SA1943 T0-3P (L) TOSHIBA	Q16
1	5400-0711-0	HEAT SINK PLATE (45X34)	D11
2	8910-0028-0	CE 50V 10000µF 20% RL 35X35 K	C56,57
1	8910-0196-0	THERMISTOR NTH4G 10K 1% MURATA	TH1
1	1723-779A-0002	PCB POWER AMP REV:E FC310C	

VOLT SELECTOR SECTION PRINTED CIRCUIT BOARD ASSEMBLY

QTY	PART NO	DESCRIPTION	LOCATION
2	153Z-103M-5-7T	CM 275V 0.01µF 20% RL 18X10.5	C69,70
1	5200-3627-0	SL14-22AH (1A) SW 2P2T AC SELECTOR	SW2
1	1723-780A-0000	PCB VOLT SELECTOR REV:C FC310C	
12	2101-1231-0	SPADE TERMINAL 6.3X0.8 STRAIGHT	1,2,3,4,5,6,L,N,SW2-1, SW2-2, SW2-3,SW2-4



POWERED SUBWOOFER

PARTS LIST

PRE AMP & POWER AMP ASSEMBLY

QTY	PART NO	DESCRIPTION	LOCATION
1	1402-3070-0	X'FORMER MTG. BKT	T1
1	1403-6370-0	REAR PANEL FC310C (CELESTION)	T1
1	1725-327A-0000	INSULATION PCB-3	PANEL
1	1806-2413-0	TT-00017 115V/230V TOROIDAL TRANSFOMER	T1
3	2436-6501-1	VOL/FREQ KNOB	VR FREQ PHAS
6	2600-3005-0800	METAL WASHER M3X0.5X8MM ZNC	PWRM-PCB,Q16,Q17
1	2606-3005-0643	INT TEETH WASHER M3X0.5X6.4MM BZ	PANEL
1	2606-4008-0853	INT TOOTH WASHER M4X0.8X8.5MM BZ	EARTH
12	2607-3009-0550	SPRING WASHER M3X0.9X5.5MM ZNC	IEC1,PWRM-PCB, Q16, Q17,VOLT-PCB
5	2607-4010-0704	SPRING WASHER M4X1X7MM NI	EARTH,T1
2	2640-3022-0540	M3 NUT	IEC1
5	2640-4030-0704	NUT HEX M4	EARTH,T1
2	2842-6213-0	METAL WASHER (M6X1.0X13MM)	T1
8	2904-3006-3000	SCREW M3X6 BINDING (BLK)	PANEL,VOLT-PCB
2	2904-3010-3000	SCREW M3X10 (BLK)	IEC1
5	2904-4010-3000	SCREW M4X10 (BLK)	PANEL,T1
7	2954-3008-3000	T3X8MM SELF TAPPING	H.S,RCA1,SPK
4	2954-3010-3000	B-TITE 3X10MM (BLK.ZN)	H.S
2	2954-3012-3000	3X12MM B-TITE (BLK.ZN)	Q16,Q17
2	3100-3171-0	MICA SHEET A (24X20)	Q16,Q17
4	4135-0271-0	BRASS TUBE 6XM3X12MM	PANEL
1	4153-1250-0	2209 SW COVER 1-41-112	SW1
1	4153-3800-0	POWER INLET SOCKET SC9F-21	IEC1
2	5120-0078-0	FUSE T2.5A 250V 5X20MM UR & SEMKO	F1
1	5200-4725-0	SWITCH ROCKER 2P1T	SW3
1	5400-3311-0	HEAT SINK FC310C	Q16,Q17
5	6360-0011-0	PLASTIC CABLE TIE 97MM	T1/IEC
2	7010-2217-0	250 T'NAL ASSY L=120MM RED	IEC1
2	7010-2218-0	250 T'NAL ASSY L=100MM RED	SW3
2	7010-2219-0	250 T'NAL ASSY L=100MM BROWN	SW3
1	7010-2223-0	RING T'NAL ASSY L=80MM G/Y	EARTH
1	7010-2236-0	250 TNA'L ASSY L=130MM BROWN	IEC1



POWERED SUBWOOFER

PARTS LIST

8" SPEAKER ASSEMBLY

QTY	PART NO	DESCRIPTION	LOCATION
1	8900-5740-0	8"WOOFER F-SUB	

POWER CORD CABLE ASSEMBLY

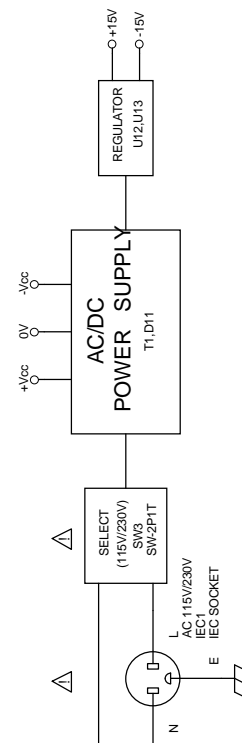
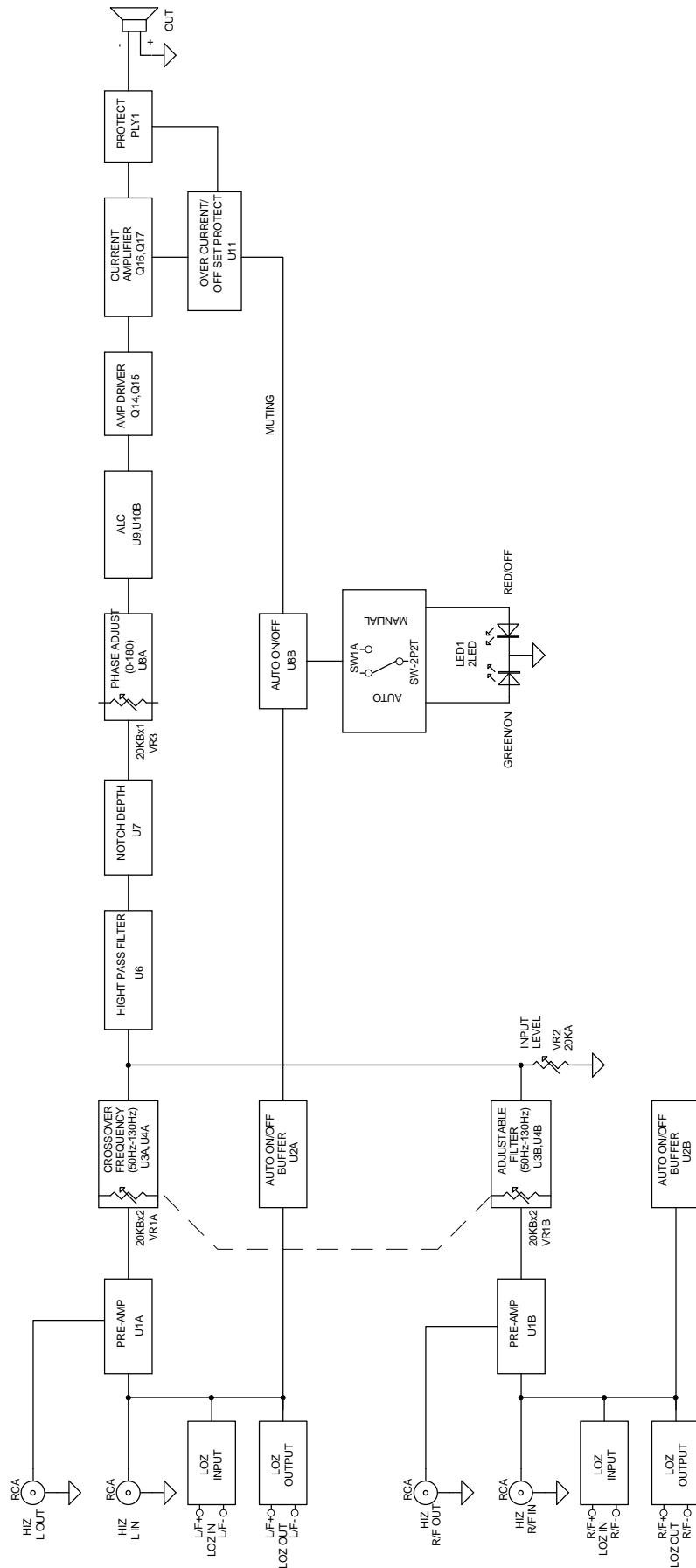
QTY	PART NO	DESCRIPTION	LOCATION
1	7011-6220-0	H05VV-F 0.75MM/3C 2M BLK EU	*EU
1	7011-5030-0	TC1490GP 3CORE CORD 1/P 2M BK 1-51-320	*UK
1	7011-6210-0	SJT #18 /3C 2M BLK POWER CORD 1-51-438	*US

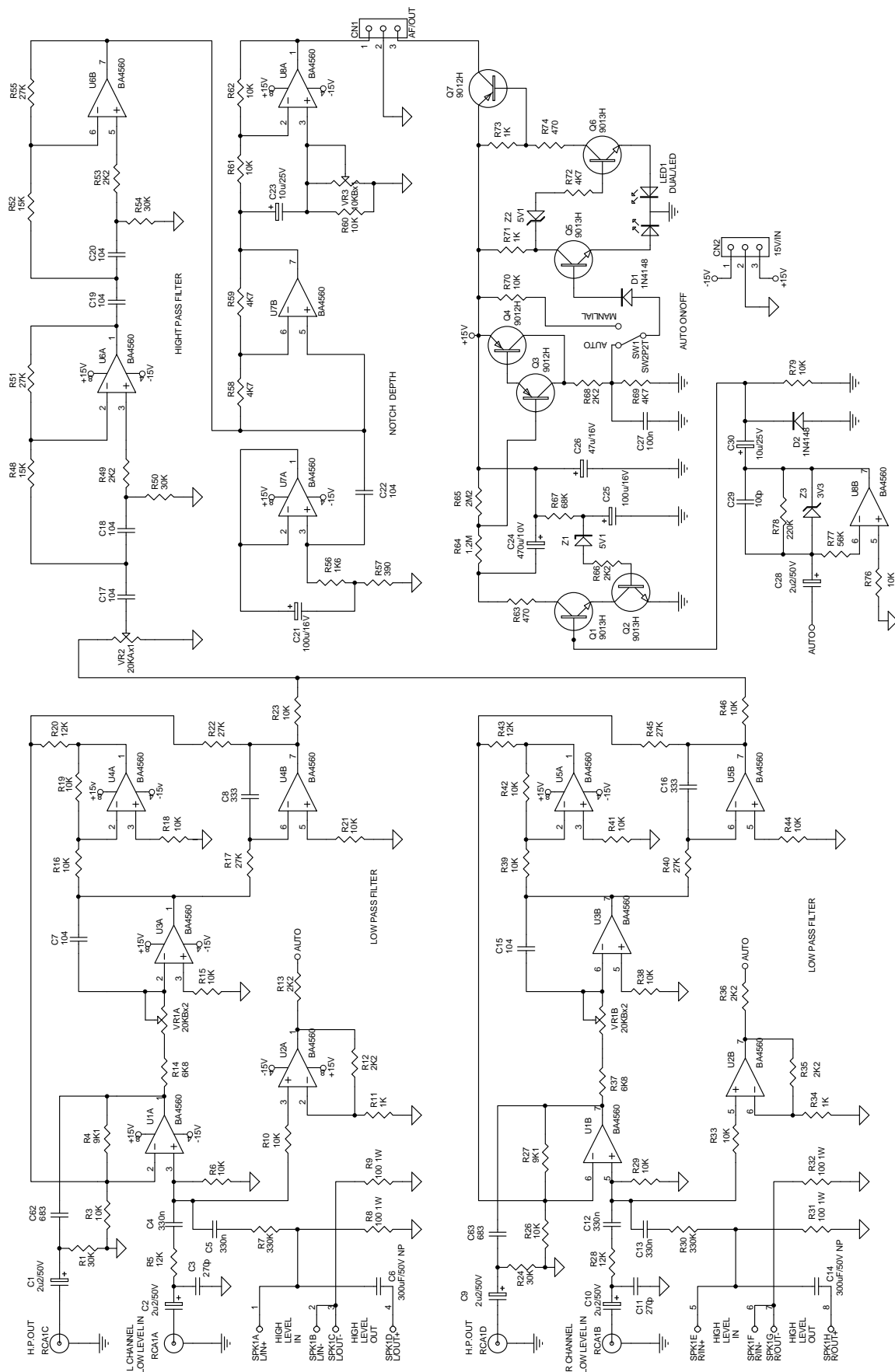
CELESTION

S₈

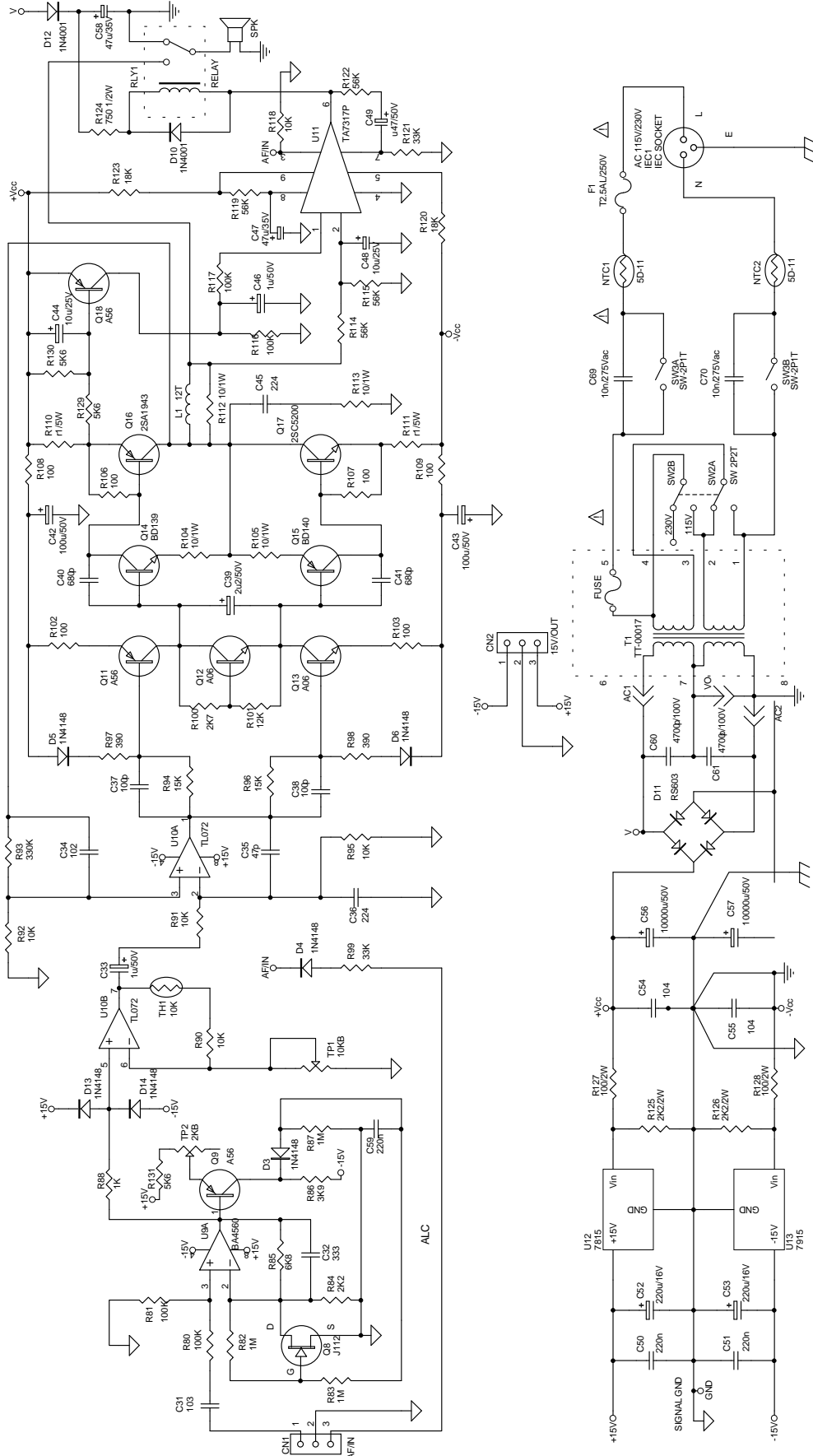
POWERED SUBWOOFER

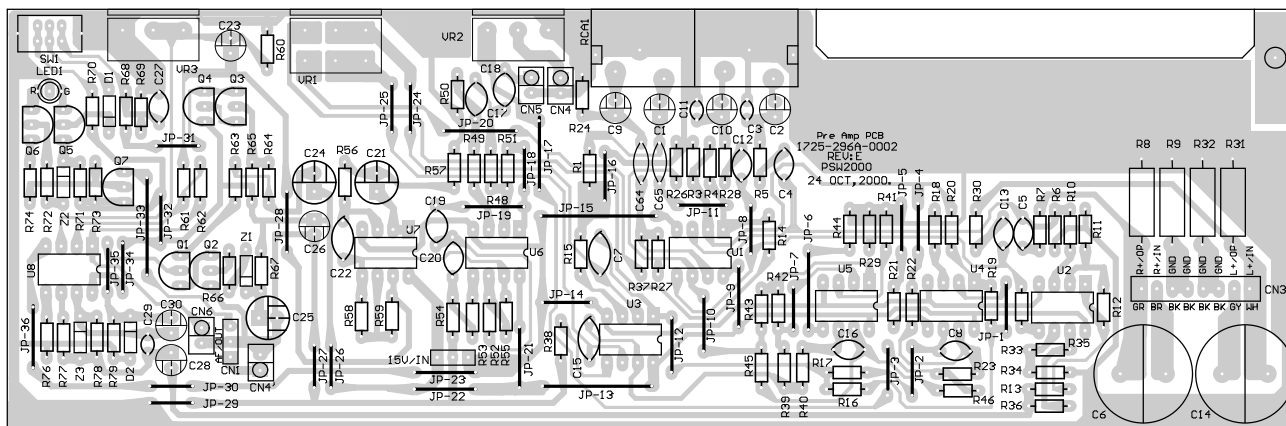
BLOCK DIAGRAM



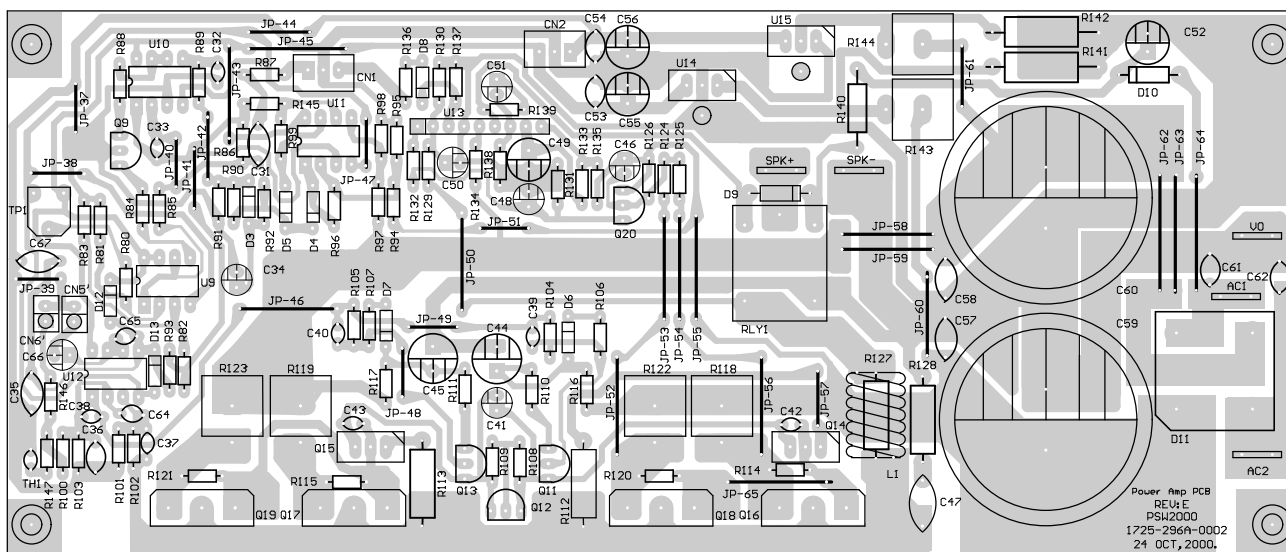


CELESTION S8
Pre Amp Schematic

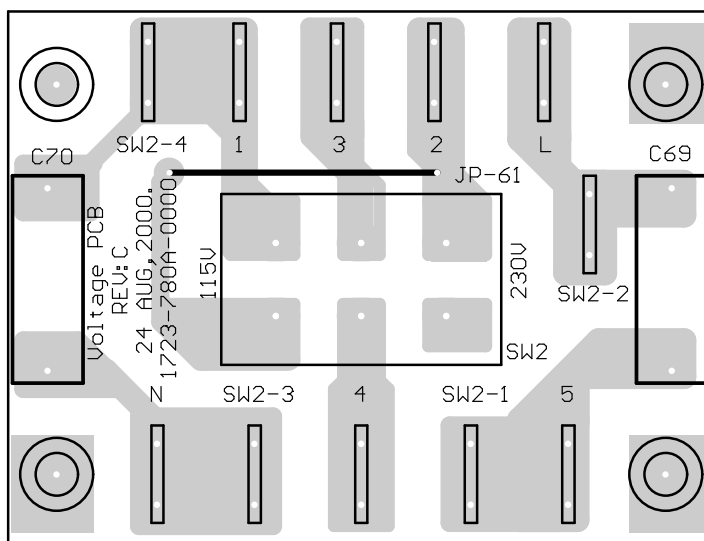




Pre Amplifier PCB Component Side

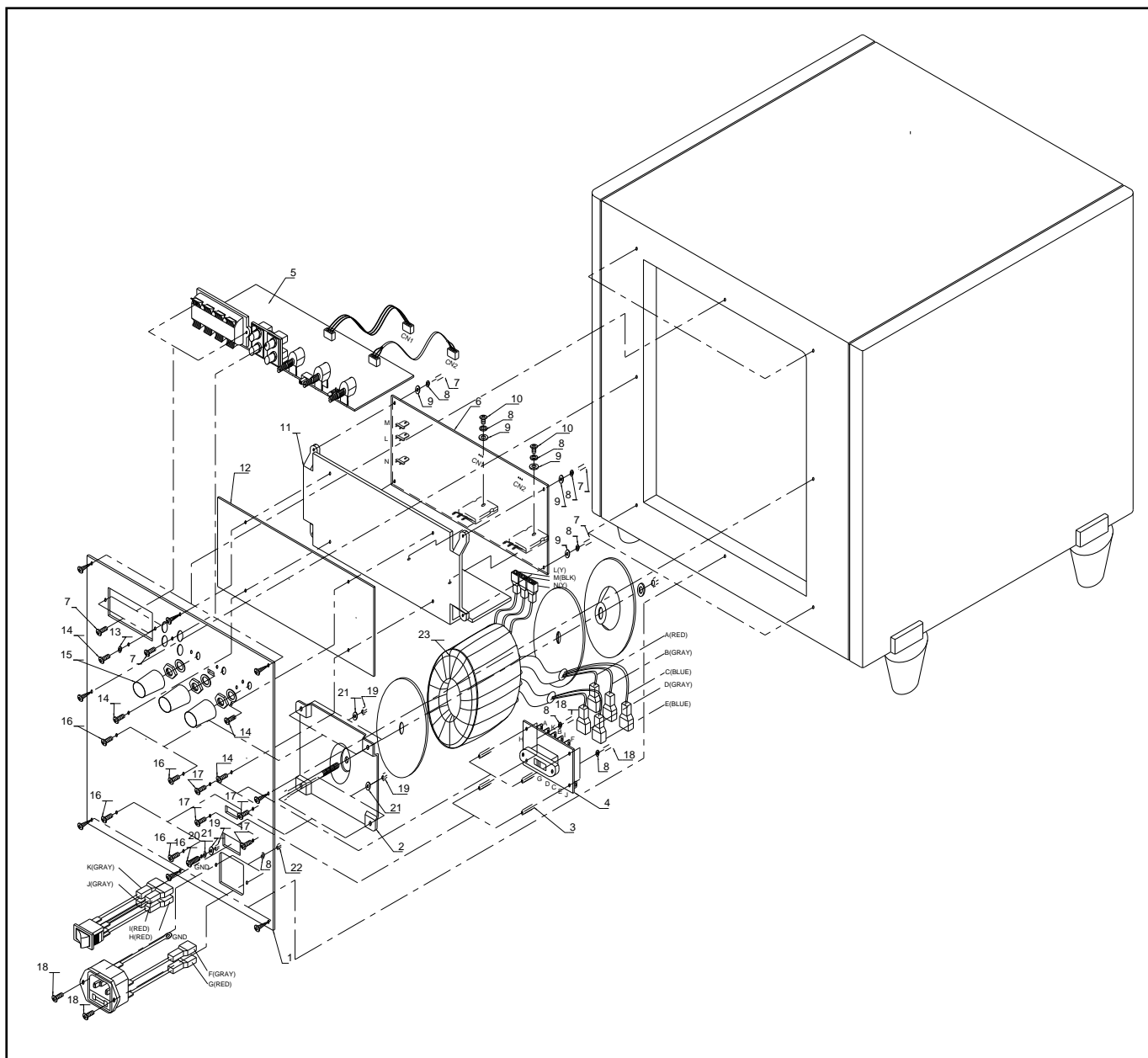


Power Amplifier PCB Component Side



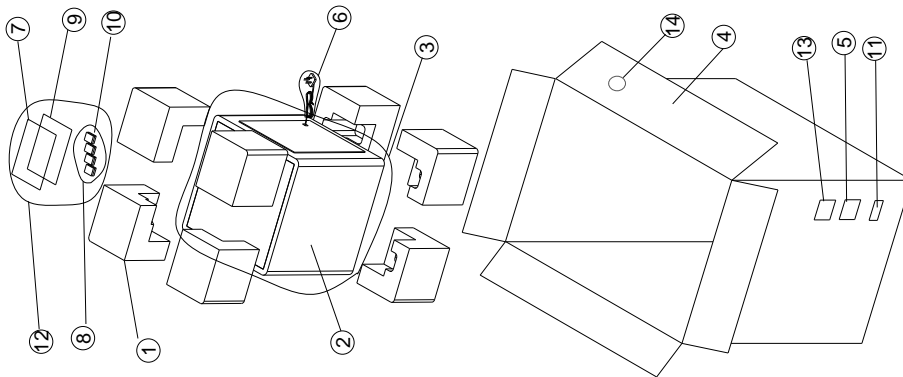
Voltage Selector PCB Component Side

CELESTION S8
PCB Layout



REF	DESCRIPTION	PARTS NO.	QTY
1	REAR PANEL	1403-6370-0	1
2	TRANSFORMER BRACKET	1402-3070-0	1
3	BRASS TUBE 6*M3*12	4135-0271-0	4
4	VOLTAGE PCB	1723-780A-0000	1
5	PRE AMP PCB	1723-779A-0000	1
6	POWER AMP PCB	1723-779A-0000	1
7	T3*8MM SELF TAPPING	2954-3008-3000	7
8	SPRING WASHER M3*0.9*5.5MM	2607-3009-0550	12
9	METAL WASHER M3*0.5*8MM	2600-3005-0800	6
10	M3*12MM B-TITE (BLK.Zn)	2954-3012-3000	2
11	HEATSINK	5400-3311-0	1
12	INSULATION PCB-3	1725-327A-0000	1
13	INT TEETH WASHER M3*0.5*6.4MM	2606-3005-0643	1
14	B-TITE 3*10MM (BLK.Zn)	2954-3010-3000	4
15	VOL/FREQ KNOB	2436-6501-1	3
16	SCREW M4*10 (BLK)	2904-4010-3000	5
17	SCREW M3*6 BINDING (BLK)	2904-3006-3000	8
18	SCREW M3*10 (BLK)	2904-3010-3000	2
19	NUT HEX M4	2640-4030-0704	5
20	INT TOOTH WASHER M4*0.8*8.5MM	2606-4008-0853	1
21	SPRING WASHER M4*1*7MM NI	2607-4010-0704	5
22	M3 NUT	2640-3022-0540	2
23	TRANSFORMER	1806-2413-0	1

CELESTION S8
Exploded View



CELESTION S8
Packing Exploded View

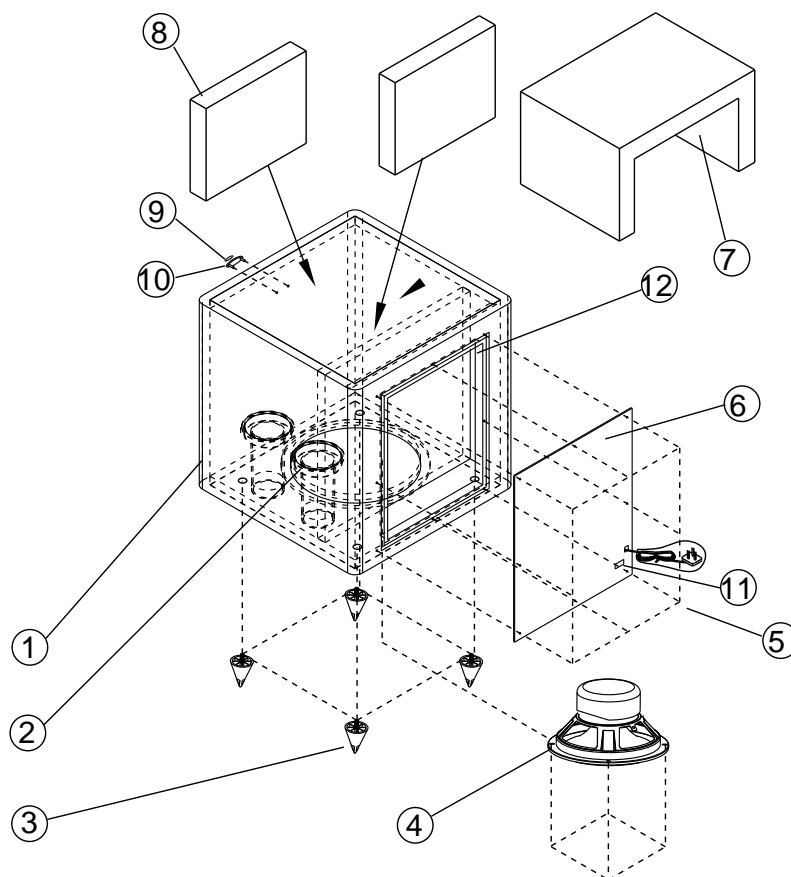
FC310C-EU(S8MKII 230V CHERRY)				FC310C-UK(S8MKII 230V CHERRY)				FC310C-US(S8 110V CHERRY)			
REF	DESCRIPTION	PARTS NO.	QTY	REF	DESCRIPTION	PARTS NO.	QTY	REF	DESCRIPTION	PARTS NO.	QTY
1	P.FOAM FOR PSW1000/S8	1490-7343-0	4	1	P.FOAM FOR PSW1000/S8	1490-7343-0	4	1	P.FOAM FOR PSW1000/S8	1490-7343-0	4
2	CABINET FOR F-SUB CHERRY	1403-4320-0	1	2	CABINET FOR F-SUB CHERRY	1403-4320-0	1	2	CABINET FOR F-SUB CHERRY	1403-4320-0	1
3	P.BAG 400*450*600	1497-4642-0	1	3	P.BAG 400*450*600	1497-4642-0	1	3	P.BAG 400*450*600	1497-4642-0	1
4	M.BOX FOR F-SUB SERIES	145A-6270-0	1	4	M.BOX FOR F-SUB SERIES	145A-6270-0	1	4	M.BOX FOR F-SUB SERIES	145A-6270-0	1
5	UPC LABEL S8 CHERRY-EU	3000-6582-0	1	5	UPC LABEL S8 CHERRY-UK	3000-6584-0	1	5	UPC LABEL S8 CHERRY-US	3000-6583-0	1
6	P.BAG 140*140	1497-4302-0	1	6	P.BAG 140*140	1497-4302-0	1	6	P.BAG 140*140	1497-4302-0	1
7	MANUAL FOR S8 MKII	4301-5163-0	1	7	MANUAL FOR S8 MKII	4301-5163-0	1	7	MANUAL FOR S8 MKII	4301-5163-0	1
8	P.BAG 70*100	1497-4282-0	1	8	P.BAG 70*100	1497-4282-0	1	8	P.BAG 70*100	1497-4282-0	1
9	W.CARD MP-1 NEW VERSION	4301-6027-0	1	9	W.CARD MP-1 NEW VERSION	4301-6027-0	1	9	W.CARD MP-1 NEW VERSION	4301-6027-0	1
10	RUBBER PAD 20X20	4154-0461-0	8	10	RUBBER PAD 20X20	4154-0461-0	8	10	RUBBER PAD 20X20	4154-0461-0	8
11	BARCODE S/N LABEL	3000-6333-0	1	11	BARCODE S/N LABEL	3000-6333-0	1	11	BARCODE S/N LABEL	3000-6333-0	1
12	P.BAG 10*14" W/ES GREEN	1497-4122-0	1	12	P.BAG 10*14" W/ES GREEN	1497-4122-0	1	12	P.BAG 10*14" W/ES GREEN	1497-4122-0	1
13	LABEL FOR S8MKII	3000-6616-0	1	13	LABEL FOR S8MKII	3000-6616-0	1	13	LABEL FOR S8MKII	3000-6616-0	1
14	LABEL FOR S8/PSW1000MKII	3000-6617-0	1	14	LABEL FOR S8/PSW1000MKII	3000-6617-0	1	14	LABEL FOR S8/PSW1000MKII	3000-6617-0	1

FC311C-EU(S8MKII 230V BLACK)				FC311C-UK(S8MKII 230V BLACK)				FC311C-US(S8 110V BLACK)			
REF	DESCRIPTION	PARTS NO.	QTY	REF	DESCRIPTION	PARTS NO.	QTY	REF	DESCRIPTION	PARTS NO.	QTY
1	P.FOAM FOR PSW1000/S8	1490-7343-0	4	1	P.FOAM FOR PSW1000/S8	1490-7343-0	4	1	P.FOAM FOR PSW1000/S8	1490-7343-0	4
2	CABINET FOR F-SUB BLACK	1403-4320-1	1	2	CABINET FOR F-SUB BLACK	1403-4320-1	1	2	CABINET FOR F-SUB BLACK	1403-4320-1	1
3	P.BAG 400*450*600	1497-4642-0	1	3	P.BAG 400*450*600	1497-4642-0	1	3	P.BAG 400*450*600	1497-4642-0	1
4	M.BOX FOR F-SUB SERIES	145A-6270-0	1	4	M.BOX FOR F-SUB SERIES	145A-6270-0	1	4	M.BOX FOR F-SUB SERIES	145A-6270-0	1
5	UPC LABEL S8 BLACK-EU	3000-6585-0	1	5	UPC LABEL S8 BLACK-UK	3000-6587-0	1	5	UPC LABEL S8 BLACK-US	3000-6586-0	1
6	P.BAG 140*140	1497-4302-0	1	6	P.BAG 140*140	1497-4302-0	1	6	P.BAG 140*140	1497-4302-0	1
7	MANUAL FOR S8 MKII	4301-5163-0	1	7	MANUAL FOR S8 MKII	4301-5163-0	1	7	MANUAL FOR S8 MKII	4301-5163-0	1
8	P.BAG 70*100	1497-4282-0	1	8	P.BAG 70*100	1497-4282-0	1	8	P.BAG 70*100	1497-4282-0	1
9	W.CARD MP-1 NEW VERSION	4301-6027-0	1	9	W.CARD MP-1 NEW VERSION	4301-6027-0	1	9	W.CARD MP-1 NEW VERSION	4301-6027-0	1
10	RUBBER PAD 20X20	4154-0461-0	8	10	RUBBER PAD 20X20	4154-0461-0	8	10	RUBBER PAD 20X20	4154-0461-0	8
11	BARCODE S/N LABEL	3000-6333-0	1	11	BARCODE S/N LABEL	3000-6333-0	1	11	BARCODE S/N LABEL	3000-6333-0	1
12	P.BAG 10*14" W/ES GREEN	1497-4122-0	1	12	P.BAG 10*14" W/ES GREEN	1497-4122-0	1	12	P.BAG 10*14" W/ES GREEN	1497-4122-0	1
13	LABEL FOR S8MKII	3000-6616-0	1	13	LABEL FOR S8MKII	3000-6616-0	1	13	LABEL FOR S8MKII	3000-6616-0	1
14	LABEL FOR S8/PSW1000MKII	3000-6617-0	1	14	LABEL FOR S8/PSW1000MKII	3000-6617-0	1	14	LABEL FOR S8/PSW1000MKII	3000-6617-0	1

FC312C-EU(S8MKII 230V GRAY)				FC312C-UK(S8MKII 230V GRAY)				FC312C-US(S8 110V GRAY)			
REF	DESCRIPTION	PARTS NO.	QTY	REF	DESCRIPTION	PARTS NO.	QTY	REF	DESCRIPTION	PARTS NO.	QTY
1	P.FOAM FOR PSW1000/S8	1490-7343-0	4	1	P.FOAM FOR PSW1000/S8	1490-7343-0	4	1	P.FOAM FOR PSW1000/S8	1490-7343-0	4
2	CABINET FOR F-SUB GRAY	1403-4320-2	1	2	CABINET FOR F-SUB GRAY	1403-4320-2	1	2	CABINET FOR F-SUB GRAY	1403-4320-2	1
3	P.BAG 400*450*600	1497-4642-0	1	3	P.BAG 400*450*600	1497-4642-0	1	3	P.BAG 400*450*600	1497-4642-0	1
4	M.BOX FOR F-SUB SERIES	145A-6270-0	1	4	M.BOX FOR F-SUB SERIES	145A-6270-0	1	4	M.BOX FOR F-SUB SERIES	145A-6270-0	1
5	UPC LABEL S8 GRAY-EU	3000-6588-0	1	5	UPC LABEL S8 GRAY-UK	3000-6590-0	1	5	UPC LABEL S8 GRAY-US	3000-6589-0	1
6	P.BAG 140*140	1497-4302-0	1	6	P.BAG 140*140	1497-4302-0	1	6	P.BAG 140*140	1497-4302-0	1
7	MANUAL FOR S8 MKII	4301-5163-0	1	7	MANUAL FOR S8 MKII	4301-5163-0	1	7	MANUAL FOR S8 MKII	4301-5163-0	1
8	P.BAG 70*100	1497-4282-0	1	8	P.BAG 70*100	1497-4282-0	1	8	P.BAG 70*100	1497-4282-0	1
9	W.CARD MP-1 NEW VERSION	4301-6027-0	1	9	W.CARD MP-1 NEW VERSION	4301-6027-0	1	9	W.CARD MP-1 NEW VERSION	4301-6027-0	1
10	RUBBER PAD 20X20	4154-0461-0	8	10	RUBBER PAD 20X20	4154-0461-0	8	10	RUBBER PAD 20X20	4154-0461-0	8
11	BARCODE S/N LABEL	3000-6333-0	1	11	BARCODE S/N LABEL	3000-6333-0	1	11	BARCODE S/N LABEL	3000-6333-0	1
12	P.BAG 10*14" W/ES GREEN	1497-4122-0	1	12	P.BAG 10*14" W/ES GREEN	1497-4122-0	1	12	P.BAG 10*14" W/ES GREEN	1497-4122-0	1
13	LABEL FOR S8MKII	3000-6616-0	1	13	LABEL FOR S8MKII	3000-6616-0	1	13	LABEL FOR S8MKII	3000-6616-0	1
14	LABEL FOR S8/PSW1000MKII	3000-6617-0	1	14	LABEL FOR S8/PSW1000MKII	3000-6617-0	1	14	LABEL FOR S8/PSW1000MKII	3000-6617-0	1

FC310C-US(S8MKII 110V CHERRY)				FC311C-US(S8MKII 110V BLACK)				FC312C-US(S8MKII 110V GRAY)			
REF	DESCRIPTION	PARTS NO.	QTY	REF	DESCRIPTION	PARTS NO.	QTY	REF	DESCRIPTION	PARTS NO.	QTY
1	CABINET FOR S8 CHERRY	1403-4320-0	1	1	CABINET FOR S8 BLACK	1403-4320-1	1	1	CABINET FOR S8 GRAY	1403-4320-2	1
2	PORT TUBE D74*100MM	4153-4591-1	2	2	PORT TUBE D74*100MM	4153-4591-1	2	2	PORT TUBE D74*100MM	4153-4591-1	2
3	PLASTIC FOOT FOR F-SUB	4153-9441-0	4	3	PLASTIC FOOT FOR F-SUB	4153-9441-0	4	3	PLASTIC FOOT FOR F-SUB	4153-9441-0	4
4	8"WOOFER F-SUB	8900-5740-0	1	4	8"WOOFER F-SUB	8900-5740-0	1	4	8"WOOFER F-SUB	8900-5740-0	1
5	SCREW BINDING HEAD M4*16	2913-4016-3000	12	5	SCREW BINDING HEAD M4*16	2913-4016-3000	12	5	SCREW BINDING HEAD M4*16	2913-4016-3000	12
6	AMPLIFIER		1	6	AMPLIFIER		1	6	AMPLIFIER		1
7	ACOUSTIC WOOL 860*320*30	4153-0351-0	1	7	ACOUSTIC WOOL 860*320*30	4153-0351-0	1	7	ACOUSTIC WOOL 860*320*30	4153-0351-0	1
8	ACOUSTIC WOOL 200*600*30	4153-0461-0	1	8	ACOUSTIC WOOL 200*600*30	4153-0461-0	1	8	ACOUSTIC WOOL 200*600*30	4153-0461-0	1
9	N.PLATE 'CELESTION' E-SE	2150-5481-0	1	9	N.PLATE 'CELESTION' E-SE	2150-5481-0	1	9	N.PLATE 'CELESTION' E-SE	2150-5481-0	1
10	N.PLATE CARRIER CELESTIO	2150-5491-0	1	10	N.PLATE CARRIER CELESTIO	2150-5491-0	1	10	N.PLATE CARRIER CELESTIO	2150-5491-0	1
11	BARCODE S/N LABEL SP8387	3000-6333-0	4	11	BARCODE S/N LABEL SP8387	3000-6333-0	4	11	BARCODE S/N LABEL SP8387	3000-6333-0	4
12	EVA GASKET 5*500	4153-3331-0	2	12	EVA GASKET 5*500	4153-3331-0	2	12	EVA GASKET 5*500	4153-3331-0	2

FC310C-EU/UK(S8MKII 230V CHERRY)				FC311C-EU/UK(S8MKII 230V BLACK)				FC312C-EU/UK(S8MKII 230V GRAY)			
REF	DESCRIPTION	PARTS NO.	QTY	REF	DESCRIPTION	PARTS NO.	QTY	REF	DESCRIPTION	PARTS NO.	QTY
1	CABINET FOR S8 CHERRY	1403-4320-0	1	1	CABINET FOR S8 BLACK	1403-4320-1	1	1	CABINET FOR S8 GRAY	1403-4320-2	1
2	PORT TUBE D74*100MM	4153-4591-1	2	2	PORT TUBE D74*100MM	4153-4591-1	2	2	PORT TUBE D74*100MM	4153-4591-1	2
3	PLASTIC FOOT FOR F-SUB	4153-9441-0	4	3	PLASTIC FOOT FOR F-SUB	4153-9441-0	4	3	PLASTIC FOOT FOR F-SUB	4153-9441-0	4
4	8"WOOFER F-SUB	8900-5740-0	1	4	8"WOOFER F-SUB	8900-5740-0	1	4	8"WOOFER F-SUB	8900-5740-0	1
5	SCREW BINDING HEAD M4*16	2913-4016-3000	12	5	SCREW BINDING HEAD M4*16	2913-4016-3000	12	5	SCREW BINDING HEAD M4*16	2913-4016-3000	12
6	AMPLIFIER		1	6	AMPLIFIER		1	6	AMPLIFIER		1
7	ACOUSTIC WOOL 860*320*30	4153-0351-0	1	7	ACOUSTIC WOOL 860*320*30	4153-0351-0	1	7	ACOUSTIC WOOL 860*320*30	4153-0351-0	1
8	ACOUSTIC WOOL 200*600*30	4153-0461-0	1	8	ACOUSTIC WOOL 200*600*30	4153-0461-0	1	8	ACOUSTIC WOOL 200*600*30	4153-0461-0	1
9	N.PLATE 'CELESTION' E-SE	2150-5481-0	1	9	N.PLATE 'CELESTION' E-SE	2150-5481-0	1	9	N.PLATE 'CELESTION' E-SE	2150-5481-0	1
10	N.PLATE CARRIER CELESTIO	2150-5491-0	1	10	N.PLATE CARRIER CELESTIO	2150-5491-0	1	10	N.PLATE CARRIER CELESTIO	2150-5491-0	1
11	BARCODE S/N LABEL SP8387	3000-6333-0	4	11	BARCODE S/N LABEL SP8387	3000-6333-0	4	11	BARCODE S/N LABEL SP8387	3000-6333-0	4
12	EVA GASKET 5*500	4153-3331-0	2	12	EVA GASKET 5*500	4153-3331-0	2	12	EVA GASKET 5*500	4153-3331-0	2



CELESTION S8
Assembly Exploded View