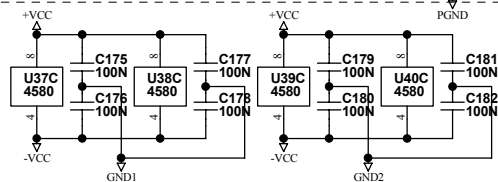
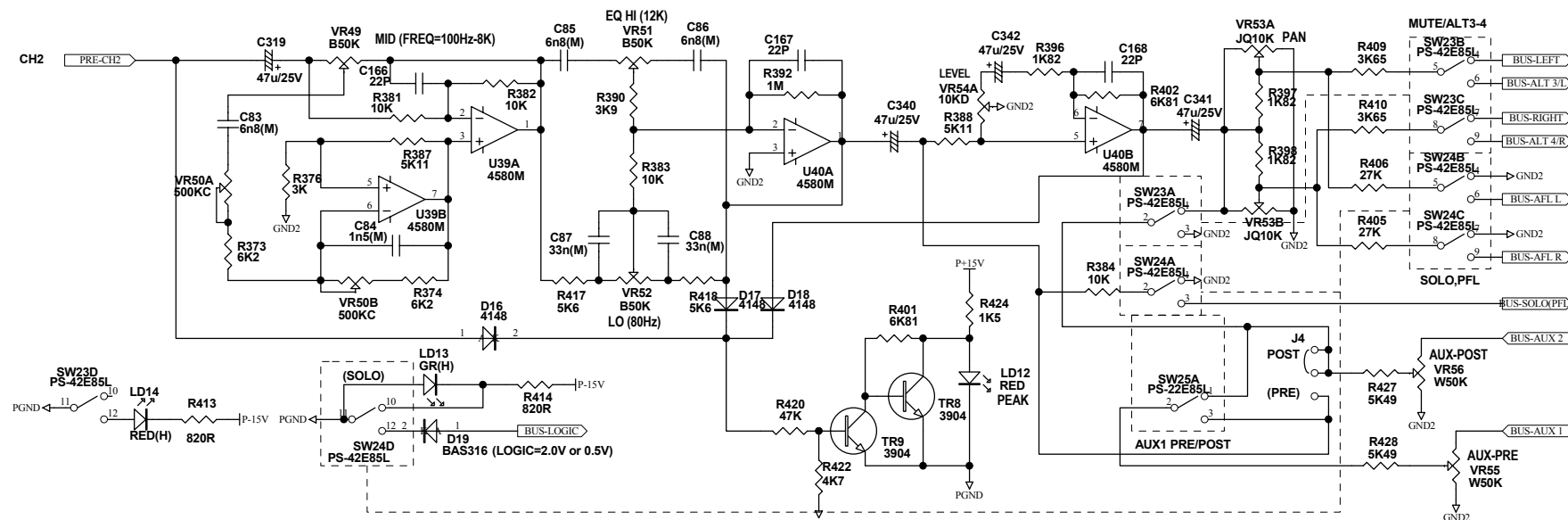
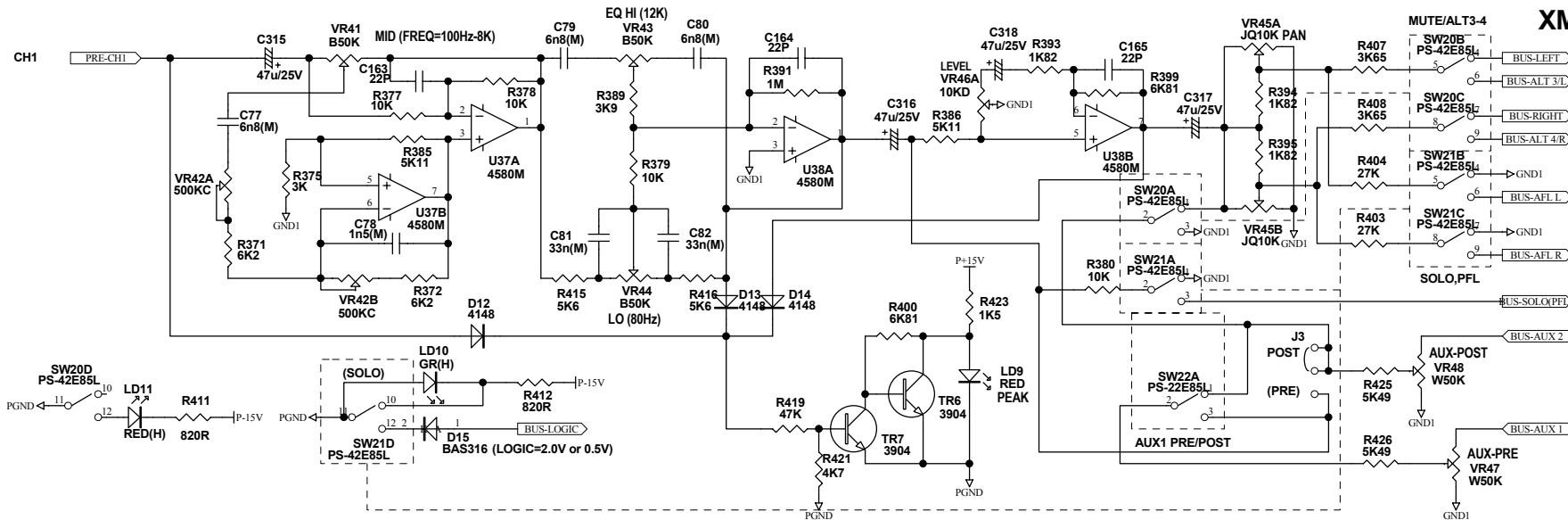


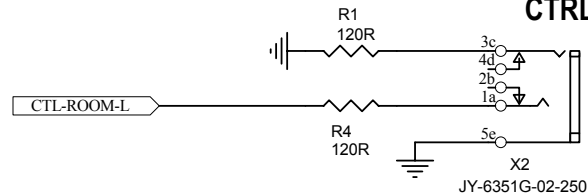
XM16MN1 (2/3)



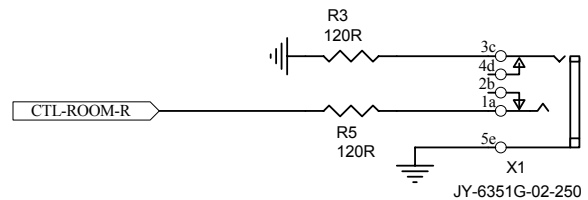
Titel			
XM12MN1			
Size	A3	Model No:	XM-12D
Revision	VER050429		
Date:	16-Aug-2005	Sheet	2 of 8
File:	XM12MN-1.SCH	Drawn By:	T.S.B.

XM-12PU1 (1)

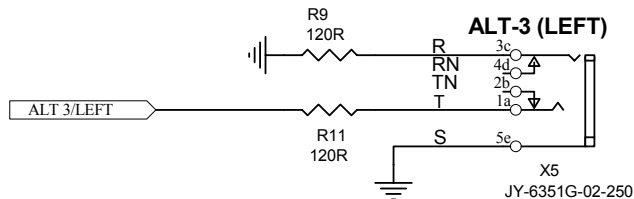
CTRL ROOM OUT



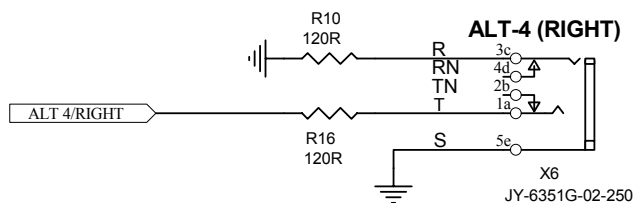
LEFT



RIGHT

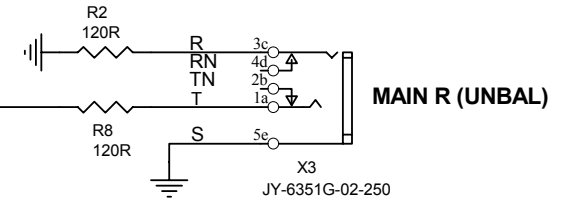
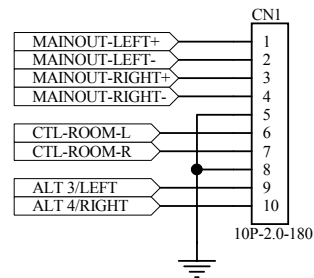


ALT-3 (LEFT)

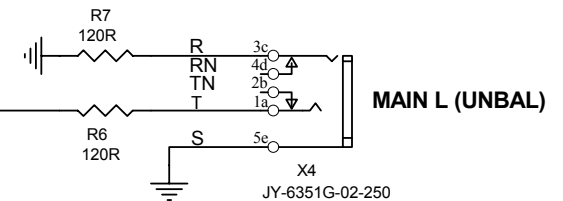


ALT-4 (RIGHT)

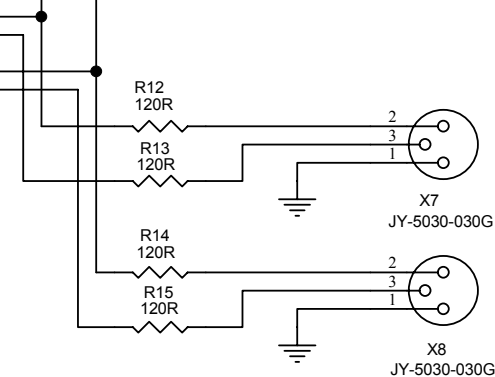
MAINOUT-RIGHT+
MAINOUT-RIGHT-
MAINOUT-LEFT+
MAINOUT-LEFT-



MAIN R (UNBAL)



MAIN L (UNBAL)



MAIN OUT
(BALANCED)
RIGHT

LEFT

Titel			
XM-12PU3			
Size	Model No:	Revision	
A4	XM-12	VER050507	
Date:	16-Aug-2005	Sheet	1 of 1
File:	XM-12PU3.SCH	Drawn By:	TSB.

XM-12PU1 (2/2)

STEREO AUX RETURN1

LEFT 1
(MONO / MASTER)

STEREO AUX RETURN2

LEFT 2
RIGHT 2

PHONES

TAPE IN

TAPE OUT

MAINOUT LEFT

MAINOUT RIGHT

2TK IN L

2TK IN R

2TK IN L

2TK IN R

2TK IN L

2TK IN R

2TK IN L

2TK IN R

2TK IN L

2TK IN R

2TK IN L

2TK IN R

2TK IN L

2TK IN R

2TK IN L

2TK IN R

2TK IN L

2TK IN R

2TK IN L

2TK IN R

2TK IN L

2TK IN R

2TK IN L

2TK IN R

2TK IN L

2TK IN R

2TK IN L

2TK IN R

2TK IN L

2TK IN R

2TK IN L

2TK IN R

2TK IN L

2TK IN R

2TK IN L

2TK IN R

2TK IN L

2TK IN R

2TK IN L

2TK IN R

2TK IN L

2TK IN R

2TK IN L

2TK IN R

2TK IN L

2TK IN R

2TK IN L

2TK IN R

2TK IN L

2TK IN R

2TK IN L

2TK IN R

2TK IN L

2TK IN R

2TK IN L

2TK IN R

2TK IN L

2TK IN R

LINE 5/6

LINE IN 5

LEFT(MONO)

RIGHT

LINE IN 6

LEFT(MONO)

RIGHT

LINE IN 7

LEFT(MONO)

RIGHT

LINE IN 8

LEFT(MONO)

RIGHT

LINE IN 9

LEFT(MONO)

RIGHT

LINE IN 10

LEFT(MONO)

RIGHT

LINE IN 11

LEFT(MONO)

RIGHT

LINE IN 12

LEFT(MONO)

RIGHT

LINE IN 13

LEFT(MONO)

RIGHT

LINE IN 14

LEFT(MONO)

RIGHT

LINE IN 15

LEFT(MONO)

RIGHT

LINE IN 16

LEFT(MONO)

RIGHT

LINE IN 17

LEFT(MONO)

RIGHT

LINE IN 18

LEFT(MONO)

RIGHT

LINE IN 19

LEFT(MONO)

RIGHT

LINE IN 20

LEFT(MONO)

RIGHT

LINE IN 21

LEFT(MONO)

RIGHT

LINE IN 22

LEFT(MONO)

RIGHT

LINE IN 23

LEFT(MONO)

RIGHT

LINE IN 24

LEFT(MONO)

RIGHT

LINE IN 25

LEFT(MONO)

RIGHT

LINE IN 26

LEFT(MONO)

RIGHT

LINE IN 27

LEFT(MONO)

RIGHT

LINE IN 28

LEFT(MONO)

RIGHT

LINE IN 29

LEFT(MONO)

RIGHT

LINE IN 30

LEFT(MONO)

RIGHT

LINE IN 31

LEFT(MONO)

RIGHT

LINE IN 32

LEFT(MONO)

RIGHT

LINE IN 33

LEFT(MONO)

RIGHT

LINE IN 34

LEFT(MONO)

RIGHT

LINE IN 35

LEFT(MONO)

RIGHT

LINE IN 36

LEFT(MONO)

RIGHT

LINE IN 37

LEFT(MONO)

RIGHT

LINE IN 38

LEFT(MONO)

RIGHT

LINE IN 39

LEFT(MONO)

RIGHT

LINE IN 40

LEFT(MONO)

RIGHT

LINE IN 41

LEFT(MONO)

RIGHT

LINE IN 42

LEFT(MONO)

RIGHT

LINE IN 43

LEFT(MONO)

RIGHT

LINE IN 44

LEFT(MONO)

RIGHT

LINE IN 45

LEFT(MONO)

RIGHT

LINE IN 46

LEFT(MONO)

RIGHT

LINE IN 47

LEFT(MONO)

RIGHT

LINE IN 48

LEFT(MONO)

RIGHT

LINE IN 49

LEFT(MONO)

RIGHT

LINE IN 50

LEFT(MONO)

RIGHT

LINE IN 51

LEFT(MONO)

RIGHT

LINE IN 52

LEFT(MONO)

RIGHT

LINE IN 53

LEFT(MONO)

RIGHT

LINE IN 54

LEFT(MONO)

RIGHT

LINE IN 55

LEFT(MONO)

RIGHT

LINE IN 56

LEFT(MONO)

RIGHT

LINE IN 57

LEFT(MONO)

RIGHT

LINE IN 58

LEFT(MONO)

RIGHT

LINE IN 59

LEFT(MONO)

RIGHT

LINE IN 60

LEFT(MONO)

RIGHT

LINE IN 61

LEFT(MONO)

RIGHT

LINE IN 62

LEFT(MONO)

RIGHT

LINE IN 63

LEFT(MONO)

RIGHT

LINE IN 64

LEFT(MONO)

RIGHT

LINE IN 65

LEFT(MONO)

RIGHT

LINE IN 66

LEFT(MONO)

RIGHT

LINE IN 67

LEFT(MONO)

RIGHT

LINE IN 68

LEFT(MONO)

RIGHT

LINE IN 69

LEFT(MONO)

RIGHT

LINE IN 70

LEFT(MONO)

RIGHT

LINE IN 71

LEFT(MONO)

RIGHT

LINE IN 72

LEFT(MONO)

RIGHT

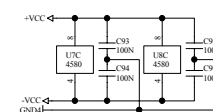
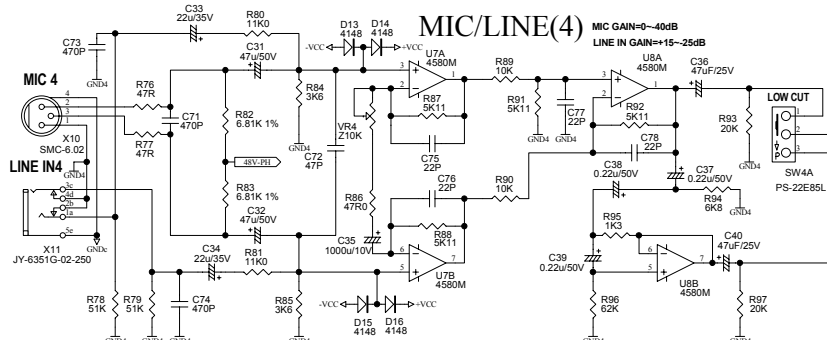
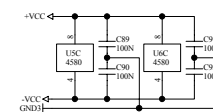
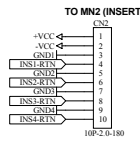
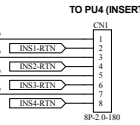
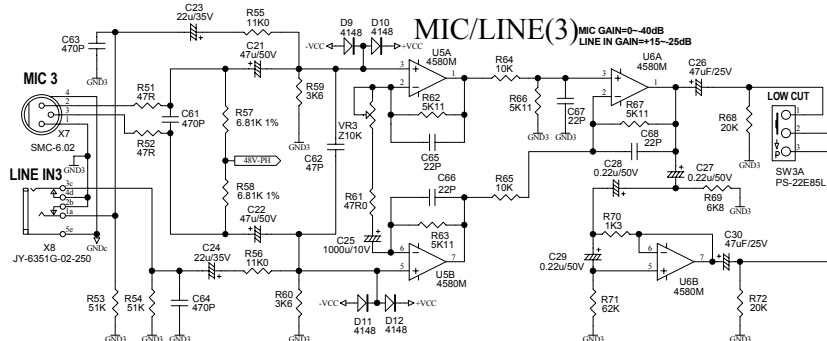
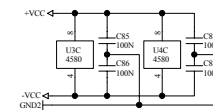
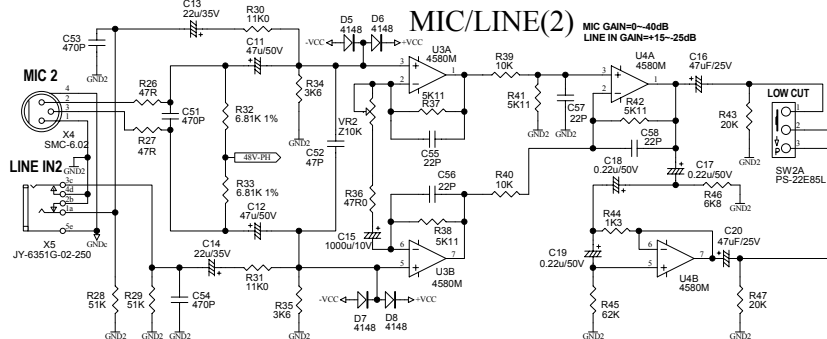
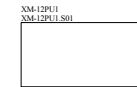
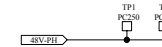
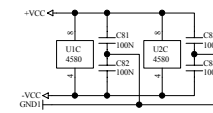
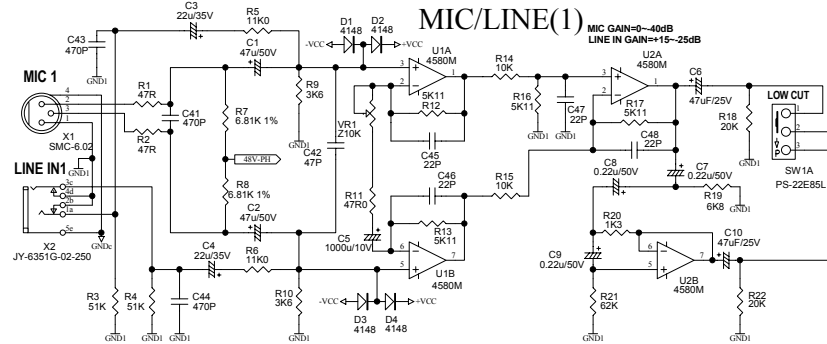
LINE IN 73

LEFT(MONO)

RIGHT

LINE IN 74

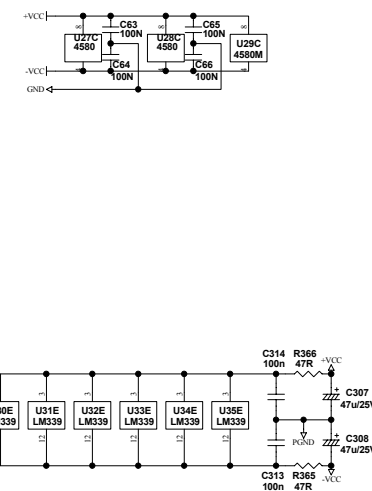
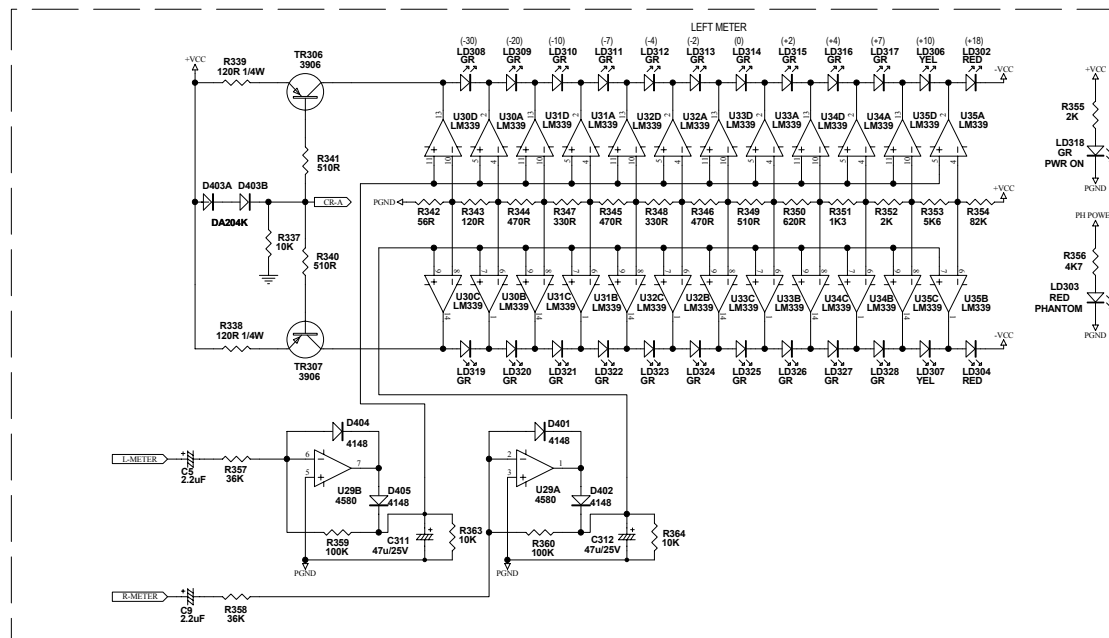
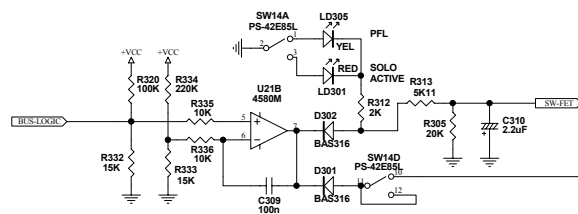
XM-12PU1 (1/2)



Title			XM-12PU1	
Size	A3	Model No.	XM-12	Revision
Date:	27-Aug-2005	Sheet	1 of 2	VER050304
File:	XM-12PU1.SCH	Drawn By:	Bas	

The schematic diagram illustrates the audio amplifier circuit, divided into three main sections: CTRL ROOM SOURCE, CTRL ROOM LEFT, and CTRL ROOM RIGHT.

CTRL ROOM SOURCE: This section features a SWIFT input and a MAIN MIX input. The MAIN MIX input is connected to a network of resistors (R301, R302, R303, R304, R305, R306, R307, R308, R309, R310, R311, R312, R313, R314, R315, R316, R317, R318, R319, R320, R321, R322, R323, R324, R325, R326, R327, R328, R329, R330, R331, R332, R333, R334, R335, R336, R337, R338, R339, R340, R341, R342, R343, R344, R345, R346, R347, R348, R349, R350, R351, R352, R353, R354, R355, R356, R357, R358, R359, R360, R361, R362, R363, R364, R365, R366, R367, R368, R369, R370, R371, R372, R373, R374, R375, R376, R377, R378, R379, R380, R381, R382, R383, R384, R385, R386, R387, R388, R389, R390, R391, R392, R393, R394, R395, R396, R397, R398, R399, R400, R401, R402, R403, R404, R405, R406, R407, R408, R409, R410, R411, R412, R413, R414, R415, R416, R417, R418, R419, R420, R421, R422, R423, R424, R425, R426, R427, R428, R429, R430, R431, R432, R433, R434, R435, R436, R437, R438, R439, R440, R441, R442, R443, R444, R445, R446, R447, R448, R449, R450, R451, R452, R453, R454, R455, R456, R457, R458, R459, R460, R461, R462, R463, R464, R465, R466, R467, R468, R469, R470, R471, R472, R473, R474, R475, R476, R477, R478, R479, R480, R481, R482, R483, R484, R485, R486, R487, R488, R489, R490, R491, R492, R493, R494, R495, R496, R497, R498, R499, R500, R501, R502, R503, R504, R505, R506, R507, R508, R509, R510, R511, R512, R513, R514, R515, R516, R517, R518, R519, R520, R521, R522, R523, R524, R525, R526, R527, R528, R529, R530, R531, R532, R533, R534, R535, R536, R537, R538, R539, R540, R541, R542, R543, R544, R545, R546, R547, R548, R549, R550, R551, R552, R553, R554, R555, R556, R557, R558, R559, R560, R561, R562, R563, R564, R565, R566, R567, R568, R569, R570, R571, R572, R573, R574, R575, R576, R577, R578, R579, R580, R581, R582, R583, R584, R585, R586, R587, R588, R589, R590, R591, R592, R593, R594, R595, R596, R597, R598, R599, R600, R601, R602, R603, R604, R605, R606, R607, R608, R609, R610, R611, R612, R613, R614, R615, R616, R617, R618, R619, R620, R621, R622, R623, R624, R625, R626, R627, R628, R629, R630, R631, R632, R633, R634, R635, R636, R637, R638, R639, R640, R641, R642, R643, R644, R645, R646, R647, R648, R649, R650, R651, R652, R653, R654, R655, R656, R657, R658, R659, R660, R661, R662, R663, R664, R665, R666, R667, R668, R669, R670, R671, R672, R673, R674, R675, R676, R677, R678, R679, R680, R681, R682, R683, R684, R685, R686, R687, R688, R689, R690, R691, R692, R693, R694, R695, R696, R697, R698, R699, R700, R701, R702, R703, R704, R705, R706, R707, R708, R709, R710, R711, R712, R713, R714, R715, R716, R717, R718, R719, R720, R721, R722, R723, R724, R725, R726, R727, R728, R729, R730, R731, R732, R733, R734, R735, R736, R737, R738, R739, R740, R741, R742, R743, R744, R745, R746, R747, R748, R749, R750, R751, R752, R753, R754, R755, R756, R757, R758, R759, R760, R761, R762, R763, R764, R765, R766, R767, R768, R769, R770, R771, R772, R773, R774, R775, R776, R777, R778, R779, R780, R781, R782, R783, R784, R785, R786, R787, R788, R789, R790, R791, R792, R793, R794, R795, R796, R797, R798, R799, R800, R801, R802, R803, R804, R805, R806, R807, R808, R809, R810, R811, R812, R813, R814, R815, R816, R817, R818, R819, R820, R821, R822, R823, R824, R825, R826, R827, R828, R829, R830, R831, R832, R833, R834, R835, R836, R837, R838, R839, R840, R841, R842, R843, R844, R845, R846, R847, R848, R849, R850, R851, R852, R853, R854, R855, R856, R857, R858, R859, R860, R861, R862, R863, R864, R865, R866, R867, R868, R869, R870, R871, R872, R873, R874, R875, R876, R877, R878, R879, R880, R881, R882, R883, R884, R885, R886, R887, R888, R889, R890, R891, R892, R893, R894, R895, R896, R897, R898, R899, R900, R901, R902, R903, R904, R905, R906, R907, R908, R909, R910, R911, R912, R913, R914, R915, R916, R917, R918, R919, R920, R921, R922, R923, R924, R925, R926, R927, R928, R929, R930, R931, R932, R933, R934, R935, R936, R937, R938, R939, R940, R941, R942, R943, R944, R945, R946, R947, R948, R949, R950, R951, R952, R953, R954, R955, R956, R957, R958, R959, R960, R961, R962, R963, R964, R965, R966, R967, R968, R969, R970, R971, R972, R973, R974, R975, R976, R977, R978, R979, R980, R981, R982, R983, R984, R985, R986, R987, R988, R989, R990, R991, R992, R993, R994, R995, R996, R997, R998, R999, R1000, R1001, R1002, R1003, R1004, R1005, R1006, R1007, R1008, R1009, R1010, R1011, R1012, R1013, R1014, R1015, R1016, R1017, R1018, R1019, R1020, R1021, R1022, R1023, R1024, R1025, R1026, R1027, R1028, R1029, R1030, R1031, R1032, R1033, R1034, R1035, R1036, R1037, R1038, R1039, R1040, R1041, R1042, R1043, R1044, R1045, R1046, R1047, R1048, R1049, R1050, R1051, R1052, R1053, R1054, R1055, R1056, R1057, R1058, R1059, R1060, R1061, R1062, R1063, R1064, R1065, R1066, R1067, R1068, R1069, R1070, R1071, R1072, R1073, R1074, R1075, R1076, R1077, R1078, R1079, R1080, R1081, R1082, R1083



Title		XM12MN1	
Size A3	Model No:	XM-12D	Revision VER050429
Date:	16-Aug-2005	Sheet	7 of 8
File:	XM5822-1 SCH	Drawn By	TSR

XM12MN1 (3/5)

MAIN OUT (BALANCED)

MAIN MIX LEFT

MAIN MIX RIGHT

ALT 3-4

ALT 3/4 OUT

AUX1 SEND

AUX2 SEND

**SW14: SOLO MODE

2TK TO MIX

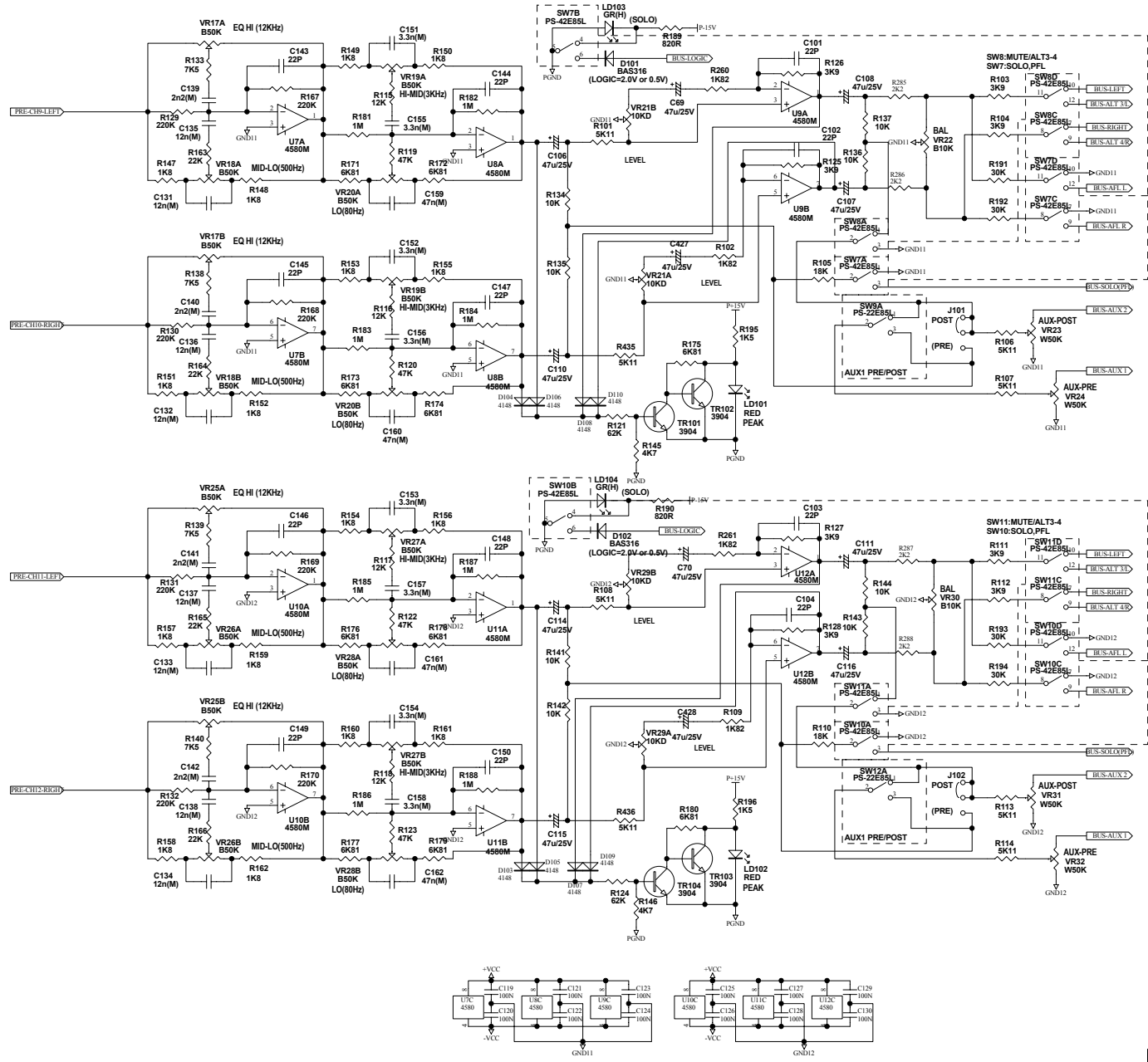
AUX RETURN 1

AUX RETURN 2

EFX TO AUX1

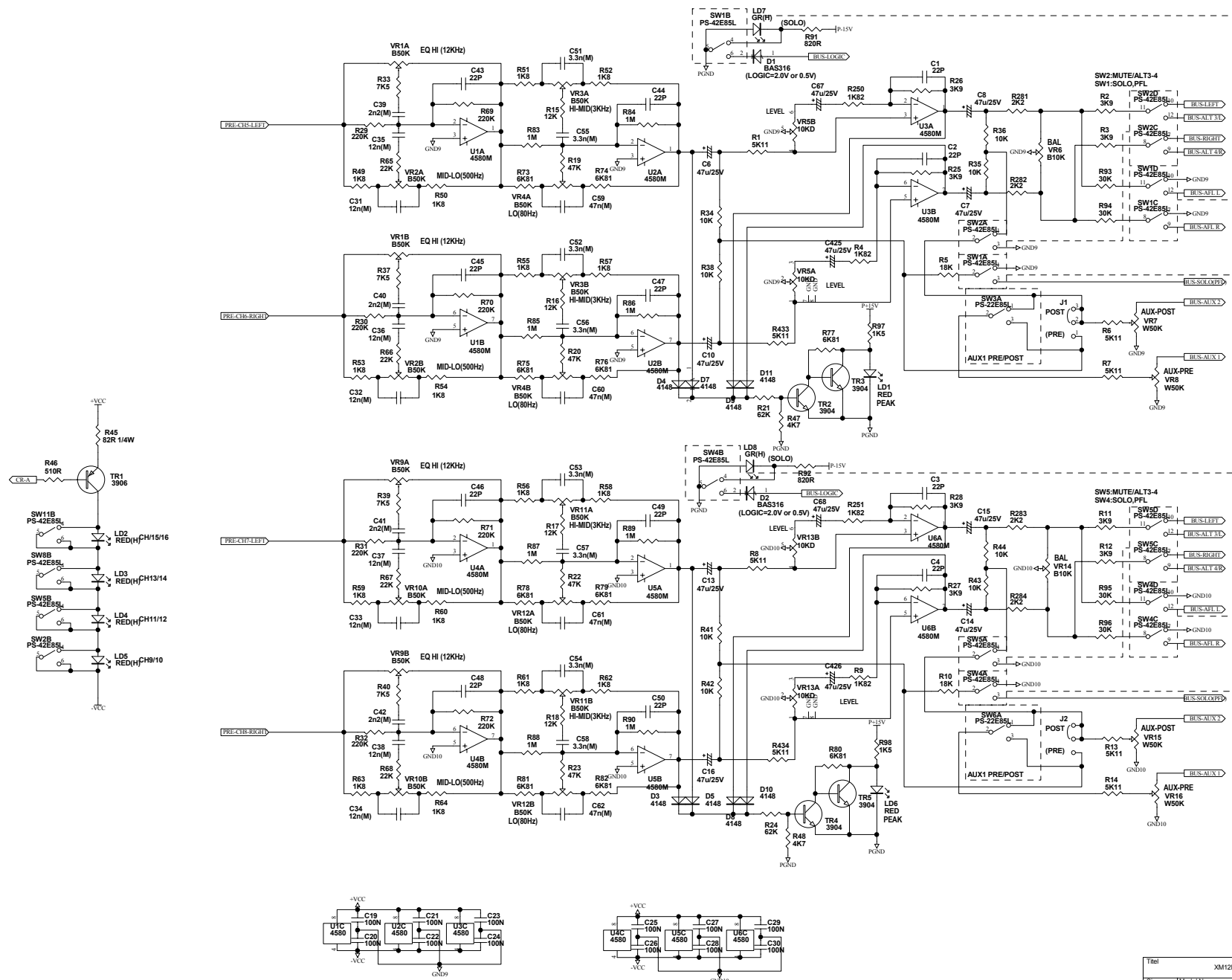
Title		XM12MN1	
Size	Model No:	Revision	
A3	XM-12D	VER050429	
Date:	16-Aug-2005	Sheet	6 of 8
File:	YM5442-1.SCH	Drawn By:	YSR

XM12MN1 (2/5)



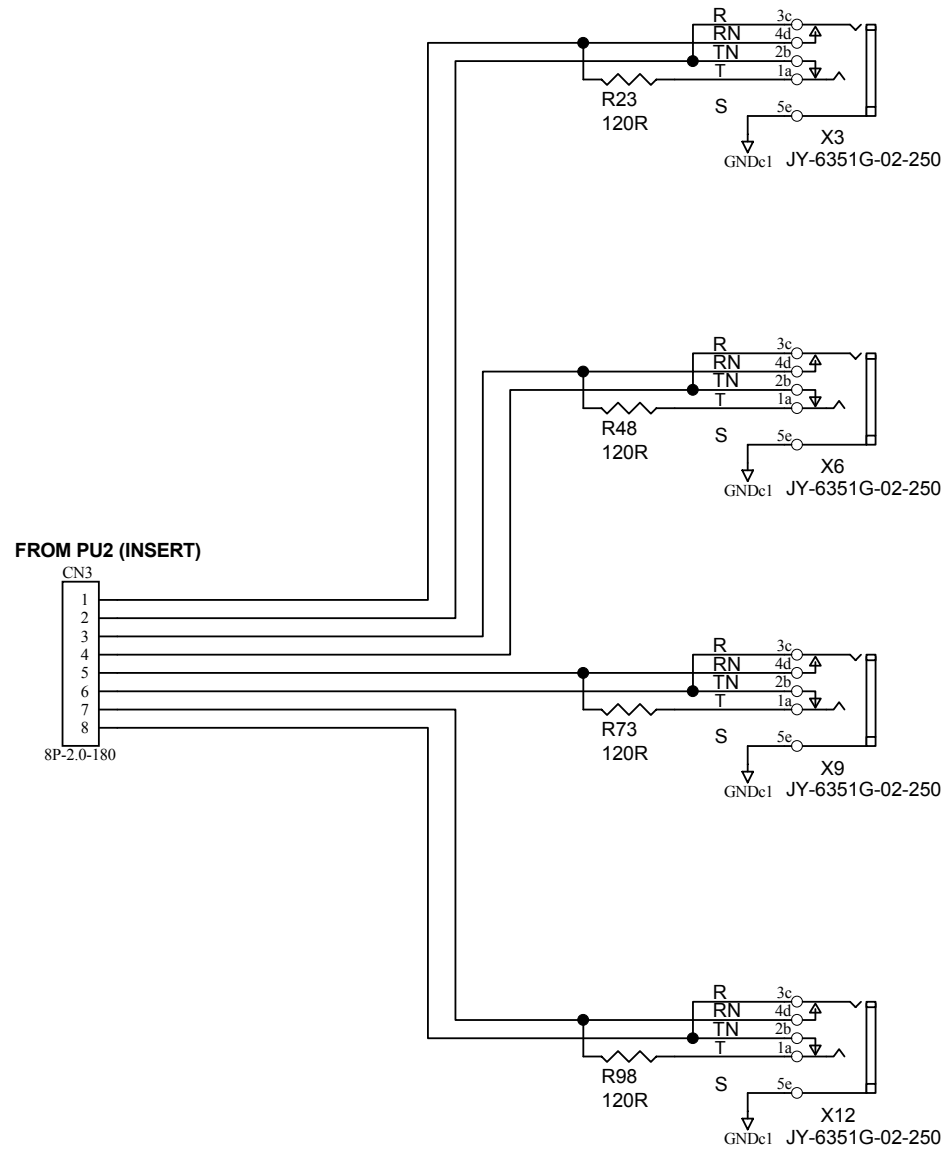
Title				XM12MN1			
Size		Model No:			Revision		
A3		XM-12D			VER050429		
Date:		16-Aug-2005			Sheet		5 of 8
File:		XM12MN~4 SCH			Drawn By:		TSB

XM12MN1 (1/5)



Title			
XM12MN1			
Size	Model No.	Revision	
A3	XM-12D	VER050429	
Date:	16-Aug-2005	Sheet	4 of 8
File:	XM12MN1-3.SCH	Drawn By:	YSL

XM-12PU4 (1/1)



Titel				
XM-12PU4				
Size	Model No:			Revision
A4	XM-12			VER050308
Date:	16-Aug-2005		Sheet	1 of 1
File:	XM-12P~1.SCH		Drawn By:	Bao.