

NEW INSTALLATION PRODUCTS

JANUARY 2011

VERSO SERIES

PORTABLE SPEAKERS
an ECLER & GIUGIARO DESIGN project



- A new self-powered subwoofer cabinet has been added to the range: the VERSO SB115P. 15" driver and 500 W RMS integrated amplifier.



- Passive models power: 150, 250 and 350 W RMS (VERSO 8, 10 and 12)

- Self-powered models power: 200, 300 and 400 W RMS (VERSO 8P, 10P and 12P)



TIP: you can use the VERSO speakers in a horizontal position, as stage monitors. Their shape provides for the precise angle for this application, without the need for any additional accessory.

MKT

AUDEO SERIES DESIGN SPEAKERS

an ECLER & GIUGIARO DESIGN project



A new self-powered subwoofer unit has been added to the range: AUDEO SB110P. 10" driver. 150 W RMS integrated amplifier



MKT

AUDEO SERIES DESIGN SPEAKERS

an ECLER & GIUGIARO DESIGN project

wecler



- Full range, 2-way cabinets
- Three models: AUDEO 103, AUDEO 106 and AUDEO 108
- Made of reinforced ABS - available in black or white
- Euroblock connector
- 8 ohms / 100 V line (4 power taps) operating switch
- Wall mounting support included (as well as cable concealing system)
- IP 54 class for outdoor installation
- Protective grille at the front with anti-rust treatment

• Available accessories:

DSTANDAUEO



MSTANDAUEO



MKT



TIP: use the cable concealing cavity to hide the cables and get a clean, perfect looking installation

ICPLUS IN CEILING HIGH END SPEAKERS



- Series of high quality in ceiling speakers
- 2 models: 6" & 8" models (full range)
- Main characteristics:
 - High quality woofer and tweeter
 - Higher power than IC series
 - 90% Tools free installation (spin gesture + locking clip and screw)
 - Construction in 4 mechanical bodies: frame, speaker, front grill and rear cover
 - Optional transformer for 100V line installation
 - Optional back can



Optional transformer for 100V line installation



Optional back can

MKT

ECL106i IN CEILING SPEAKERS



In ceiling high-efficiency affordable loudspeakers, suitable for public address and sound systems employing 100 V lines where high sound pressure with low amplifier's power is a requirement. They include aluminium front grill and fast mounting system by means of their retractile clips.

Available in the standard (ECL106i) and fire rated (ECL106iFR), this last one being compliant with the BS-5839-8 regulation.

- One way, 6" transducer
- Nominal impedance: 8 Ω
- Power: 6 W RMS
- Integrated 100 V line transformer
- 100 V line power taps: 0.75, 1.5, 3, 6 W
- Frequency response (± 3 dB): 100 Hz – 18 kHz
- Max SPL: 101 dB
- 1 W / 1 m sensitivity: 93 dB
- External diameter: 200 mm
- Recommended cut out diameter: 185 mm
- The ECL106i**FR** includes all the items required to comply with the BS 5839-8 to become a fire rated loudspeaker:
 - Ceramic connector
 - Thermal fuse
 - Fire-proof back can



MKT

UMAi LOUDSPEAKER CABINETS



UMAi series is the optimal solution for a wide range of applications including portable and fixed sound reinforcement, club applications, AV events and any installation requiring professional sound quality and reliability.

Manufactured in 15mm birch plywood, the UMAi series is based in high performance, top quality 12", 15" and 18" woofers and high end compression drivers to provide a clear natural sound for both musical and speech programmes in a compact and light enclosure.

- 15mm birch plywood full range 2 way loudspeaker cabinets
- Axis Asymmetrical Dispersion Horn (12i and 15i models)
- Fast set-up thanks to integrated lateral and extra back handles
- Textured black paint finish
- Protective front grid
- M10 internally steel reinforced flying points
- Speakon® connectors integrated in back handle
- 35 mm top-hat pole mount socket

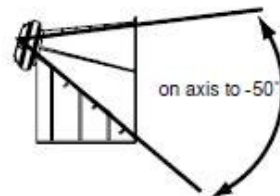
UMA 112i (350 W RMS @ 8 ohms)



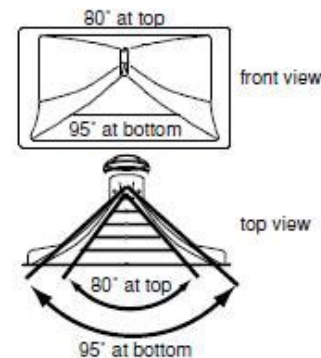
UMA 115i (450 W RMS @ 8 ohms)



UMA SB118i (500 W RMS @ 8 ohms)



Vertical



Horizontal

MKT

IG108 IN-GROUND SPEAKER



The IG108 is an in-ground weatherproof loudspeaker (IP65) with an omni directional horizontal dispersion pattern (360°). It is ideal for music and message applications in outdoor areas where a reliable yet high quality sound system is required.

- IP65 outdoor rated loudspeaker
- 100 W RMS @ 8 ohms
- Efficiency: 91 dB SPL 1 W / 1 m
- 8 ohm / 100 V (7,5, 15, 30 o 60 W) tap switch
- 8" Kevlar woofer and 1" ACCW silk dome tweeter
- Frequency response (-6 dB): 65 Hz to 22 kHz
- Omni directional horizontal coverage pattern (a circular area with an average radius of 4 to 6 meters can be covered by one unit)
- Security ground bracket included
- Diameter: 366 mm
- Height: 394 mm
- Weight: 7.5 kg



MKT

EVENTIA1422 LIVE EVENT MIXER



EVENTIA1422 is a live event mixer which joins versatility and high quality in a compact and user-friendly format. It can cover a wide range of applications, like conference rooms, small theatres, education classrooms, cultural centres, sports facilities, churches, corporate events, concerts, etc.



- 6 MIC/LINE balanced mono input channels with 75 Hz HPF and channel insert points
- 4 LINE balanced stereo input channels
- 3 band equaliser in each input channel
- 2 auxiliary mono sends with stereo returns
- Main and secondary mix buses
- Monitor and headphones independent outputs
- Phantom power available for channels 1 to 6
- Recording send and return buses
- AFL / PFL solo mode working modes
- Switchable AC mains voltage



MKT

2VSP DOUBLE SOUND SOURCE



Double sound source including one FM radio tuner and one multi-format audio player: CD-drive, USB slot and SD card slot readers

- Double-deck audio player
- FM TUNER with 60 presets
- CD / USB / SD card readers (PCM and mp3 formats supported)
- Antishock system in CD reader
- FM tuner RCA stereo output
- CD / USB / SD card player RCA stereo output
- PRIORITY RCA stereo output (deliver the same audio as the CD / USB / SD player until it finishes, switching to the FM tuner audio)
- Double front panel LCD display (player and tuner)
- ID3 tags support
- Folders reading support
- IR remote control
- Vari-Speed control for tracks' tempo modification
- REPEAT and PROGRAM functions

MKT

MIMO54 4 INPUTS / 4 OUTPUT ZONES MATRIX



- 4 stereo program inputs (2 MIC/LINE & 2 LINE). Switchable Phantom for mikes
- 4 mono zone outputs with 2 bands tone control, per output
- 5th MIC/LINE dual function input, ready to behave as a PRIORITY message, EVACUATION message or BOTH
- Independent source selection and volume adjustment, per zone
- Remote wall panels for zones' volume adjustment and/or source selection
- Local (front panel) or remote (wall panels) control method selection
- Monitor section: output zones and 5th input
- Euroblock type connectors for inputs and outputs, plus XLR on mike input #1
- Front panel knobs replaceable by security caps



• **Soon updated to admit the new MPAGE4 paging station**



TIP: The PRIO/EVAC dual function lets you integrate in a seamless way the MIMO54 (the heart of your public address system) with fire detection and other third party emergency systems, being able to fulfill safety regulations, which are being increasingly demanded.

MKT

SAM SERIES INSTALLATION MIXERS



- The classics get updated
 - New aesthetics
 - New “LOW LINE” input



TIP: The SAM "MUTE" remote control input allows connection of fire detection systems or any other safety device that must mute the mixer by activating this control signal, to let an emergency message be delivered by another sound system.

MKT

MPA-R SERIES MULTICHANNEL AMPLIFIERS



- More updated classics



(*) SPM technology: The SPM Technology combines the use of switching MOSFETs with an efficient protection system that acts in a non-aggressive way on the sound quality. ECLER was the first company that developed and patented a system able to use the switching MOSFETs in audio amplifiers, taking benefit of their advantages thanks to the non-destructive protection systems.

MKT

LPA SERIES STEREO AMPLIFIERS



The new LPA series brings all the classic, well-known reliability and amplification quality of Ecler to a new light-weight format that is versatile and affordable.

- Ultra light technology (5.6, 6.8 and 9.2 kg: LPA6000, 10000 and 16000)
- Built-in crossover filter
- Efficient progressive ventilation system
- LED indicators: power-on and standby (POWER ON, STD BY), signal presence (SIGNAL), clipping (CLIP), operating mode (STEREO, BRIDGE), crossover activated (XOVER) and protections activated (PROTECT)
- Efficient short-circuit, overheat and DC signal protection system to prevent damage to the amplifier and/or the loudspeakers connected to it
- Permanently activated built-in anti-clip circuit
- Operating mode selector: STEREO, PARALLEL and BRIDGE
- Balanced inputs via XLR3 connectors and 6.35 mm stereo jack. Unbalanced inputs via RCA connectors.
- Amplified outputs with terminal-type connectors and Speakon® connectors



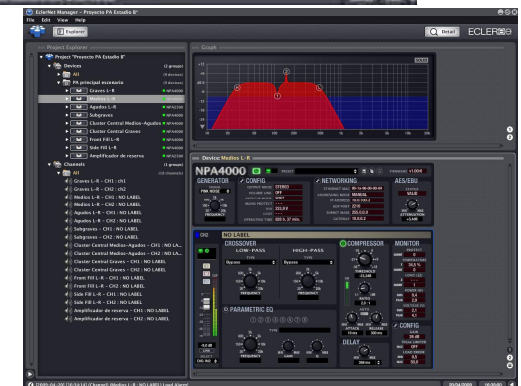
LPA power fast guide		LPA6000	LPA10000	LPA16000
POWER 20-20kHz 1% THD (Both channels driven)	4Ω Stereo	320 W RMS	500 W RMS	760 W RMS
	8Ω Stereo	210 W RMS	330 W RMS	450 W RMS
	8Ω Bridged	640 W RMS	1000 W RMS	1520 W RMS

MKT

NPA SERIES NETWORKABLE STEREO AMPLIFIERS



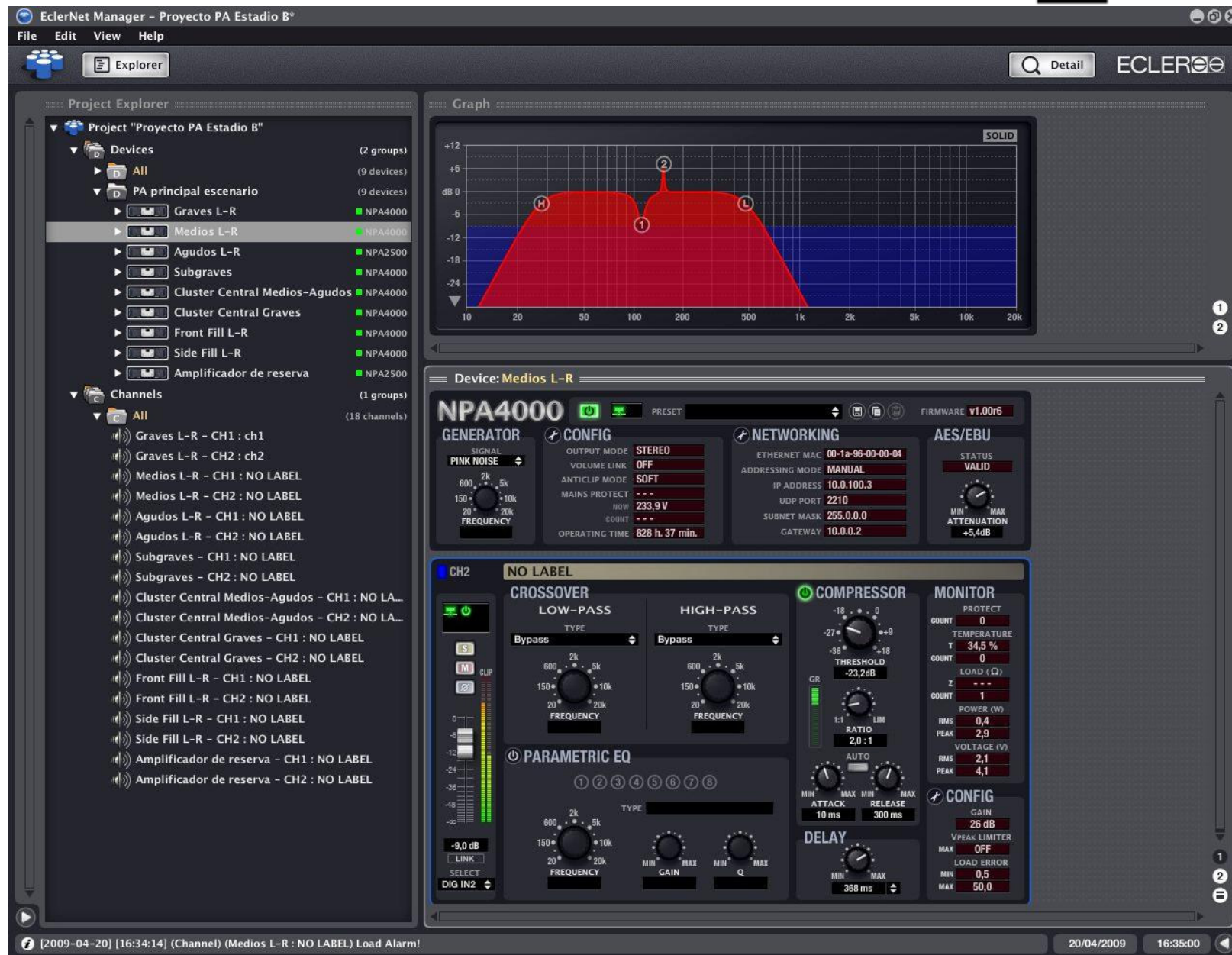
- Two available models: NPA 2500T and NPA 4000T, integrating **SPM TECHNOLOGY**
- Analog and digital (AES/EBU) inputs
- Integrated Amiclab DSP module
- Integrated Eclernet remote control module (includes all the Amiclab DSP functions + monitoring and management of alarms, protection, temperature, load, output power, mains voltage, devices and channels groups, Vpeak limiter, report log file, etc.)
- Temperature-controlled variable speed forced ventilation
- Soft Start
- RJ45 (Ethernet) and RS-232 (Crestron, AMX, etc.) remote control connections



TIP: even in an existing and working Ethernet network, wherever there's an Ethernet free port, you can connect an amplifier and build your amplifiers' network. Then you can configure and power up your amplifiers' network and, after that, monitor and control the system from any networked PC, or even from home, via Internet.

MKT

NPA SERIES NETWORKABLE AMPLIFIERS



EclerNet Manager software screenshot

MKT

NZA NETWORKABLE MULTICHANNEL AMPLIFIERS



- Series of multichannel amplifiers with integrated DSP processor & Ethernet remote control

- Configurations:

- 4 x 80 W @ 4 ohms
- 4 x 190 W @ 4 ohms
- 4 x 420 W @ 4 ohms
- 6 x 80 W @ 4 ohms
- 6 x 200 W @ 4 ohms

- NEW: 4 x 700 W @ 4 ohms, coming soon**

- Step ahead of the MPA series, with a technological profile that let them enter those projects that require networking and integration as a must feature

- Configuration and remote control by means of the EclerNet platform: using the same application the installer can create a global audio system that includes the processing (MIMO88 units) and the amplification (NPAs, NZAs), as well as the integration with many other third party systems which coexist in the same



MKT

HZA HIGH IMPEDANCE (100 V) MULTICHANNEL AMPLIFIERS



HZA4-70, first model of the series:

- 4 mono balanced inputs
- 4 x 70 W amplified outputs (100V line level)
- 4 volume remote control ports (0 – 10 VDC)
- Euroblock connectors
- **SPM 100 amplification Technology - Channel N** (no 100 V output transformers used):
 - Improved frequency response (specially at the low-end)
 - Convection cooling (100% silent and increased reliability)
 - Great efficiency
 - Low weight
- Auto stand-by function after 2 minutes without audio input signals, with instantaneous auto-recovery
- Thermal protection
- Overload protection
- Anti-clip system



MIMO88 8 INPUTS / 8 OUTPUTS DIGITAL MATRIX

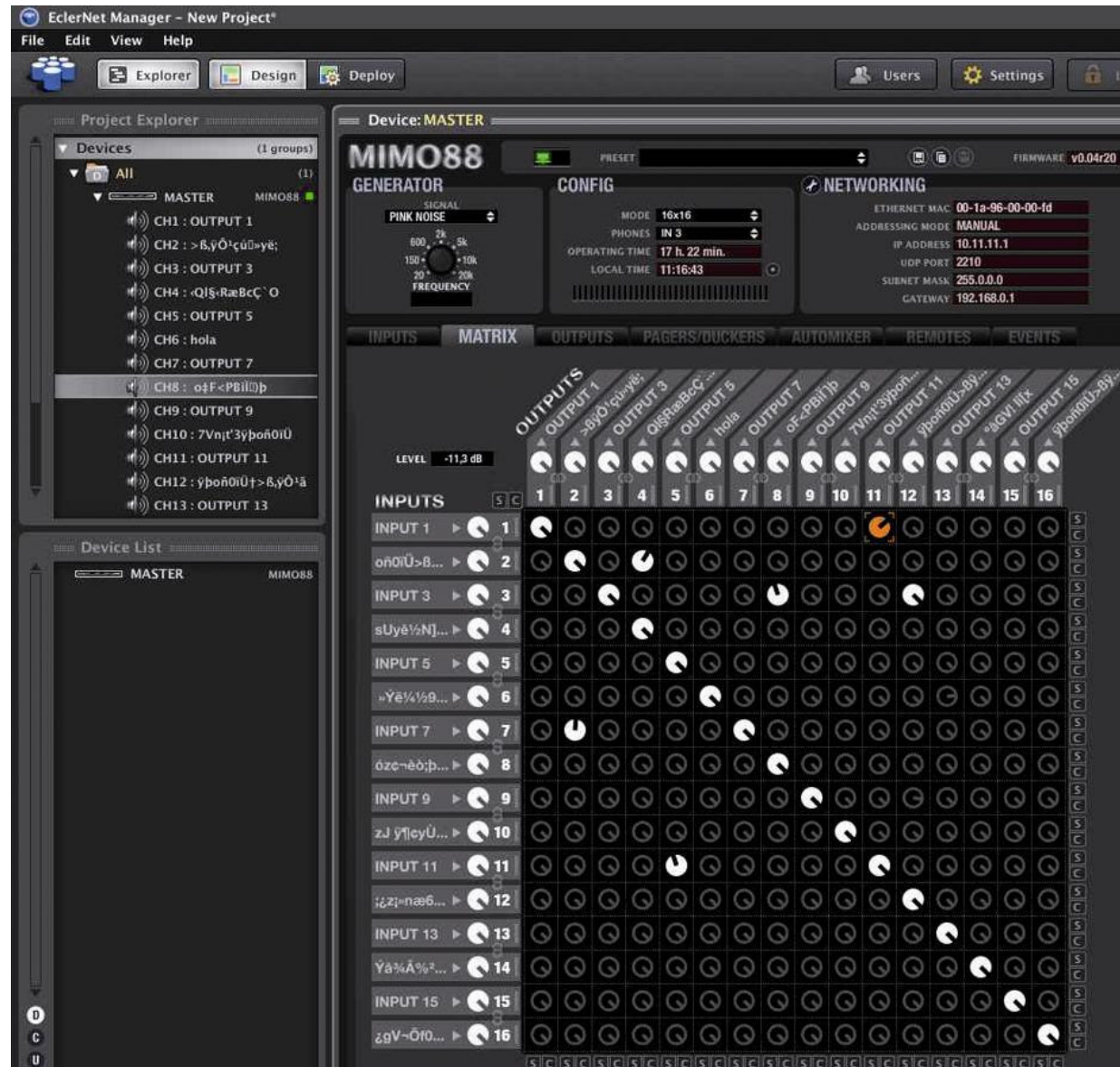


- 8 MIC/LINE mono inputs / 8 mono outputs.
- Expandable to 16 inputs / 16 outputs to become a real 16 x 16 matrix (via the digital audio bus between MIMO88 units, a CAT5 connection which can handle 100 meter distances)
- 8 GPI and 8 GPO ports
- Fully programmable and controllable via EclerNet software (connected directly to the PC or by means of a network)
- Ethernet remote control with multi-client simultaneous connections (with EclerNet software or third party custom applications)
- Digital control bus for the **WPTOUCH (MIMO digital & touch sensitive remote wall panel)** and the **MPAGE16 (desktop digital & touch sensitive paging station)**
- A few processing bits:
 - Mono or stereo channel treatment
 - Signal generator, delays, full parametric EQ
 - Noise gate & compressor at each input
 - Compressor / limiter at each output
 - Ducker / Pager
 - Automatic mixer
 - Presets save & recovery
 - Events management (incl. schedule and boolean logic)
- Two-level software application philosophy:
 - Designer's standard application (all the power, all the features)
 - User custom-made GUI (each EclerNet client has his own surface control, with his dedicated faders, knobs, buttons, text & graphics)



MKT

MIMO88 8 INPUTS / 8 OUTPUTS DIGITAL MATRIX



MKT

WP series



WPTOUCH

- Digital remote control, compatible with the incoming MIMO88 digital matrix (CAN-BUS)
- 2 touch-sensitive keys, 1 touch-sensitive jog wheel, 1 IR receiver
- 2x16 char. LCD transfective display
- Programmable under the MIMO88 control (digital mode)
- Compatible with the MIMO54 for both volume control and source selection (analogue mode)
- Compatible with other products with 0-10 VDC ports (MPA, AMIC, AMPACK, etc.) for volume control (external power supply required in some cases)
- Recessed or top-wall mount with included accessory



WPVOL-IR

- IR to 0-10 VDC interface: wall panel receiver + IR remote control set, compatible with MPA, AMPACK, AMIC, NZA, etc.).
- Volume UP, DOWN & MUTE functions converted from IR pulses to VCA voltages
- Wall panel blind plate with IR receiver and activity LED (green-orange-red)
- Same aesthetics than WPVOL and WPVOL-SR
- Recessed or top-wall mount with included accessory

WP series



WPVOL & WPVOL-SR

- WPVOL: volume control
- WPVOL-SR: volume control and source selection for MIMO54
- WPVOL is compatible with products with 0-10 VDC ports (MPA, AMIC, AMPACK, etc.)
- Recessed or top wall-mount with included accessory



WPCNX-XLRM & XLRF

- Connection Wall Plate with male / female 3 pin XLR connector
- Screw-type connector at the back (no solder required)
- Recessed or top-wall mount with included accessory

MKT