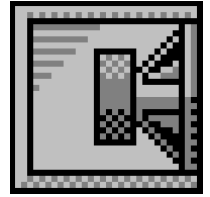


Custom Closed Box Design

By Poweraudio SRL, SC PowerAudio SRL



Box Properties

--Description--

Name:

Type: Closed Box

Shape: Prism, square

--Box Parameters--

Vb = 60 liters

Qtc = 0.661

QL = 6.809

F3 = 56.85 Hz

Fill = heavy

Driver Properties

--Description--

Name:

Type: Standard one-way driver

--Configuration--

No. of Drivers = 1

--Driver Parameters--

Fs = 31 Hz

Qms = 4.44

Vas = 142 liters

Xmax = 8 mm

Sd = 540 sq.cm

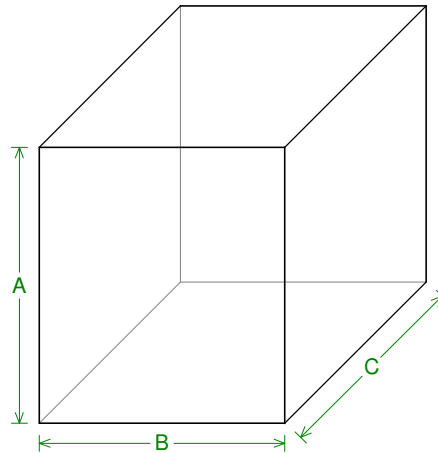
Qes = 0.56

Re = 5.6 ohms

Le = 0.85 mH

Z = 8 ohms

Pe = 125 watts



--External Dimensions--

A = 450 mm

B = 400 mm

C = 434.2 mm

--Internal Dimensions--

A = 414 mm

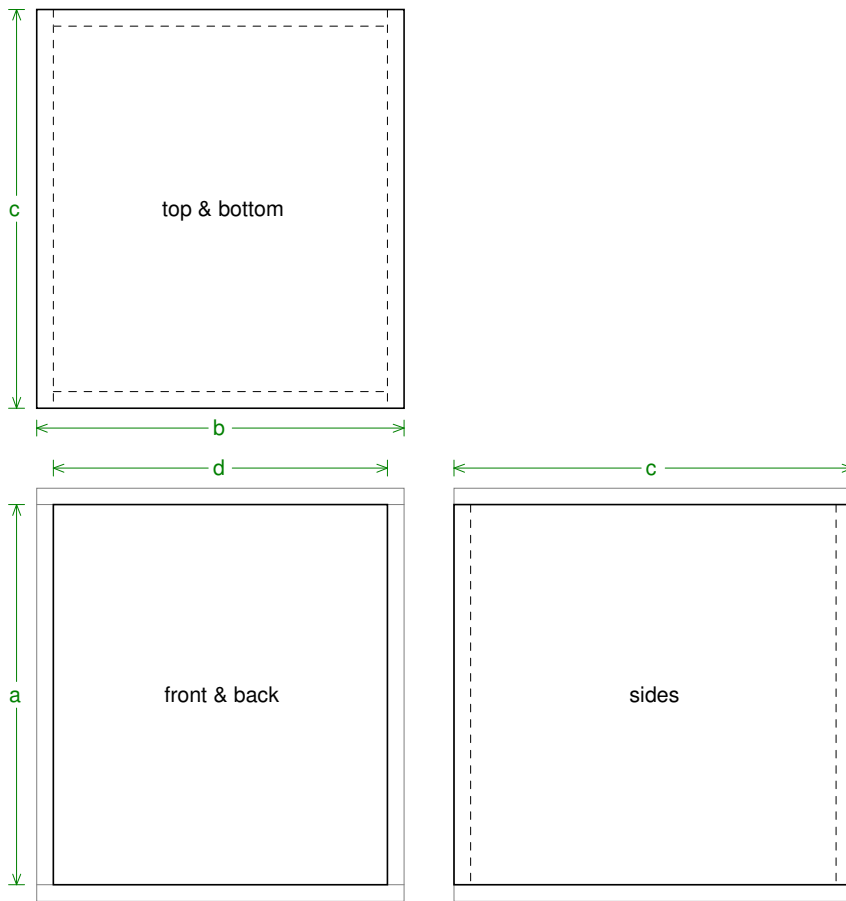
B = 364 mm

C = 398.2 mm

--Wall Thickness--

Front = 18 mm

Side = 18 mm

**Box Parts**

--*Square Prism Box Parts*--

1 Top, 1 Bottom: depth (c) = 434.2 mm
width (b) = 400, thickness = 18 mm

1 Front, 1 Back: height (a) = 414 mm
width (d) = 364, thickness = 18 mm

2 Sides: height (a) = 414 mm
depth (c) = 434.2, thickness = 18 mm

--*Driver Mounting*--
Mounting:



Wiring Diagram

