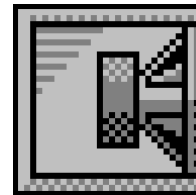


# Custom Vented Box Design

By NeXuS3, Nexo



## Box Properties

### --Description--

Name:

Type: Vented Box

Shape: Prism, square

### --Box Parameters--

Vb = 104.8 liters

Fb = 48.14 Hz

F3 = 41.76 Hz

Fill = minimal

### --Vents--

No. of Vents = 2

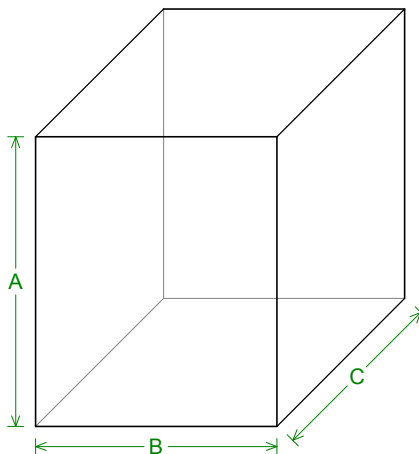
Vent shape = rectangle

Vent ends = one flush

Hv = 70 mm

Wv = 223 mm

Lv = 300 mm



### --External Dimensions--

A = 600 mm

B = 500 mm

C = 500 mm

### --Internal Dimensions--

A = 564 mm

B = 464 mm

C = 434 mm

### --Wall Thickness--

Front = 48 mm

Side = 18 mm

## Driver Properties

### --Description--

Name:

Type: Standard one-way driver

### --Configuration--

No. of Drivers = 1

### --Driver Parameters--

Fs = 34 Hz

Qms = 12.4

Vas = 178 liters

Xmax = 7 mm

Sd = 800 sq.cm

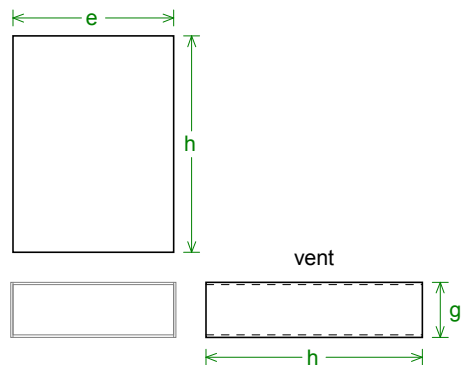
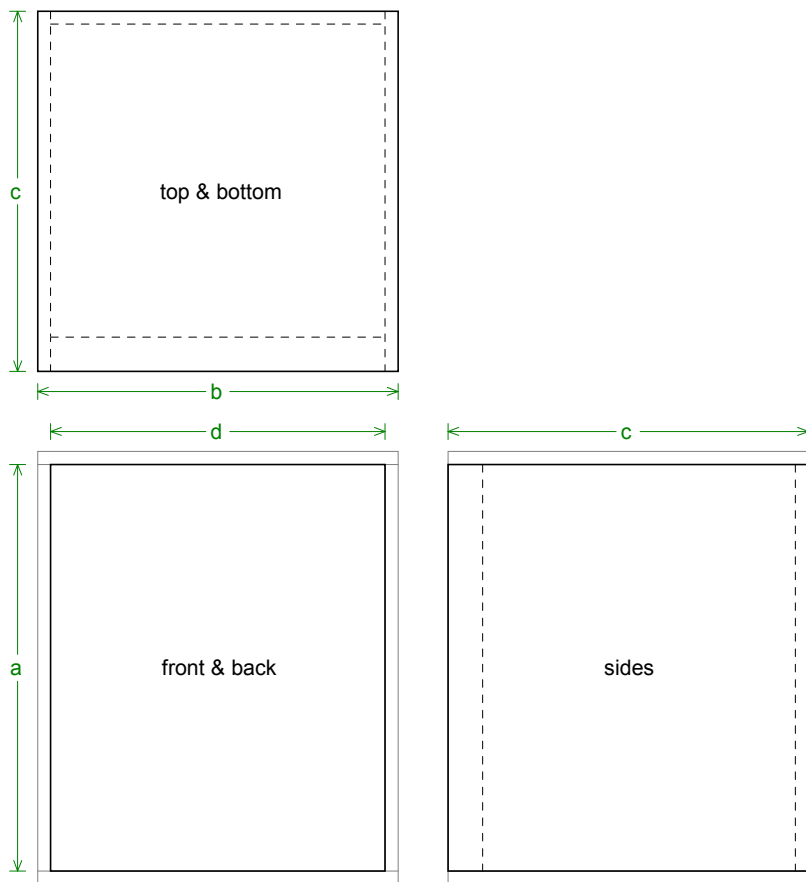
Qes = 0.39

Re = 6.1 ohms

Le = 1.9 mH

Z = 8 ohms

Pe = 500 watts



### Box Parts

#### --Square Prism Box Parts--

- 1 Top, 1 Bottom: depth (c) = 500 mm  
width (b) = 500, thickness = 18 mm
- 1 Front: height (a) = 564 mm  
width (d) = 464, thickness = 48 mm
- 1 Back: height (a) = 564 mm  
width (d) = 464, thickness = 18 mm
- 2 Sides: height (a) = 564 mm  
depth (c) = 500, thickness = 18 mm

#### --Vent Parts--

- 2 Tops, 2 Bottoms:  
width (e) = 223, length (h) = 300 mm  
thickness = 3.175 mm
- 4 Sides:  
height (g) = 76.35, length (h) = 300 mm  
thickness = 3.175 mm

#### --Driver Mounting-- Mounting:



Wiring Diagram

