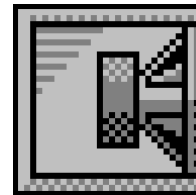


# Custom Vented Box Design

By NeXuS3, Nexo



## Box Properties

### --Description--

Name:

Type: Vented Box

Shape: Prism, square

### --Box Parameters--

Vb = 183.5 liters

Fb = 45.75 Hz

F3 = 41.31 Hz

Fill = minimal

### --Vents--

No. of Vents = 4

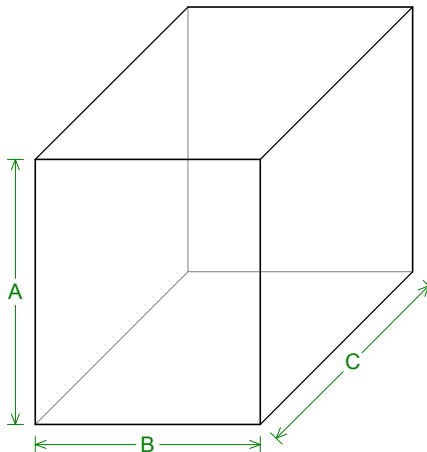
Vent shape = rectangle

Vent ends = one flush

Hv = 60 mm

Wv = 115 mm

Lv = 125 mm



### --External Dimensions--

A = 636 mm

B = 540 mm

C = 690 mm

### --Internal Dimensions--

A = 600 mm

B = 504 mm

C = 614 mm

### --Wall Thickness--

Front = 58 mm

Side = 18 mm

## Driver Properties

### --Description--

Name:

Type: Standard one-way driver

### --Configuration--

No. of Drivers = 1

### --Driver Parameters--

Fs = 39.8 Hz

Qms = 9.5

Vas = 156 liters

Xmax = 8.5 mm

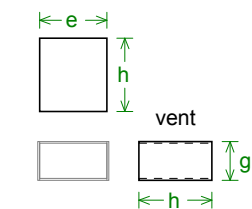
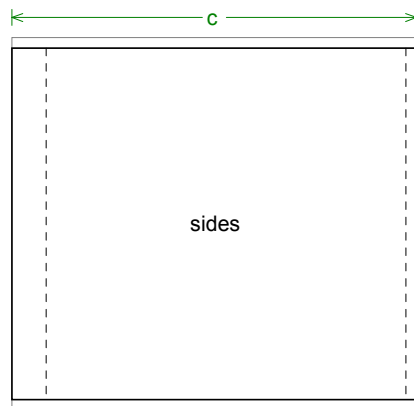
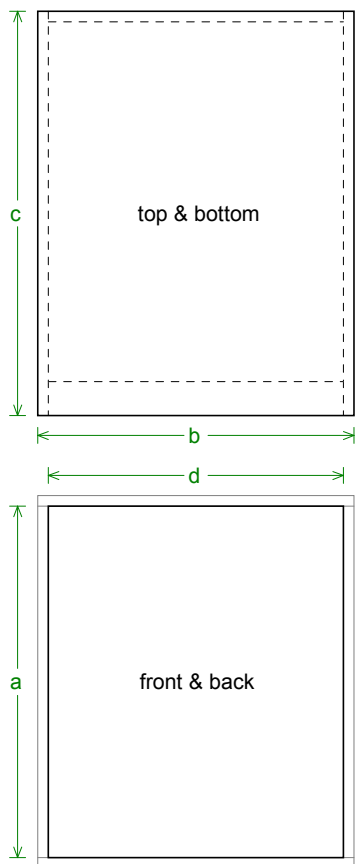
Sd = 1280 sq.cm

Qes = 0.42

Re = 5.5 ohms

Z = 8 ohms

Pe = 600 watts



### Box Parts

#### --Square Prism Box Parts--

- 1 Top, 1 Bottom: depth (c) = 690 mm  
width (b) = 540, thickness = 18 mm
- 1 Front: height (a) = 600 mm  
width (d) = 504, thickness = 58 mm
- 1 Back: height (a) = 600 mm  
width (d) = 504, thickness = 18 mm
- 2 Sides: height (a) = 600 mm  
depth (c) = 690, thickness = 18 mm

#### --Vent Parts--

- 4 Tops, 4 Bottoms:  
width (e) = 115, length (h) = 125 mm  
thickness = 3.175 mm
- 8 Sides:  
height (g) = 66.35, length (h) = 125 mm  
thickness = 3.175 mm

#### --Driver Mounting-- Mounting:



### Wiring Diagram

