

Box Properties

--Description--

Name:

Type: Bandpass Parallel Double-Tuned

Shape: Prism, Bandpass with two chambers

--Box Parameters--

Chamber 1 - lower-frequency

Vb = 113.8 liters

V(total) = 133.1 liters

Fb = 45 Hz

QL = 6.268

F3 = 49.09 Hz

Fill = none

--Vents--

No. of Vents = 1

Vent shape = rectangle

Vent ends = one flush

Hv = 550 mm

Wv = 55 mm

Lv = 316.1 mm

Chamber 2 - upper-frequency

Vb = 41.21 liters

V(total) = 39.33 liters

Fb = 105 Hz

QL = 6.745

F3 = 166.1 Hz

Fill = none

--Vents--

No. of Vents = 1

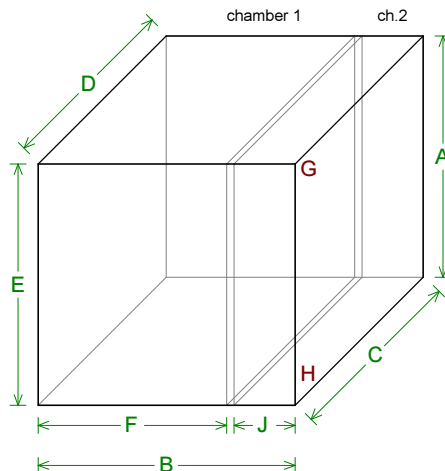
Vent shape = rectangle

Vent ends = one flush

Hv = 550 mm

Wv = 55 mm

Lv = 105.8 mm



--External Dimensions--

A = 586 mm

B = 624 mm

C = 586 mm

D = 586 mm

E = 586 mm

--Internal Dimensions--

A = 550 mm

C = 550 mm

D = 550 mm

E = 550 mm

F = 440 mm

J = 130 mm

--Wall Thickness--

Outer Sides = 18 mm

Inner Baffle = 18 mm

--Angles--

G = 90°

H = 90°

Driver Properties

--Description--

Name: MAG A1860

Type: Standard one-way driver

--Configuration--

No. of Drivers = 1

--Driver Parameters--

Fs = 39.8 Hz

Qms = 9.5

Vas = 156 liters

Xmax = 8.5 mm

Sd = 1280 sq.cm

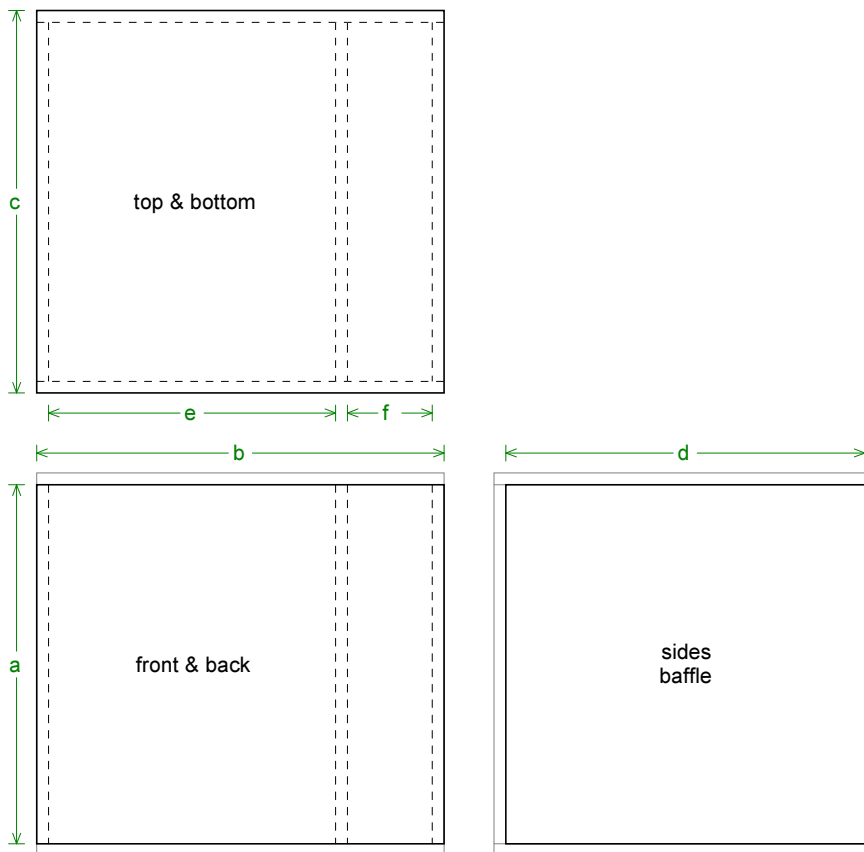
Qes = 0.42

Re = 5.5 ohms

Le = 2.6 mH

Z = 8 ohms

Pe = 600 watts



Box Parts

Box Shape: Bandpass Prism

1 Top, 1 Bottom: height (c) = 586 mm

width (b) = 624, thickness = 18 mm

1 Front, 1 Back: height (a) = 550 mm

width (b) = 624, thickness = 18 mm

3 Sides: height (a) = 550 mm

width (d) = 550, thickness = 18 mm

Baffle Location: e = 440, f = 130 mm

--Driver Mounting--

Mounting: Flush

Aim: Driver faces chamber 2

--Vent Parts--

1 Top, 1 Bottom: (chamber 1)

width (g) = 61.35, length (k) = 316.1 mm

thickness = 3.175 mm

2 Sides: (chamber 1)

height (h) = 550, length (k) = 316.1 mm

thickness = 3.175 mm

1 Top, 1 Bottom: (chamber 2)

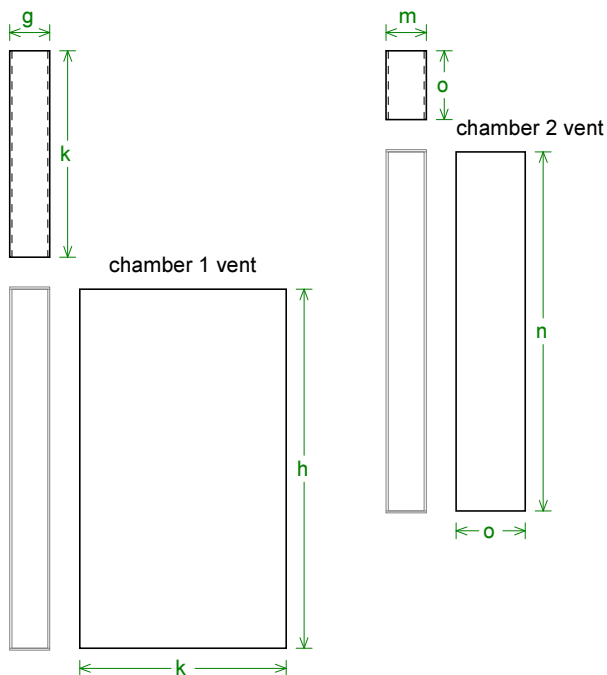
width (m) = 61.35, length (o) = 105.8 mm

thickness = 3.175 mm

2 Sides:

height (n) = 550, length (o) = 105.8 mm

thickness = 3.175 mm





Wiring Diagram

