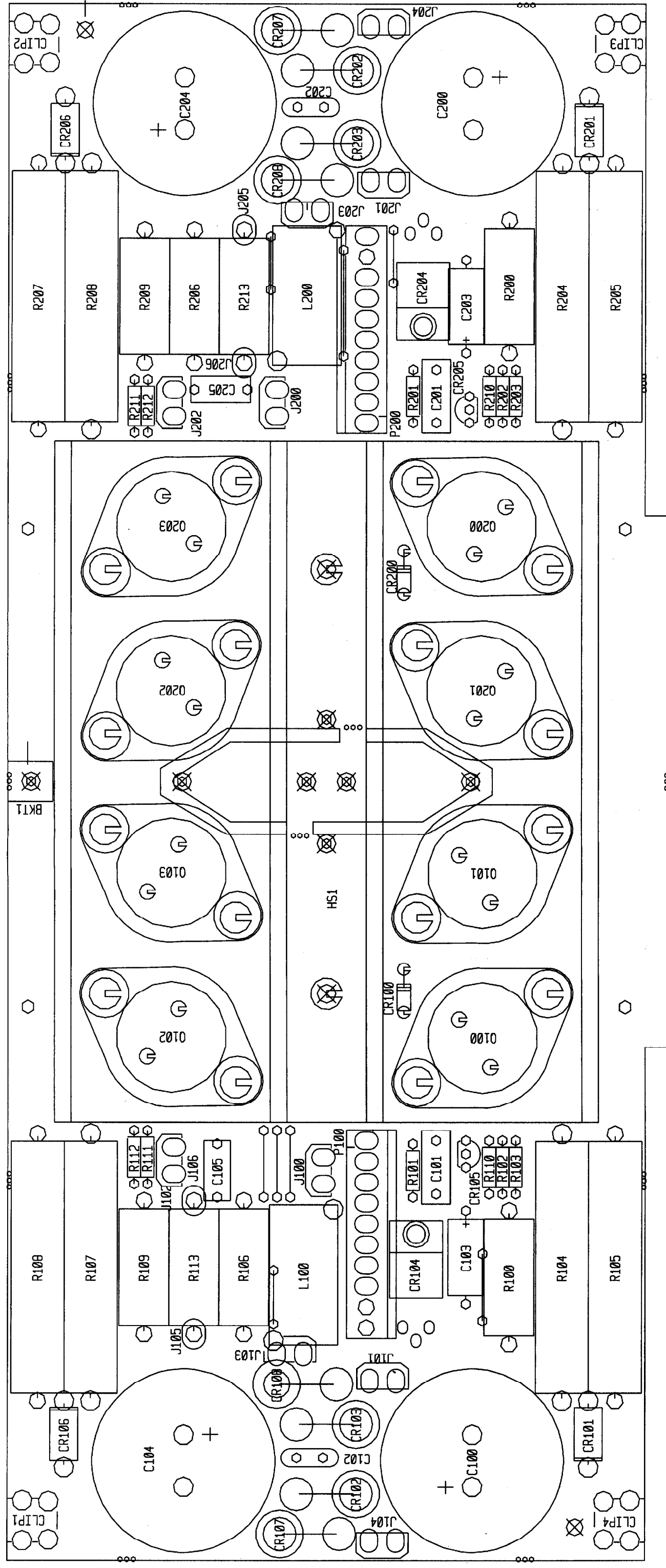


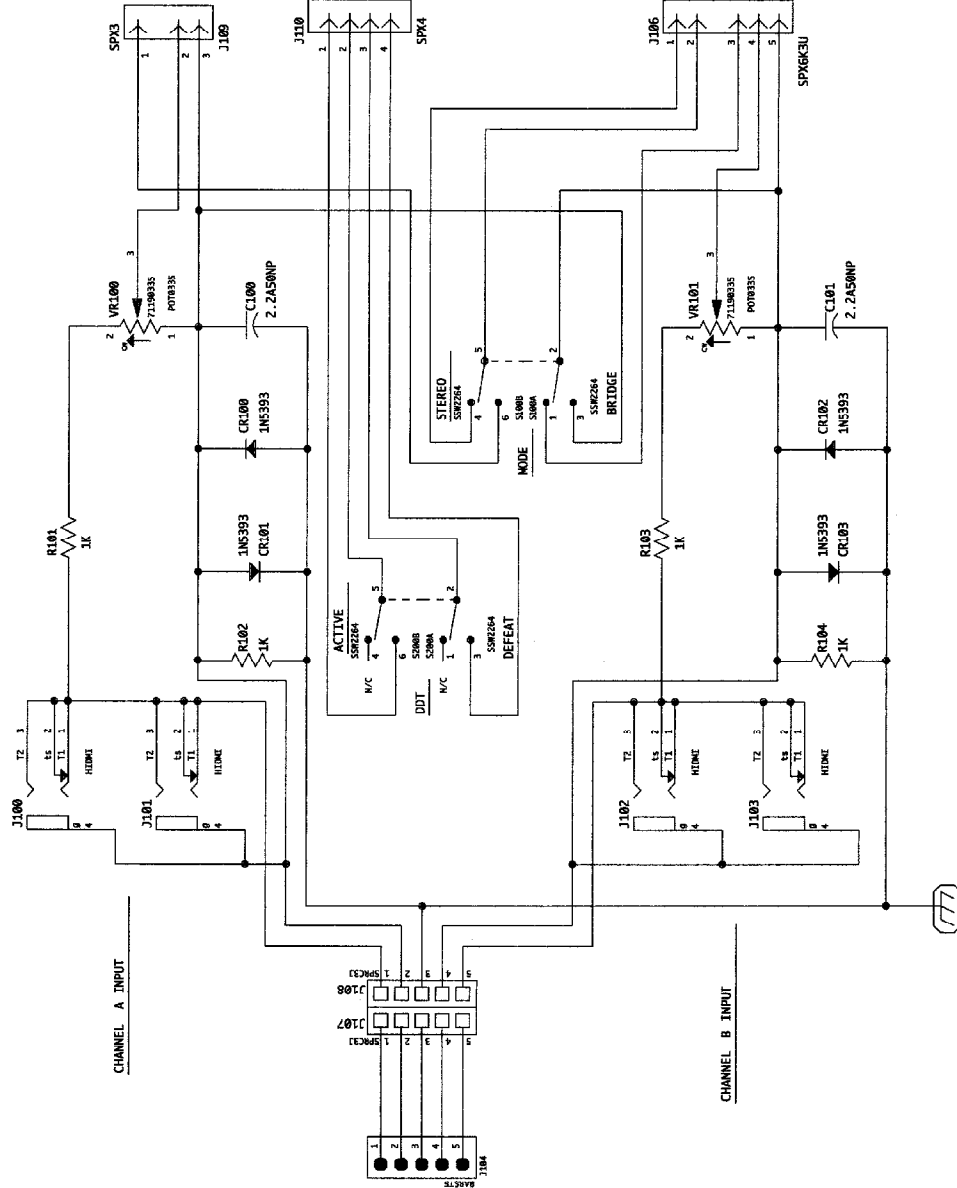
BOARD NAME: PV4C DRIVE									
** QTY.	NAME	VALUE	PART NUMBER	DESCRIPTION AND DEVICE DESIGNATIONS	1	RALEDG2	RALEDG2	70450578	

1	22A25	22A25	70320012	22MFD +/-20% 25VDC EL AXL	1	IN4148	4148	70464148	SE-8721-D-ON-25MM IDS REC CR122
1	1000SV50	1000SV50	70320147	1000MF-30/20%-50VDC-EL-R/S	2	IN4003	IN4003	70464003	IN4148 75V 10MA SILICON DIODE
1	.1	.1	70340100	.1MF+-80-20%-50VDC-AXL-T&R	1	IN4744	4744	70440102	IN4003 200V SILICON DIODE CR124, CR125
1	2.2A50NP	2.2A50NP	70320010	2.2MFD 20% 50V NP EL T&R	1	1S8142	1S8142	70400142	CR200
1	100PF	100PF	70340054	100PF+-10%-50VDC-T/C-T&R	5	IN4148	4148	70464148	IN4148 75V 10MA SILICON DIODE CR201, CR202
1	39PF	39PF	70340052	39PF+-50VDC-T/C-T&R	2	IN4744	4744	70440102	CR203
1	22A25	22A25	70320012	22MFD +/-20% 25VDC EL AXL	4	IN4148	4148	70464148	IN4148 75V 10MA SILICON DIODE CR204, CR205, CR206, CR207, CR208
1	2.2A35	2.2A35	70320200	2.2MFD 35VDC LY. CAP T&R	1	1S8142	1S8142	70400142	SE-8731-D-YEL-25MM IDS REC CR219
1	10PF	10PF	70340050	10PF+-5%-T/C-T&R	1	IN4744	4744	70440102	CR220
1	2.2A35	2.2A35	70320200	2.2MFD 35VDC LY. CAP T&R	2	IN4148	4148	70464148	IN4148 75V 10MA SILICON DIODE CR221, CR222
1	.1	.1	70340100	.1MF+-80-20%-50VDC-AXL-T&R	4	H2522	98002522	98002522	3/8" HEATSINK PUNCHED
1	2.2A35	2.2A35	70320200	2.2MFD 35VDC LY. CAP T&R	1	IN4148	4148	70464148	HS1, HS2, HS3, HS4
1	10A16L	10A16L	70320198	10MFD 16V LOW LEAKAGE T&R	1	SEX10	SEX10	XXXXXXX	10 EACH OF STAKE PINS
1	100PF	100PF	70340054	100PF+-10%-50VDC-T/C-T&R	1	SPX4K2	SPX4K2	XXXXXXX	3 EACH OF STAKE PINS
2	.1	.1	70340100	.1MF+-80-20%-50VDC-AXL-T&R	1	SPX10	SPX10	XXXXXXX	P101
1	1000SV50	1000SV50	70320147	1000MF-30/20%-50VDC-EL-R/S	1	SPX10	SPX10	XXXXXXX	10 EACH OF STAKE PINS
1	10PF	10PF	70340050	10PF+-5%-T/C-T&R	1	SPX6K3U	SPX6K3U	XXXXXXX	P200
3	22A25	22A25	70320012	22MFD +/-20% 25VDC EL AXL	1	SPX4	SPX4	XXXXXXX	P201
1	1000SV50	1000SV50	70320147	1000MF-30/20%-50VDC-EL-R/S	1	15033HS	15033HS	70415032	4 EACH OF STAKE PINS
1	.1	.1	70340100	.1MF+-80-20%-50VDC-AXL-T&R	1	15033HS	15033HS	70415033	MJE-15032 NPN HI-VLTG TO-220 DRIVER TRANSISTOR
1	2.2A50NP	2.2A50NP	70320010	2.2MFD 20% 50V NP EL T&R	1	J174	J174	70460174	Q100
1	100PF	100PF	70340054	100PF+-10%-50VDC-T/C-T&R	1	6531	6531	70466531	Q101
1	39PF	39PF	70340052	39PF+-50VDC-T/C-T&R	1	6533	6534	70466533	Q102
1	22A25	22A25	70320012	22MFD +/-20% 25VDC EL AXL	1	15033HS	15033HS	70415033	Q103
1	2.2MFD 35VDC LY. CAP T&R				1	2N4249	4249	70464249	Q104
1	10PF	10PF	70340050	10PF+-5%-T/C-T&R	1	10PF+-5%-T/C-T&R			Q105
1	2.2A35	2.2A35	70320200	2.2MFD 35VDC LY. CAP T&R	1	15032HS	15032HS	70415032	Q200
1	.1	.1	70340100	.1MF+-80-20%-50VDC-AXL-T&R	1	J174	J174	70460174	Q201
1	2.2A35	2.2A35	70320200	2.2MFD 35VDC LY. CAP T&R	1	6531	6531	70466531	Q202
1	10A16L	10A16L	70320198	10MFD 16V LOW LEAKAGE T&R	1	6533	6534	70466533	Q203
1	100PF	100PF	70340054	100PF+-10%-50VDC-T/C-T&R	1	15033HS	15033HS	70415033	Q204
2	.1	.1	70340100	.1MF+-80-20%-50VDC-AXL-T&R	1	2N3919	3919	70463919	Q205
1	1000SV50	1000SV50	70320147	1000MF-30/20%-50VDC-EL-R/S	1	400W5	400W5	70250062	Q206
1	10PF	10PF	70340050	10PF+-5%-T/C-T&R	1	700W5	700W5	70250061	Q207
2	22A25	22A25	70320012	22MFD +/-20% 25VDC EL AXL	1	1.5K	1.5K	70240018	Q208
1	IN4744	4744	70440102	SE-8731-D-YEL-25MM IDS REC	1	1.5K-1/4W-5%-CF-T&R			Q209
2	IN4148	4148	70464148	IN4148 75V 10MA SILICON DIODE	1	18K-1/4W-5%-CF-T&R			Q210
1	1S8142	1S8142	70400142	1S8142 250V SILICON DIODE	1	100-1/4W-5%-CF-T&R			Q211
5	IN4148	4148	70464148	IN4148 75V 10MA SILICON DIODE	1	100-1/4W-5%-CF-T&R			Q212
2	IN4744	4744	70440102	SE-8731-D-YEL-25MM IDS REC	1	100PF-1/4W-5%-FP-T&R			Q213
4	IN4148	4148	70464148	IN4148 75V 10MA SILICON DIODE	1	10K-1/4W-5%-CF-T&R			Q214
1	1S8142	1S8142	70400142	1S8142 250V SILICON DIODE	1	100-1/4W-5%-CF-T&R			Q215
1	IN4744	4744	70440102	SE-8731-D-YEL-25MM IDS REC	1	100PF-1/4W-5%-FP-T&R			Q216
2	IN4148	4148	70464148	IN4148 75V 10MA SILICON DIODE	1	10K-1/4W-5%-CF-T&R			Q217
1	RALEDYL2	LEDYL2		RIGHT ANGLE	1	1M-1/4W-5%-CF-T&R			Q218
1	1000SV50	1000SV50	70320147	1000MF-30/20%-50VDC-EL-R/S	1	1M-1/4W-5%-CF-T&R			Q219
1	10PF	10PF	70340050	10PF+-5%-T/C-T&R	1	1M-1/4W-5%-CF-T&R			Q220
2	22A25	22A25	70320012	22MFD +/-20% 25VDC EL AXL	1	1.5K-1/4W-5%-CF-T&R			Q221
1	IN4744	4744	70440102	SE-8731-D-YEL-25MM IDS REC	1	100-1/4W-5%-CF-T&R			Q222
4	IN4148	4148	70464148	IN4148 75V 10MA SILICON DIODE	1	100-1/4W-5%-CF-T&R			Q223
1	1S8142	1S8142	70400142	1S8142 250V SILICON DIODE	1	100-1/4W-5%-CF-T&R			Q224
1	IN4744	4744	70440102	SE-8731-D-YEL-25MM IDS REC	1	100PF-1/4W-5%-FP-T&R			Q225
2	IN4148	4148	70464148	IN4148 75V 10MA SILICON DIODE	1	10K-1/4W-5%-CF-T&R			Q226
1	RALEDYL2	LEDYL2		RIGHT ANGLE	1	1M-1/4W-5%-CF-T&R			Q227
1	1000SV50	1000SV50	70320147	1000MF-30/20%-50VDC-EL-R/S	1	1M-1/4W-5%-CF-T&R			Q228
1	10PF	10PF	70340050	10PF+-5%-T/C-T&R	1	1M-1/4W-5%-CF-T&R			Q229
2	22A25	22A25	70320012	22MFD +/-20% 25VDC EL AXL	1	1.5K-1/4W-5%-CF-T&R			Q230
1	IN4744	4744	70440102	SE-8731-D-YEL-25MM IDS REC	1	100-1/4W-5%-CF-T&R			Q231
4	IN4148	4148	70464148	IN4148 75V 10MA SILICON DIODE	1	100-1/4W-5%-CF-T&R			Q232
1	1S8142	1S8142	70400142	1S8142 250V SILICON DIODE	1	100-1/4W-5%-CF-T&R			Q233
1	IN4744	4744	70440102	SE-8731-D-YEL-25MM IDS REC	1	100PF-1/4W-5%-FP-T&R			Q234
2	IN4148	4148	70464148	IN4148 75V 10MA SILICON DIODE	1	10K-1/4W-5%-CF-T&R			Q235
1	RALEDYL2	LEDYL2		RIGHT ANGLE	1	1M-1/4W-5%-CF-T&R			Q236
1	1000SV50	1000SV50	70320147	1000MF-30/20%-50VDC-EL-R/S	1	1M-1/4W-5%-CF-T&R			Q237
1	10PF	10PF	70340050	10PF+-5%-T/C-T&R	1	1M-1/4W-5%-CF-T&R			Q238
2	22A25	22A25	70320012	22MFD +/-20% 25VDC EL AXL	1	1.5K-1/4W-5%-CF-T&R			Q239
1	IN4744	4744	70440102	SE-8731-D-YEL-25MM IDS REC	1	100-1/4W-5%-CF-T&R			Q240
4	IN4148	4148	70464148	IN4148 75V 10MA SILICON DIODE	1	100-1/4W-5%-CF-T&R			Q241
1	1S8142	1S8142	70400142	1S8142 250V SILICON DIODE	1	100-1/4W-5%-CF-T&R			Q242
1	IN4744	4744	70440102	SE-8731-D-YEL-25MM IDS REC	1	100PF-1/4W-5%-FP-T&R			Q243
2	IN4148	4148	70464148	IN4148 75V 10MA SILICON DIODE	1	10K-1/4W-5%-CF-T&R			Q244
1	RALEDYL2	LEDYL2		RIGHT ANGLE	1	1M-1/4W-5%-CF-T&R			Q245
1	1000SV50	1000SV50	70320147	1000MF-30/20%-50VDC-EL-R/S	1	1M-1/4W-5%-CF-T&R			Q246
1	10PF	10PF	70340050	10PF+-5%-T/C-T&R	1	1M-1/4W-5%-CF-T&R			Q247
2	22A25	22A25	70320012	22MFD +/-20% 25VDC EL AXL	1	1.5K-1/4W-5%-CF-T&R			Q248
1	IN4744	4744	70440102	SE-8731-D-YEL-25MM IDS REC	1	100-1/4W-5%-CF-T&R			Q249
4	IN4148	4148	70464148	IN4148 75V 10MA SILICON DIODE	1	100-1/4W-5%-CF-T&R			Q250
1	1S8142	1S8142	70400142	1S8142 250V SILICON DIODE	1	100-1/4W-5%-CF-T&R			Q251
1	IN4744	4744	70440102	SE-8731-D-YEL-25MM IDS REC	1	100PF-1/4W-5%-FP-T&R			Q252
2	IN4148	4148	70464148	IN4148 75V 10MA SILICON DIODE	1	10K-1/4W-5%-CF-T&R			Q253
1	RALEDYL2	LEDYL2		RIGHT ANGLE	1	1M-1/4W-5%-CF-T&R			Q254
1	1000SV50	1000SV50	70320147	1000MF-30/20%-50VDC-EL-R/S	1	1M-1/4W-5%-CF-T&R			Q255
1	10PF	10PF	70340050	10PF+-5%-T/C-T&R	1	1M-1/4W-5%-CF-T&R			Q256
2	22A25	22A25	70320012	22MFD +/-20% 25VDC EL AXL	1	1.5K-1/4W-5%-CF-T&R			Q257
1	IN4744	4744	70440102	SE-8731-D-YEL-25MM IDS REC	1	100-1/4W-5%-CF-T&R			Q258
4	IN4148	4148	70464148	IN4148 75V 10MA SILICON DIODE	1	100-1/4W-5%-CF-T&R			Q259
1	1S8142	1S8142	70400142	1S8142 250V SILICON DIODE	1	100-1/4W-5%-CF-T&R			Q260
1	IN4744	4744	70440102	SE-8731-D-YEL-25MM IDS REC	1	100PF-1/4W-5%-FP-T&R			Q261
2	IN4148	4148	70464148	IN4148 75V 10MA SILICON DIODE	1	10K-1/4W-5%-CF-T&R			Q262
1	RALEDYL2	LEDYL2		RIGHT ANGLE	1	1M-1/4W-5%-CF-T&R			Q263
1	1000SV50	1000SV50	70320147	1000MF-30/20%-50VDC-EL-R/S	1	1M-1/4W-5%-CF-T&R			Q264
1	10PF	10PF	70340050	10PF+-5%-T/C-T&R	1	1M-1/4W-5%-CF-T&R			Q265
2	22A25	22A25	70320012	22MFD +/-20% 25VDC EL AXL	1	1.5K-1/4W-5%-CF-T&R			Q266
1	IN4744	4744	70440102	SE-8731-D-YEL-25MM IDS REC	1	100-1/4W-5%-CF-T&R			Q267
4	IN4148	4148	70464148	IN4148 75V 10MA SILICON DIODE	1	100-1/4W-5%-CF-T&R			Q268
1	1S8142	1S8142	70400142	1S8142 250V SILICON DIODE	1	100-1/4W-5%-CF-T&R			Q269
1	IN4744	4744	70440102	SE-8731-D-YEL-25MM IDS REC	1	100PF-1/4W-5%-FP-T&R			Q270
2	IN4148	4148	70464148	IN4148 75V 10MA SILICON DIODE	1	10K-1/4W-5%-CF-T&R			Q271
1	RALEDYL2	LEDYL2		RIGHT ANGLE	1	1M-1/4W-5%-CF-T&R			Q272
1	1000SV50	1000SV50	70320147	1000MF-30/20%-50VDC-EL-R/S	1	1M-1/4W-5%-CF-T&R			Q273
1	10PF	10PF	70340050	10PF+-5%-T/C-T&R	1	1M-1/4W-5%-CF-T&R			Q274
2	22A25	22A25	70320012	22MFD +/-20% 25VDC EL AXL	1	1.5K-1/4W-5%-CF-T&R			Q275
1	IN4744	4744	70440102	SE-8731-D-YEL-25MM IDS REC	1	100-1/4W-5%-CF-T&R			Q276
4	IN4148	4148	70464148	IN4148 75V 10MA SILICON DIODE	1	100-1/4W-5%-CF-T&R			Q277
1	1S8142	1S8142	70400142	1S8142 250V SILICON DIODE	1	100-1/4W-5%-CF-T&R			Q278
1	IN4744	4744	70440102	SE-8731-D-YEL-25MM IDS REC	1	100PF-1/4W-5%-FP-T&R			Q279
2	IN4148	4148	70464148	IN4148 75V 10MA SILICON DIODE	1	10K-1/4W-5%-CF-T&R			Q280
1	RALEDYL2	LEDYL2		RIGHT ANGLE	1	1M-1/4W-5%-CF-T&R			Q281
1	1000SV50	1000SV50	70320147	1000MF-30/20%-50VDC-EL-R/S	1	1M-1/4W-5%-CF-T&R			Q282
1	10PF	10PF	70340050	10PF+-5%-T/C-T&R	1	1M-1/4W-5%-CF-T&R			Q283
2	22A25	22A25	70320012	22MFD +/-20% 25VDC EL AXL	1	1.5K-1/4W-5%-CF-T&R			Q284
1	IN4744	4744	70440102	SE-8731-D-YEL-25MM IDS REC	1	100-1/4W-5%-CF-T&R			



PV4C OUTPUT

98871781



NOTICE: THIS CIRCUITRY IS PROTECTED BY U.S. PATENT 3,815,023. ANY REPRODUCTION OR USE OF THIS CIRCUITRY WITHOUT EXPRESS WRITTEN PERMISSION FROM PEAVEY ELECTRONICS CORP. WILL BE PROSECUTED TO THE FULLEST EXTENT ALLOWED UNDER U.S. PATENT LAWS.

#81502381

PEAVEY ELECTRONICS CORP.

711 A STREET

MERIDIAN, MISSISSIPPI 39301

TITLE

PV4C INPUT BOARD

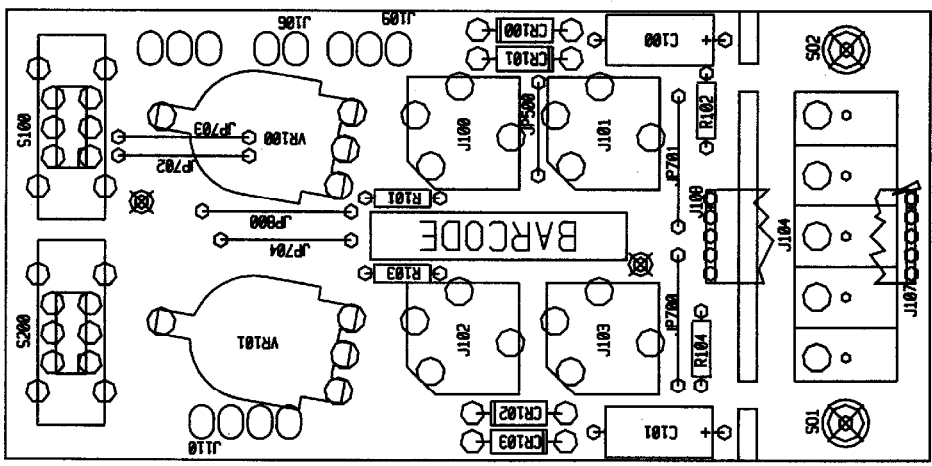
SIZE CODE NUMBER REV

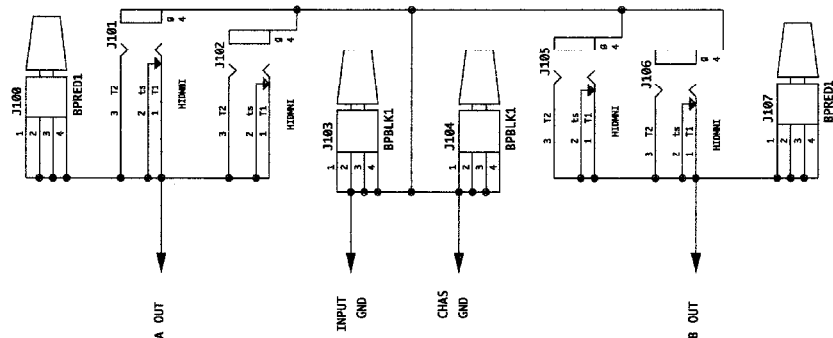
B 8 98871751 A

DATE 23-JAN-93 SHEET 1 OF 1

BOARD NAME: PVACTP8
ASSEMBLY LEVEL NUMBER: 99371751

QTY.	PART NUMBER	DESCRIPTION AND DEVICE DESIGNATIONS
2	70320010	2.2MFD 20% 50V NP EL T&R
4	70465393	1N5393-RL 200V, 1.5, 5% DIODE -T&R
4	71466215	2 TIP H/D JACK TNSU W/SPD
1	70900845	SINGLE ROW 5 POS STRIP WITHOUT EARS
1	XXXXXXX	5 EACH OF STAKE PINS
2	70600037	5C PRE-TIN .100 3* JNPR
1	XXXXSPX3	3 EACH OF STAKE PINS
1	XXXXXXX	4 EACH OF STAKE PINS
4	70240017	1K-1/4W-5% -CF-T&R
2	71322264	R101, R102, R103, R104
2	70900788	SLIDE SWITCH PC MOUNT
2	71190335	S100, S200
		SPACER, 1/8, R(#4), .187 SWAGE ALUM.
		S01, S02
		50K LIN METRIC SPIDER 1MM
		VR100, VR101

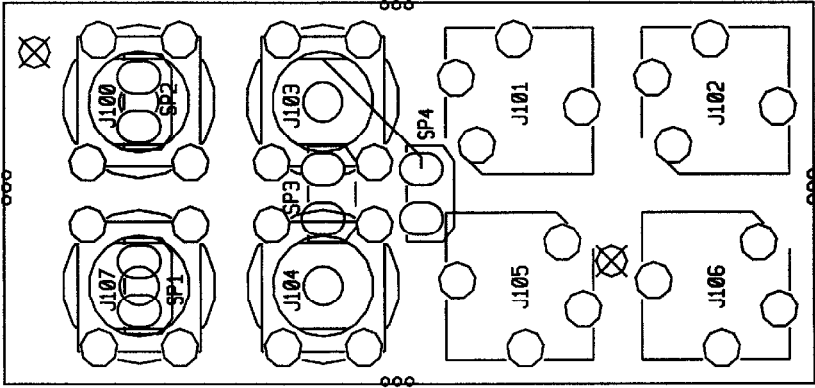




NOTICE: THIS CIRCUITRY IS PROTECTED BY U.S. PATENT
#81502381. ANY REPRODUCTION OR USE OF THIS
CIRCUITRY WITHOUT EXPRESS WRITTEN AUTHORITY
FROM PEAVEY IS STRICTLY FORBIDDEN AND VIOLATORS
WILL BE PROSECUTED TO THE FULLEST EXTENT ALLOWED
UNDER U.S. PATENT LAWS.

#81502381

PEAVEY ELECTRONICS CORP. 711 A STREET MERIDIAN, MISSISSIPPI 39301					
TITLE PV4C JACK BOARD					
SIZE B	CODE B	NUMBER 98871840	REV A		
DATE 16-JUN-92	SHEET 2		1 OF 1		

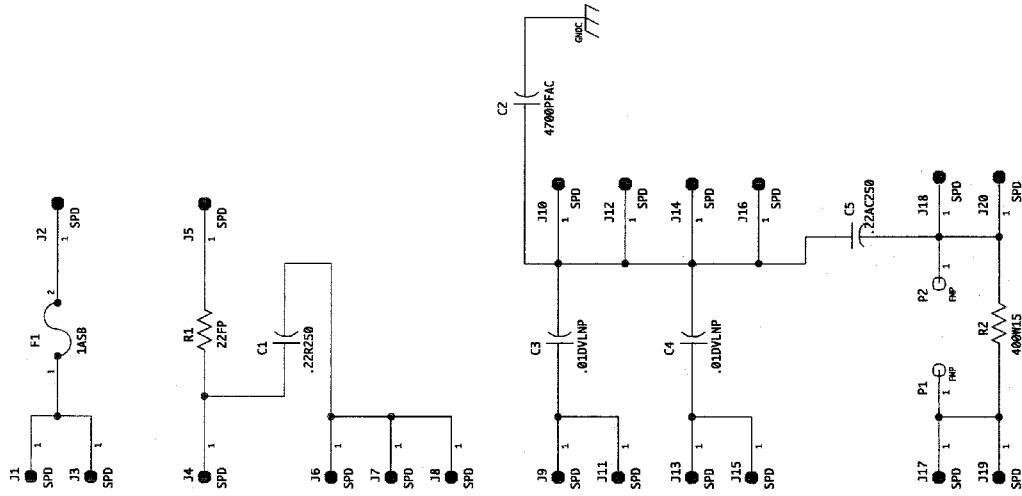


PV4C JACK
98871840

BOARD NAME: PV4CJACK			
ASSEMBLY LEVEL NUMBER: 99371840			

** QTY.	PART	DESCRIPTION AND	*****
	NUMBER	DEVICE DESIGNATIONS	
1	71466201	BINDING POST PC RED-90	
2	71466214	2 TIP HID JACK NINS W/SPD	
2	71466200	BINDING POST PC BLK-90	
2	71466214	2 TIP HID JACK NINS W/SPD	
1	71466201	BINDING POST PC RED-90	
2	70600005	22GA JUMPER WIRES T&R	
4	73716194	.250 PC MNT SPADE .093 PCB	
		SP1, SP2, SP3, SP4	

LAST REF USED: C5 F1 J20 P2 R2 S04



NOTICE: THIS CIRCUITRY IS PROTECTED BY U.S. PATENT NO. 4,338,083 OWNED BY PEAVEY ELECTRONICS CORP. USE OR COPYING WITHOUT EXPRESS WRITTEN AUTHORITY FROM PEAVEY IS STRICTLY FORBIDDEN AND VIOLATORS WILL BE PROSECUTED TO THE FULLEST EXTENT ALLOWED UNDER U.S. PATENT LAWS.

N/C	S01	1	250KΩ
N/C	S02	1	250KΩ
N/C	S03	1	250KΩ
N/C	S04	1	250KΩ

#81502381

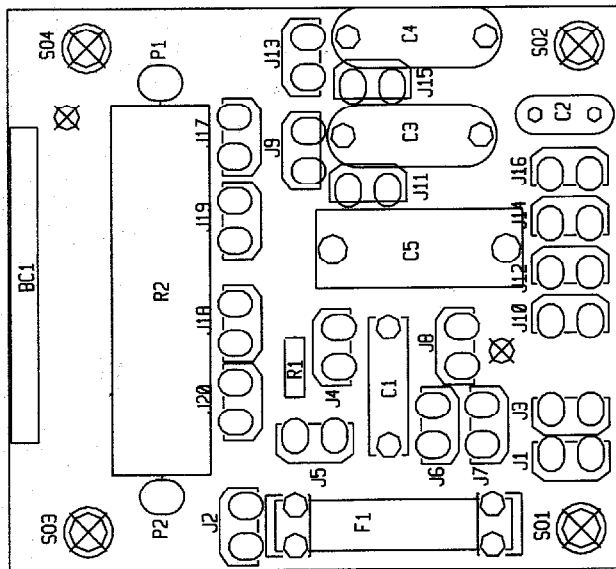
PEAVEY ELECTRONICS CORP.
711 A STREET
MERIDIAN, MISSISSIPPI 39301

TITLE

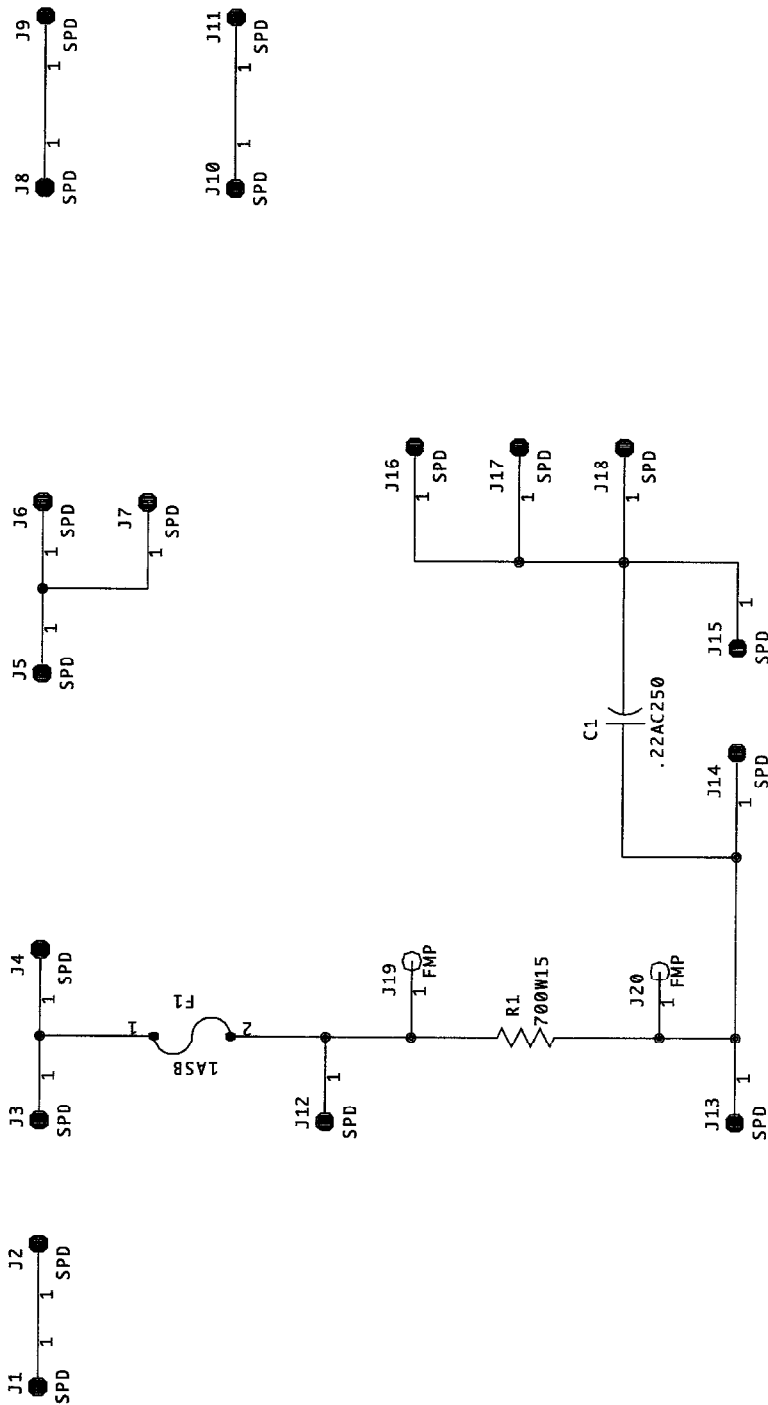
PVAC AC BOARD 120V

SIZE	CODE	NUMBER	REV
B		98871770	A
DATE	19-OCT-92	SHEET	1 OF 1

BOARD NAME: EVACAL20
 ASSEMBLY LEVEL NUMBER: 99371770



QTY.	PART NUMBER	DESCRIPTION AND DEVICE DESIGNATIONS
1	70320129	.22MFD 10% 250V MY R/W C1
1	70320114	4700PF 400VAC EXP LINE CAP X C2
2	70320104	.01 MFD 125VDC DVL MYLAR +0-20% C3, C4
1	70320161	.22 mfd 20% 250vac my r/a C5
1	70900379	1 AMP S/B FUSE WITH 2 FUSECLIPS #70900616 F1
20	73716194	.250 PC MNT SPADE .093 PCB J1, J2, J3, J4, J5, J6, J7, J8, J9, J10, J11, J12, J13, J14, J15, J16, J17, J18, J19, J20
2	73711811	ML18-171 C.B. FEMALE MOLEX PIN P1, P2
1	70240100	22PF-1/4W-5%-PF- R1
1	70250013	400-15W-10%-WW-AXL R2
4	70900785	SPACER, 1/4,R(#4),.187 SWAGE ALUM. S01, S02, S03, S04



NOTICE: THIS CIRCUITRY IS PROTECTED BY U.S. PATENT NO. # 4,318,053 OWNED BY PEAVEY ELECTRONICS CORP. USE OR COPYING WITHOUT EXPRESS WRITTEN AUTHORITY FROM PEAVEY IS STRICTLY FORBIDDEN AND VIOLATORS WILL BE PROSECUTED TO THE FULLEST EXTENT ALLOWED UNDER U.S. PATENT LAWS.

- N/C S01 250SOW
- N/C S02 250SOW
- N/C S03 250SOW
- N/C S04 250SOW

PEAVEY ELECTRONICS, CORP.

711 'A' STREET
MERIDIAN, MISSISSIPPI 39301

TITLE

PV4C AC BD 230V

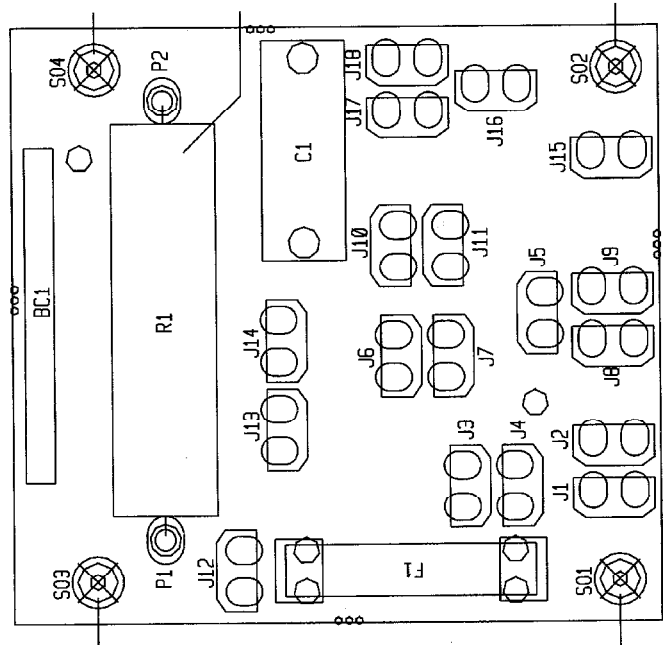
#81502381

SIZE CODE NUMBER REV

A PRINT 98871820 A

DATE 29-OCT-92 SHEET 1 OF 1

BOARD NAME: PV4C 230V AC				
ASSEMBLY LEVEL NUMBER: 99571820				
PART	VALUE	PART	DESCRIPTION AND	
* QTY. NAME	VALUE	NUMBER	DEVICE DESIGNATIONS	*****
*****	*****	*****	*****	*****
1	.22AC250	.22AC250	70320161	.22 mfd 20% 250vac my r/a
				C1
1	1ASB	1ASB	70900379	1 AMP S/B FUSE WITH 2 FUSECLIPS #70500816
				F1
18	SPD	73716194	73716194	.250 PC MNT SPADE .093 PCB
				J1, J2, J3, J4, J5, J6, J7, J8, J9, J10,
				J11, J12, J13, J14, J15, J16, J17, J18
2	FMP	FMP	73711811	M18-171 C.B. FEMALE MOLEX PIN
				P1, P2
1	700W15	700W15	70250037	700-15W-108-WW-AXL
				R1
4	250SOW	70900785	70900785	SPACER, 1/4,R(#4),.187 SWAGE ALUM.
				S01, S02, S03, S04



PV4C 230V AC (EXPOR)
99871820

1

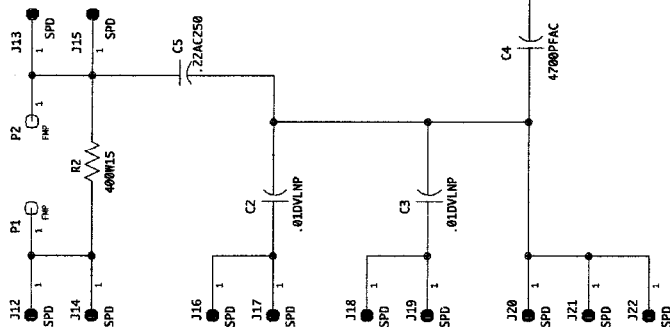


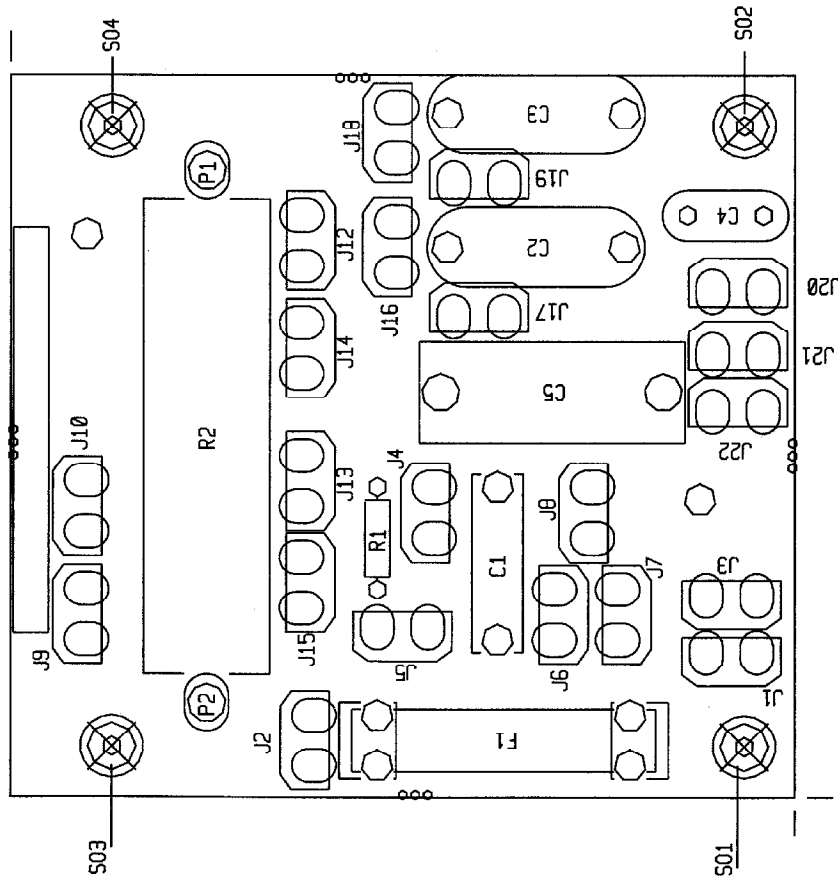
Figure 1 is a schematic diagram of the test setup. It shows four vertical signal paths labeled S01, S02, S03, and S04. Each path has a '1' at the top and a '250SOW' label at the bottom. The paths are connected to a common ground labeled 'GNDC'. The connections are labeled 'N/C' (Not Connected) for S01, S03, and S04, and 'GNDC' for S02.

#81502381

PEAVEY ELECTRONICS CORP. 711 A STREET MERIDIAN, MISSISSIPPI 39301		TITLE PV4C AC BOARD 100V	
SIZE B	CODE	NUMBER 98871830	REV A
DATE 19-CT-92	SHEET 2		OF 1

BOARD NAME: PV4C AC 100V
ASSEMBLY LEVEL NUMBER: 99371830

PART		PART		DESCRIPTION AND	
QTY.	NAME	VALUE	NUMBER	DEVICE DESIGNATIONS	*****
1	.22R250	.22R250	70320129	.22MFD 10% 250V MY R/W	*****
2	.01EVLNP	.01DVLNP	70320104	.01 MFD 125VDC DVL MYLAR +0-20%	C1
1	4700PFAC	4700PFAC	70320114	C2, C3	
1	.22AC250	.22AC250	70320161	4700PF 400VAC EXP LINE CAP X	C4
1	1ASB	1ASB	70900379	.22 mfd 20% 250vac my r/a	C5
21	SPD	73716194	73716194	1 AMP S/B FUSE WITH 2 FUSECLIPS #70900283	F1
2	FMP	FMP	73711811	.230 PC MNT SPADE .093 PCB	J1, J2, J3, J4, J5, J6, J7, J8, J9, J10, J12, J13, J14, J15, J16, J17, J18, J19, J20, J21, J22
1	22FP	22FP	70240100	ML18-171 C.B. FEMALE MOLEX PIN	P1, P2
1	400W15	400W15	70250013	22FP-1/4W-58---FP---	R1
4	250SOW	70900785	70900785	40J-15W-10%-WW-AXL	R2
				SPACER, 1/4, R(#4), .187 SWAGE ALUM.	S01, S02, S03, S04



PV4C 100V AC

99371830