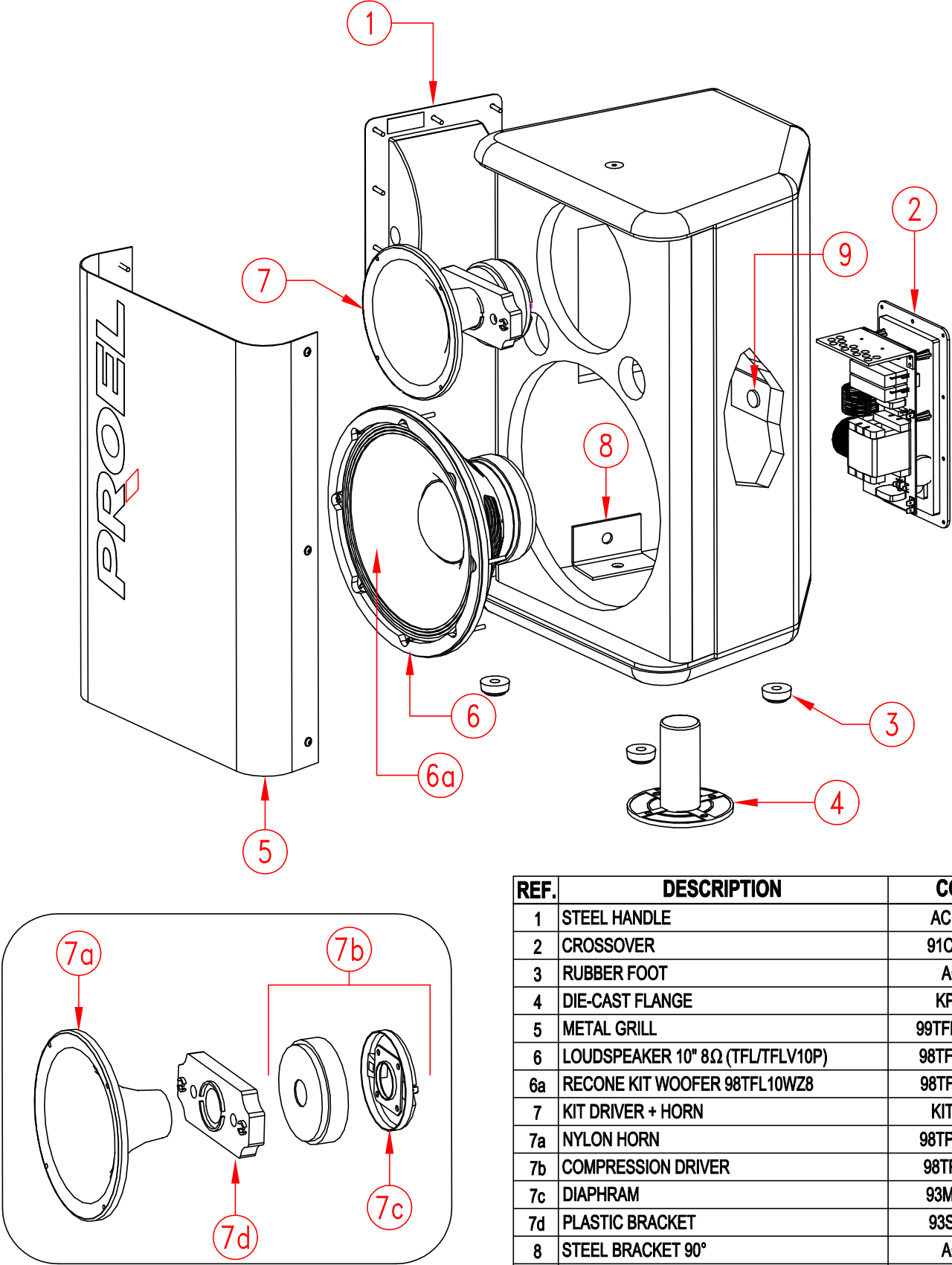


MOD.
TFL10P
TFLV10P

PROEL
SPARE PARTS

REV. 01
DEL 01/2002



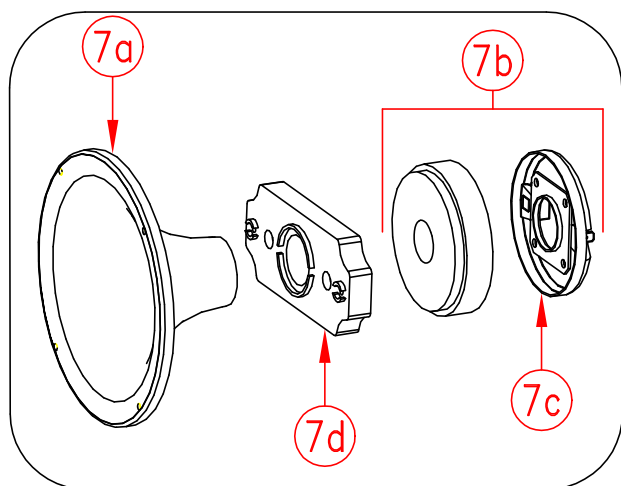
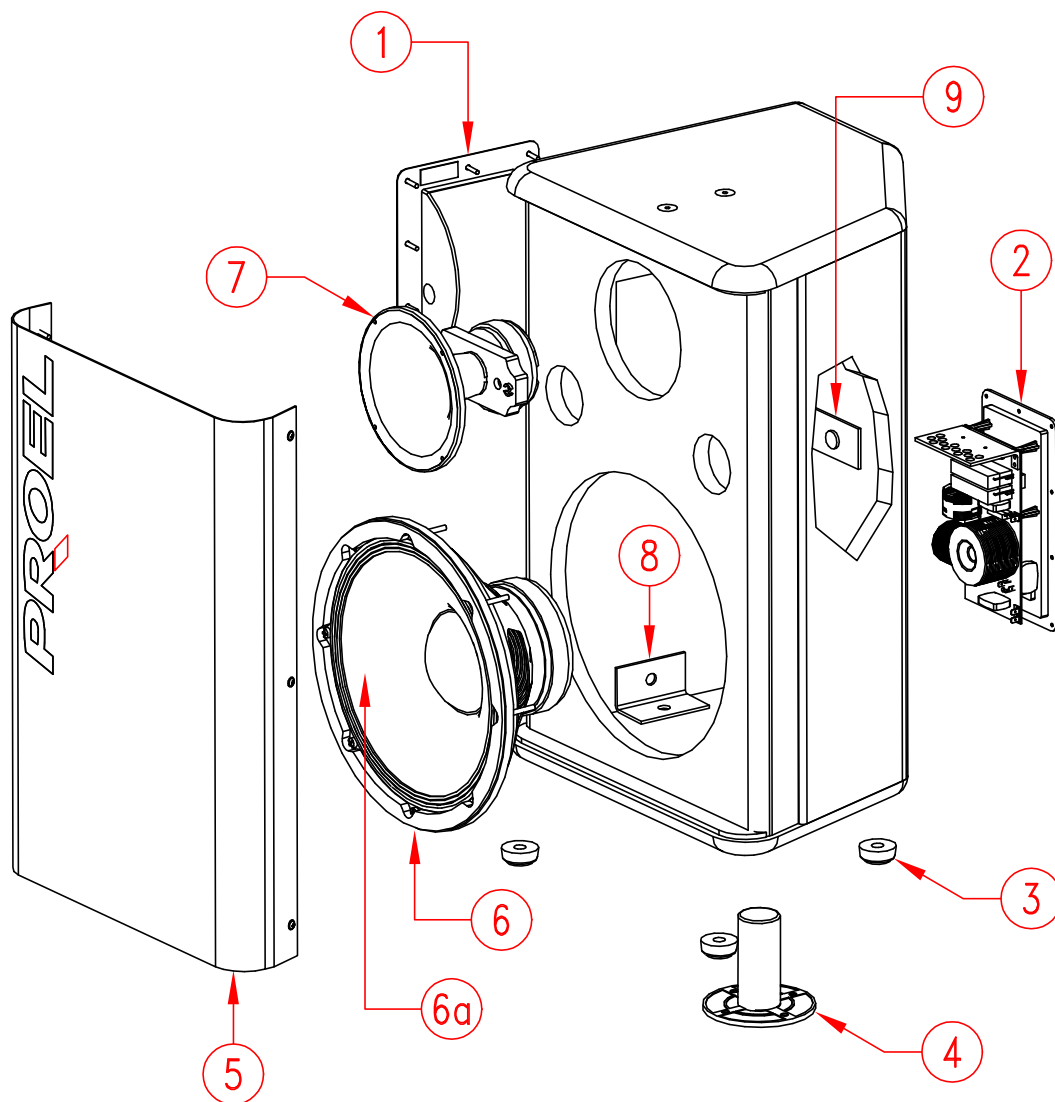
| REF. | DESCRIPTION | CODE |
|------|----------------------------------|-------------|
| 1 | STEEL HANDLE | AC115DN |
| 2 | CROSSOVER | 91CRO015 |
| 3 | RUBBER FOOT | AC166 |
| 4 | DIE-CAST FLANGE | KP305N |
| 5 | METAL GRILL | 99TFLRT10S1 |
| 6 | LOUDSPEAKER 10" 8Ω (TFL/TFLV10P) | 98TFL10WZ8 |
| 6a | RECONE KIT WOOFER 98TFL10WZ8 | 98TFLRK108 |
| 7 | KIT DRIVER + HORN | KITDRI06 |
| 7a | NYLON HORN | 98TPRSWG3 |
| 7b | COMPRESSION DRIVER | 98TPRD128 |
| 7c | DIAPHRAM | 93MBND12 |
| 7d | PLASTIC BRACKET | 93STFDRI |
| 8 | STEEL BRACKET 90° | AC170 |
| 9 | STEEL BRACKET | AC170A |

MOD.
TFL12P4/P8
TFLV12P4/P8

PROEL

SPARE PARTS

REV. 01
DEL 01/2002

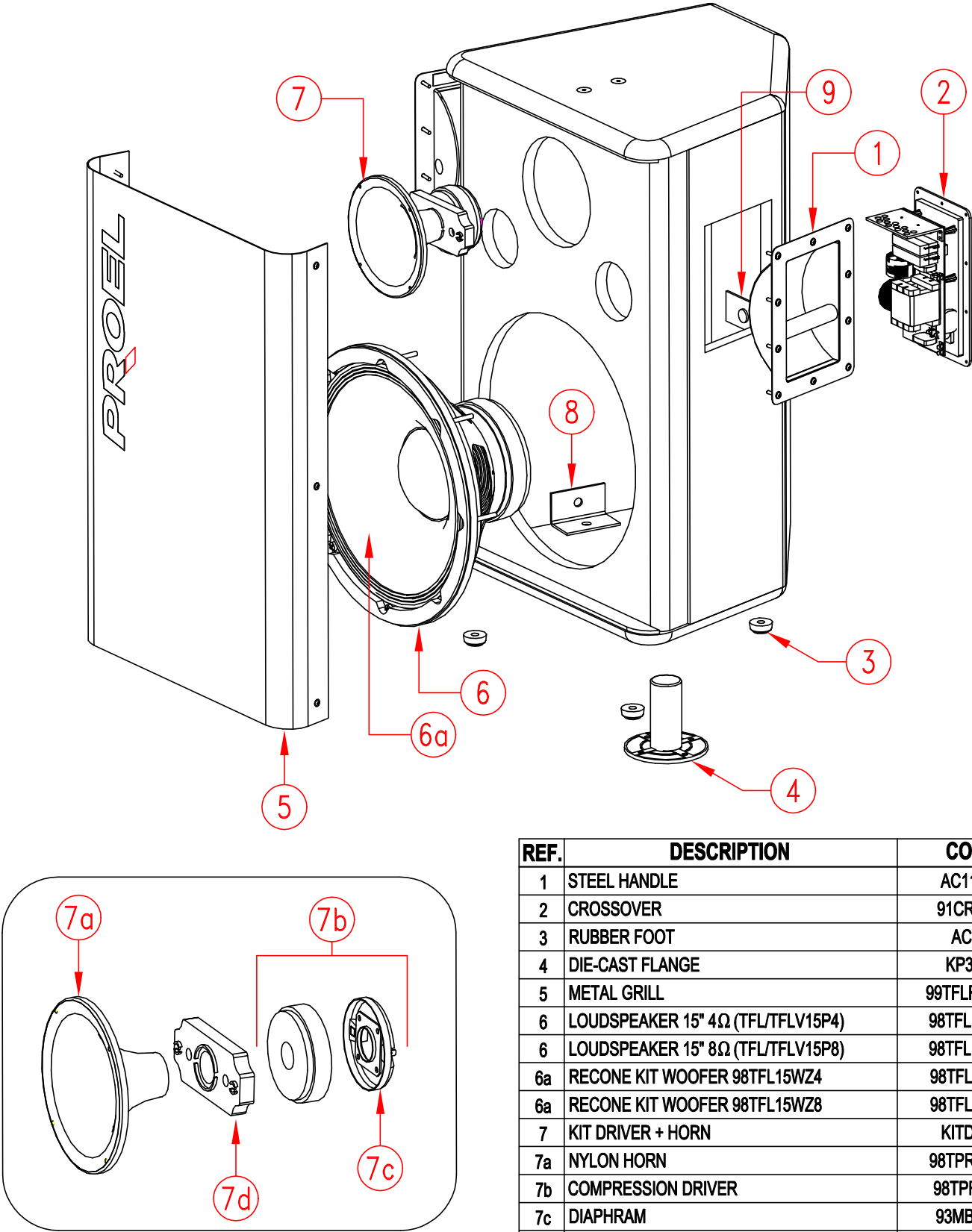


| REF. | DESCRIPTION | CODE |
|------|-----------------------------------|-------------|
| 1 | STEEL HANDLE | AC115DN |
| 2 | CROSSOVER | 91CRO015 |
| 3 | RUBBER FOOT | AC166 |
| 4 | DIE-CAST FLANGE | KP305N |
| 5 | METAL GRILL | 99TFLRT12S1 |
| 6 | LOUDSPEAKER 12" 4Ω (TFL/TFLV12P4) | 98TFL12WZ4 |
| 6 | LOUDSPEAKER 12" 8Ω (TFL/TFLV12P8) | 98TFL12WZ8 |
| 6a | RECONE KIT WOOFER 98TFL12WZ4 | 98TFLRK124 |
| 6a | RECONE KIT WOOFER 98TFL12WZ8 | 98TFLRK128 |
| 7 | KIT DRIVER + HORN | KITDRI06 |
| 7a | NYLON HORN | 98TPRSWG3 |
| 7b | COMPRESSION DRIVER | 98TPRD128 |
| 7c | DIAPHRAM | 93MBND12 |
| 7d | PLASTIC BRACKET | 93STFDRI |
| 8 | STEEL BRACKET 90° | AC170 |
| 9 | STEEL BRACKET | AC170A |

MOD.
TFL15P4/P8
TFLV15P4/P8

PROEL
SPARE PARTS

REV. 01
DEL 01/2002

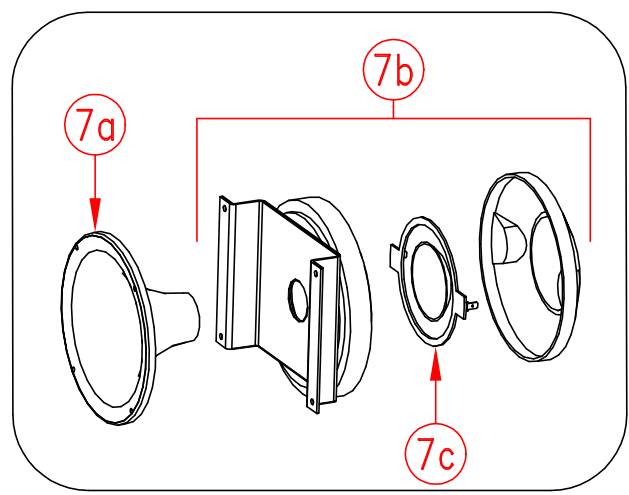
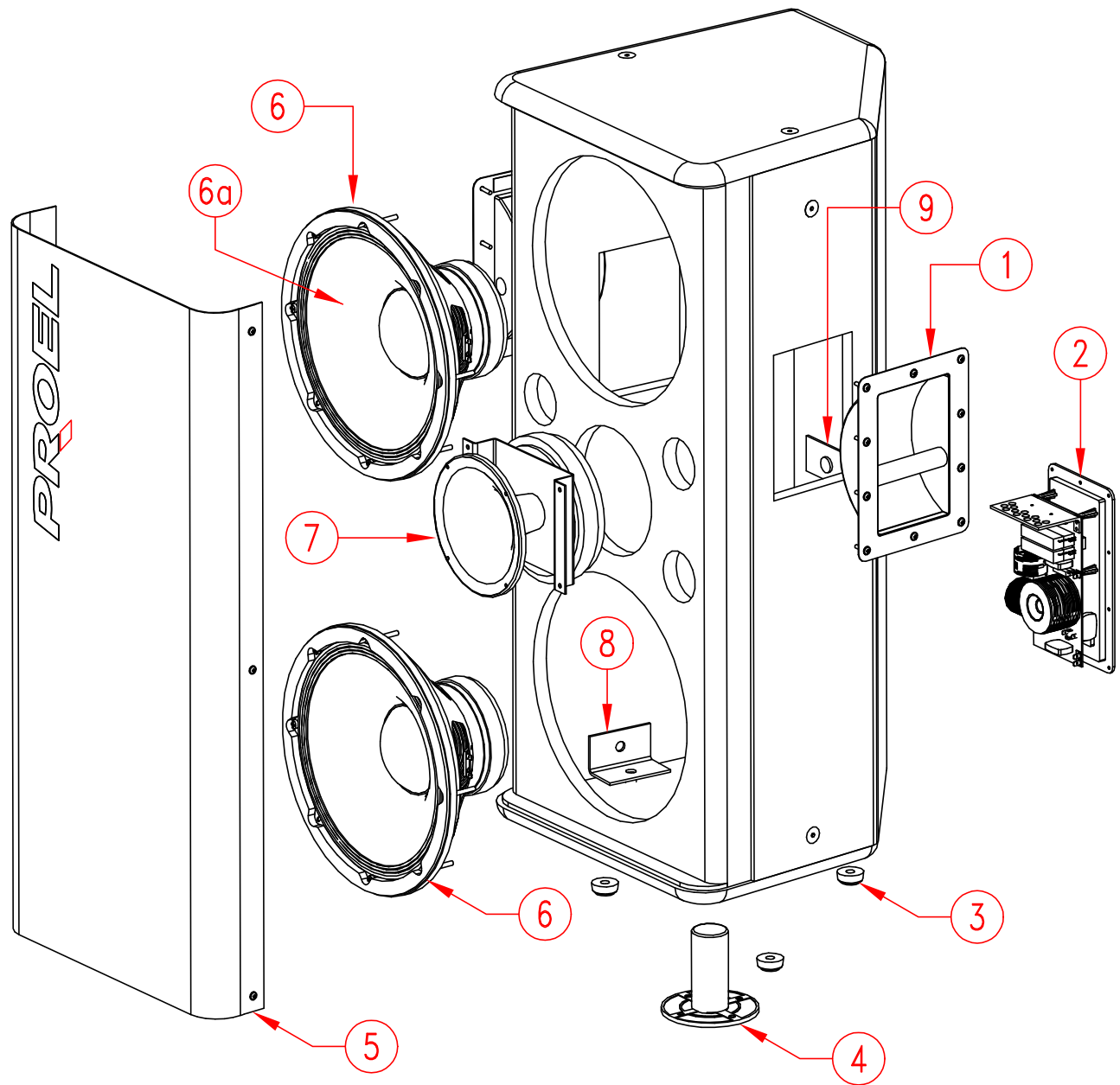


| REF. | DESCRIPTION | CODE |
|------|-----------------------------------|-------------|
| 1 | STEEL HANDLE | AC115DN |
| 2 | CROSSOVER | 91CRO016 |
| 3 | RUBBER FOOT | AC166 |
| 4 | DIE-CAST FLANGE | KP305N |
| 5 | METAL GRILL | 99TFLRT15S1 |
| 6 | LOUDSPEAKER 15" 4Ω (TFL/TFLV15P4) | 98TFL15WZ4 |
| 6 | LOUDSPEAKER 15" 8Ω (TFL/TFLV15P8) | 98TFL15WZ8 |
| 6a | RECONC KIT WOOFER 98TFL15WZ4 | 98TFLRK154 |
| 6a | RECONC KIT WOOFER 98TFL15WZ8 | 98TFLRK158 |
| 7 | KIT DRIVER + HORN | KITDRI06 |
| 7a | NYLON HORN | 98TPRSWG3 |
| 7b | COMPRESSION DRIVER | 98TPRD128 |
| 7c | DIAPHRAM | 93MBND12 |
| 7d | PLASTIC BRACKET | 93STFDRI |
| 8 | STEEL BRACKET 90° | AC170 |
| 9 | STEEL BRACKET | AC170A |

MOD.
TFL212P4/P8
TFLV212P4/P8

PROEL
SPARE PARTS

REV. 01
DEL 01/2002



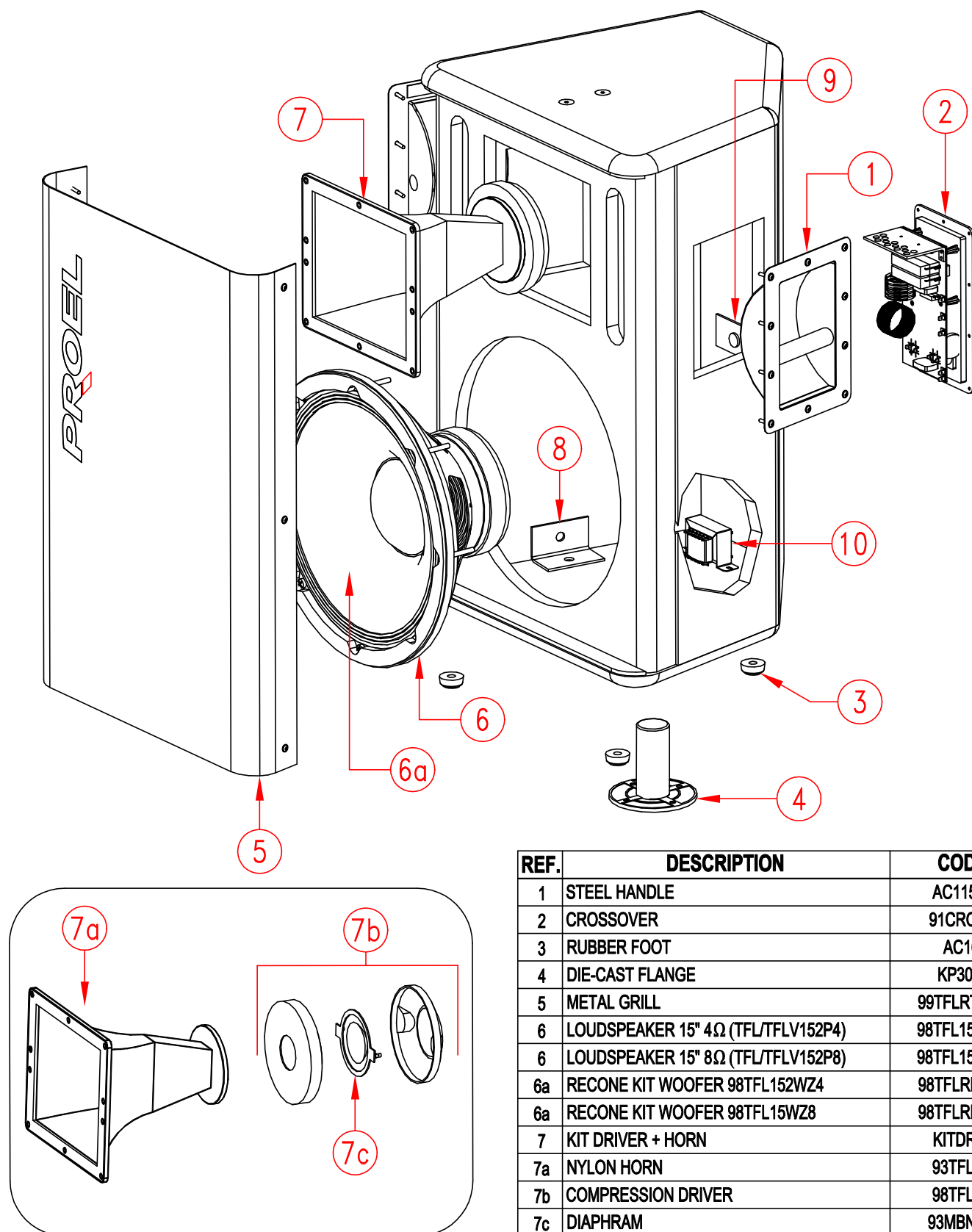
| REF. | DESCRIPTION | CODE |
|------|------------------------------------|--------------|
| 1 | STEEL HANDLE | AC115DN |
| 2 | CROSSOVER | 91CRO017 |
| 3 | RUBBER FOOT | AC166 |
| 4 | DIE-CAST FLANGE | KP305N |
| 5 | METAL GRILL | 99TFLRT212S1 |
| 6 | LOUDSPEAKER 12" 8Ω (TFL/TFLV212P4) | 98TFL22WZ8 |
| 6 | LOUDSPEAKER 12" 4Ω (TFL/TFLV212P8) | 98TFL22WZ4 |
| 6a | RECONE KIT WOOFER 98TFL22WZ8 | 98TFLRK2124 |
| 6a | RECONE KIT WOOFER 98TFL22WZ4 | 98TFLRK2128 |
| 7 | KIT DRIVER + HORN | KITDRI07 |
| 7a | NYLON HORN | 98TPRSWG3 |
| 7b | COMPRESSION DRIVER | 98TFL212 |
| 7c | DIAPHRAM | 93MBND72 |
| 8 | STEEL BRACKET 90° | AC170 |
| 9 | STEEL BRACKET | AC170A |

MOD.
TFL152P4/P8
TFLV152P4/P8

PROEL

SPARE PARTS

REV. 01
DEL 01/2002



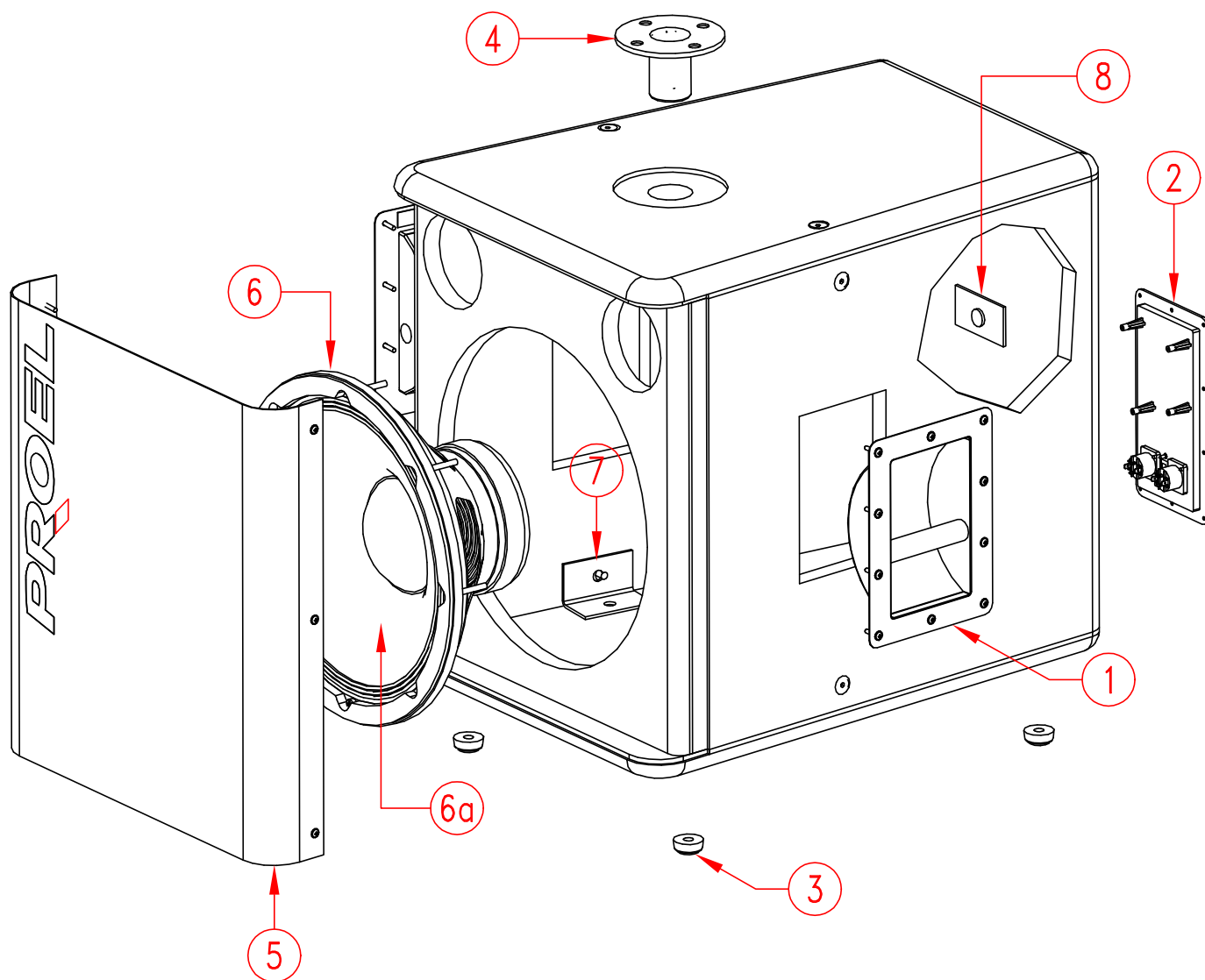
| REF. | DESCRIPTION | CODE |
|------|------------------------------------|-------------|
| 1 | STEEL HANDLE | AC115DN |
| 2 | CROSSOVER | 91CRO022 |
| 3 | RUBBER FOOT | AC166 |
| 4 | DIE-CAST FLANGE | KP305N |
| 5 | METAL GRILL | 99TFLRT152S |
| 6 | LOUDSPEAKER 15" 4Ω (TFL/TFLV152P4) | 98TFL152WZ4 |
| 6 | LOUDSPEAKER 15" 8Ω (TFL/TFLV152P8) | 98TFL152WZ8 |
| 6a | RECONE KIT WOOFER 98TFL152WZ4 | 98TFLRK1524 |
| 6a | RECONE KIT WOOFER 98TFL15WZ8 | 98TFLRK1528 |
| 7 | KIT DRIVER + HORN | KITDRI08 |
| 7a | NYLON HORN | 93TFL152 |
| 7b | COMPRESSION DRIVER | 98TFL152 |
| 7c | DIAPHRAM | 93MBND76 |
| 8 | STEEL BRACKET 90° | AC170 |
| 9 | STEEL BRACKET | AC170A |
| 10 | INDUCTOR | 91BBN022 |

MOD.
TFL115SP4/SP8
TFLV115SP4/SP8

PROEL

SPARE PARTS

REV. 01
DEL 01/2002



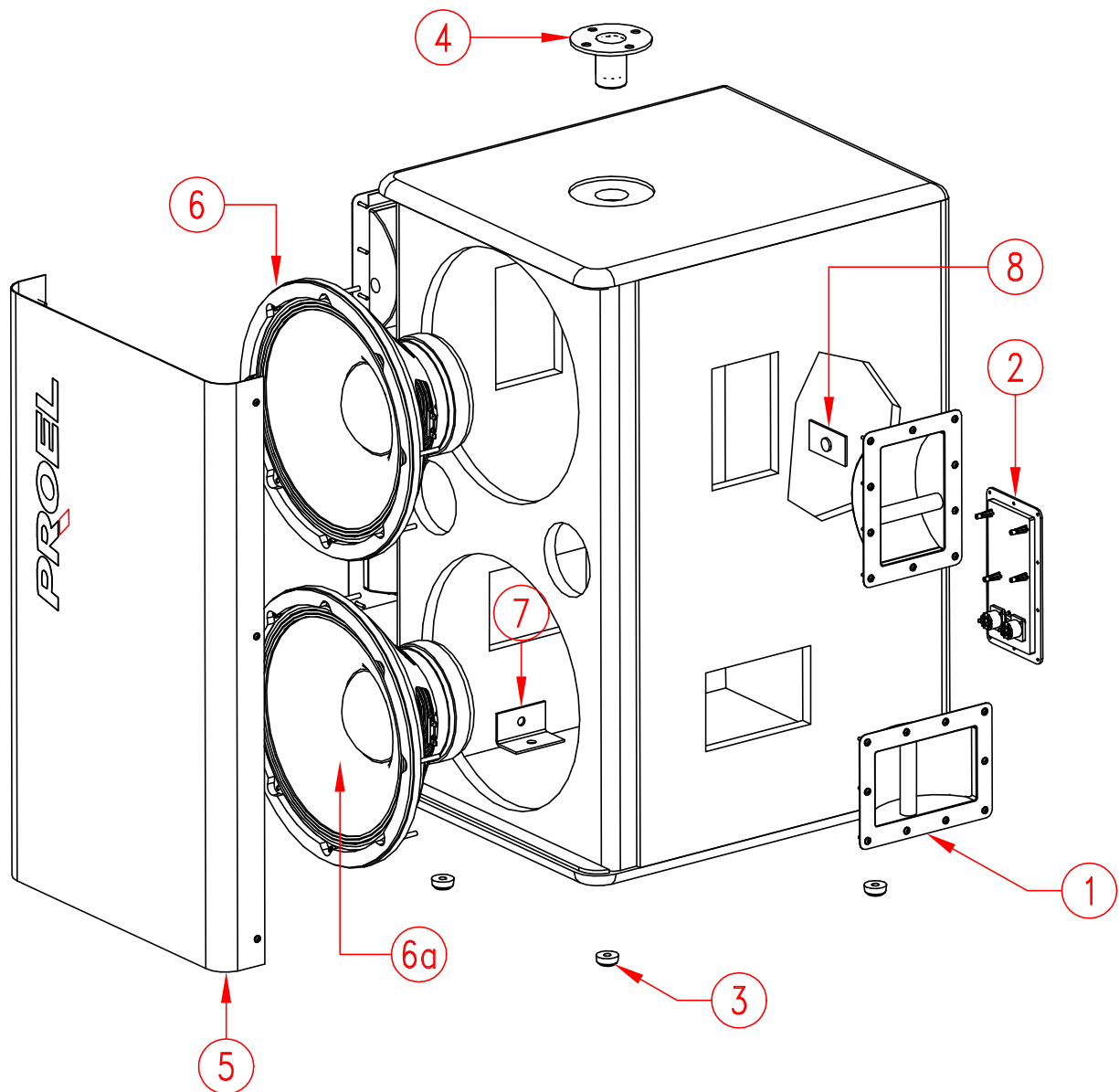
| REF. | DESCRIPTION | CODE |
|------|-------------------------------------|---------------|
| 1 | STEEL HANDLE | AC115DN |
| 2 | CONNECTION PANEL | KITCONF3 |
| 3 | RUBBER FOOT | AC166 |
| 4 | DIE-CAST FLANGE | KP305N |
| 5 | METAL GRILL | 99TFLRT115SS1 |
| 6 | LOUDSPEAKER 15" 4Ω (TFL/TFLV115SP4) | 98TFL115WZ4 |
| 6 | LOUDSPEAKER 15" 8Ω (TFL/TFLV115SP8) | 98TFL115WZ8 |
| 6a | RECONE KIT WOOFER 98TFL115WZ4 | 98TFLRK1154 |
| 6a | RECONE KIT WOOFER 98TFL115WZ8 | 98TFLRK1158 |
| 7 | STEEL BRACKET 90° | AC170 |
| 8 | STEEL BRACKET | AC170A |

MOD.
TFL215SP4/SP8
TFLV215SP4/SP8

PROEL

SPARE PARTS

REV. 01
DEL 01/2002



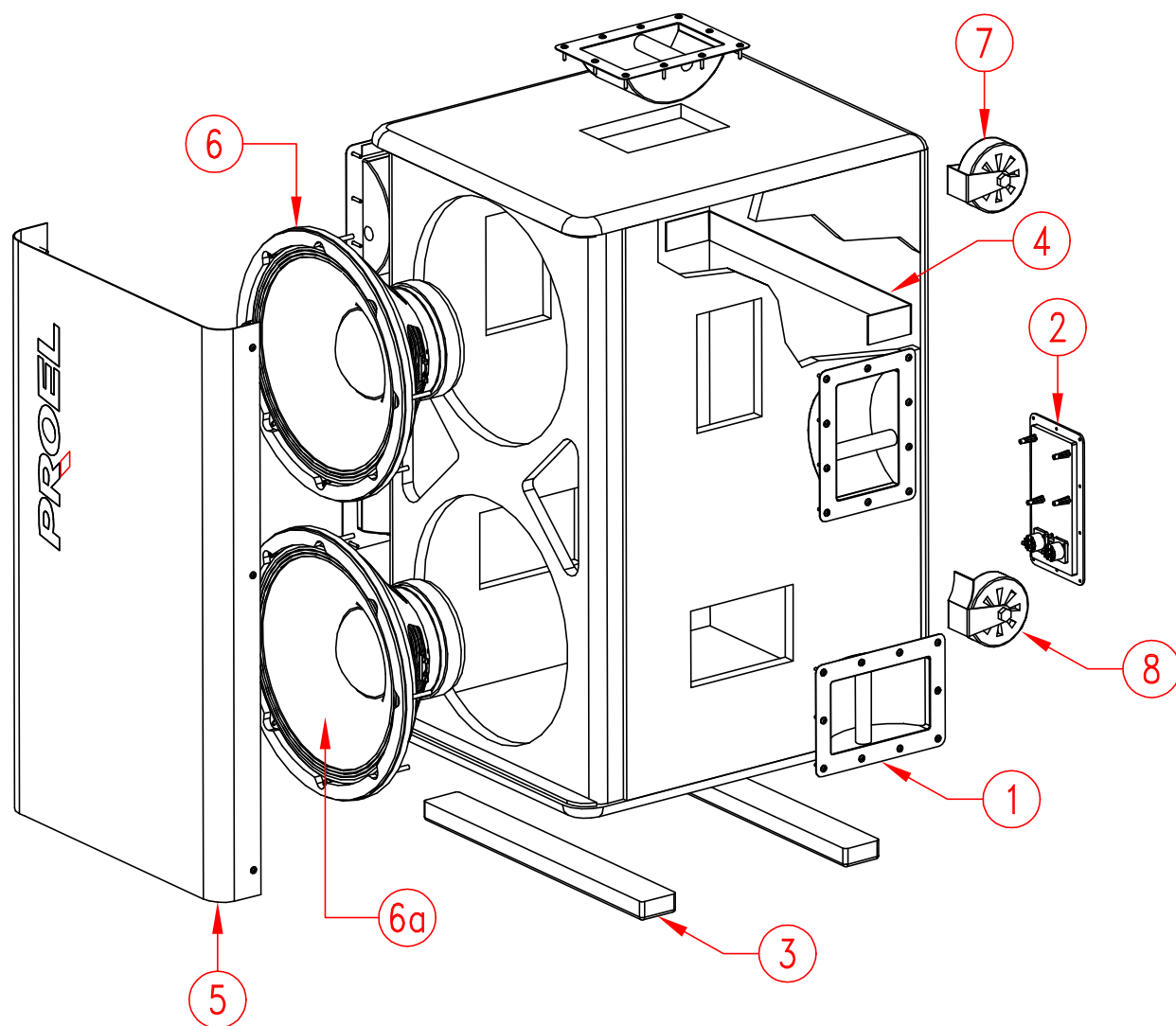
| REF. | DESCRIPTION | CODE |
|------|-------------------------------------|---------------|
| 1 | STEEL HANDLE | AC115DN |
| 2 | CONNECTION PANEL (TFL/TFLV215SP4) | KITCONF1 |
| 2 | CONNECTION PANEL (TFL/TFLV215SP8) | KITCONF2 |
| 3 | RUBBER FOOT | AC166 |
| 4 | DIE-CAST FLANGE | KP305N |
| 5 | METAL GRILL | 99TFLRT215SS1 |
| 6 | LOUDSPEAKER 15" 4Ω (TFL/TFLV215SP4) | 98TFL115WZ8 |
| 6 | LOUDSPEAKER 15" 8Ω (TFL/TFLV215SP8) | 98TFL115WZ4 |
| 6a | RECONE KIT WOOFER 98TFL115WZ8 | 98TFLRK1158 |
| 6a | RECONE KIT WOOFER 98TFL115WZ4 | 98TFLRK1154 |
| 7 | STEEL BRACKET 90° | AC170 |
| 8 | STEEL BRACKET | AC170A |

MOD.
TFL218SP4/SP8
TFLV218SP4/SP8

PROEL

SPARE PARTS

REV. 01
DEL 01/2002



| REF. | DESCRIPTION | CODE |
|------|-------------------------------------|--------------|
| 1 | STEEL HANDLE | AC115DN |
| 2 | CONNECTION PANEL (TFL/TFLV218SP4) | KITCONF4 |
| 2 | CONNECTION PANEL (TFL/TFLV218SP8) | KITCONF5 |
| 3 | WOODEN FOOT | AC166L |
| 4 | STEEL BRACKET | AC170B |
| 5 | METAL GRILL | 99TFLRT18SS1 |
| 6 | LOUDSPEAKER 18" 8Ω (TFL/TFLV218SP4) | 98TFL18WZ8 |
| 6 | LOUDSPEAKER 18" 4Ω (TFL/TFLV218SP8) | 98TFL18WZ4 |
| 6a | RECON KIT WOOFER 98TFL18WZ8 | 98TFLRK2188 |
| 6a | RECON KIT WOOFER 98TFL18WZ4 | 98TFLRK2184 |
| 7 | CASTOR | AC102G |
| 8 | CASTOR WITH BRAKE | AC102F |