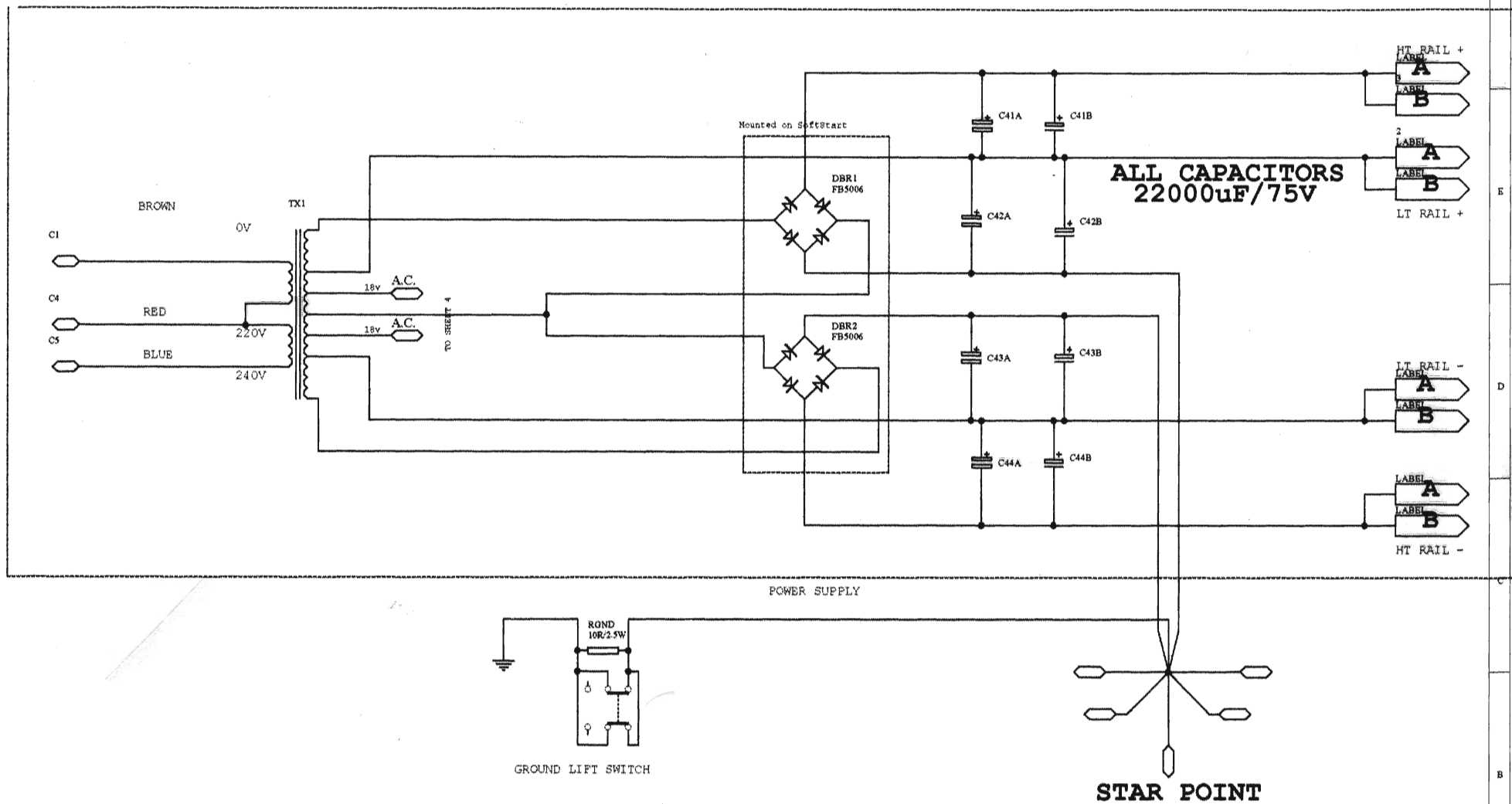


SHEET 2

DRAWING SYMBOLS CHANNEL A OUTPUT STAGE
 CHANNEL B LOW RANGE COMPONENT NUMBERS
 BUT WITH THE SUFFIX 8

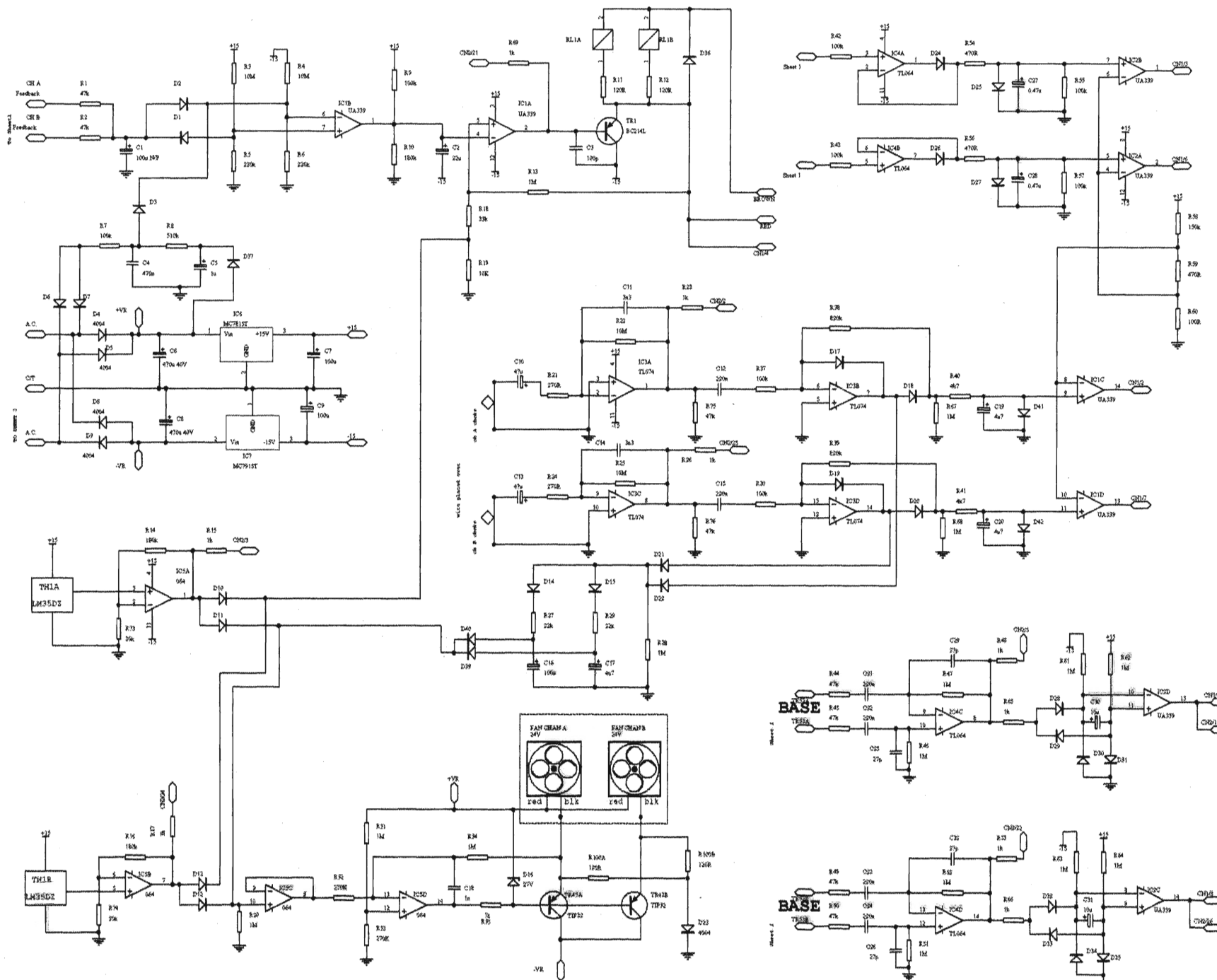
SRX3801 OUTPUT STAGE			
Size	Number	Revision	
A3	C1067		
Date	1-25-1999	Drawn by	
File	D:\PROJ\SRX3801\SRX3801.DWG	Checked by	

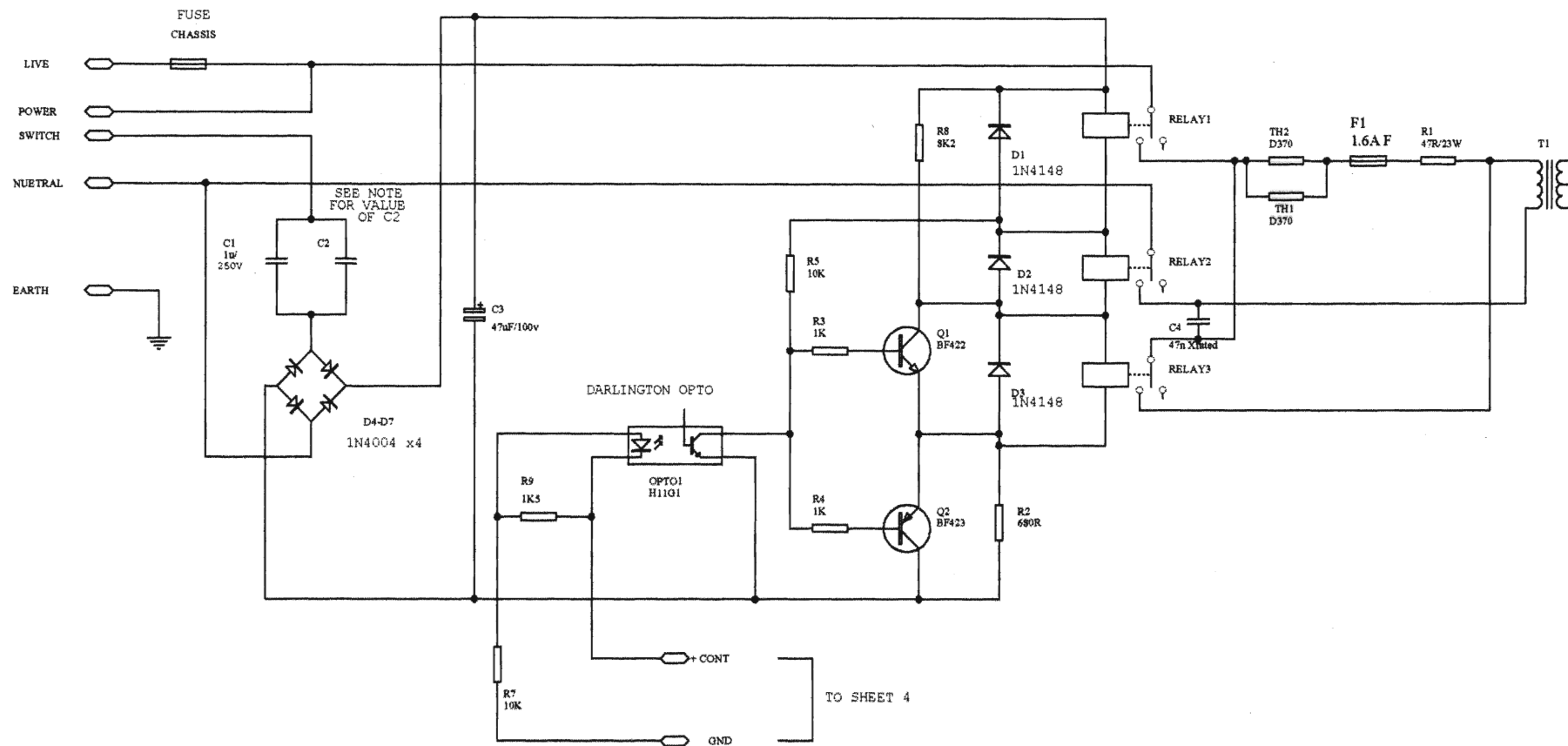
SHEET 3



SRX3801 PSU

Size	Number	Revision
A3		1
Date:	Jul-1999	Sheet of 3
File:	D:\PROJETS\SRX3801\SRX3801.PSU	



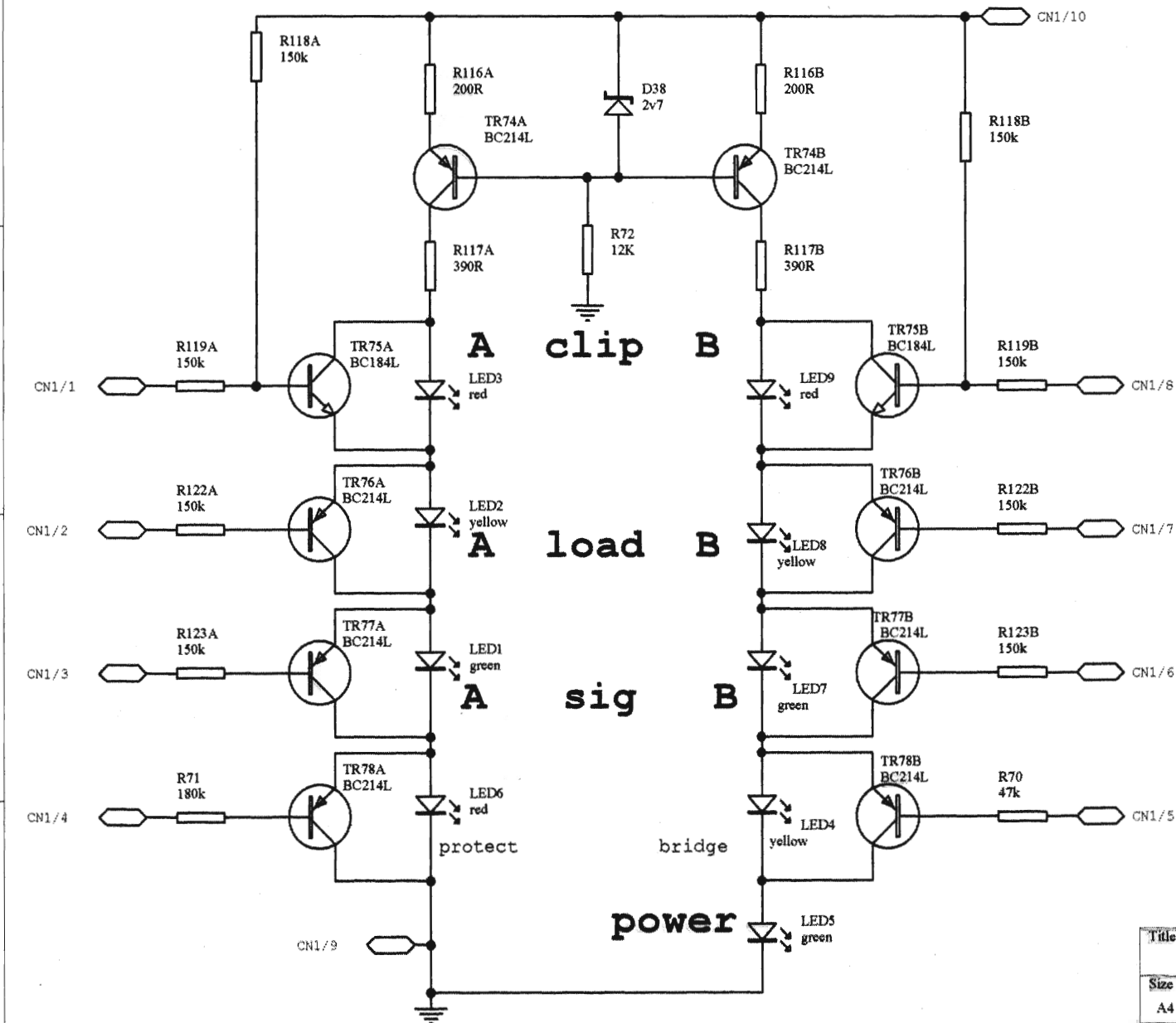


SHEET 6

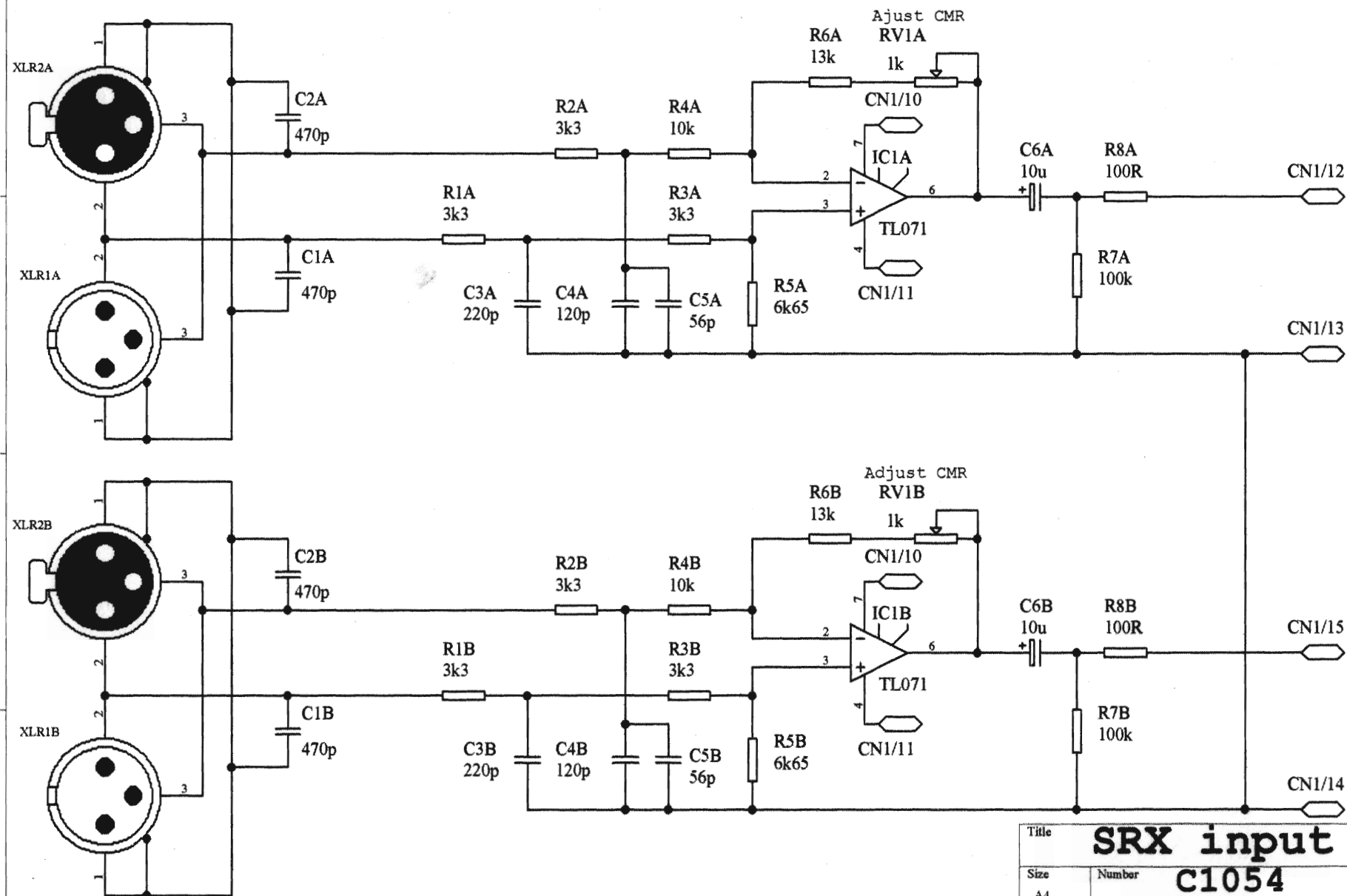
NOTE 1:
C2 IS ONLY FITTED WHEN UNIT IS USED ON 100/120V SUPPLY.
ITS VALUE BEING
THE SAME AS C1 1u/250V

NOTE 2:
SOFT START FUSE - 1.6A FAST BLOW
WITH AN I²t RATING OF 5.2
RS PART# 416-326

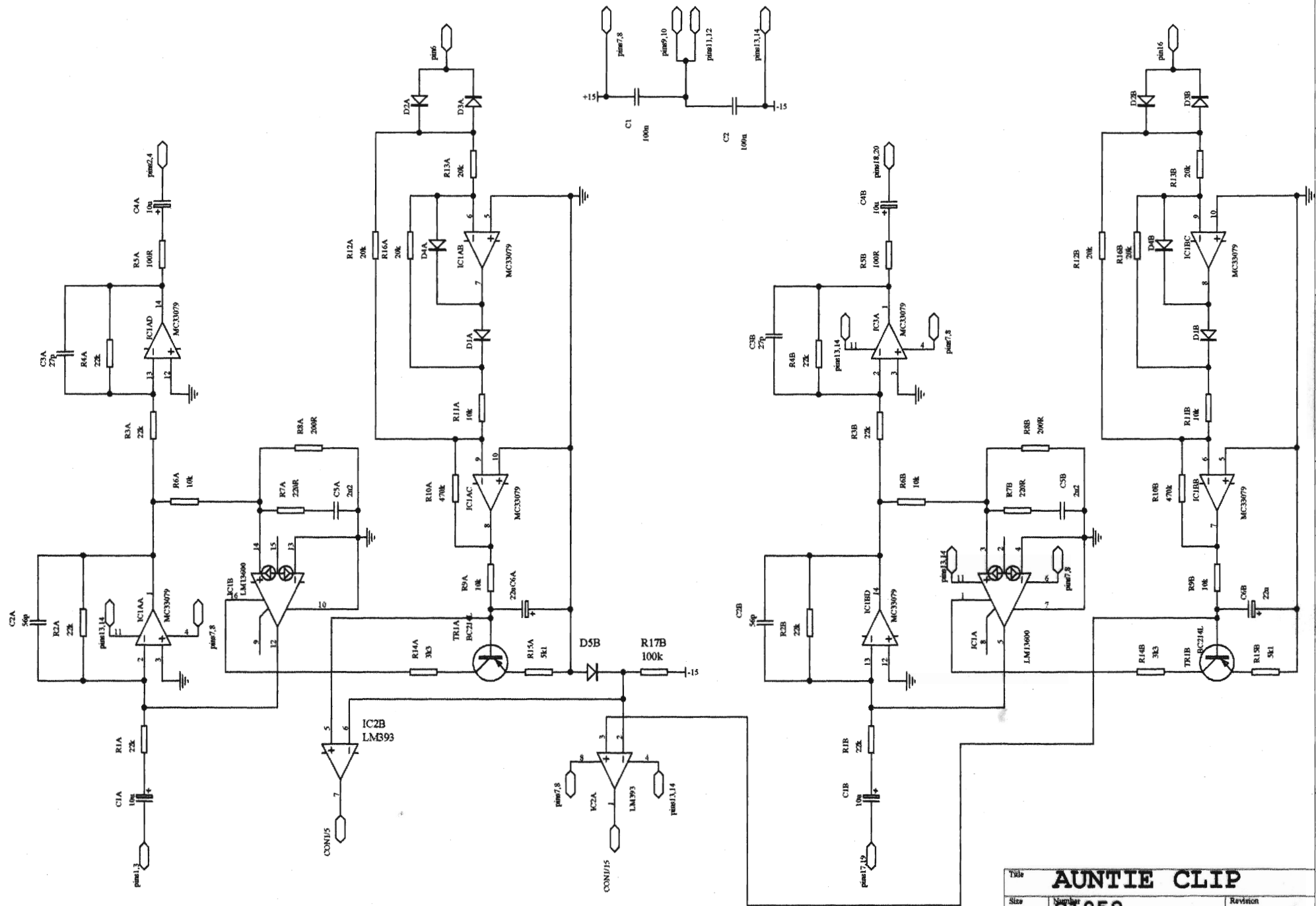
Title	XR3801 SOFT START		
Size	Number	Revision	
A3	CA1060	1	
Date:	1-Jul-1999	Sheet of	8
File:	XR3801/100V/230V/5.2A/800	Drawn By	A.P.



Title SRX LED BOARD		
Size A4	Number C1059	Revision
Date: 1-Jul-1999	Sheet of 5	6
File: D:\PROTEL\SRX\SRXLED.S01	Drawn By: A.C.	



Title			SRX input card	
Size	Number	C1054		Revision
A4				
Date:	1-Jul-1999	Sheet of		
File:	D:\PROTEL\SRX\INPUT.SCH	Drawn By:		A.C.



Title	AUNTIE CLIP		
Size	Number	Revision	
A3	CI058		
Date:	1-Jul-1999	Sheet of	
File:	D:\PROJECTS\AUNTIE CLIP 501	Drawn By:	A. C.