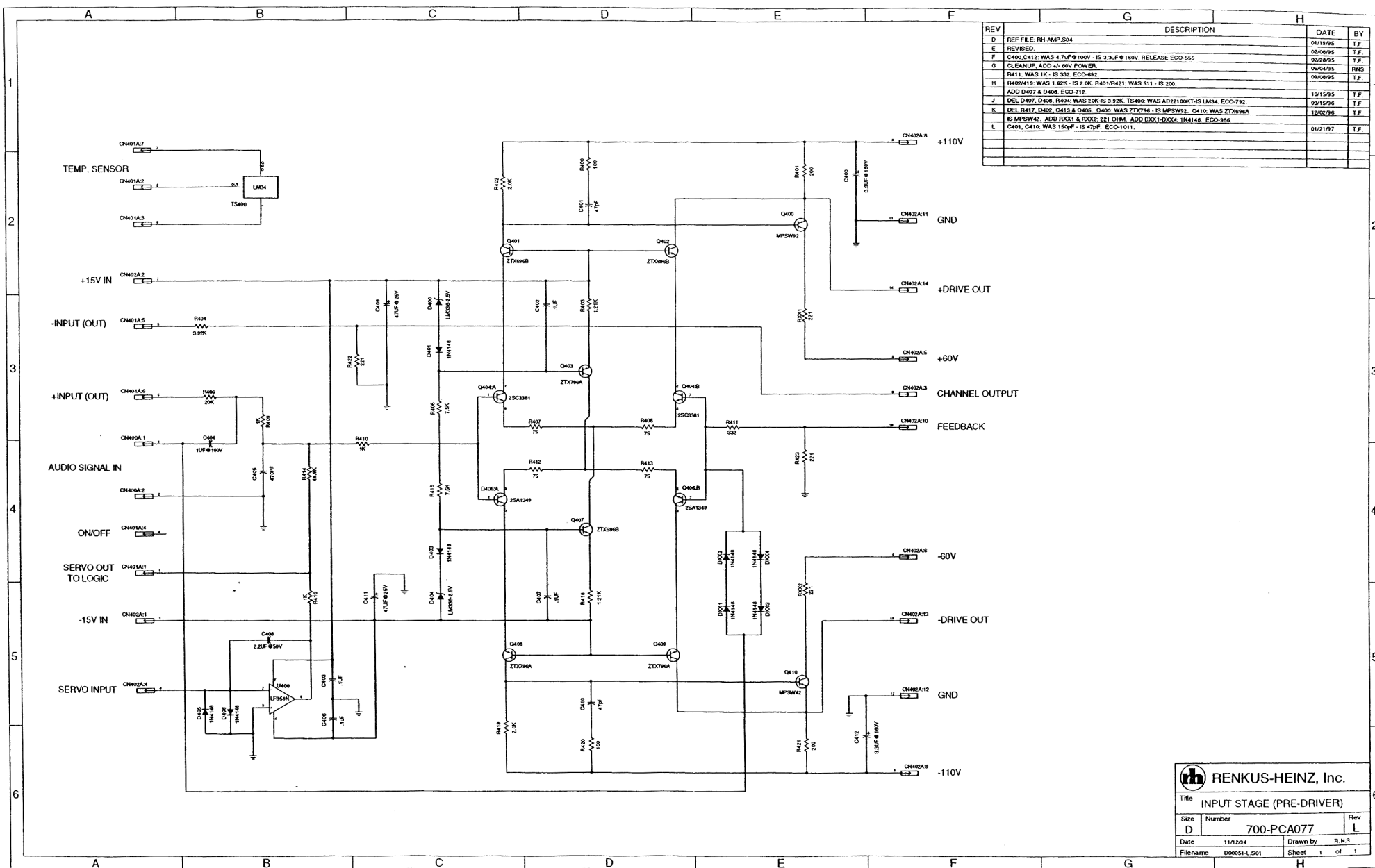
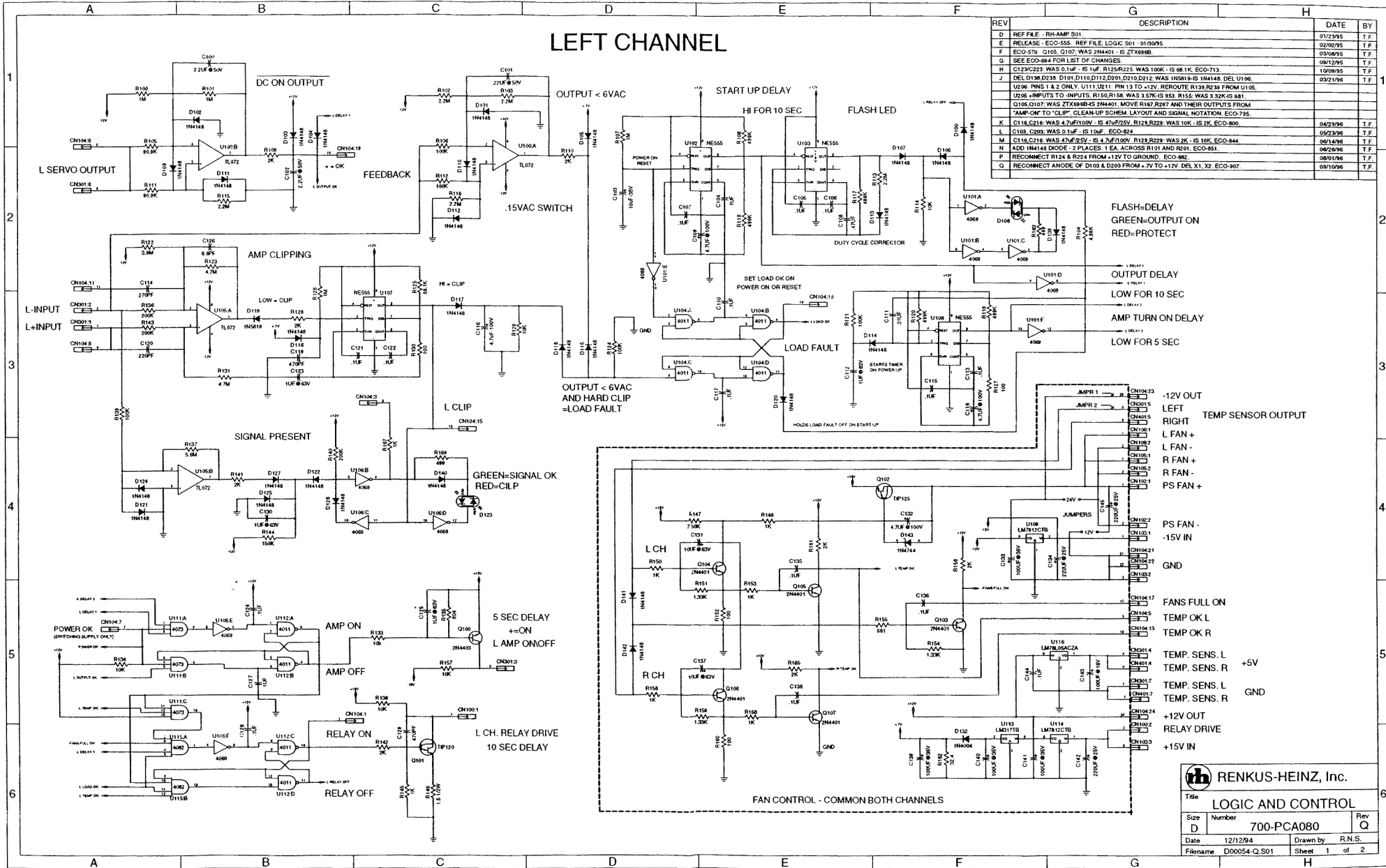


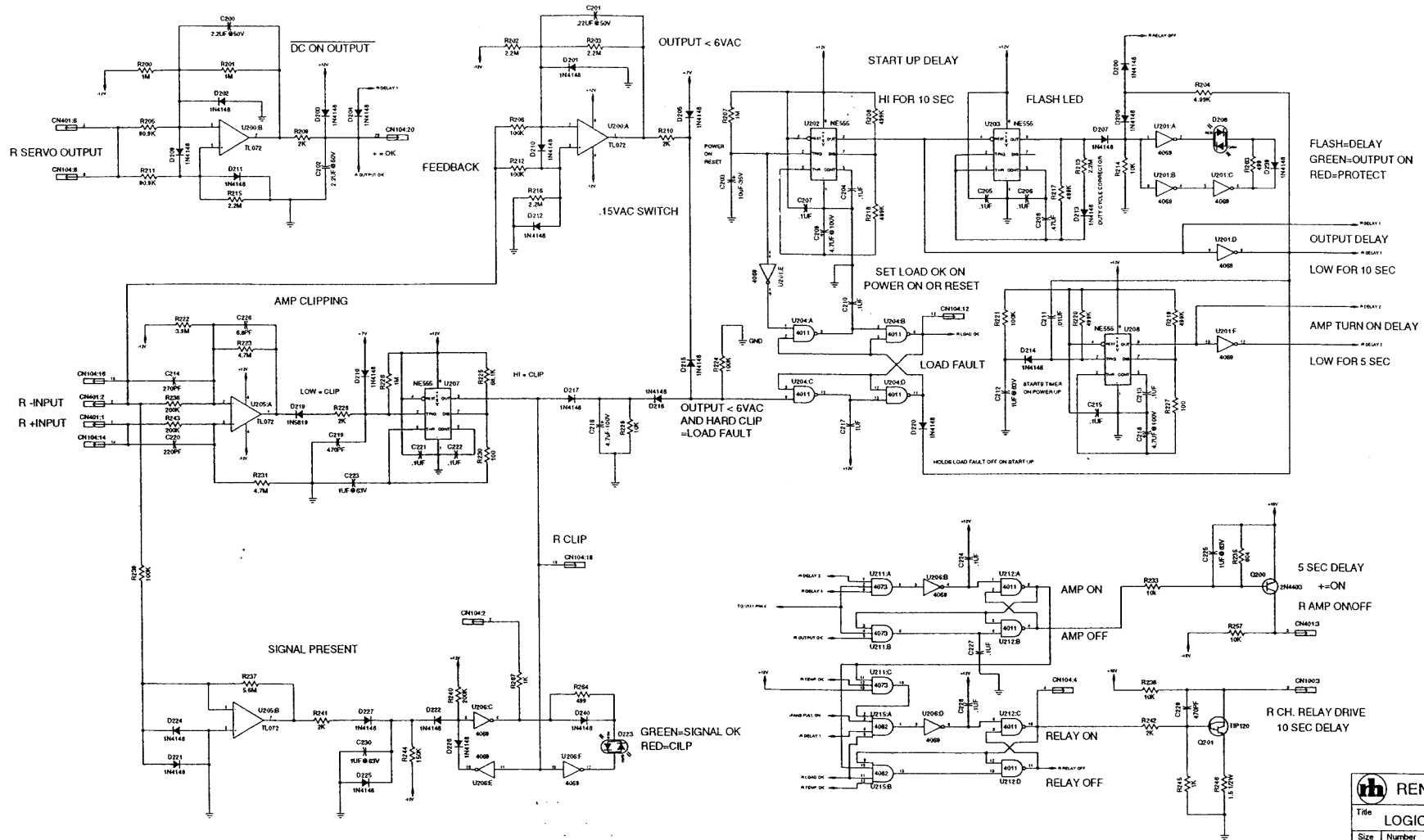
Title RH-AMP INPUT MOD.			
Size	Number	Rev	
D	700-PCA082	F	
Date	12/28/94	Drawn by	F.O.
Filename	DOO057-F.S02	Sheet	2 of 2

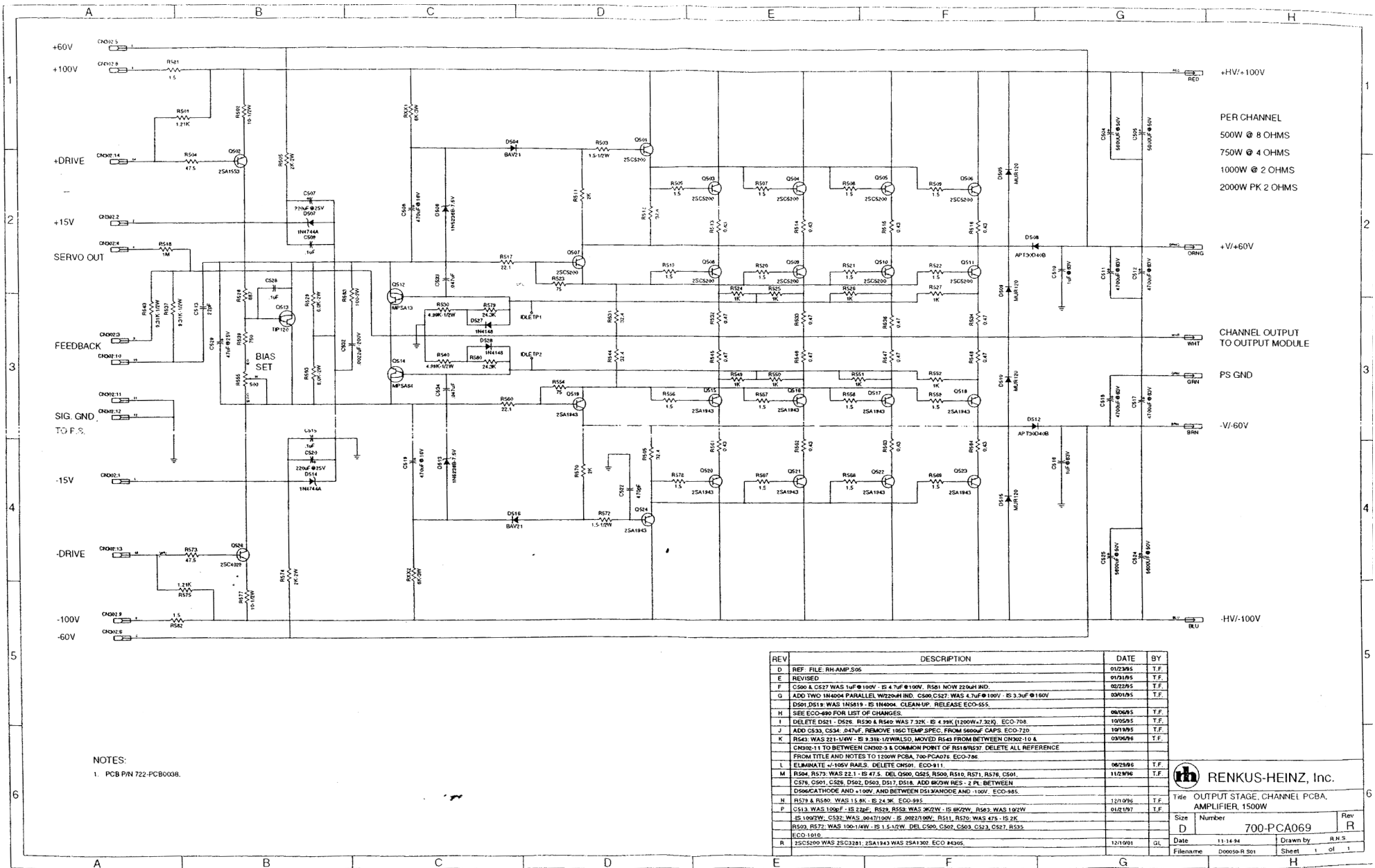


LEFT CHANNEL



RIGHT CHANNEL





REV	DESCRIPTION	DATE	BY
D	REF. FILE: RH.AMP.506	01/23/95	T.F.
E	REVISED	01/21/95	T.F.
F	C500 & C527 WAS 1uF @ 100V - IS 4.7uF @ 100V. R501 NOW 220uH IND.	02/22/95	T.F.
G	ADD TWO 1N4004 PARALLEL 1W/200V IND. C500 C527 WAS 4.7uF @ 100V - IS 3.3uF @ 160V	03/01/95	T.F.
H	D501, D516 WAS 1N5819 - IS 1N4004. CLEANUP. RELEASE ECO-555.	08/06/95	T.F.
I	SEE ECO-480 FOR LIST OF CHANGES.	08/06/95	T.F.
J	DELETE D521 - D526. R530 & R540 WAS 7.32K - IS 4.99K (1200W-1.32K). ECO-708	10/05/95	T.F.
K	ADD C533, C534. 0.47uF. REMOVE 195C TEMP SPEC. FROM 5600uF CAPS. ECO-720	10/19/95	T.F.
L	R543 WAS 221-1uH - IS 9.31K-1/2W/LSO. MOVED R543 FROM BETWEEN C502-10 & C502-11 TO BETWEEN C502-3 & COMMON POINT OF R518/R520. DELETE ALL REFERENCE FROM TITLE AND NOTES TO 1200W PCB, 700-PCA076. ECO-746	03/06/96	T.F.
M	ELIMINATE +/-105V RAILS. DELETE C501. ECO-911	06/25/96	T.F.
N	R504, R573 WAS 22.1 - IS 47.5. DEL C500, C525, R500, R510, R571, R576, C501, C576, C501, C526, D502, D503, D517, D518. ADD 800W RES - 2 PL. BETWEEN DIODE CATHODE AND +100V. AND BETWEEN DIODE ANODE AND -100V. ECO-985	11/2/96	T.F.
O	R579 & R580 WAS 15.8K - IS 24.3K. ECO-995	1/27/98	T.F.
P	C513 WAS 100uF - IS 22uF. R529, R559 WAS 3K/2W - IS 8K/2W. R563 WAS 100W - IS 100W/2W. C532 WAS 0.047/100V - IS 0.022/100V. R511, R570 WAS 475 - IS 2K. R509, R572 WAS 100-1/4W - IS 1.5-1/2W. DEL C500, C507, C503, C523, C527, R539. ECO-1016	01/21/97	T.F.
R	25C5200 WAS 25C3281. 25A1943 WAS 25A1307. ECO #4305.	12/10/01	GL

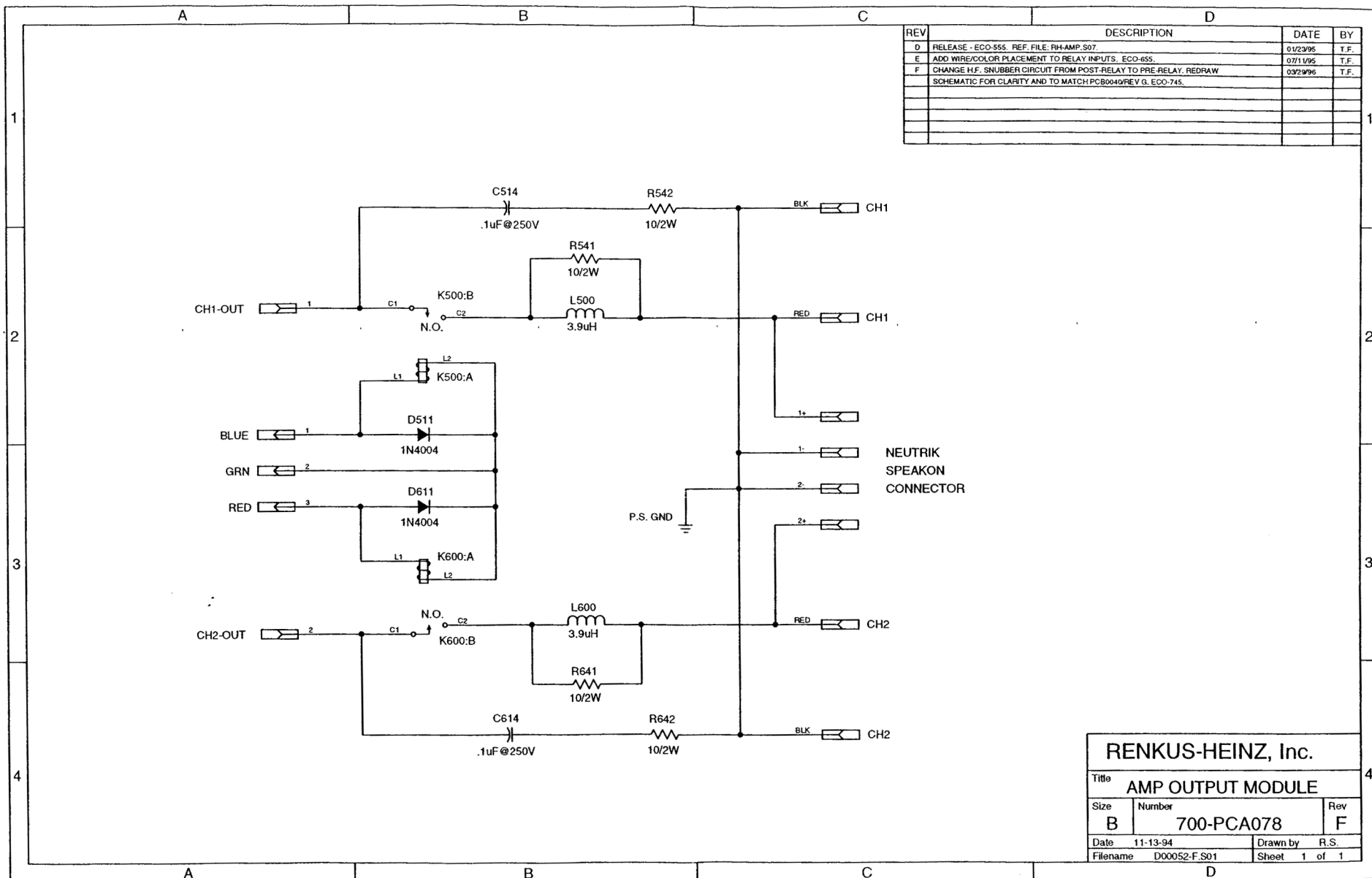
RENKUS-HEINZ, Inc.

Title: OUTPUT STAGE, CHANNEL PCB, AMPLIFIER, 1500W

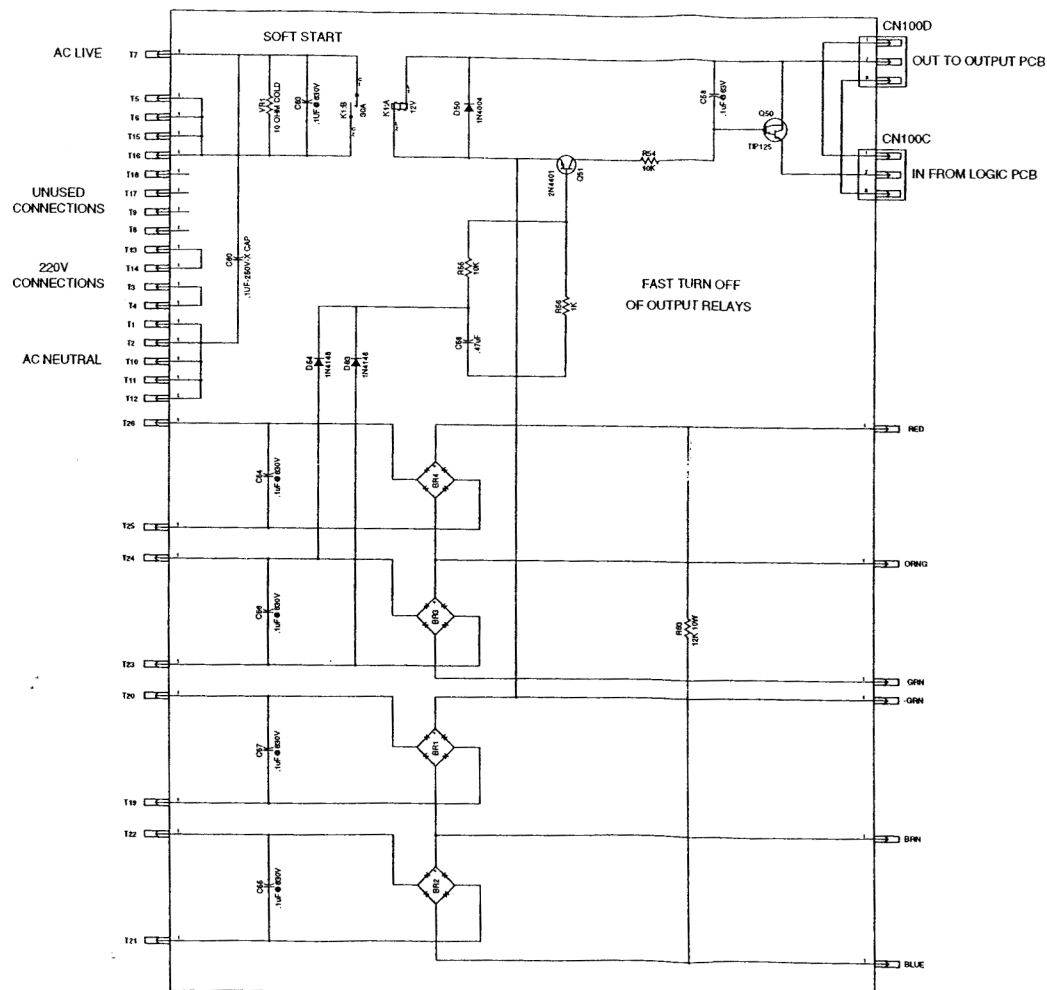
Size: Number: Rev:

Date: 11-14-94 Drawn by: R.N.S.

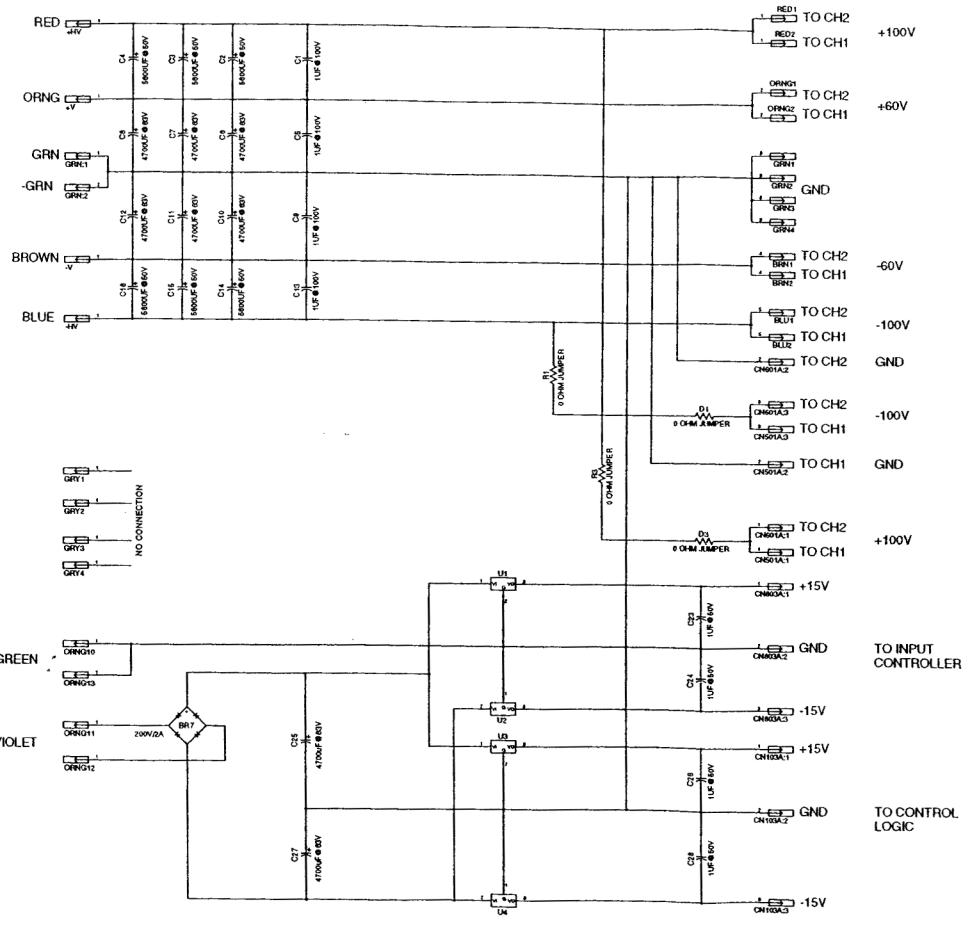
Filename: 000050-R 501 Sheet: 1 of 1



REV	DESCRIPTION	DATE	BY
D	NOTE: REF FILE: RH-AMP 506	01/10/95	T.F.
E	RELEASE: ECO-555	02/07/95	T.F.
F	ADD LOCATION CS2: 1uF - (REF: PCB ECO438) ECO-451		
G	CSO: WAS 100uF @ 160V - IS 100uF @ 100V. CORRECTION OF SCHEMATIC ONLY TO REFLECT ACTUAL PART BEING USED	07/06/95	T.F.
H	SEE ECO-493 FOR LIST OF CHANGES	09/08/95	T.F.
I	ADD CONNECTIONS FOR UNIVERSAL AC INPUT	10/04/95	R.N.S.
J	CORRECT INPUT LABELING TO CORRESPOND WITH PCB ADD C40: 1 @ 250V ECO 747.	09/27/95	T.F.



RENKUS-HEINZ, Inc.	
Title: AC INPUT MODULE	
Size: D	Number: 700-PCA103
Date: 12/06/94	Drawn by: R.N.S.
Filename: D00653-H-501	Sheet: 1 of 1



REV	DESCRIPTION	DATE	BY
D	NOTE: REF FILE: RHAMP.S08	01/15/95	T.F.
E	DEL IN/PMPS. ADD D1-2, R1-4, D1-4, C29 & C30.	02/09/95	R.N.S.
F	RELEASE REV E: ECO-555	02/24/95	T.F.
G	D1 - D4: REVERSE ALL. R1 & R3: WAS 1K - IS 2K. R2 & R4: WAS 1K - IS 1.21K.	07/07/95	T.F.
H	C29 & C30: WAS 47uF @ 100V - IS 22uF @ 250V (C29/C30 REF. SWITCHED). ECO-552		
I	BR7: WAS 1A - IS 2A. C1,C5,C9,C13: WAS 1uF @ 50V - IS 1uF @ 100V. C17,C20: WAS 1uF @ 100V - IS 2uF @ 100V. DEL 1200W REF. CLEANUP NOTATION. ECO-797.	04/01/95	T.F.
J	WAS JUMPER WIRE FROM CNS01-1 TO RED1 - IS TWO 0 OHM JUMPERS IN LOC. R3 & D3.	04/30/96	T.F.
K	WAS JUMPER WIRE FROM CNS01-3 TO BLU1 - IS TWO 0 OHM JUMPERS IN LOC. R1 & D1.	06/24/96	T.F.
	ECO-849		
	C27 & C28 WERE 12000uF/50V. ECO #3091.	6/23/00	GL

RENKUS-HEINZ, Inc.		Title		POWER SUPPLY
		Size		Number
Date		12/06/94		Rev
Filename		D00053-K.S01		K
Sheet		1 of 1		