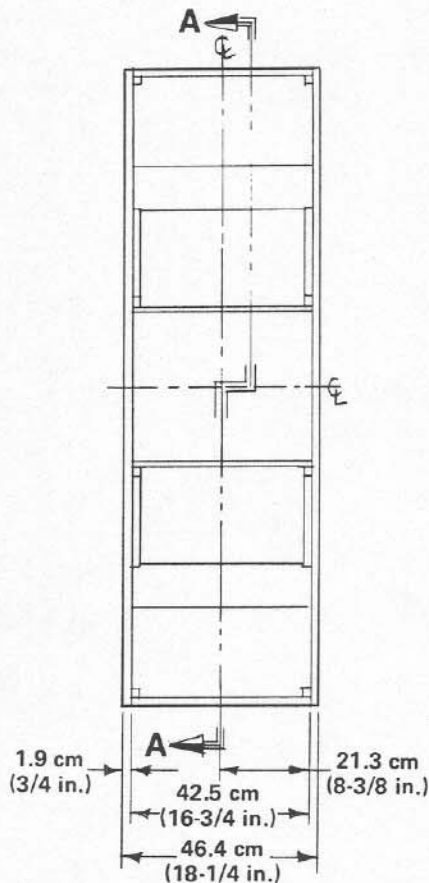


# TL4025

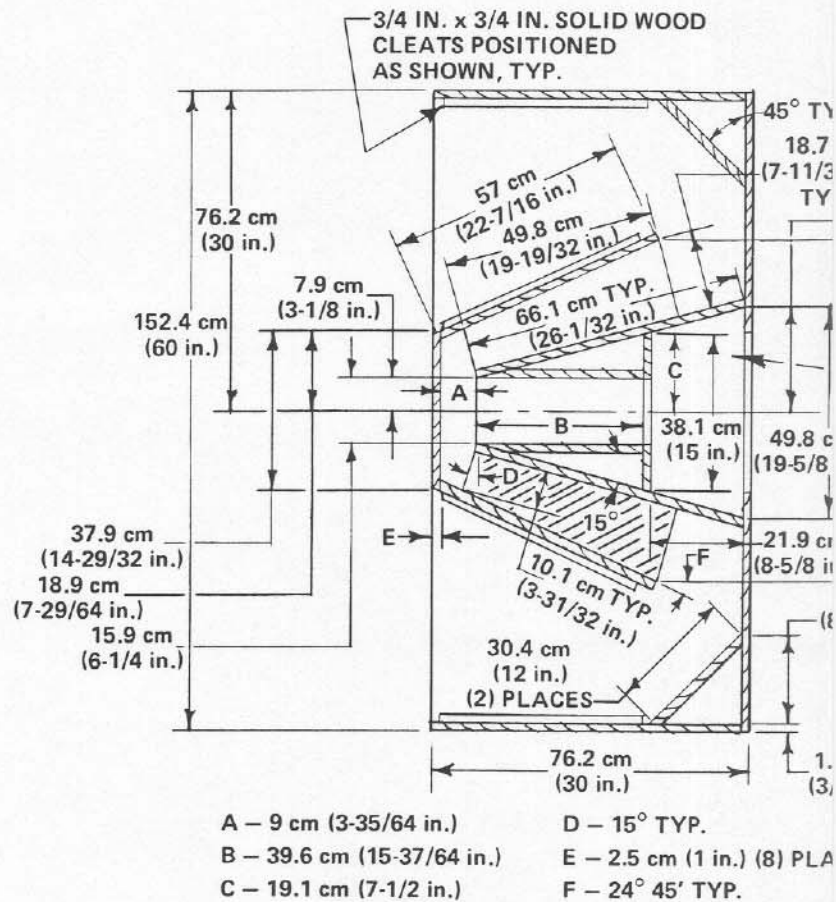
BUILDERS PLANS

(1) EVM ■ 15L,

HORN-LOADED BASS BOX



FRONT VIEW



SECTION A-A

## NOTES:

- 1 - ALL JOINTS TO BE SECURELY GLUED.
- 2 - ALL AIR CHAMBER JOINTS MUST BE AIR TIGHT.
- 3 - ALL PANELS TO BE 3/4 IN. THICK VOID FREE CORE PLYWOOD.
- 4 - TOLERANCE  $\pm .08$  CM (1/32 IN.).
- 5 - AN ADDITIONAL SPEAKER GASKET (PART NUMBER 37320) IS REQUIRED FOR CLEARANCE BETWEEN BAFFLE AND SPEAKER.

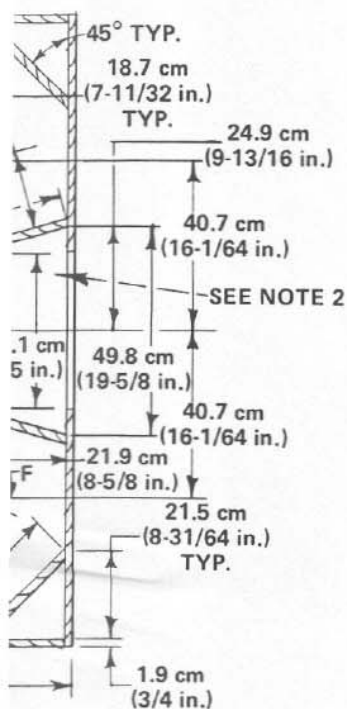
Item	Description
1	Top & Bottom Panels
2	Back Panel
3	Corner Brace
4	Air Chamber (Top & Bottom)
5	Baffle
6	Horn Throat (Top & Bottom)
7	Outer Horn Throat
8	Horn End Cap
9	Access Panel
10	Side Panel
11	Air Chamber Side Panels
12	Horn Brace
13	Horn Brace (Center)



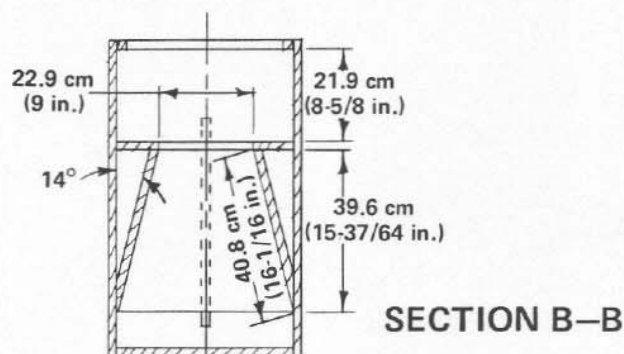
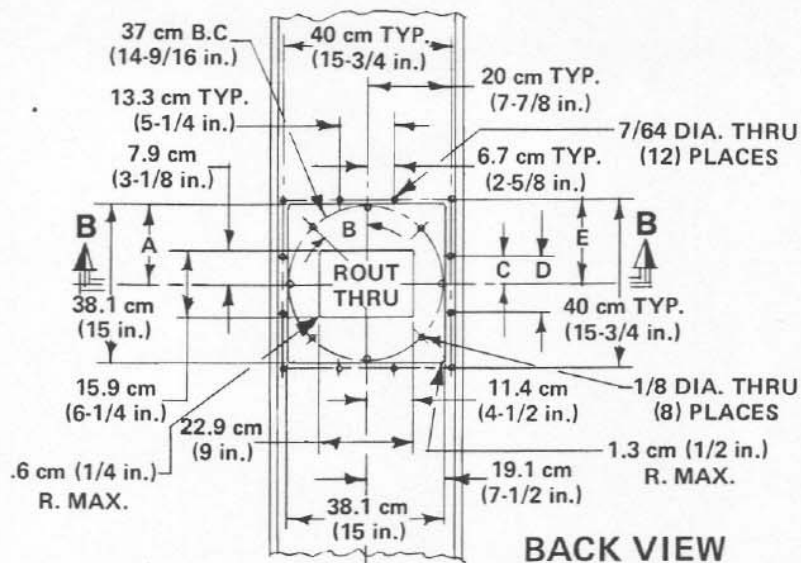
**Electro-Voice®**

600 CECIL STREET, BUCHANAN, MICHIGAN 49107

D

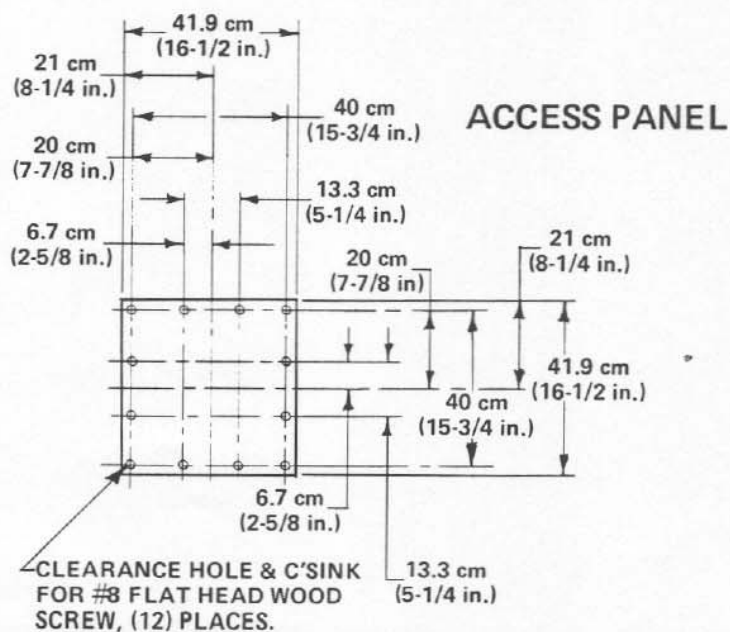


P.  
(1 in.) (8) PLACES  
TYP.



A - 19.1 cm (7-1/2 in.)  
B - 45° TYP.  
C - 6.7 cm (2-5/8 in.) TYP.

D - 13.3 cm (5-1/4 in.) TYP.  
E - 20 cm (7-7/8 in.) TYP.



Description	Qty.	4025
m Panels	2	16-3/4 x 29-1/4
	1	16-3/4 x 60
	2	16-3/4 x 12
(Top & Bottom)	2	16-3/4 x 26-1/32
	1	16-3/4 x 15
(Top & Bottom)	2	16-3/4 x 15-37/64
Throat	2	16-3/4 x 22-7/16
p	1	16-3/4 x 14-29/32
	1	16-1/2 x 16-1/2
Side Panels	2	30 x 60
	2	16-1/16 x 6-1/4
	2	19-19/32 x 7-11/32
(Center)	0	---

All Dimensions shown in centimeters and (inches)