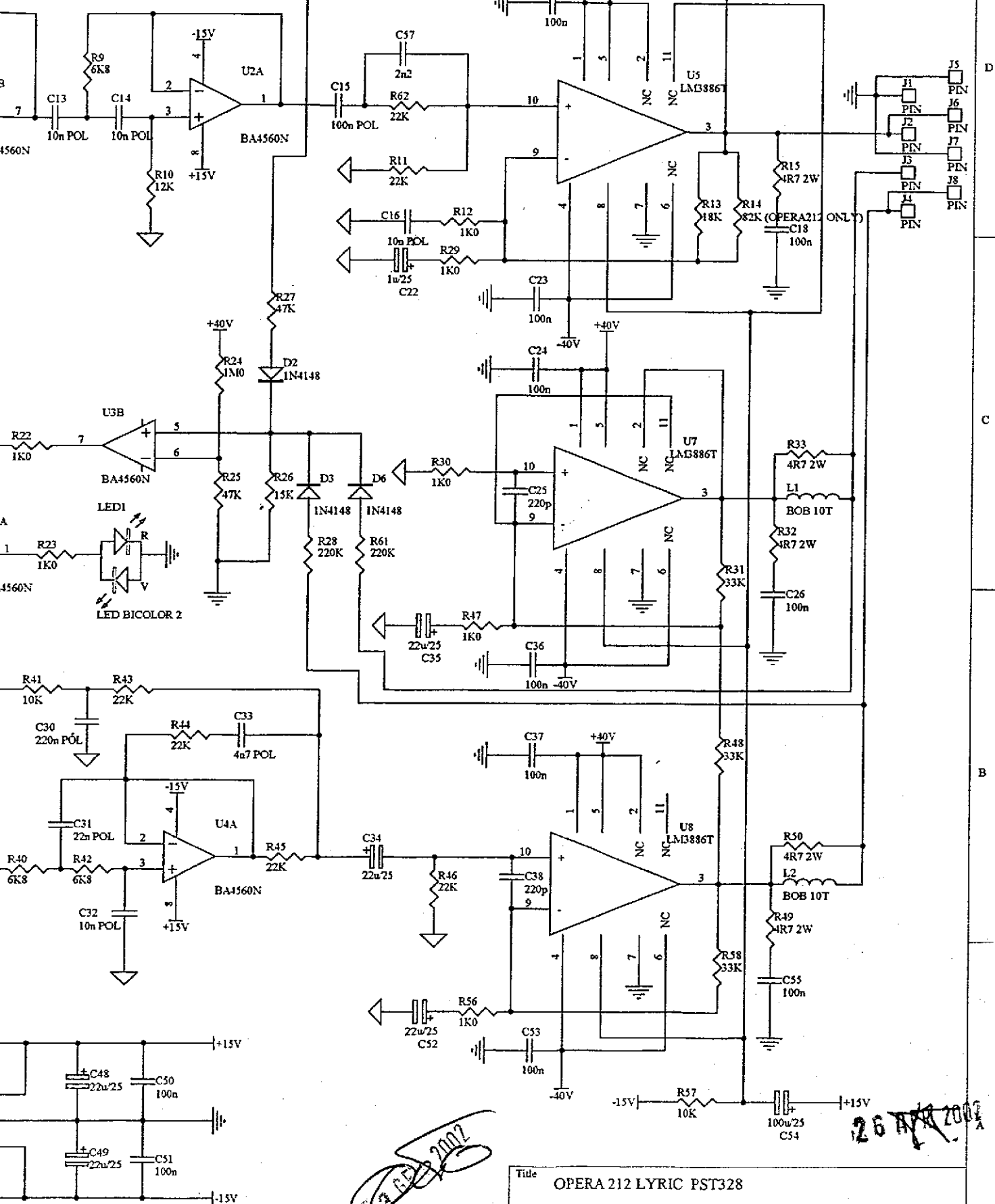
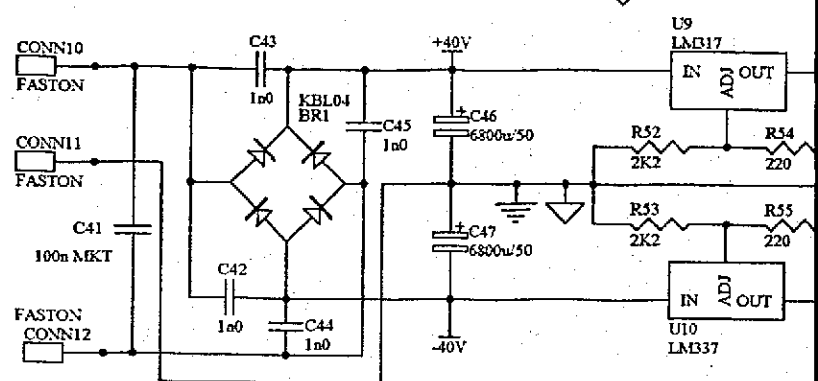
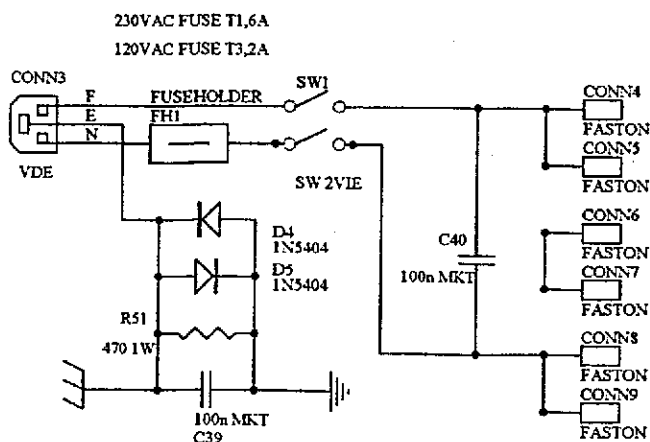
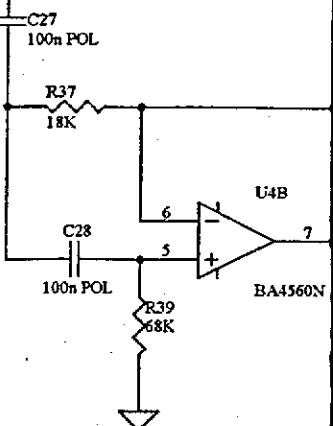
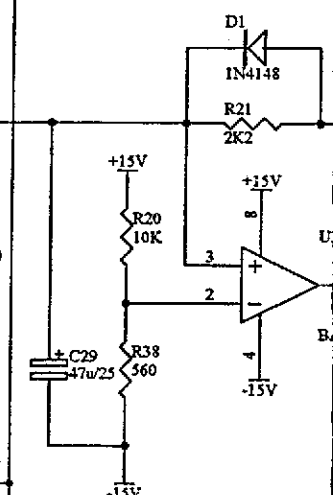
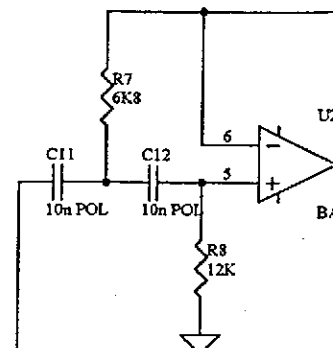
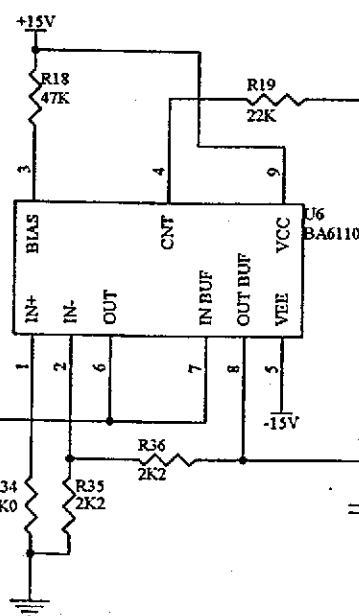
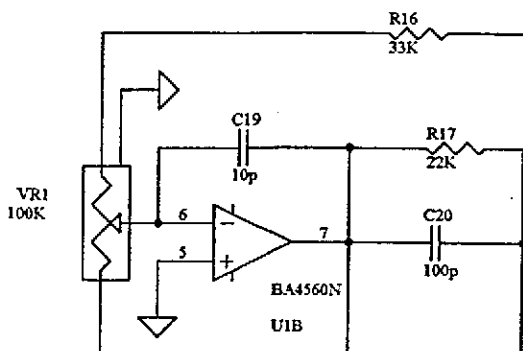
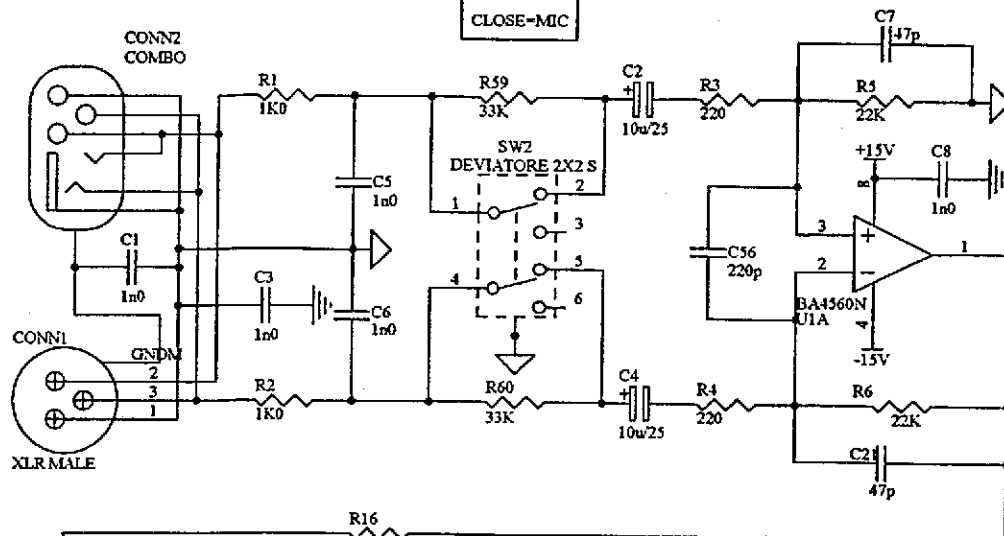


F CUT 2500HZ 24dB/OCT



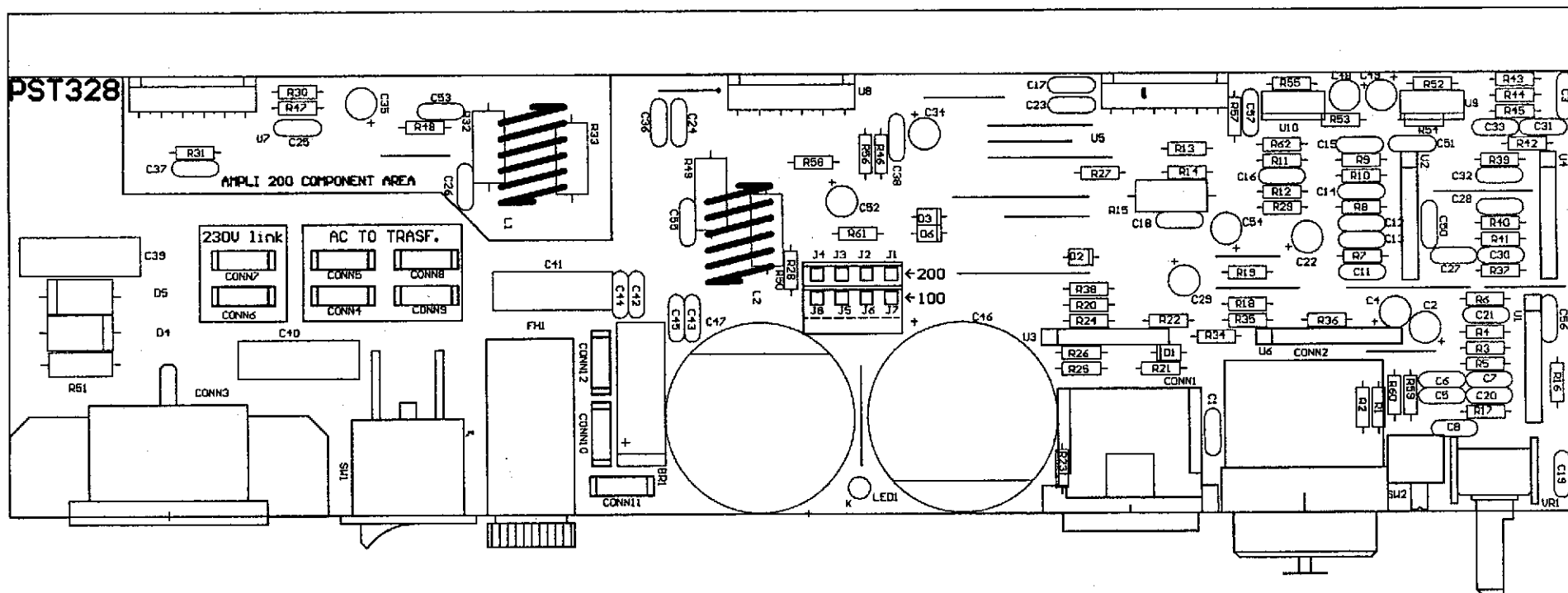
Title		
OPERA 212 LYRIC PST328		
Size	Number	Revision
Orcad A	OPERA212-LYR.SCH	
Date:	21-Dec-2001	Sheet of
File:	C:\Program Files\Design Explorer 99 SE\OPERA212-LYR.dcb	

OPEN-LINE
CLOSE-MIC



VERSIONE LYRIC

OPERA 212 = R13 + R14
OPERA 215 = R13 ONLY



2000 2000 2000

1 Bill of Material for opera212-LYR.Bom			
2			
3	Used Part Type	Designator	Foot print
4	=====	=====	=====
5 10	1K0	R1 R2 R12	R 1/4W
6		R22 R23	
7		R29 R30	
8		R34 R47	
9		R56	
10 1	1M0	R24	R 1/4W
11 4	1N4148	D1 D2 D3	DI ODE P7.5
12		D6	
13 2	1N5404	D4 D5	DI ODE P17.5
14 9	1n0	C1 C3 C5	COND P5
15		C6 C8 C42	
16		C43 C44	
17		C45	
18 1	1u/25	C22	ELECT P2.5 D5
19 5	2K2	R21 R35	R 1/4W
20		R36 R52	
21		R53	
22 1	2n2	C57	COND P5
23 5	4R7 2W	R15 R32	R 2W
24		R33 R49	
25		R50	
26 1	4n7 POL	C33	COND P5
27 4	6K8	R7 R9 R40	R 1/4W
28		R42	
29 3	10K	R20 R41	R 1/4W
30		R57	
31 6	10n POL	C11 C12	COND P5
32		C13 C14	
33		C16 C32	
34 1	10p	C19	COND P5
35 2	10u/25	C2 C4	ELECT P2.5 D5
36 2	12K	R8 R10	R 1/4W
37 1	15K	R26	R 1/4W
38 2	18K	R13 R37	R 1/4W
39 10	22K	R5 R6 R11	R 1/4W
40		R17 R19	
41		R43 R44	
42		R45 R46	
43		R62	
44 1	22n POL	C31	COND P5
45 5	22u/25	C34 C35	ELECT P2.5 D5
46		C48 C49	
47		C52	
48 6	33K	R16 R31	R 1/4W
49		R48 R58	
50		R59 R60	
51 3	47K	R18 R25	R 1/4W
52		R27	
53 2	47p	C7 C21	COND P5
54 1	47u/25	C29	ELECT P2.5 D5
55 1	68K	R39	R 1/4W
56 1	82K (OPERA212 ONLY)	R14	R 1/4W
57 1	100K	VR1	POT H 12
58 10	100n	C17 C18	COND P5
59		C23 C24	
60		C36 C37	
61		C50 C51	
62		C53 C55	
63 1	100n	C26	COND P5
64 3	100n MKT	C39 C40	COND P15
65		C41	
66 3	100n POL	C15 C27	COND P5
67		C28	
68 1	100p	C20	COND P5
69 1	100u/25	C54	ELECT P2.5 D5
70 4	220	R3 R4 R54	R 1/4W
71		R55	
72 2	220K	R28 R61	R 1/4W
73 1	220n POL	C30	COND P5
74 3	220p	C25 C38	COND P5
75		C56	
76 1	560	R38	R 1/4W
77 1	470 1W	R51	R 1W
78 2	6800u/50	C46 C47	ELECT SNAP30
79 4	BA4560N	U1 U2 U3	SI P-8
80		U4	
81 1	BA6110	U6	SI P-9

20 APR. 2002

J. J. J.

82 2	BOB 10T	L1 L2	BOB 10T
83 1	COMBO	CONN2	COMBO- H
84 1	DEVIATORE 2X2 S	SV2	DEV 2X2 H
85 9	FASTON	CONN4	FASTON 6, 3 V
86		CONN5	
87		CONN6	
88		CONN7	
89		CONN8	
90		CONN9	
91		CONN10	
92		CONN11	
93		CONN12	
94 1	FUSEHOLDER	FH1	FUSEHOLDER 5X20 EXT
95 1	KBL04	BR1	BRI DGE 8A SI P
96 1	LED BI COLOR 2	LED1	LED 3V
97 1	LM317	U9	TO220V
98 1	LM337	U10	TO220V
99 3	LM3886T	U5 U7 U8	ZI P-11V
100 8	PIN	J1 J2 J3	PIN
101		J4 J5 J6	
102		J7 J8	
103 1	SW 2VI E	SW1	MAI NS 90 H
104 1	VDE	CONN3	VDE M H
105 1	XLR MALE	CONN1	XLR M H N

26 APR 2002

26 APR 2002



**EMISSIONE
MODIFICA
PRODOTTO**

CIRCOLARE N° 0087

Pagina 1/1

DATA: 4/4/2002

AVVISO DI: ☐ EMISSIONE NUOVO PRODOTTO
☒ MODIFICA PRODOTTO
☐ PROPOSTA DI EMISSIONE/MODIFICA

INOLTRATO A: ☒ Acquisti ☐ Controllo Qualità
☒ Produzione ☐ Vendite
☒ Assistenza ☐ _____

UFFICIO LBF	
REDATTO DA:	Tinti
04 APR 2002	
CONTROLLATO DA:	Roccatello
04 APR 2002	
APPROVATO DA:	Roccatello
04 APR 2002	

RELATIVO AL PRODOTTO: OPERA 215 Lyric

OGGETTO: Configurazione OPERA 215 Lyric

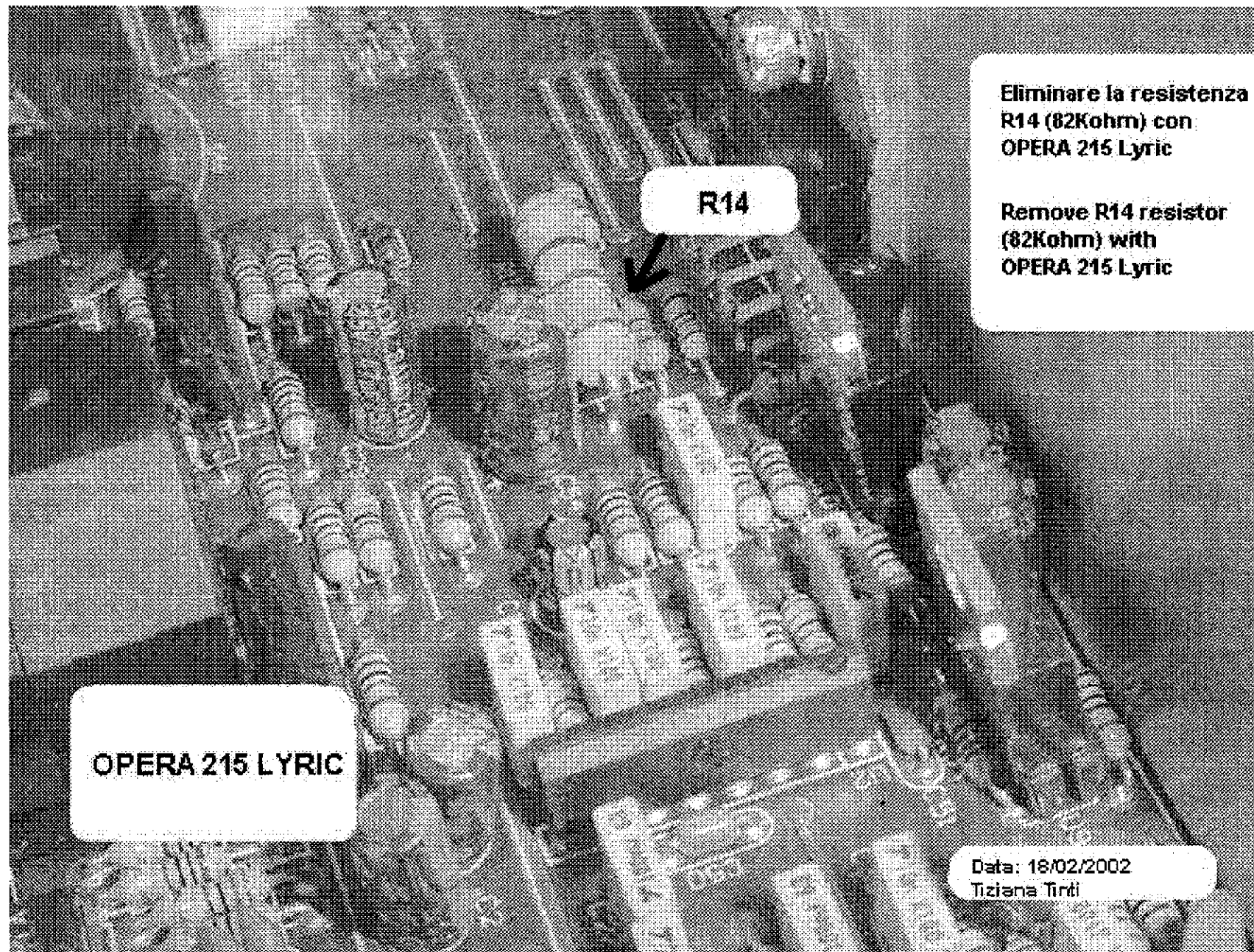
I moduli per gli amplificatori della serie OPERA 212 Lyric e OPERA 215 Lyric sono forniti uguali e sempre configurati nella versione OPERA 212 Lyric.

Se il modulo viene montato come **OPERA 212 Lyric** non occorre eseguire nessuna modifica.

Nel caso in cui il modulo amplificatore viene montato come **OPERA 215 Lyric**, occorre eseguire una modifica sul circuito stampato in fase di assemblaggio del diffusore.

La modifica sul circuito stampato PST 328 comporta **togliere** la resistenza R14 [82KΩ ¼W] (tagliare i reofori sul lato componenti) – vedi disegni allegati.

Distinti saluti



Eliminare la resistenza
R14 (82Kohm) con
OPERA 215 Lyric

Remove R14 resistor
(82Kohm) with
OPERA 215 Lyric

R14

OPERA 215 LYRIC

Data: 18/02/2002
Tiziana Tinti

29/04/2002

