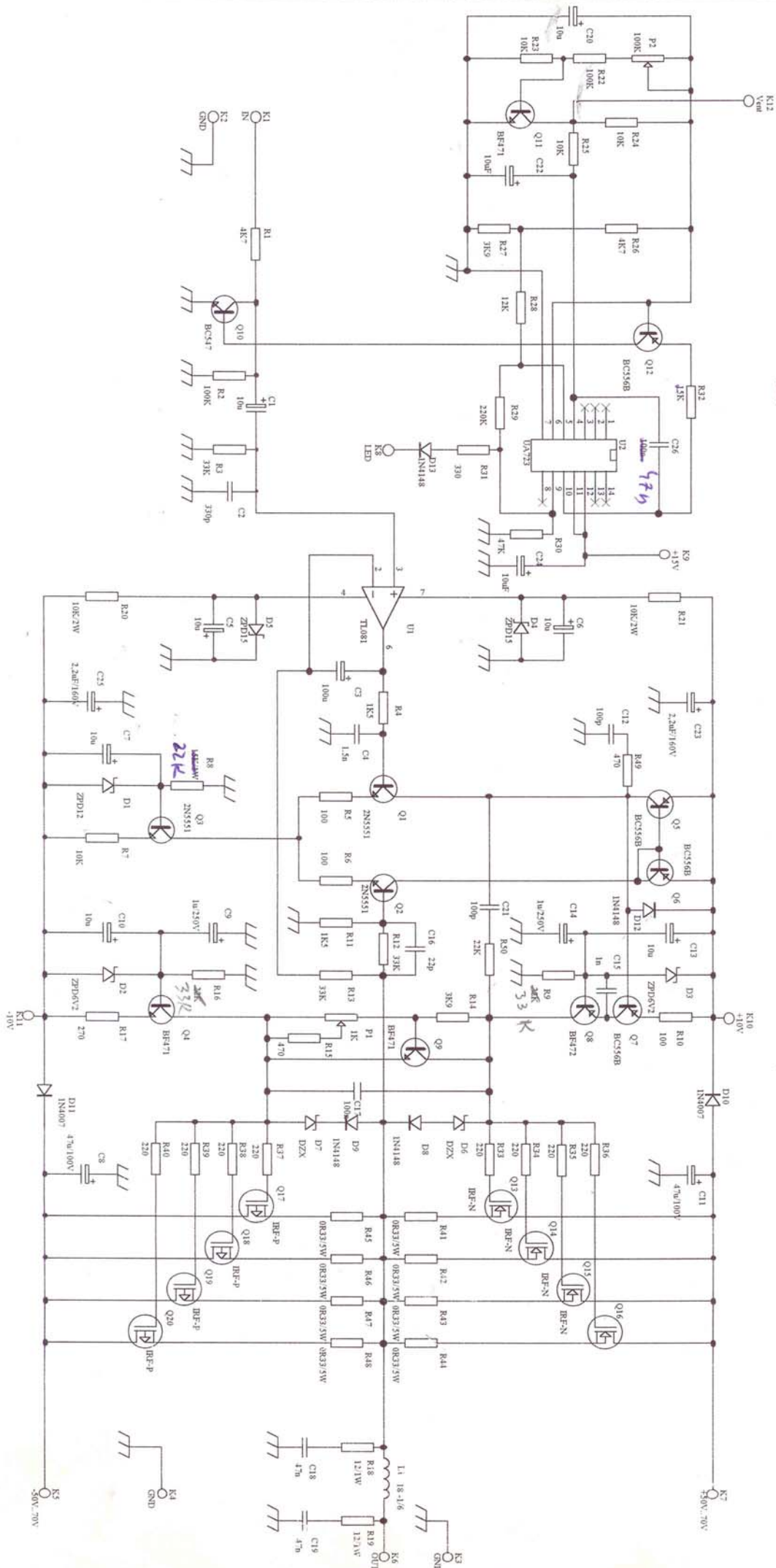
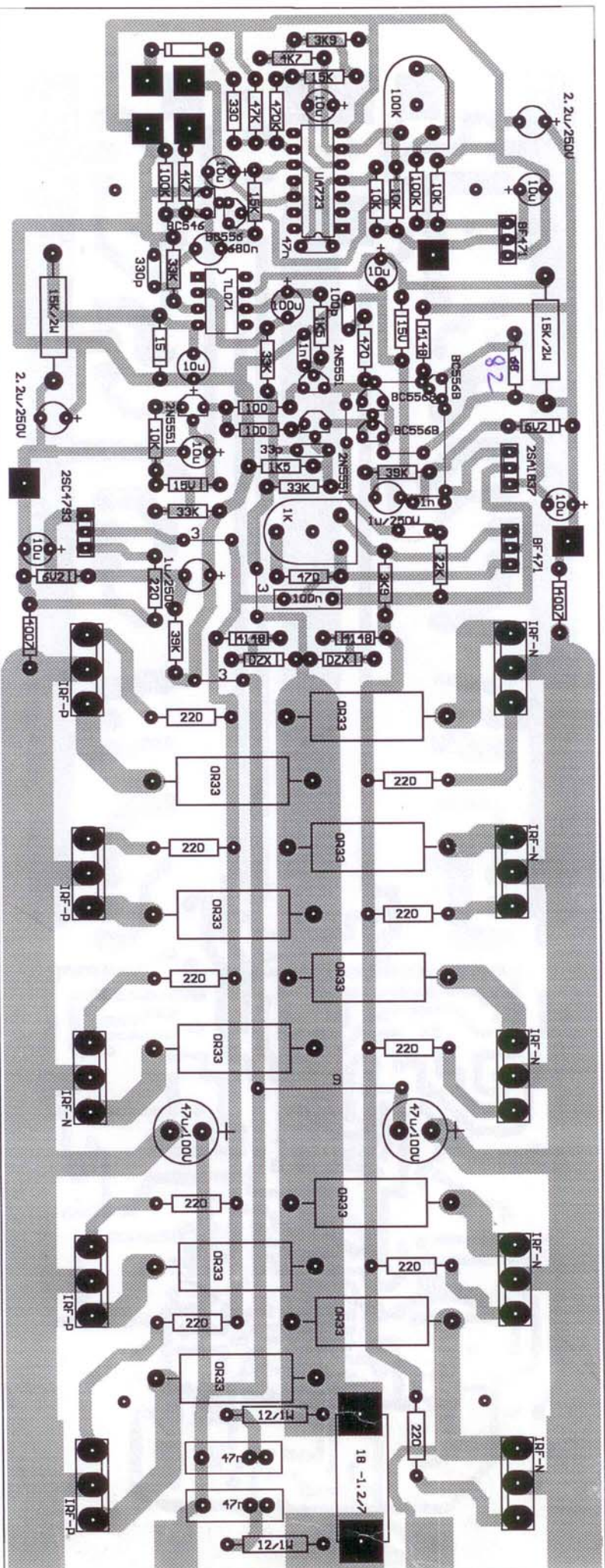


OK -2000 Jb
EX -2

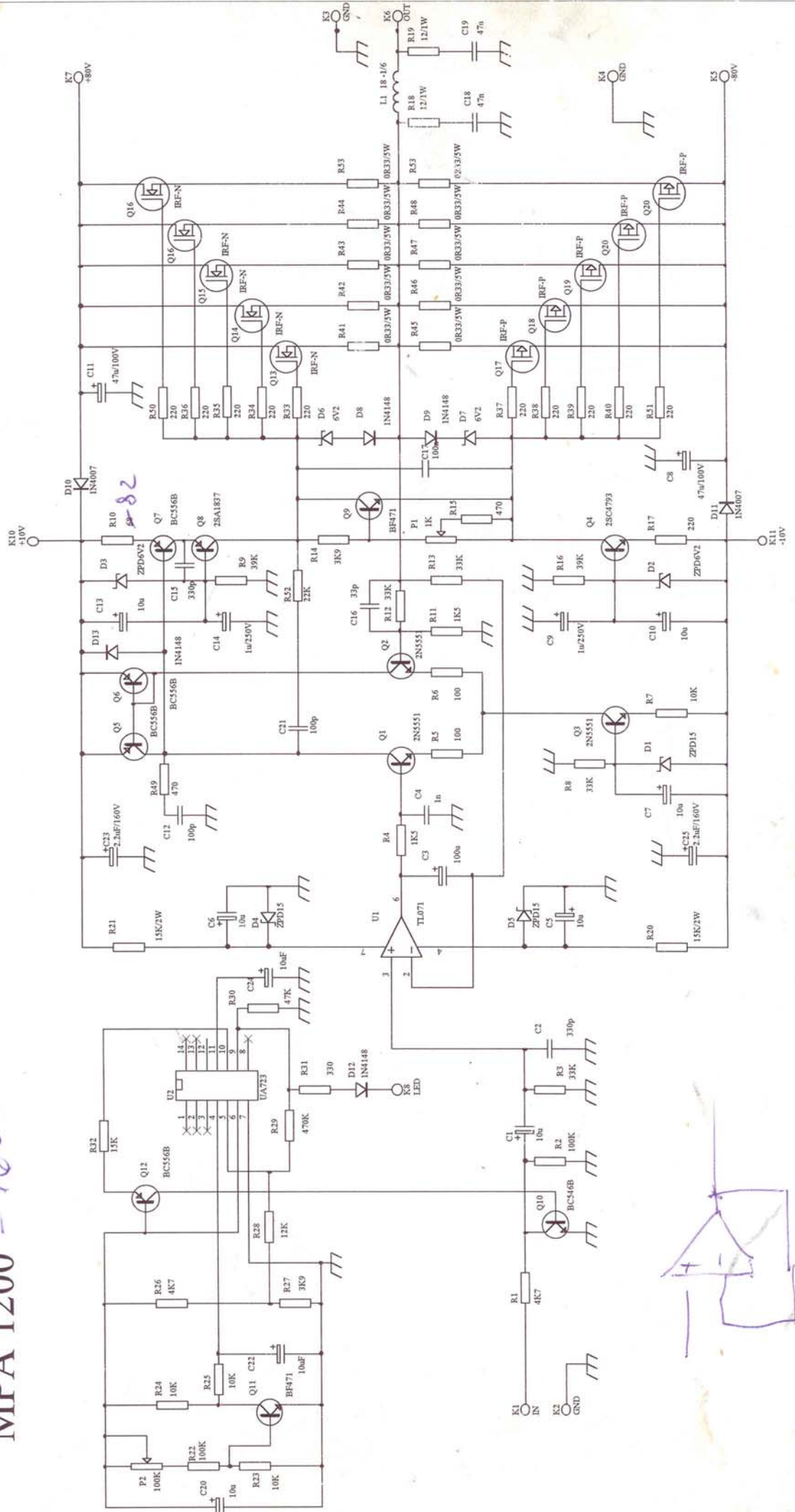
MPA 600_800

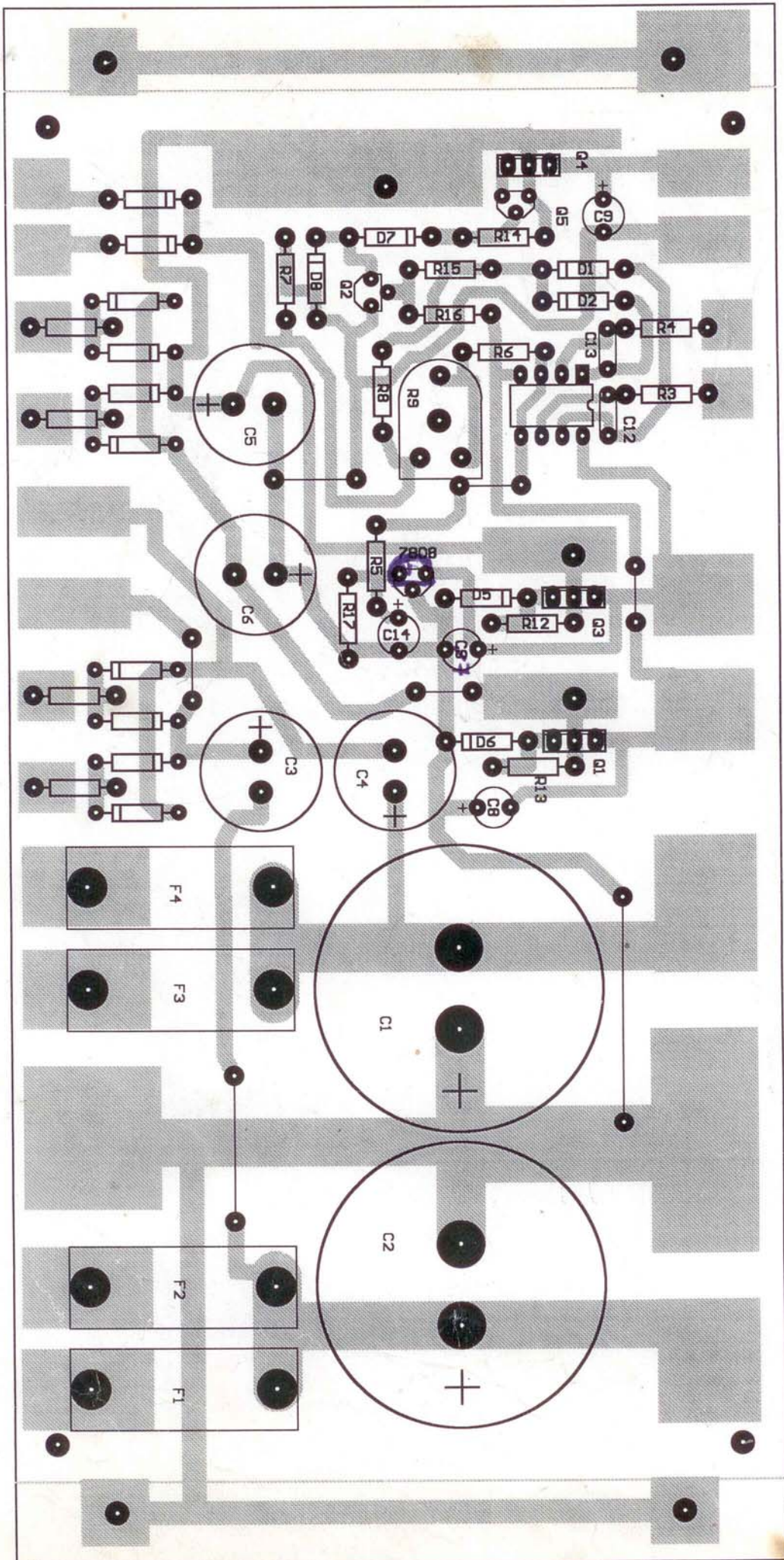


1600-



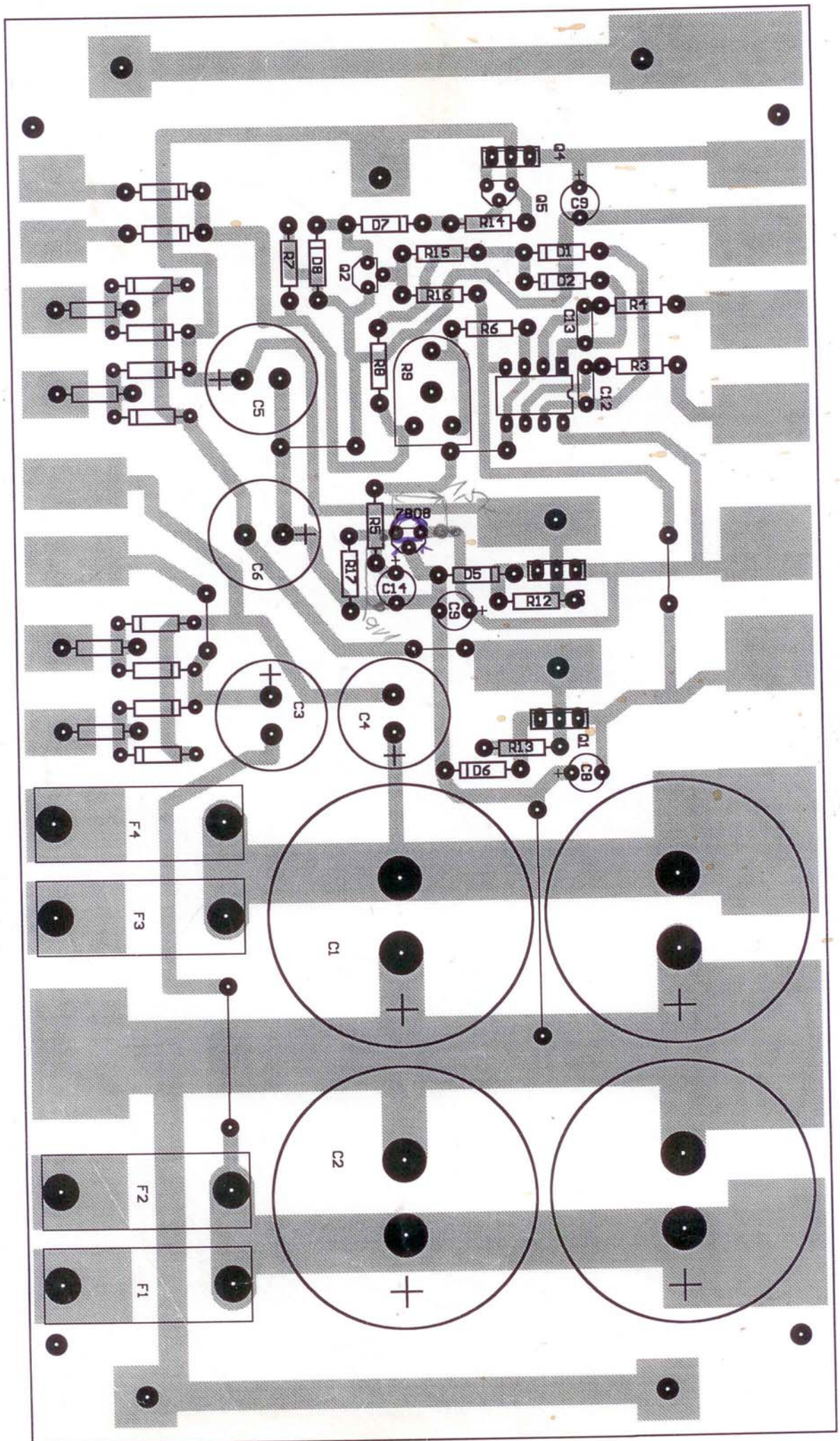
MPA 1200 - 1600

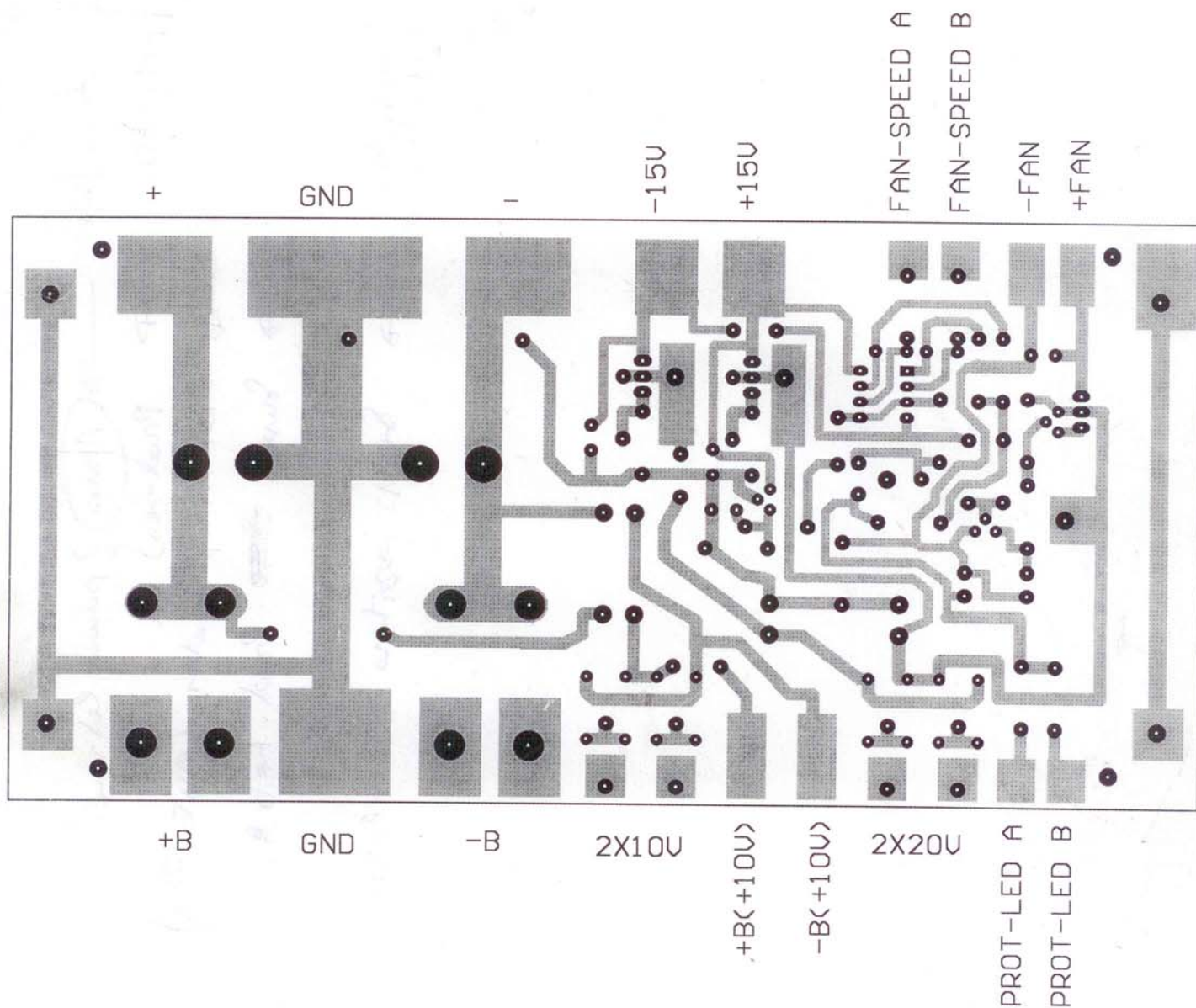


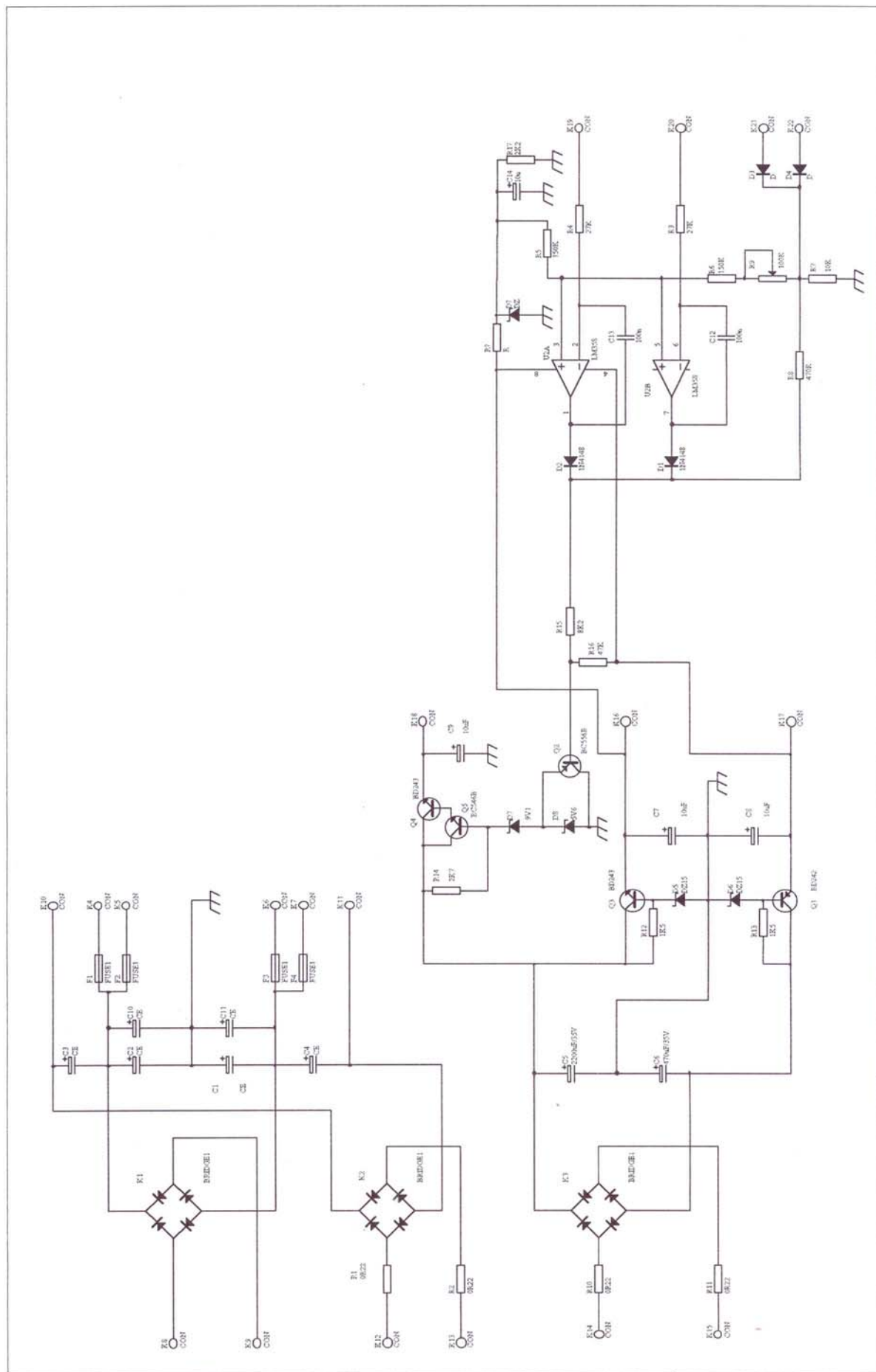


MPA 400-600

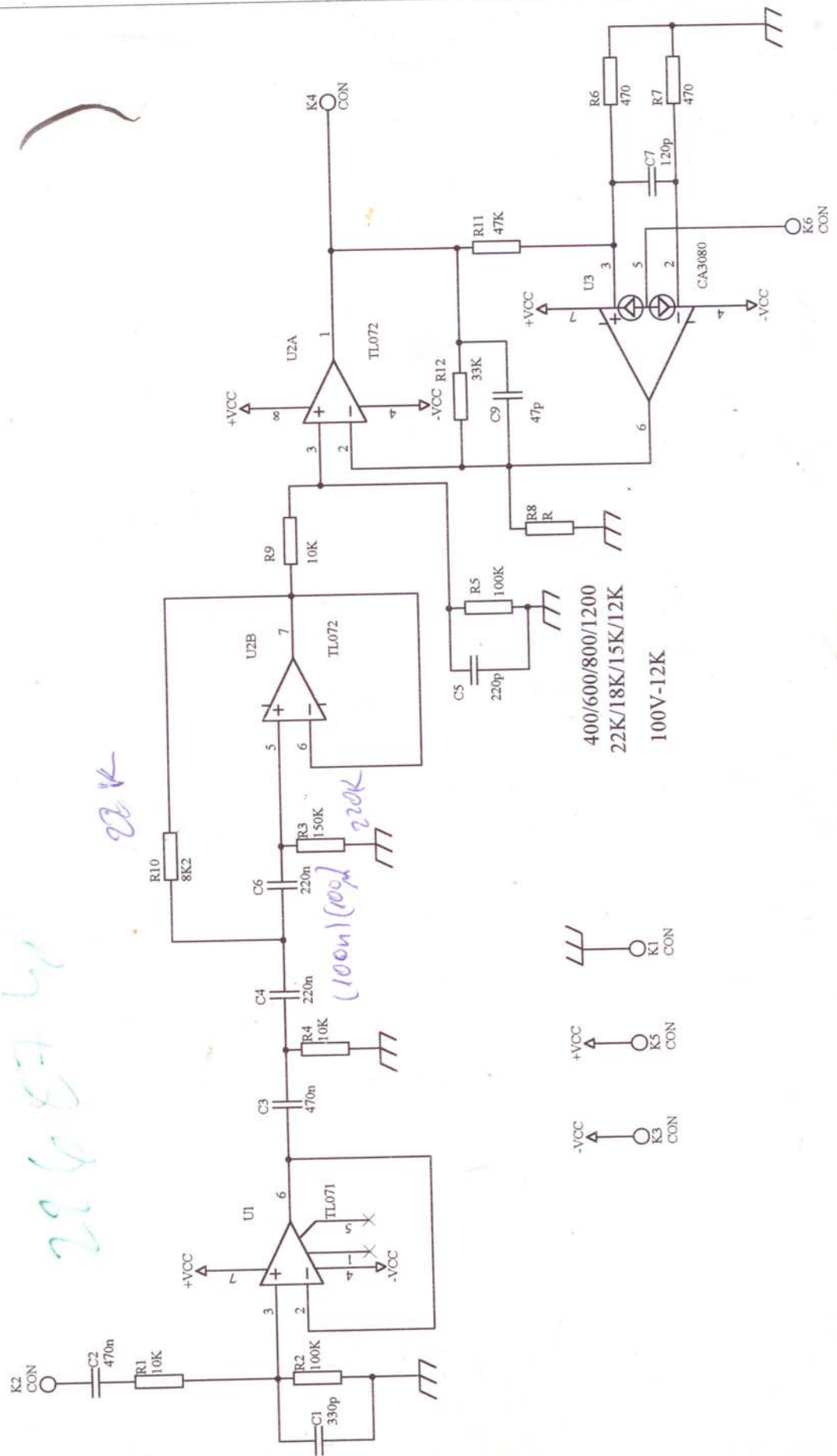
(POWER 603. PCB)







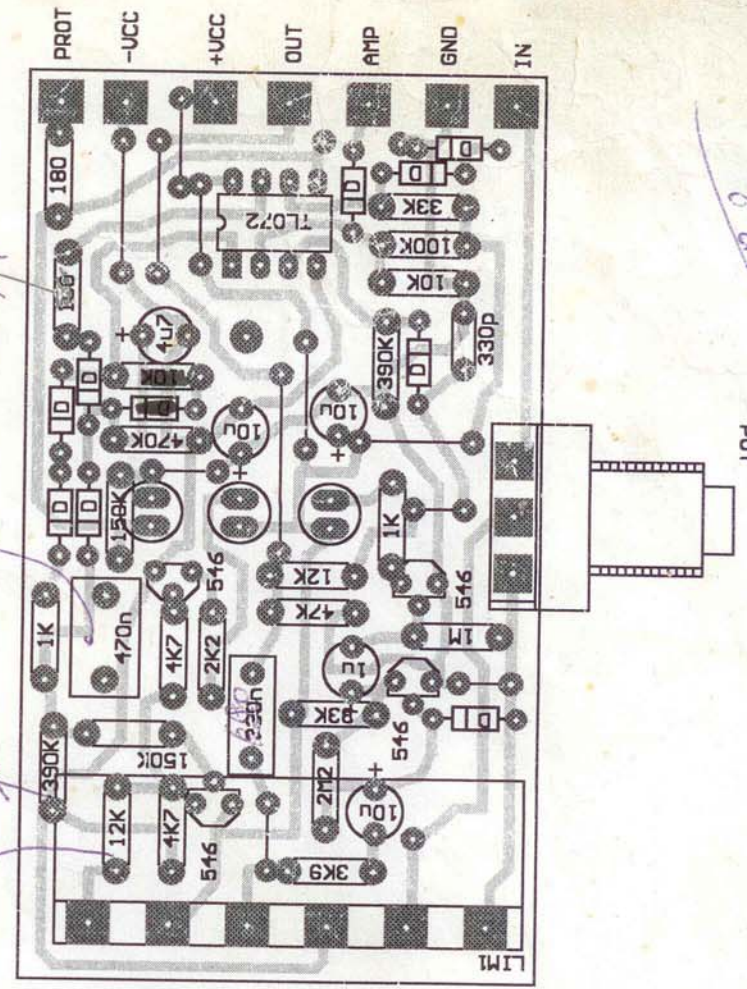
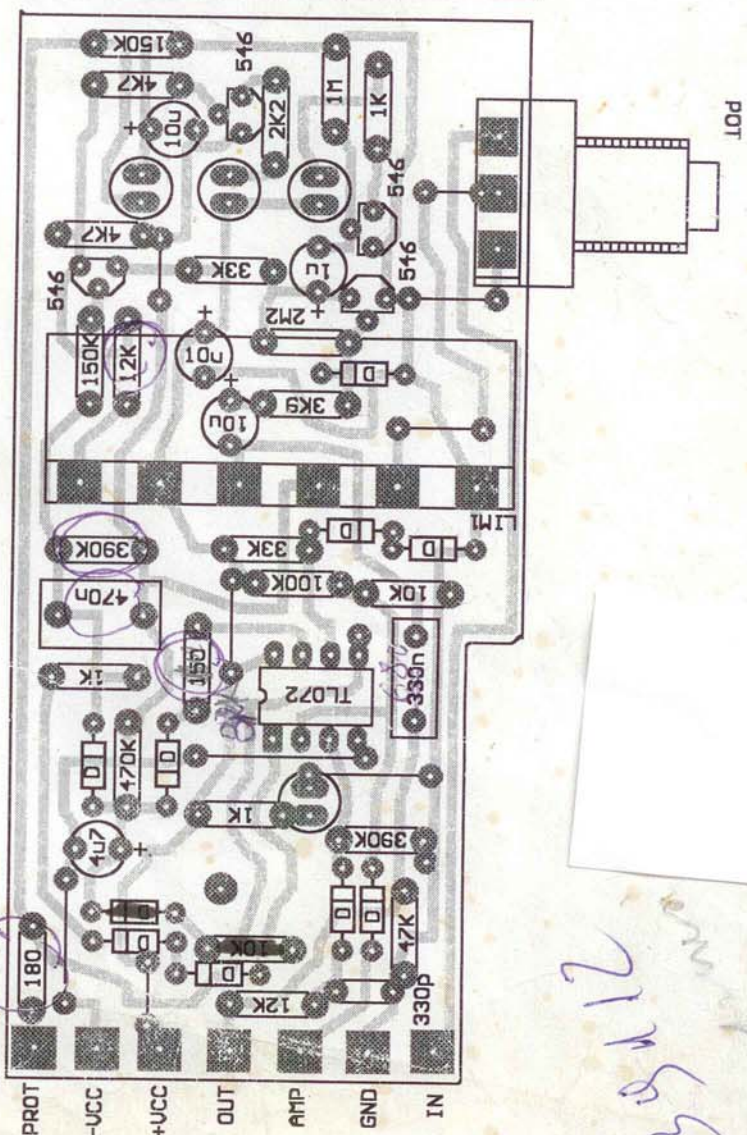
LIMITER+FILTER



OK - 06-2000

MPA LIMITER+LED

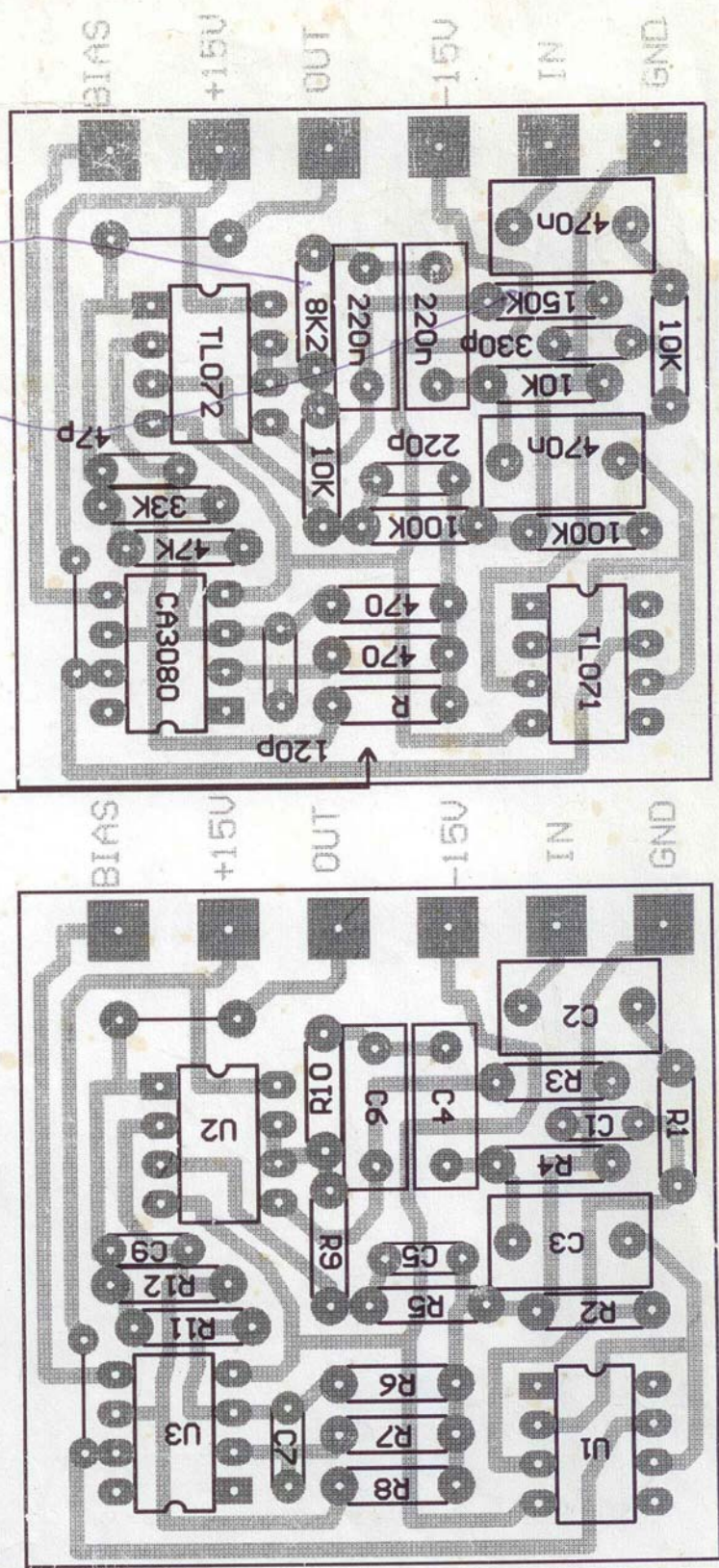
27K
330K
330nF
81K2



135x12

81463
229418

LIMITER+FILTER MODUL



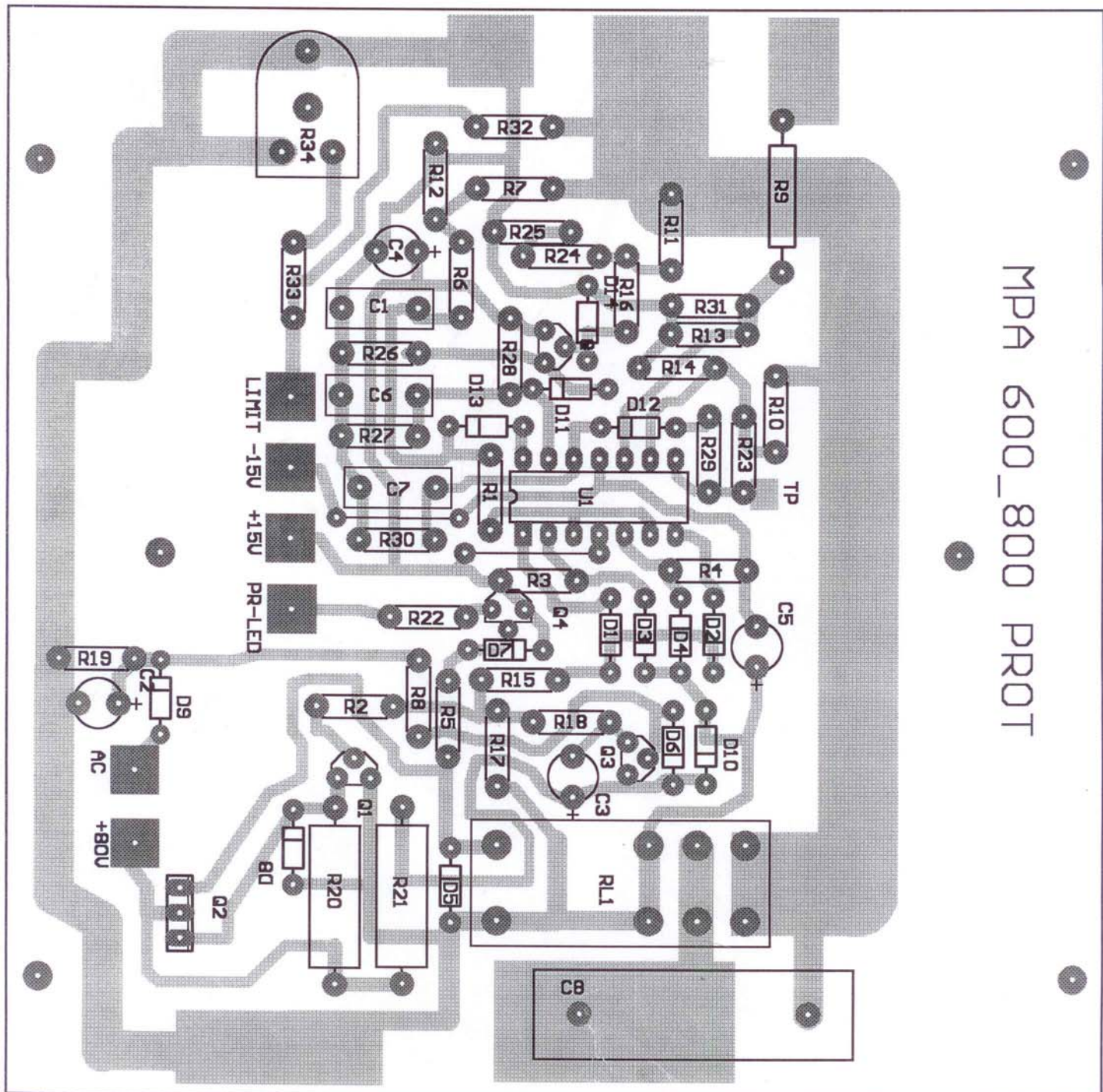
Handwritten notes and arrows pointing to components:

- TL072
- CA3080
- TL071
- 470n
- 150K
- 330p
- 10K
- 470n
- 100K
- 220p
- 100K
- 470
- 470
- R
- 120p
- 8K2
- 220n
- 220n
- 10K
- 33K
- 47K
- 47p
- R10-22K
- offset R3 - 220K
- ha C4-C6 - 100n

Component values and ranges:

- 400/600/800/1200
- 22K/18K/15K/12K/10K
- 100V-12K

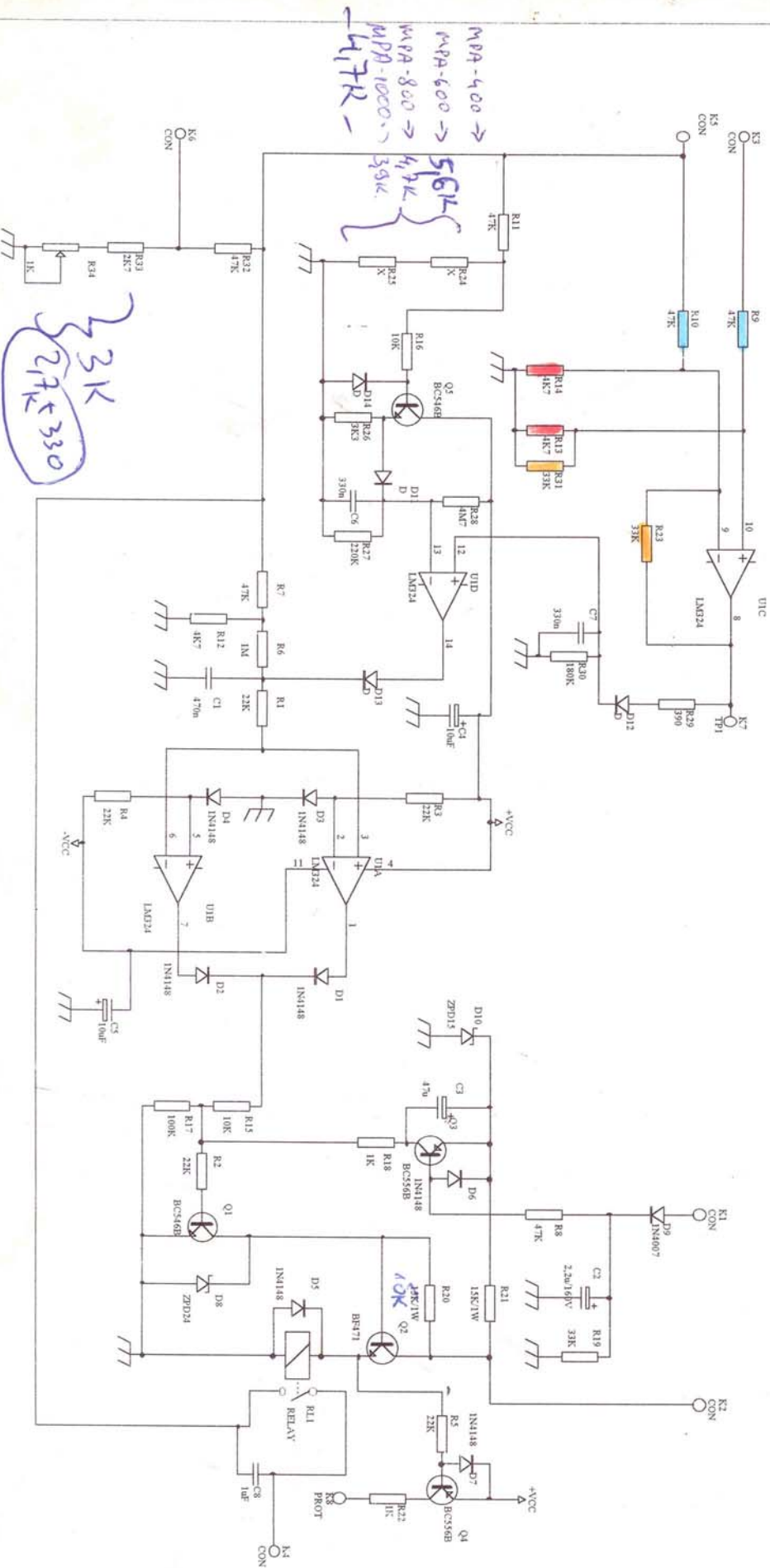
MPA 600_800 PROT



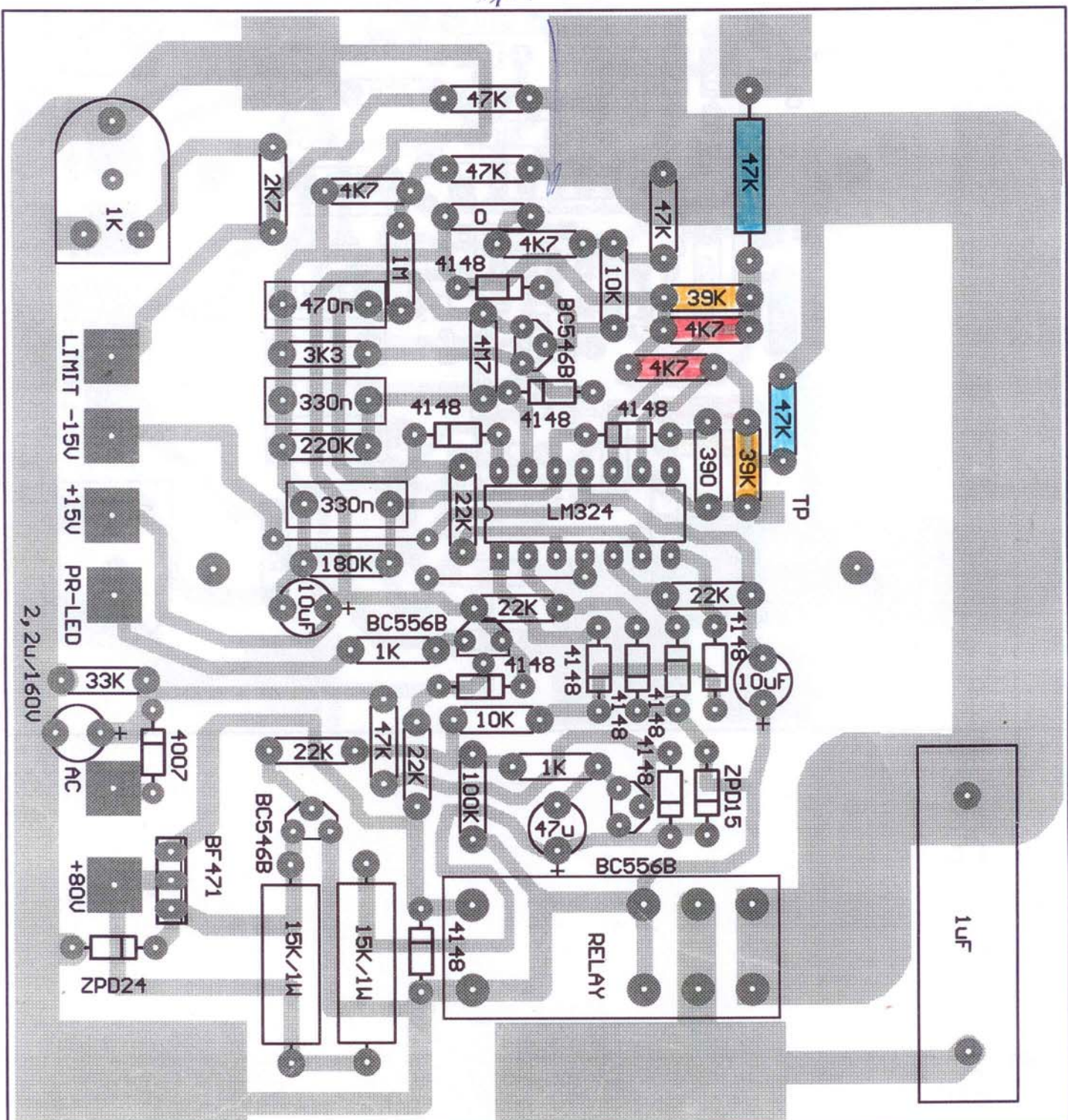
OK-2000 Jh

Ex-1

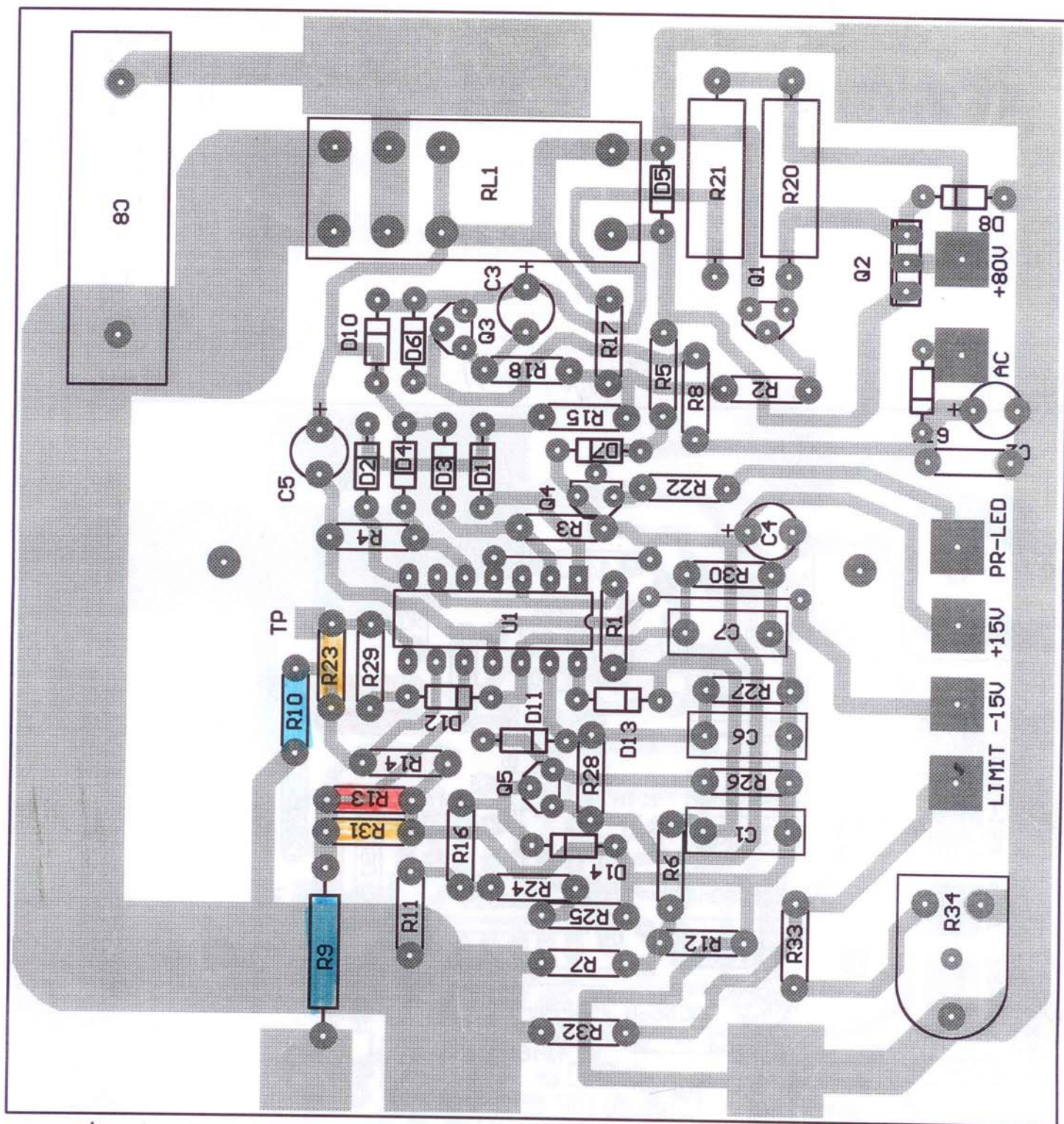
MPA 600_800-PROT



OK - 2000
FEX - 1



MPA1200-PROT



MPA 1200-PROT

