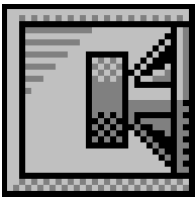


Custom Vented Box Design

By 1234, nexo



Box Properties

--Description--

Name:

Type: Vented Box

Shape: Prism, square

--Box Parameters--

Vb = 28.8 liters

Fb = 60 Hz

QL = 6.639

F3 = 57.07 Hz

Fill = heavy

--Vents--

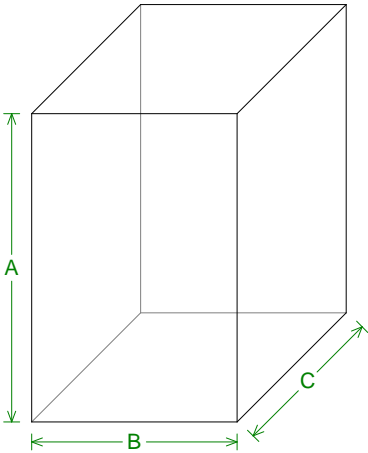
No. of Vents = 1

Vent shape = round

Vent ends = one flush

Dv = 70 mm

Lv = 29.16 mm



--External Dimensions--

A = 450 mm

B = 300 mm

C = 300 mm

--Internal Dimensions--

A = 414 mm

B = 264 mm

C = 264 mm

--Wall Thickness--

Front = 18 mm

Side = 18 mm

Driver Properties

--Description--

Name:

Type: Standard one-way driver

--Configuration--

No. of Drivers = 1

--Driver Parameters--

Fs = 53 Hz

Qms = 8.068

Vas = 41.42 liters

Xmax = 3 mm

Sd = 340 sq.cm

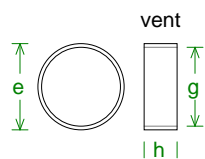
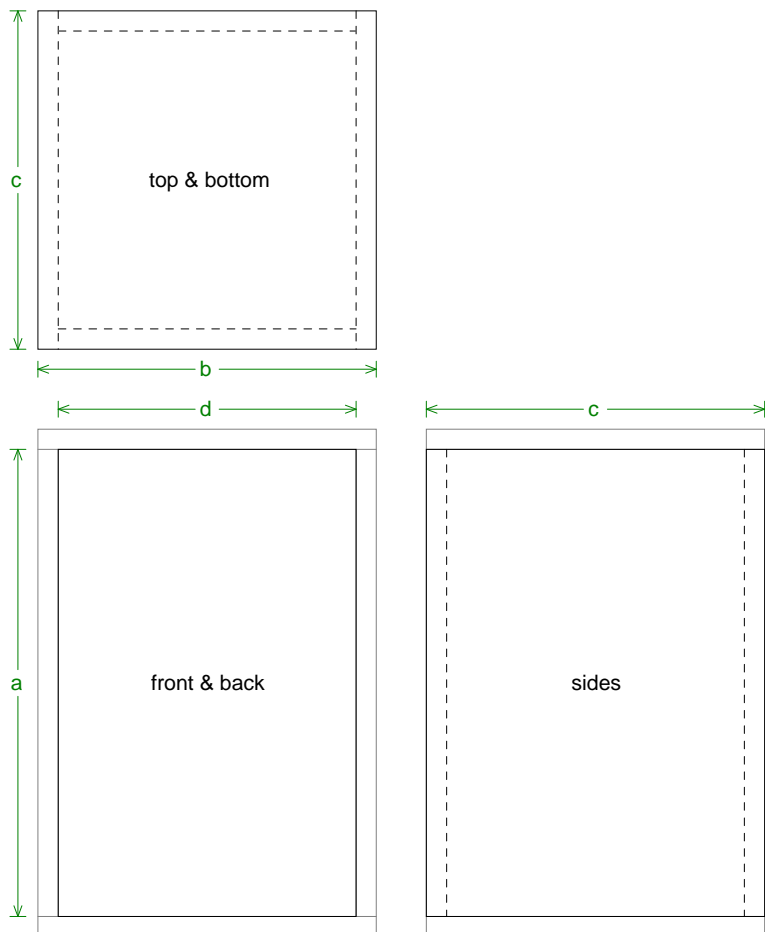
Qes = 0.572

Re = 6.6 ohms

Le = 0.98 mH

Z = 8 ohms

Pe = 200 watts



Box Parts

--Square Prism Box Parts--

- 1 Top, 1 Bottom: depth (c) = 300 mm
width (b) = 300, thickness = 18 mm
- 1 Front, 1 Back: height (a) = 414 mm
width (d) = 264, thickness = 18 mm
- 2 Sides: height (a) = 414 mm
depth (c) = 300, thickness = 18 mm

--Vent Parts--

- 1 Duct: outside diameter (e) = 76.35 mm
inside diameter (g) = 70 mm
length (h) = 29.16 mm

--Driver Mounting-- Mounting:



Wiring Diagram

