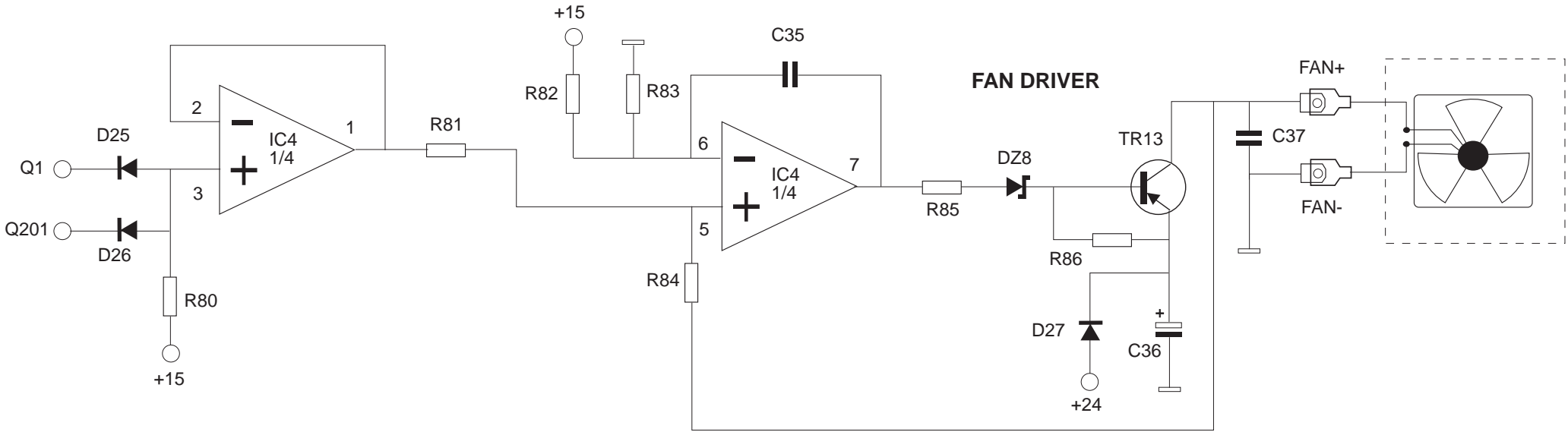
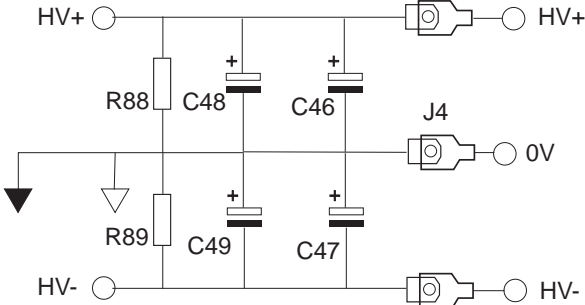
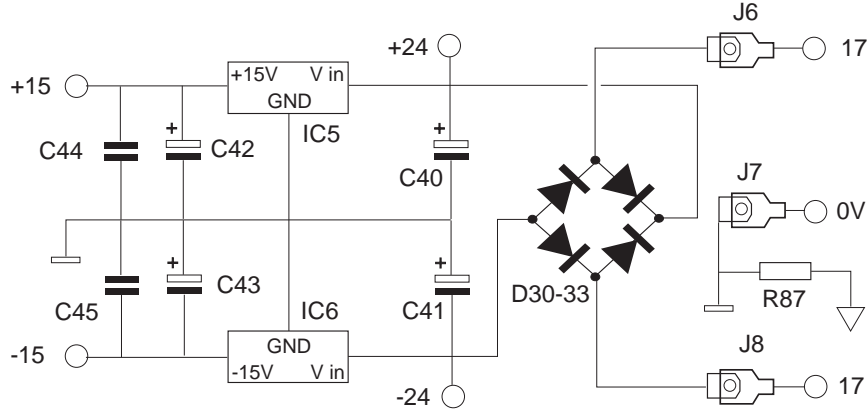


K series-98 (main PCB)

All parts on map 1 are common for both channels

Ch B components are twice to Ch A, with numeration starting from 200



	K5	K9	K12	K18	KQ
HV+/-	60	75	86	95	75
TX	TX5	TX9	TX12	TX18	TXQ
FS 601-2	5	6,3	8	10	8

NOTE:
KQ version are 2 K PCB, 2 input PCB, 2 V.I. PCB
All parts contained within dasched lines are not on main K PCB

ISSUE	DESCRIPTION	APPD.	DATE
	Discharge Resistor from Version 2.2		17/04/01

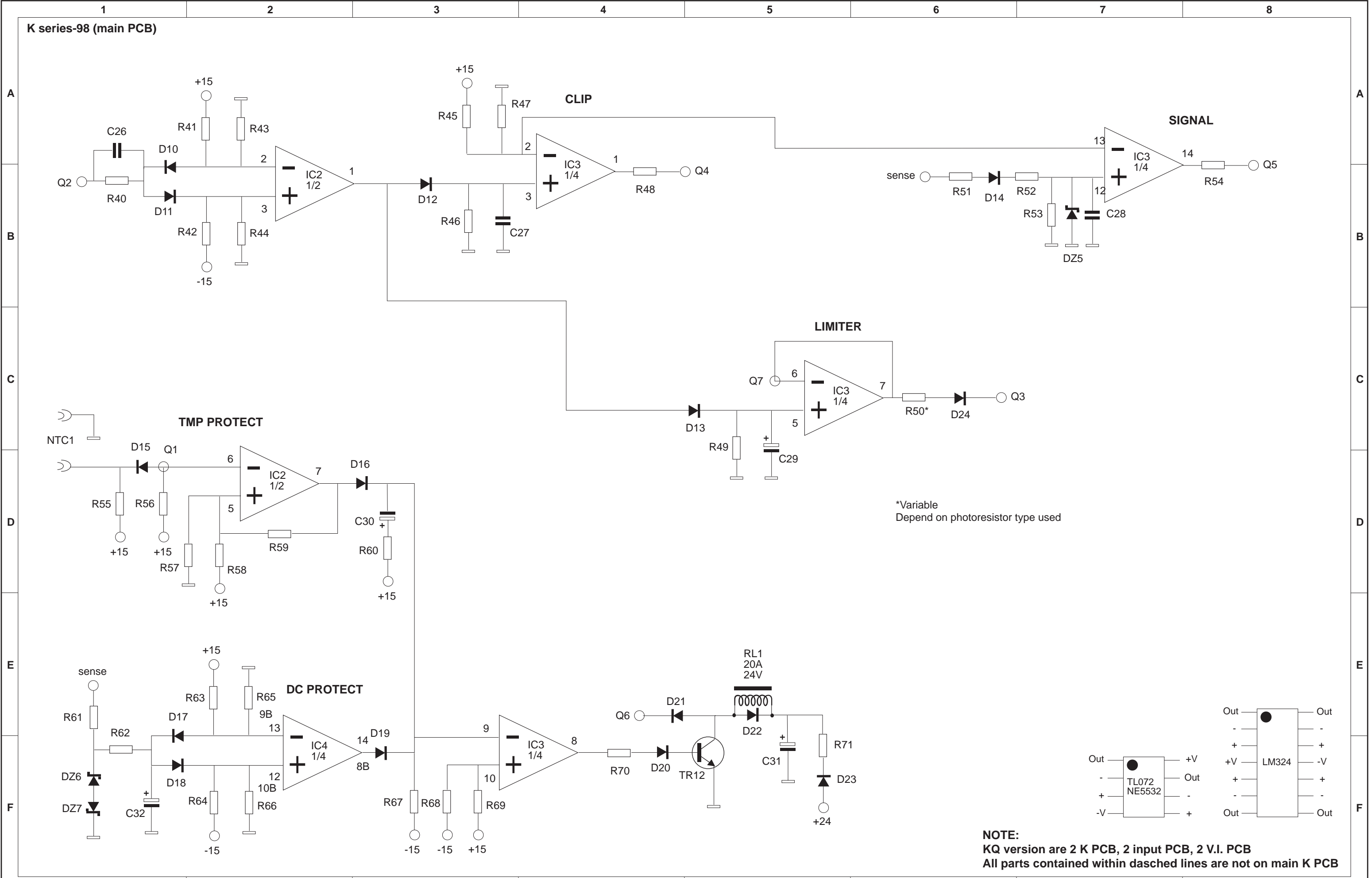



Galliate (NO) ITALY

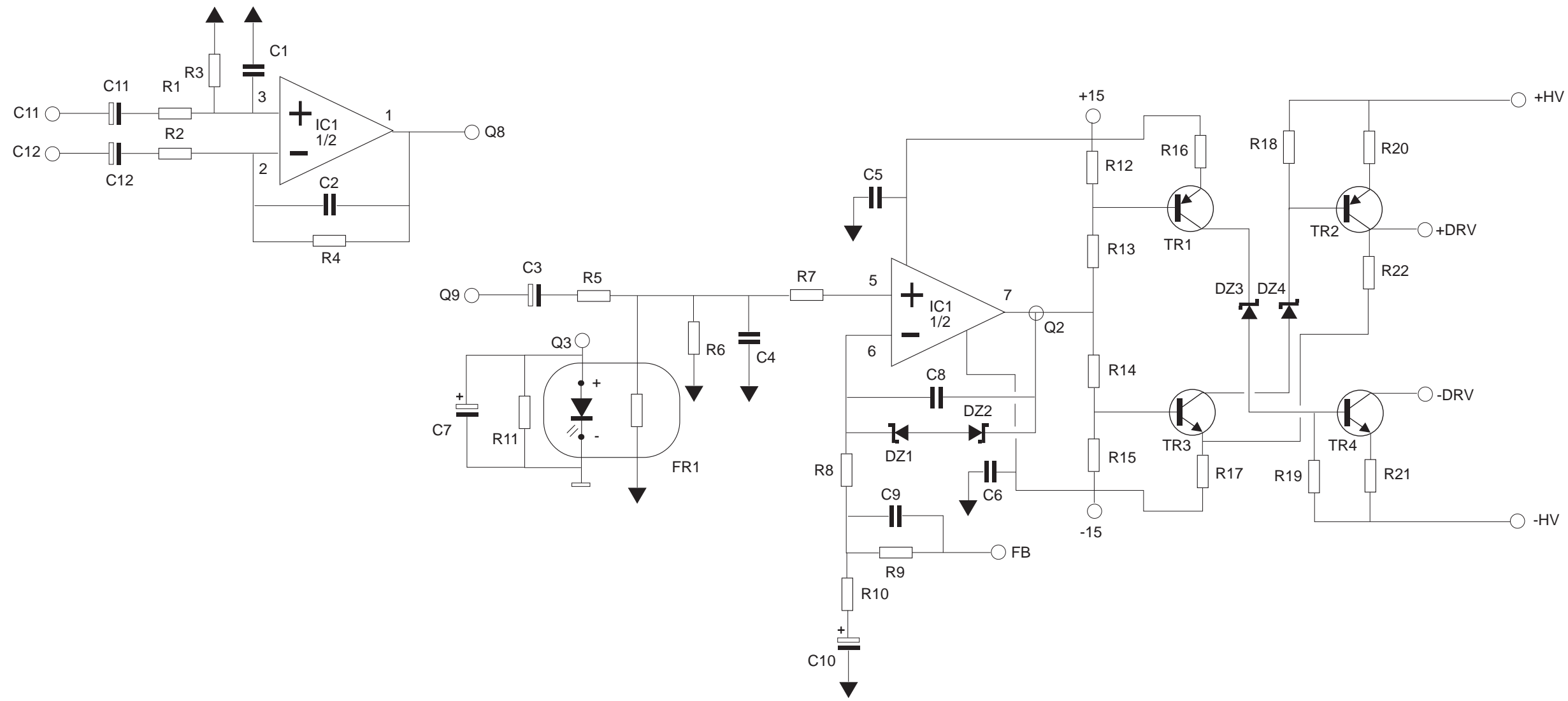




Diagramma K-98
power supply/Fan driver

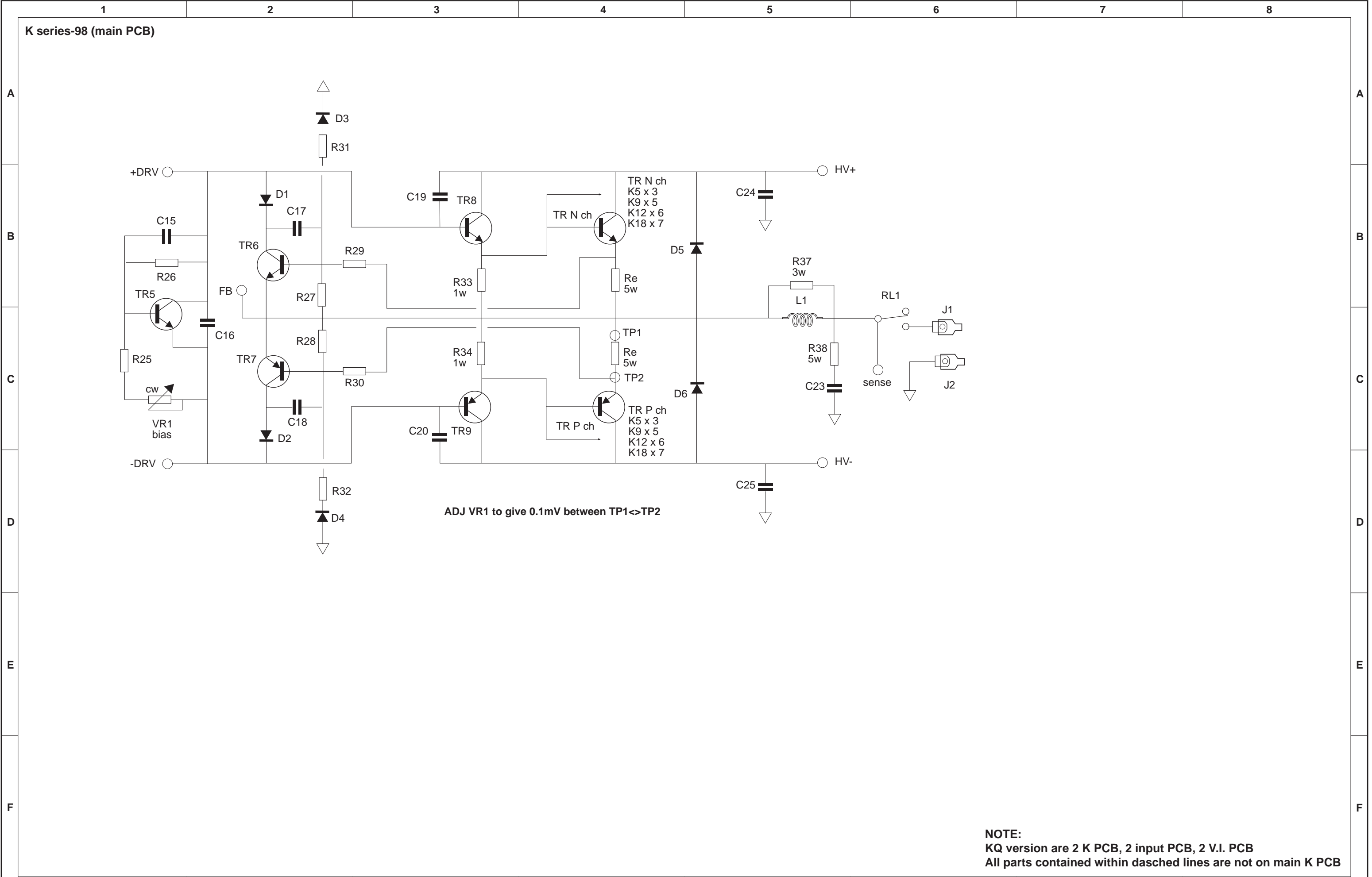
DRAWN	TRACED	CHECKED	APPROVED	DATE
C.A.				07/11/97
Dawning No. 1-5				


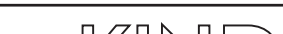


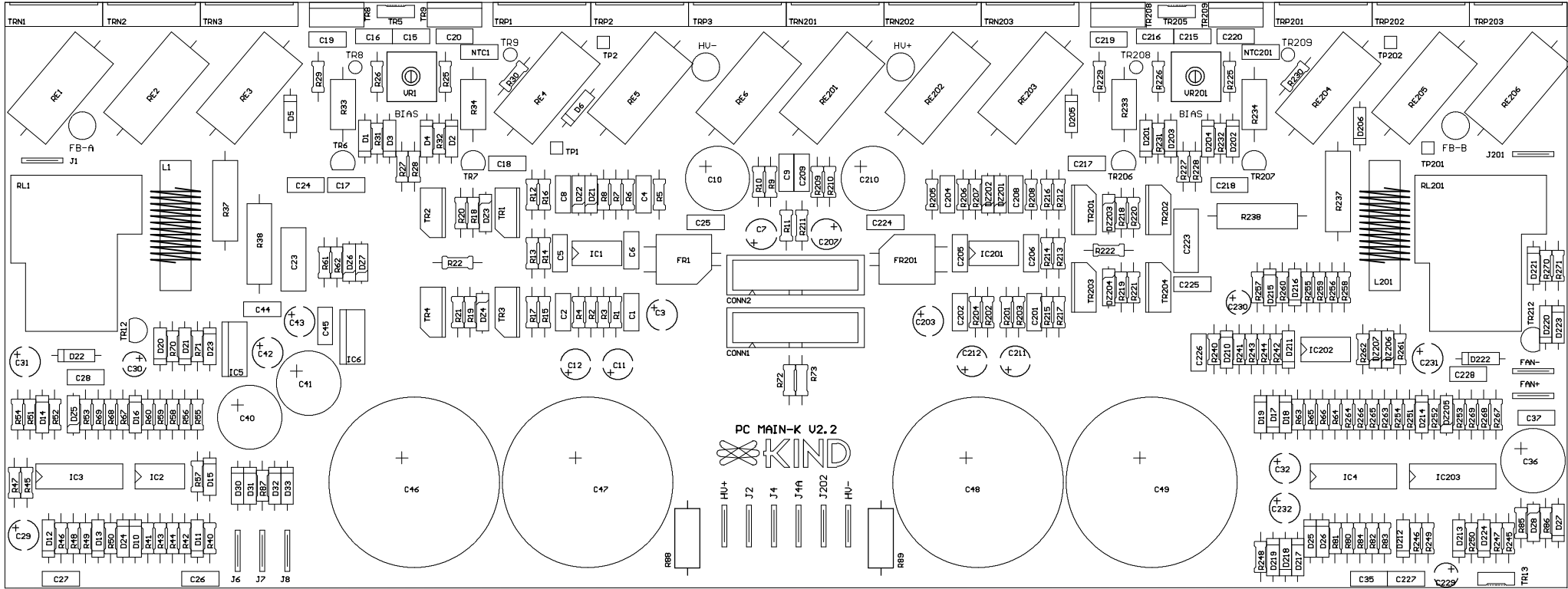
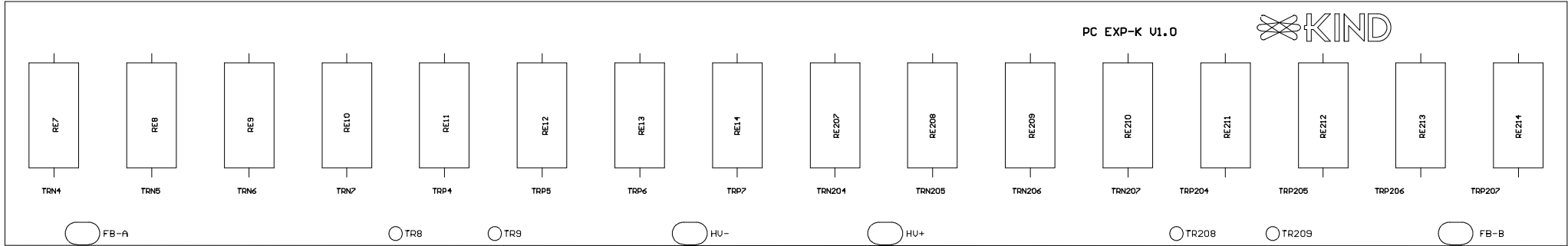
ISSUE	DESCRIPTION	APPD.	DATE	<div><div>AUDIO & AUDIO</div><div>G R O U P</div><div>Galliate (NO) ITALY</div></div>		<div><div></div><div>Diagramma K-98</div><div>Part No. DC/TMP protect/Visual Ind</div></div>		DRAWN	TRACED	CHECKED	APPROVED	DATE
								C.A.				31/12/97
								Drawing No. 3-5				

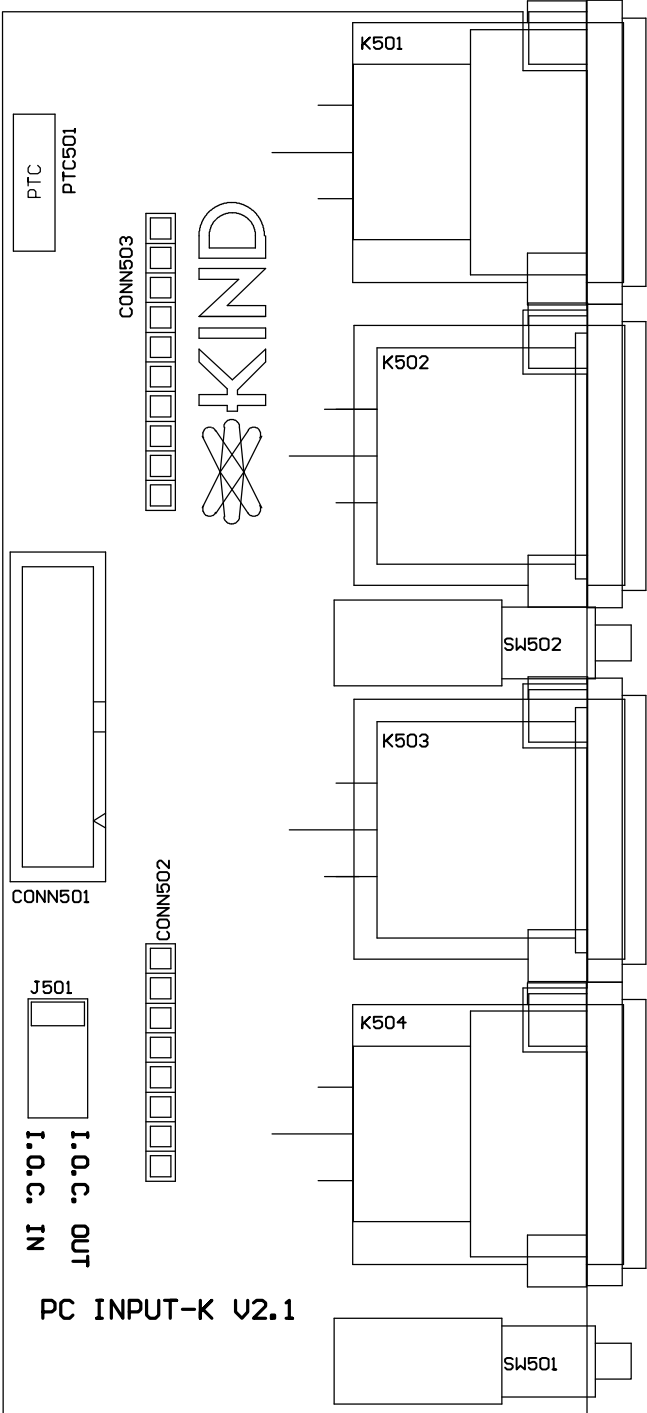


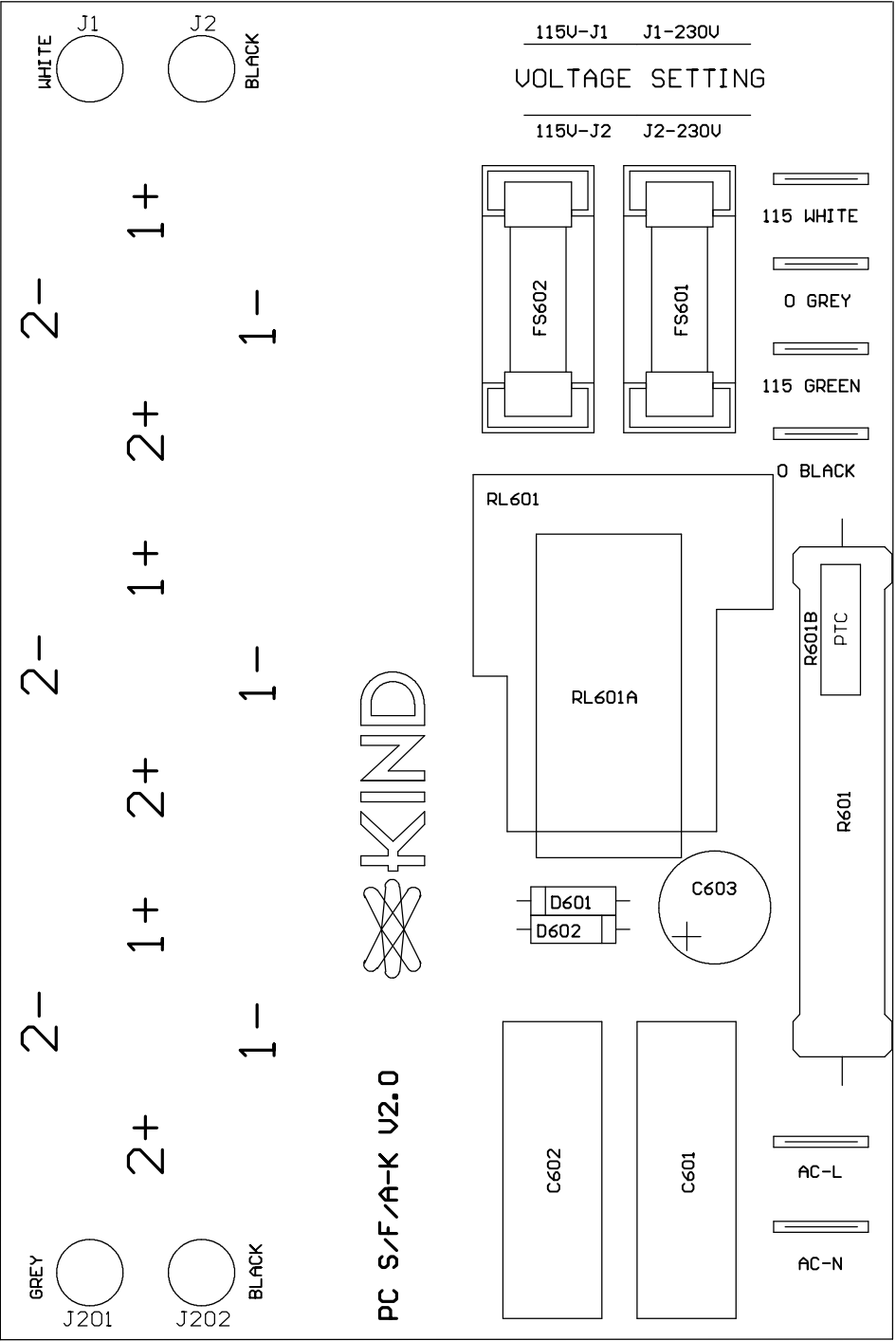
1		2		3		4		5		6		7		8	
ISSUE	DESCRIPTION	APPD.	DATE	<div><p>AUDIO & AUDIO G R O U P</p><p>Galliate (NO) ITALY</p></div>		<div><p>Part No. KIND Diagramma K-98 Input/Driver stage</p></div>		DRAWN	TRACED	CHECKED	APPROVED	DATE			
								C.A.				31/12/97			
								Drawing No. 4-5							
								Part No.							

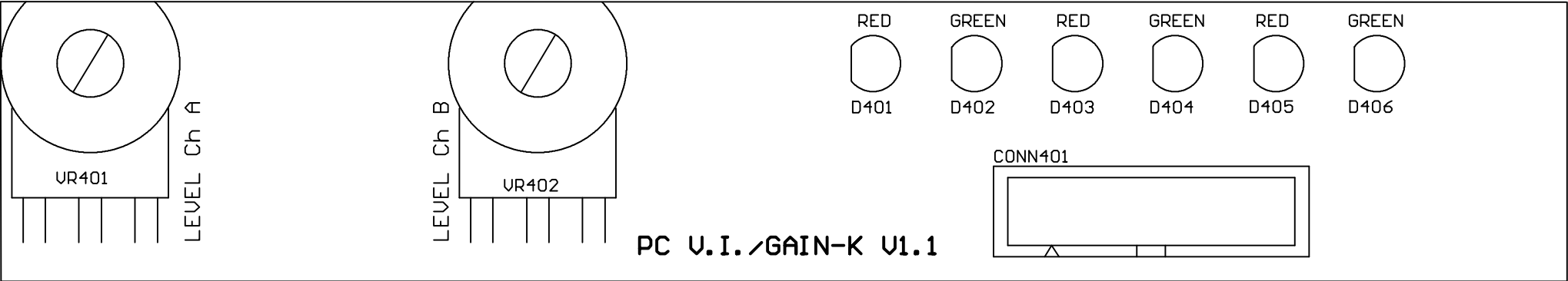


1		2		3		4		5		6		7		8	
ISSUE	DESCRIPTION	APPD.	DATE	<div> Galliate (NO) ITALY</div>		<div> Diagramma K-98 Out stage/I limit</div> <div>Part No.</div>		DRAWN	TRACED	CHECKED	APPROVED	DATE			
												07/11/97			
								Drawing No. 5-5							









MAIN PCB-K V2.2

Resistors -----1% - 1/4W

R1, R2, R5, R9, R62, R68-----20K 1%

R3, R4 / K5 (1.2V sensitivity) -----18K 1%

R3, R4 / K9 / KQ (1.2V sensitivity) -----23K 1%

R3, R4 / K12 (1.2V sensitivity)-----27K 1%

R3, R4 / K18 (1.2V sensitivity)-----31K 1%

R6, R11, R59, R82* -----47K

R7, R8, -----100R

R10 -----470R

R12-17, R48, R54, R73* -----1K5

R18, R19, R25 -----220R

R20, R21 -----68R

R22 -----68K

R26 -----680R

R27, R28 -----N/C

R29, R30 / K5, KQ-----1K

R29, R30 / K9 -----560R

R29, R30 / K12 -----470R

R29, R30 / K18 -----330R

R31, R32, R57 -----6K8

R40 / K5 - K9 - KQ-----76K

R40 / K12 - K18 -----91K

R41, R42, R67, R63, R64, R80*-----470K

R43, R44, R65, R66, -----2K2

R45, R46, R49, R52, R53, R69, R83* -----100K

R47, R51, R60-----1K

R50** (with Vactec-Vactrol) -----9K1

R55, R58, R70, R86*-----10K

R56-----220K

R61 -----33K

R71 -----150R

R72 -----3K3

R81* -----22K

R84* -----150K

R85* -----4K7

R87* -----10R

Resistors -----5% - 1W

R33, R34-----10R

R88*, R89*-----10K

Resistors -----5% - 3W

R37 -----2R7

R38 -----10R

Resistors -----10% - 5W

Re -----R0,33

Capacitors

C1, C2 -----22pF Cer

C3, C11, C12 -----4,7µF/25 NP

C4, C15, C26 -----100pF/500 Cer

C5, C6, C16, C27, C28, C35*, C37* -----100n/50Cer-Met P5

C17, C18, C24, C25, C44*, C45* -----100n/100 P5

C7 -----10µF/25

C8-----47pF Cer

C9-----150pF Cer

C10, C36*, C40*, C41* -----1000µF/35

C19, C20 -----470pF/500 Cer

C23-----33n/250 P10

C29, C32, C42*, C43*-----47µF/25

C30 -----1µF/63

C31-----100µF/25

C46*-49* K5-9 ----- (6800µF/80) 4700µF/100 SNAP-IN

C46*-49* K12-18-----10000µF/100 SNAP-IN

NOTE:*componenti da considerare singoli sul main PCB, i componenti del Ch B partono con numerazione da 200

**Varia a seconda del Fotoresistor usato (vedi note sullo schema elettrico)

Semiconductors

IC1	NE5532
IC2	TL072
IC3, IC4*	LM324
IC5*	7815
IC6*	7915
DZ1, DZ2, DZ5, DZ6, DZ7	5V6 1/2W Z
DZ3, DZ4	24V 1/2W Z
DZ8*	15V 1/2W Z
D1, D2, D10-13, D16-24	1N4148
D3-6, D14, D27*, D30*-33*	1N4004
D15, D25*, D26*	BAT46
BR1	(on chassis) KBPC3506
FR1	VTL5C3
TR1, TR2	BF872
TR3, TR4	BF871
TR5	BD139
TR6, TR12	BC547
TR7	BC557
TR8	MJE15032
TR9	MJE15033
TR13*	BD140
TR-N	2SC5200
TR-P	2SA1943

Miscellaneous

VR1	100R Trim Pot
NTC1	47K screw type
L1	INDUCTOR 2.5μH
J1*-13*	FASTON PCB
CONN1, CONN2	STRIP8PD
RL1	30A/24V
ZOCC 8P	n 4
ZOCC 14P	n 3

INPUT PCB-K V2.1

Miscellaneous

K501, K504	XLR female
K502, K503	XLR male
CONN501	STRIP8PD
SW501, SW502	PUSCH SWITCH 2P
J501	STRIP4PD
PTC501	10R

V.I./GAIN PCB-K V1.1

Semiconductors

D401, D403, D405	LED ø5 RED
D402, D404, D406	LED ø5 GREEN

Miscellaneous

CONN401	IDC16P-PCB
VR401, VR402	20K LOG POT/H-41PC

S/F/A PCB-K V2.0

Resistors

	10% - 10W
R601	NOT USED
R601B	PTC10R

Capacitors

C601	330n/275-X2 P22-27
C602	2,2μF/250P22-27
C603	470μF/25

Semiconductors

D601, D602	1N4004
------------	--------

Miscellaneous

K601-603	SPEAKON PCB
FS601, FS602 K5	FUSE HOLDER with T5A
FS601, FS602 K9	FUSE HOLDER with T6.3A
FS601, FS602 K12	FUSE HOLDER with T8A
FS601, FS602 K18	FUSE HOLDER with T10A
FS601, FS602 KQ	FUSE HOLDER with T10A
RL601	16A/24V
JUMPER (main voltege set)	n 2
J	FASTON PCB n 6