

# AUDIO

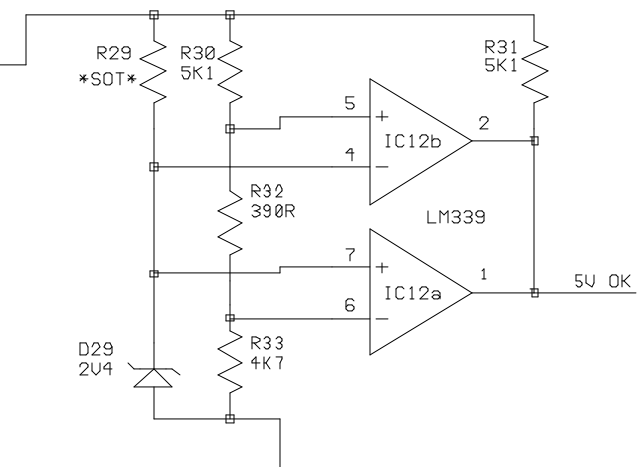
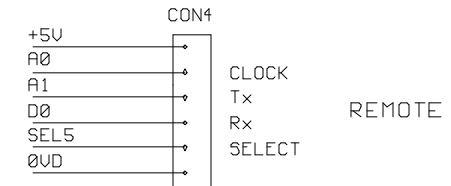
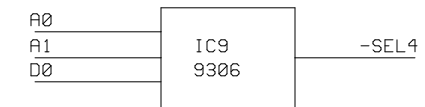
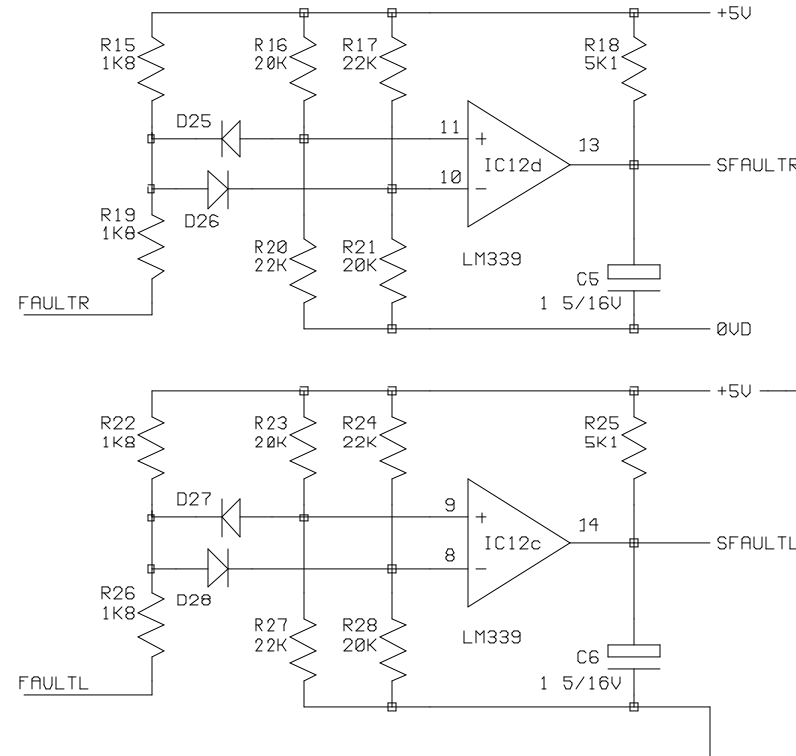
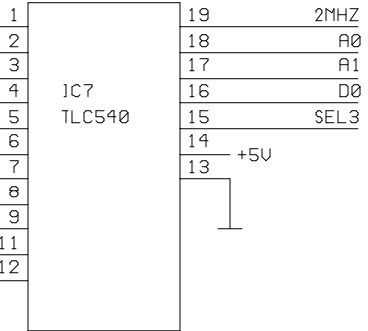
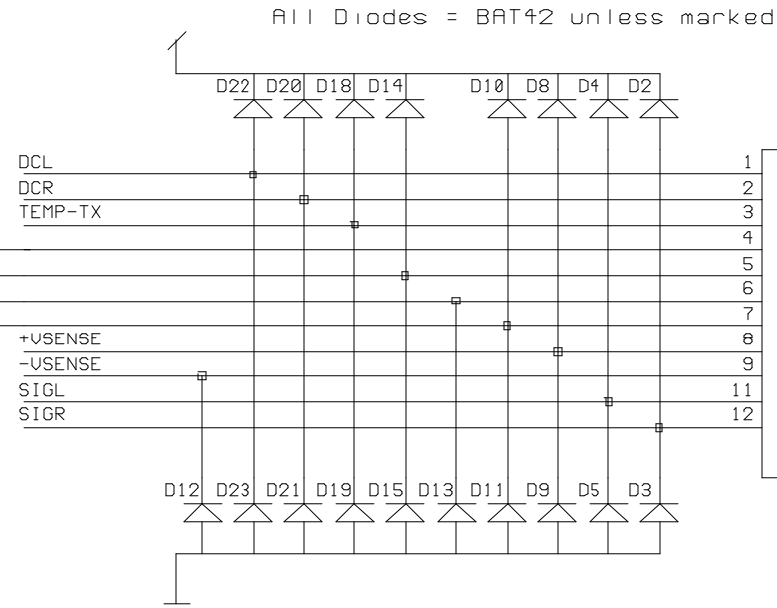
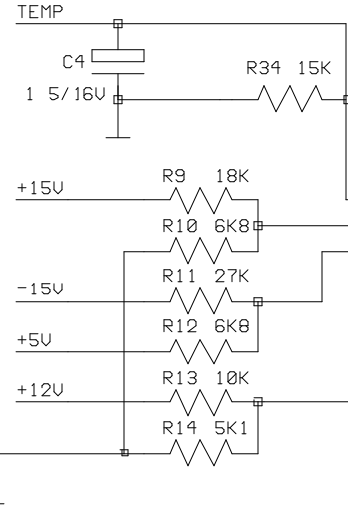
DACL3	1	2	DACL4
DACL2	3	4	DACL5
DACL1	5	6	DACL6
DACL0	7	8	DACL7
0VD	9	10	0VD
-15V	11	12	2 OHM
+15V	13	14	+12V
FAULT	15	16	
DCL	17	18	OUTRLYL
SIGL	19	20	TEMP
TEMP	21	22	SIGR
OUTRLYR	23	24	DCR
+12V	25	26	FAULTR
BRIDGED	29	30	-15V
0VD	31	32	0VD
DACR7	33	34	DACR0
DACR6	35	36	DACR1
DACR5	37	38	DACR2
DACR4	39	40	DACR3

# DISPLAY

BRIDGED	1	2	MUTR-LED
ROTARYBR	3	4	MUTR
GANGED	5	6	ROTARYAR
DISPLAYR7	7	8	DISPLAYR6
DISPLAYR5	9	10	DISPLAYR4
DISPLAYR3	11	12	DISPLAYR2
DISPLAYR1	13	14	DISPLAYR0
LIMITR	15	16	FAULTR
+5V	17	18	+5V
PA3	19	20	TEMP-LED
0VD	21	22	0VD
0VD	23	24	0VD
LIMITL	25	26	FAULTL
DISPLAYL6	27	28	DISPLAYL7
DISPLAYL4	29	30	DISPLAYL5
DISPLAYL2	31	32	DISPLAYL3
DISPLAYL0	33	34	DISPLAYL1
ROTARYAL	35	36	ROTARYBL
ROTARYAL	37	38	MUTEL
2 OHM-LED	39	40	MUTEL-LED

# POWER

FAN1	1	2	1NR
FAN2	3	4	PSU1
FAN3	5	6	PSU2
+USENSE	7	8	
0VD	9	10	TEMP-TX
+5V	11	12	-USENSE
+12V	13	14	+15V
	15	16	-15V



De-coupling Capacitors  
C07-C18 = 0.1 mfd MLCs  
C19 = 10.0 mfd Tantalum

Date 15 June 1997

MC<sup>2</sup> AUDIO

MC 650/450 PROCESSOR PCB

Dwg No PCB6034/2

Sheet 1 of 2