
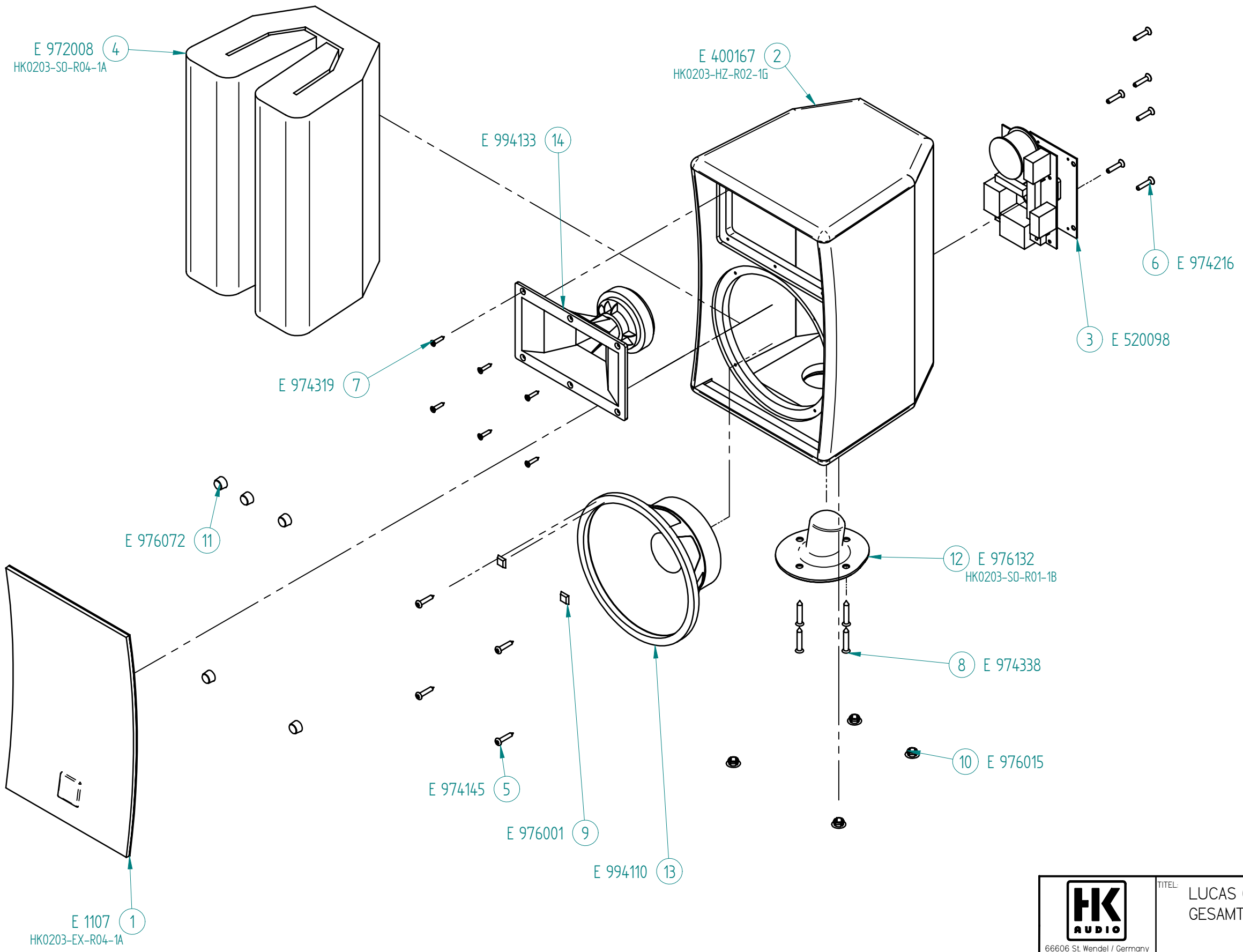



INDEX	ÄNDERUNG	ZEICHNER


		TITEL: LUCAS 600 BASS GESAMT	
66606 St. Wendel / Germany			
ZEICHNUNGS-NR.: HK0203-EX-R03-1A		VERSION: I	REVISION: A
ERSTELLT VON: C. LORIS		AM: 19.03.04	BLATT: 1/2
GEPRÜFT/ FREIGEgeben VON: KLAUS BIRSTER		AM: 23.03.04	BLÄTTER
WERKSTOFF:		OBERFLÄCHE:	
DATEINAME: HK0203-EX-R03-1A-BASS-GESAMT			




INDEX	ÄNDERUNG	ZEICHNER


		TITEL: LUCAS 600 TOP GESAMT	
66606 St. Wendel / Germany			
ZEICHNUNGS-NR. HK0203-EX-R05-1A		VERSION: I	REVISION: A
ERSTELLT VON: C. LORIS		AM: 22.03.04	BLATT: 1/2
GEPRÜFT/ FREIGEgeben VON: KLAUS BIRSTER		AM: 23.03.04	BLÄTTER
WERKSTOFF:		OBERFLÄCHE:	
DATEINAME: HK0203-EX-R05-1A-BASS-GESAMT			


L.U.C.A.S 600 Sub

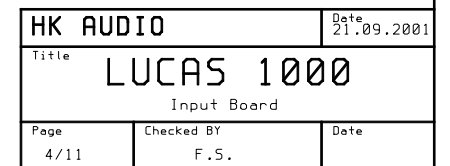
	Part No.	Description	Quantity
	E400166	Speaker housing Lucas 600 Subwoofer	1
	E976097	Insert handle	2
	E976009	Rubber foot 38 mm	4
	E1108	Frontgrille Lucas 600 Subwoofer	1
	E970611	Protective frame for speaker	1
	E994162	12" Speaker B&C 12 pz 32 8 ohms	1
	E502142	Elektronic Chassis Lucas 600, 230 V	1

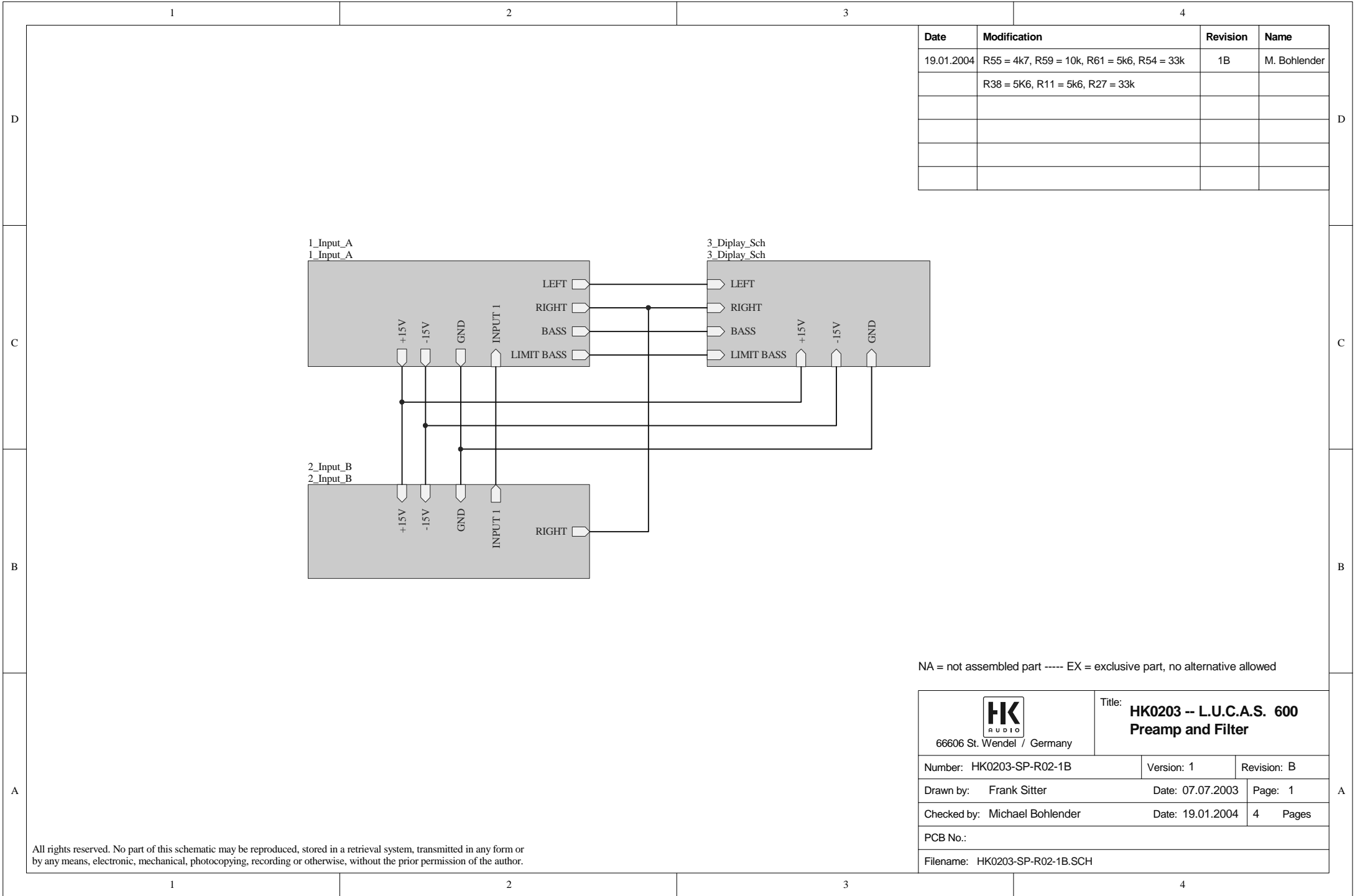
	Art. No.	Artikel	Stückzahl
	E400166	Leergehäuse Lucas 600 Subwoofer	1
	E976097	Kunststoff Schalengriff	2
	E976009	Gummifuß 38 mm	4
	E1108	Frontgitter Lucas 600 Subwoofer	1
	E970611	Schutzbügel für Lautsprecher	1
	E994162	12" Speaker B&C 12 pz 32 8 ohms	1
	E502142	Elektronic Chassis Lucas 600, 230 V	1

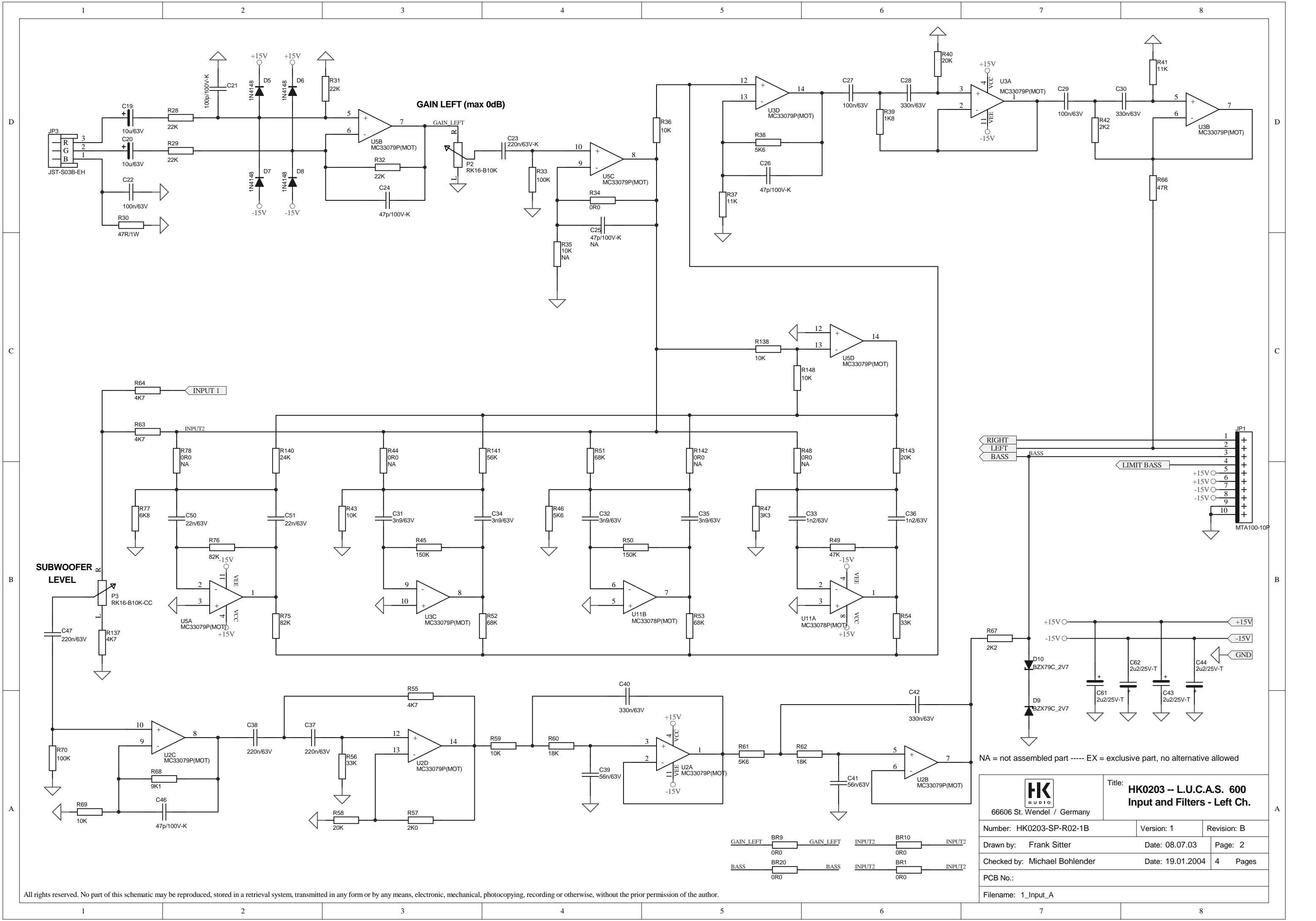
L.U.C.A.S 600 Satellite

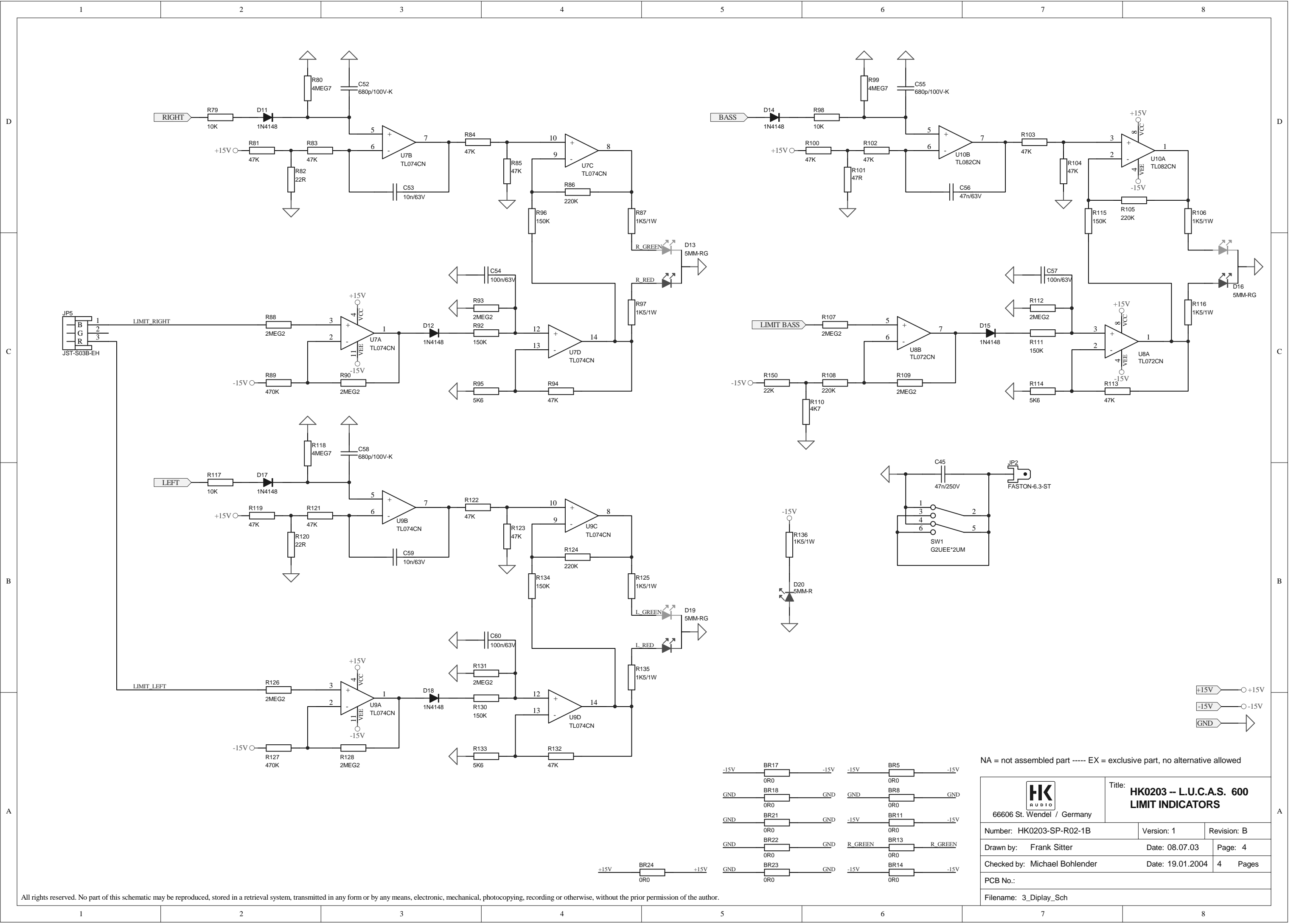
	Part No.	Description	Quantity
	E400167	Speaker housing Lucas 600 Satellite	1
	E1107	Frontgrille Lucas 600 Satellite	1
	E976132	HK AUDIO MonoTilt	1
	E520098	Crossover Lucas 600 Satellite	1
	E994110	8" Speaker EM 8326, 4 ohms	1
	E994133	Horn with driver EAPT 150	1
	E994146	Diphragm for EAPT 150	1

	Art. No.	Artikel	Stückzahl
	E400167	Leergehäuse Lucas 600 Satellite	1
	E1107	Frontgitter Lucas 600 Satellite	1
	E976132	HK AUDIO MonoTilt	1
	E520098	Frequenzweiche Lucas 600 Satellite	1
	E994110	8" Speaker EM 8326, 4 ohms	1
	E994133	Horn mit Treiber EAPT 150	1
	E994146	Schwingspule EAPT 150	1

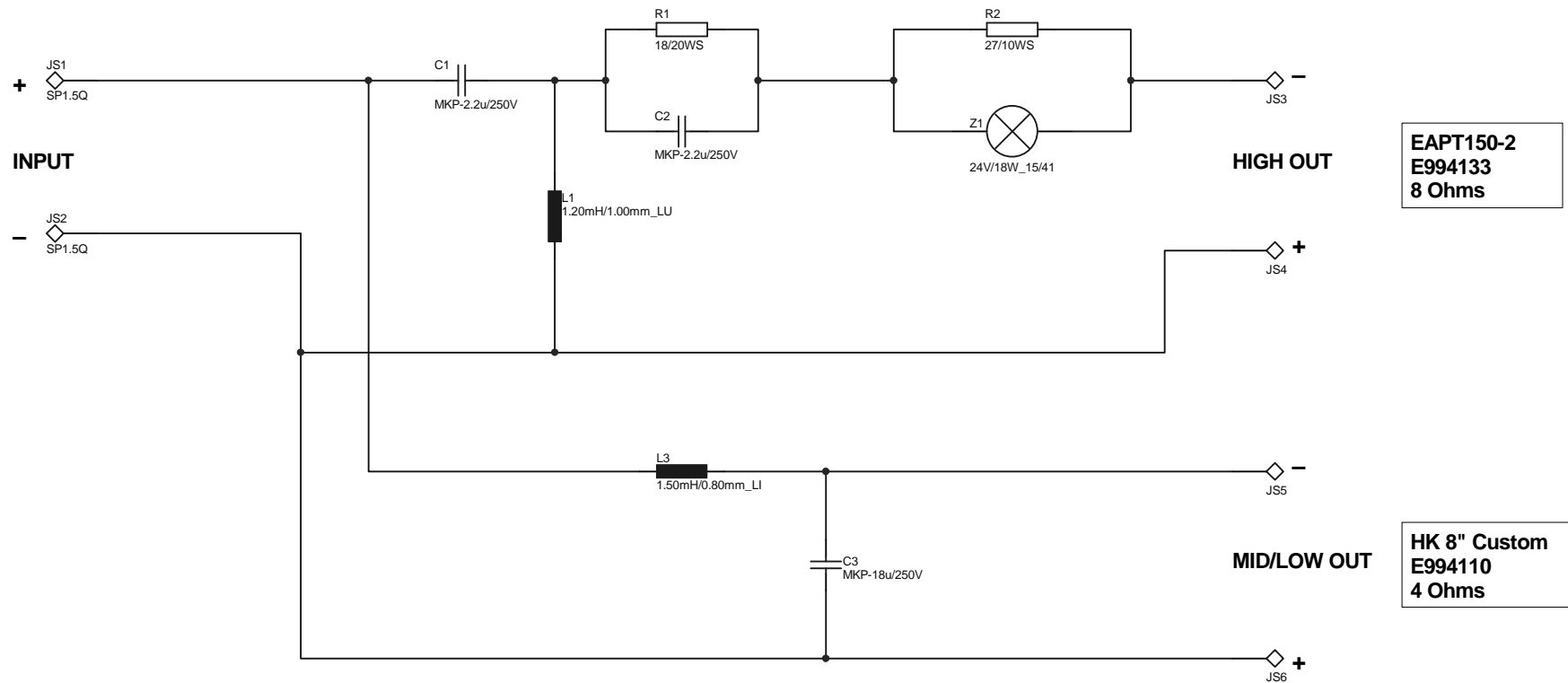









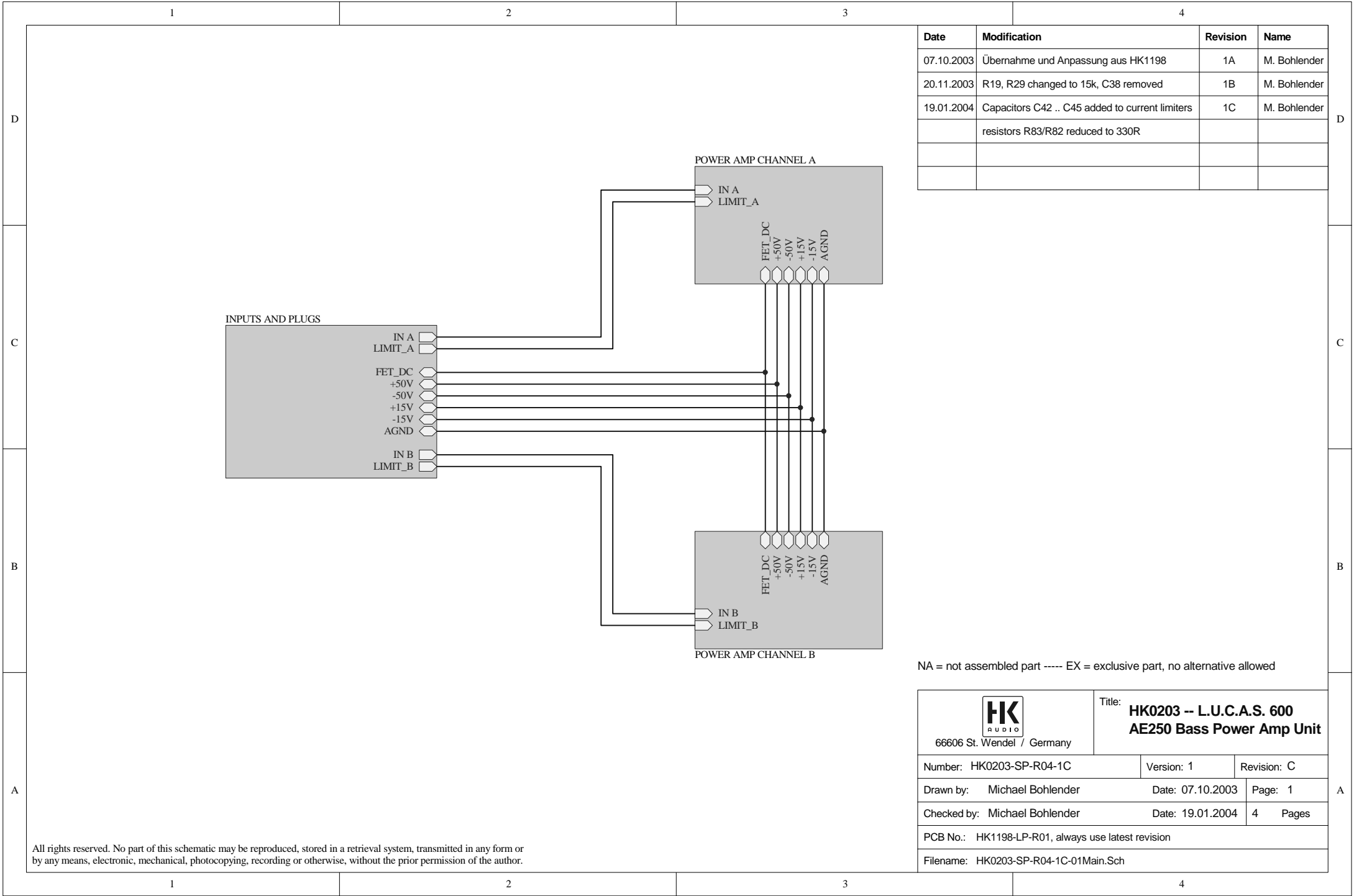
All rights reserved. No part of this schematic may be reproduced, stored in a retrieval system, transmitted in any form or by any means, electronic, mechanical, photocopying, recording or otherwise, without the prior permission of the author.



NA = not assembled part ----- EX = exclusive part, no alternative allowed

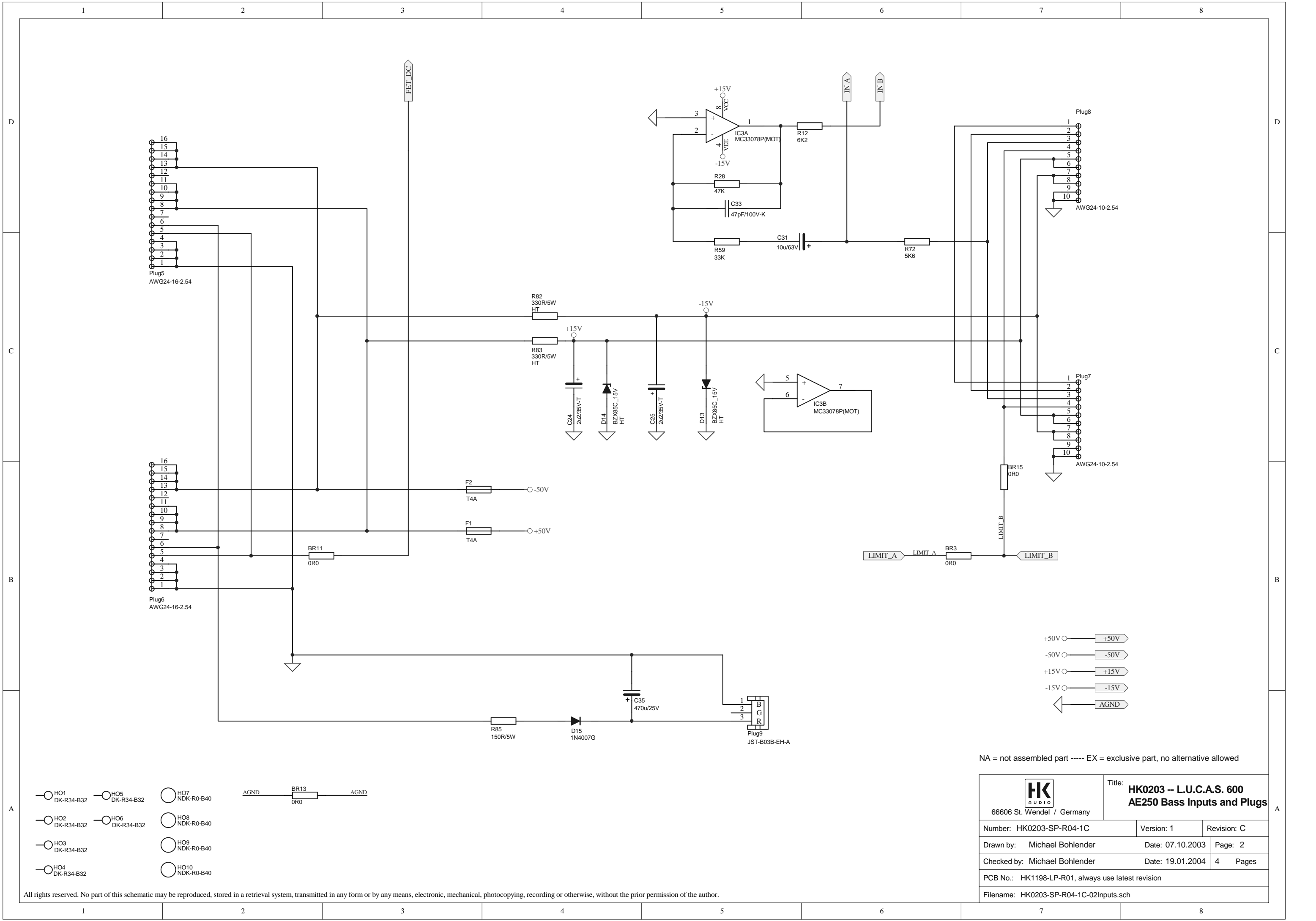
 66606 St. Wendel / Germany		Title: HK0203 - L.U.C.A.S. XT12 TOP Crossover Circuit	
Number: HK0203-SP-R03-1A		Version: 1	Revision: A
Drawn by: Michael Bohlender		Date: 23.07.2003	Page: 1
Checked by: Frank Sitter		Date: 23.07.2003	1 Pages
PCB No.: HK0203-LP-R03-1A.pcb			
Filename: HK0203-SP-R03-1A.sch			

All rights reserved. No part of this schematic may be reproduced, stored in a retrieval system, transmitted in any form or by any means, electronic, mechanical, photocopying, recording or otherwise, without the prior permission of the author.

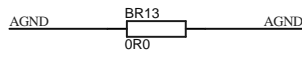


Date	Modification	Revision	Name
07.10.2003	Übernahme und Anpassung aus HK1198	1A	M. Bohlender
20.11.2003	R19, R29 changed to 15k, C38 removed	1B	M. Bohlender
19.01.2004	Capacitors C42 .. C45 added to current limiters	1C	M. Bohlender
	resistors R83/R82 reduced to 330R		


<div><div>HK</div><div>AUDIO</div></div> <div>66606 St. Wendel / Germany</div>		Title: HK0203 -- L.U.C.A.S. 600 AE250 Bass Power Amp Unit	
Number: HK0203-SP-R04-1C		Version: 1	Revision: C
Drawn by: Michael Bohlender		Date: 07.10.2003	Page: 1
Checked by: Michael Bohlender		Date: 19.01.2004	4 Pages
PCB No.: HK1198-LP-R01, always use latest revision			
Filename: HK0203-SP-R04-1C-01Main.Sch			

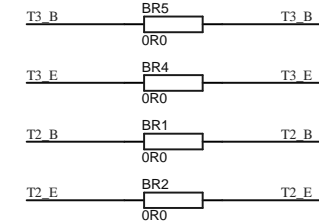


- HO1 DK-R34-B32
- HO2 DK-R34-B32
- HO3 DK-R34-B32
- HO4 DK-R34-B32
- HO5 DK-R34-B32
- HO6 DK-R34-B32
- HO7 NDK-R0-B40
- HO8 NDK-R0-B40
- HO9 NDK-R0-B40
- HO10 NDK-R0-B40



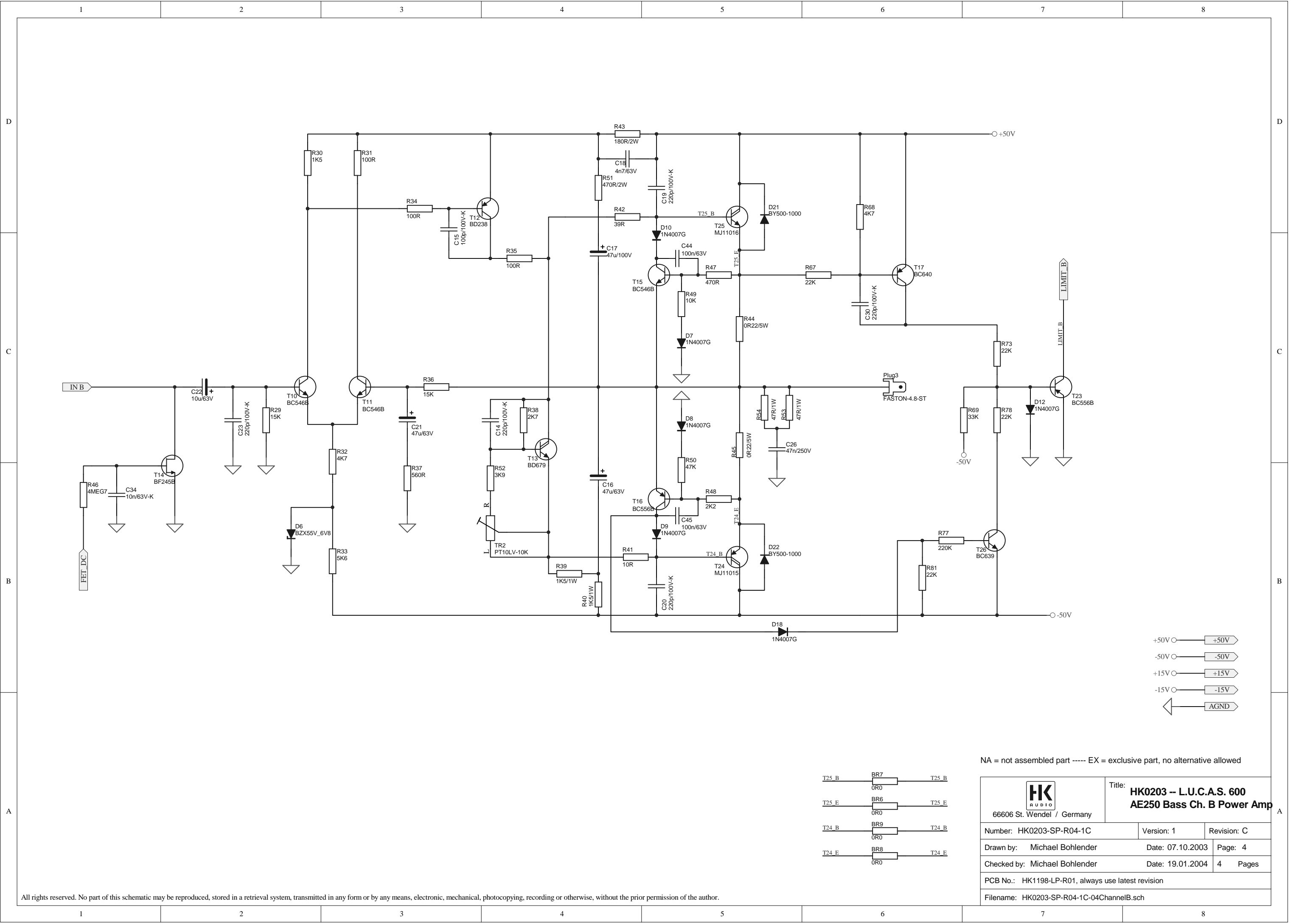
NA = not assembled part ----- EX = exclusive part, no alternative allowed

 66606 St. Wendel / Germany		Title: HK0203 -- L.U.C.A.S. 600 AE250 Bass Inputs and Plugs	
Number: HK0203-SP-R04-1C		Version: 1	Revision: C
Drawn by: Michael Bohlender		Date: 07.10.2003	Page: 2
Checked by: Michael Bohlender		Date: 19.01.2004	4 Pages
PCB No.: HK1198-LP-R01, always use latest revision			
Filename: HK0203-SP-R04-1C-02Inputs.sch			



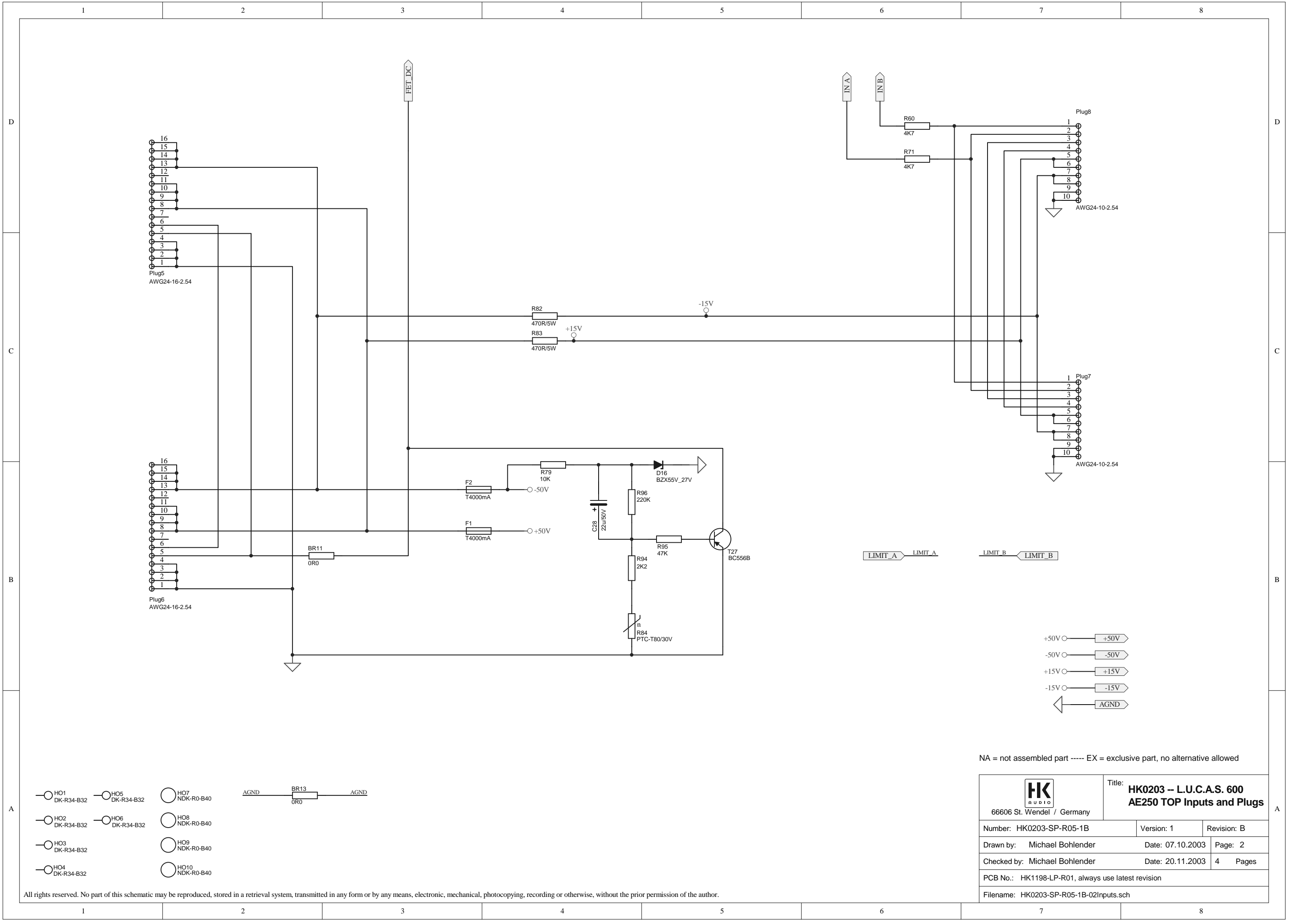
Title: **HK0203 -- L.U.C.A.S. 600
AE250 Bass Ch. A Power Amp**

Number: HK0203-SP-R04-1C	Version: 1	Revision: C
Drawn by: Michael Bohlender	Date: 07.10.2003	Page: 3
Checked by: Michael Bohlender	Date: 19.01.2004	4 Pages
PCB No.: HK1198-LP-R01, always use latest revision		
Filename: HK0203-SP-R04-1C-03ChannelA.sch		



NA = not assembled part ----- EX = exclusive part, no alternative allowed

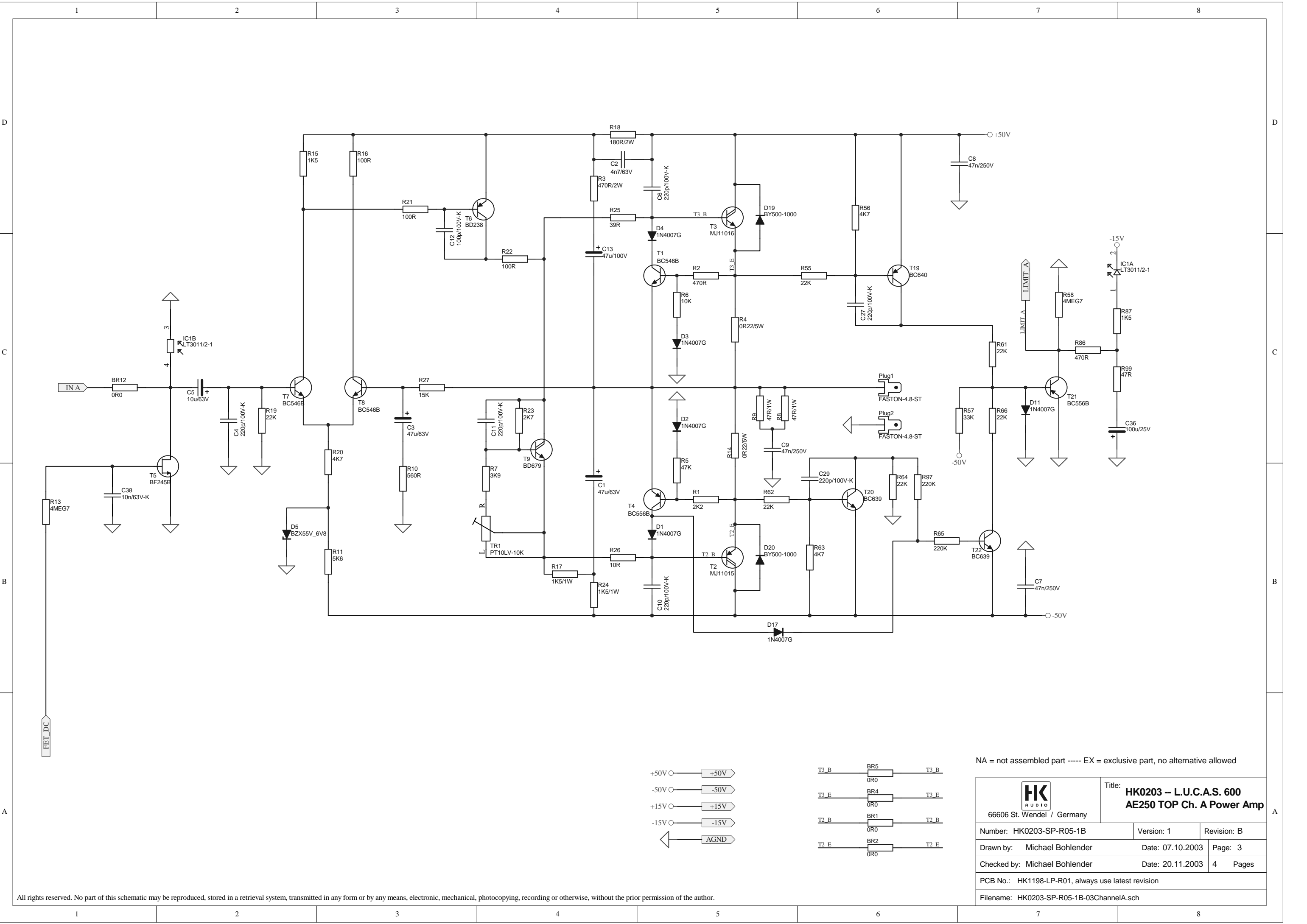
<div><div>HK</div><div>AUDIO</div><div>66606 St. Wendel / Germany</div></div>		Title: HK0203 -- L.U.C.A.S. 600 AE250 Bass Ch. B Power Amp	
Number: HK0203-SP-R04-1C		Version: 1	Revision: C
Drawn by: Michael Bohlender		Date: 07.10.2003	Page: 4
Checked by: Michael Bohlender		Date: 19.01.2004	4 Pages
PCB No.: HK1198-LP-R01, always use latest revision			
Filename: HK0203-SP-R04-1C-04ChannelB.sch			



- HO1 DK-R34-B32
 - HO2 DK-R34-B32
 - HO3 DK-R34-B32
 - HO4 DK-R34-B32
 - HO5 DK-R34-B32
 - HO6 DK-R34-B32
 - HO7 NDK-R0-B40
 - HO8 NDK-R0-B40
 - HO9 NDK-R0-B40
 - HO10 NDK-R0-B40
- AGND BR13 0R0 AGND

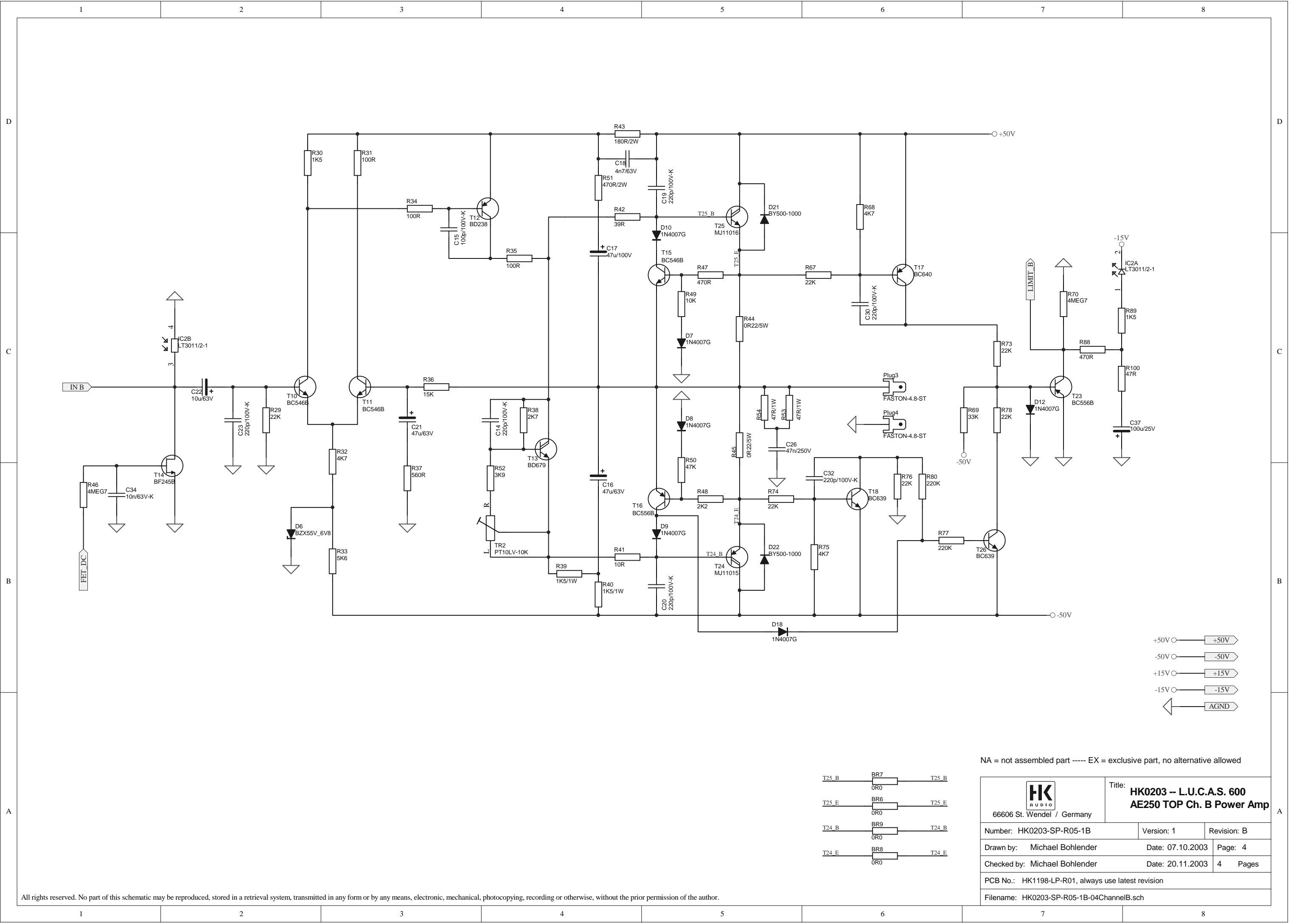
NA = not assembled part ----- EX = exclusive part, no alternative allowed		Title: HK0203 -- L.U.C.A.S. 600 AE250 TOP Inputs and Plugs	
Number: HK0203-SP-R05-1B		Version: 1	Revision: B
Drawn by: Michael Bohlender		Date: 07.10.2003	Page: 2
Checked by: Michael Bohlender		Date: 20.11.2003	4 Pages
PCB No.: HK1198-LP-R01, always use latest revision			
Filename: HK0203-SP-R05-1B-02Inputs.sch			

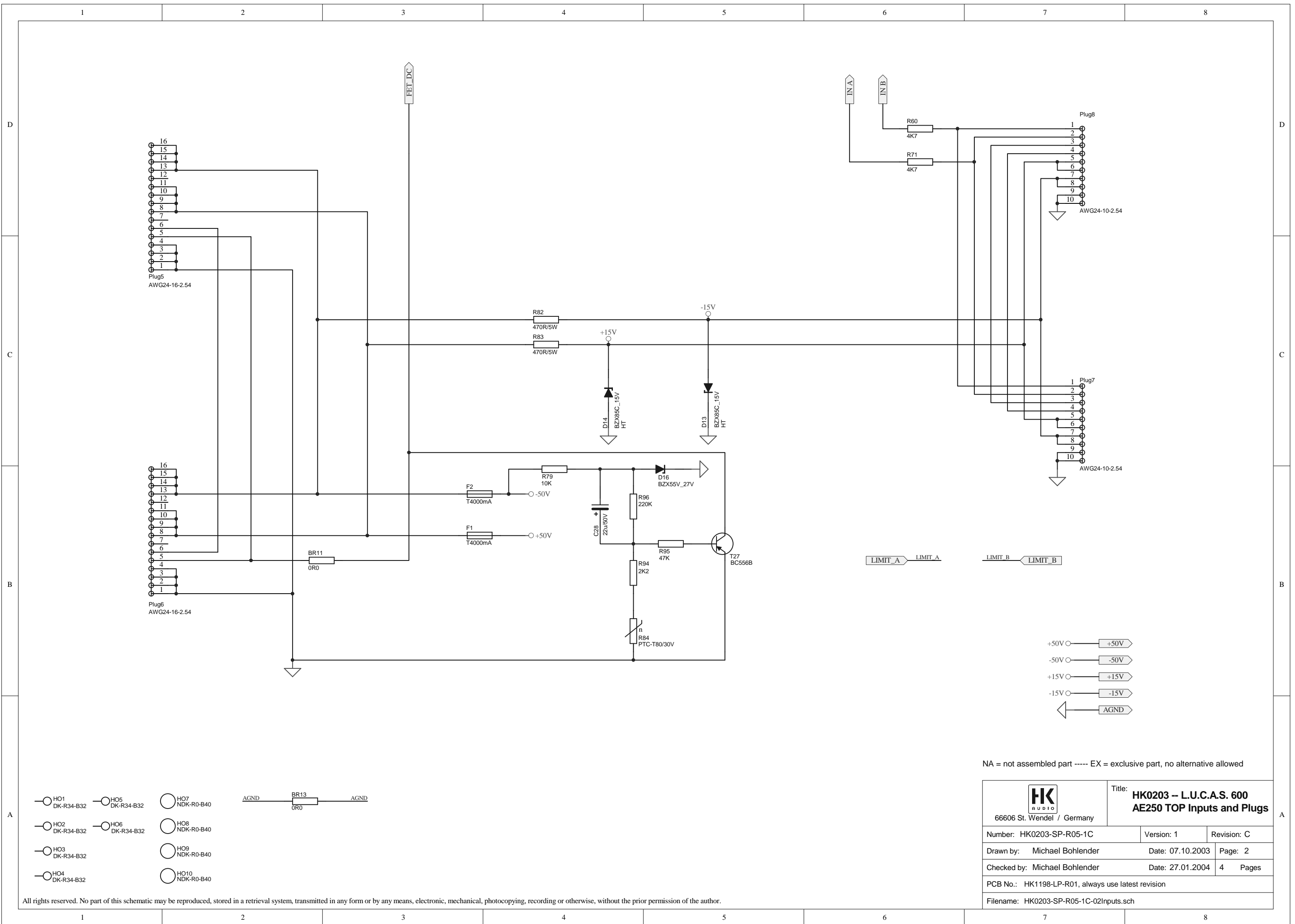
All rights reserved. No part of this schematic may be reproduced, stored in a retrieval system, transmitted in any form or by any means, electronic, mechanical, photocopying, recording or otherwise, without the prior permission of the author.

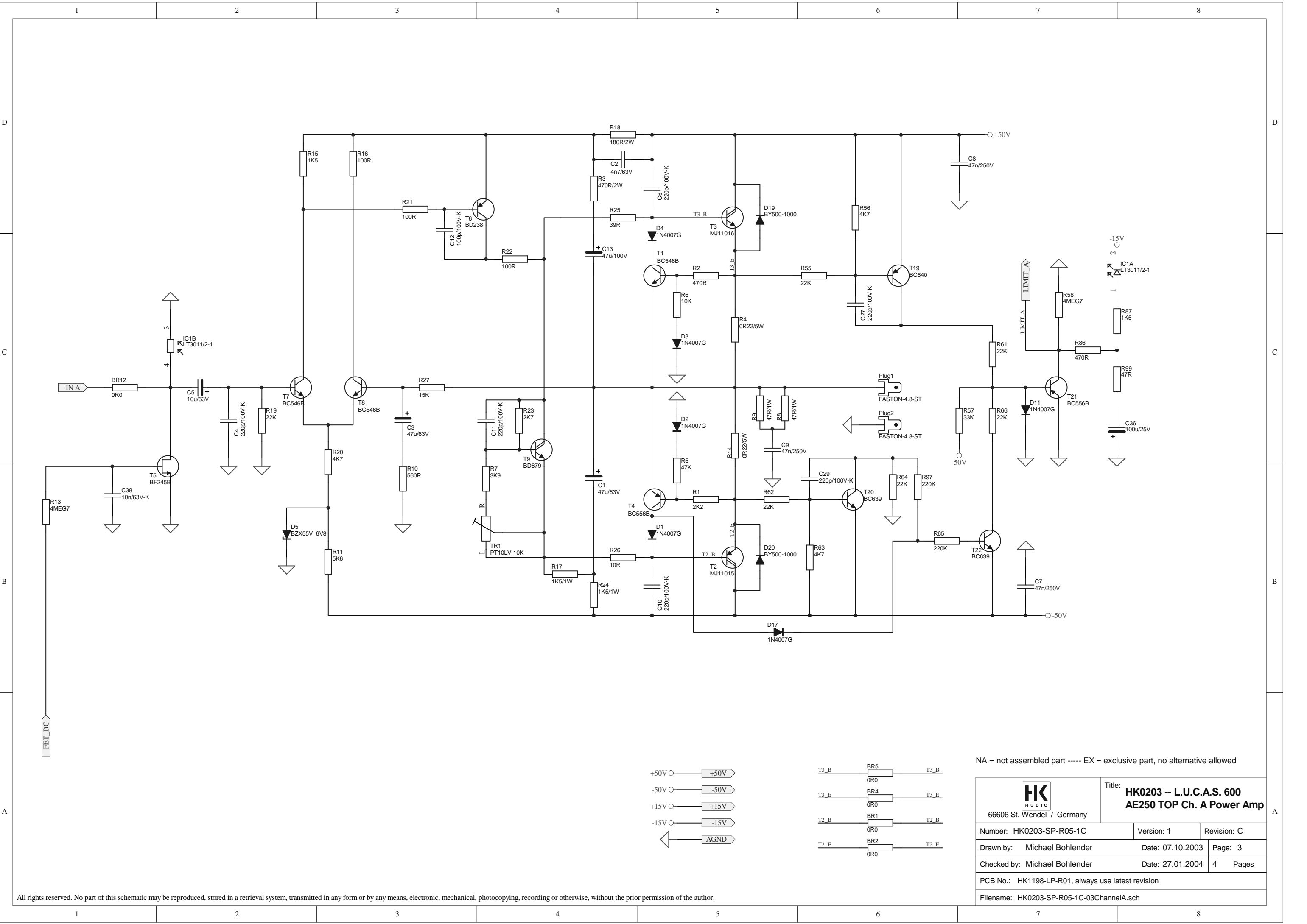


NA = not assembled part ----- EX = exclusive part, no alternative allowed

<div><div>HK</div><div>AUDIO</div><div>66606 St. Wendel / Germany</div></div>	Title: HK0203 -- L.U.C.A.S. 600 AE250 TOP Ch. A Power Amp		
Number: HK0203-SP-R05-1B		Version: 1	Revision: B
Drawn by: Michael Bohlender		Date: 07.10.2003	Page: 3
Checked by: Michael Bohlender		Date: 20.11.2003	4 Pages
PCB No.: HK1198-LP-R01, always use latest revision			
Filename: HK0203-SP-R05-1B-03ChannelA.sch			







NA = not assembled part ----- EX = exclusive part, no alternative allowed

<div><div>HK</div><div>AUDIO</div><div>66606 St. Wendel / Germany</div></div>		Title: HK0203 -- L.U.C.A.S. 600 AE250 TOP Ch. A Power Amp	
Number: HK0203-SP-R05-1C		Version: 1	Revision: C
Drawn by: Michael Bohlender		Date: 07.10.2003	Page: 3
Checked by: Michael Bohlender		Date: 27.01.2004	4 Pages
PCB No.: HK1198-LP-R01, always use latest revision			
Filename: HK0203-SP-R05-1C-03ChannelA.sch			

