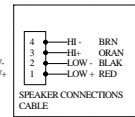
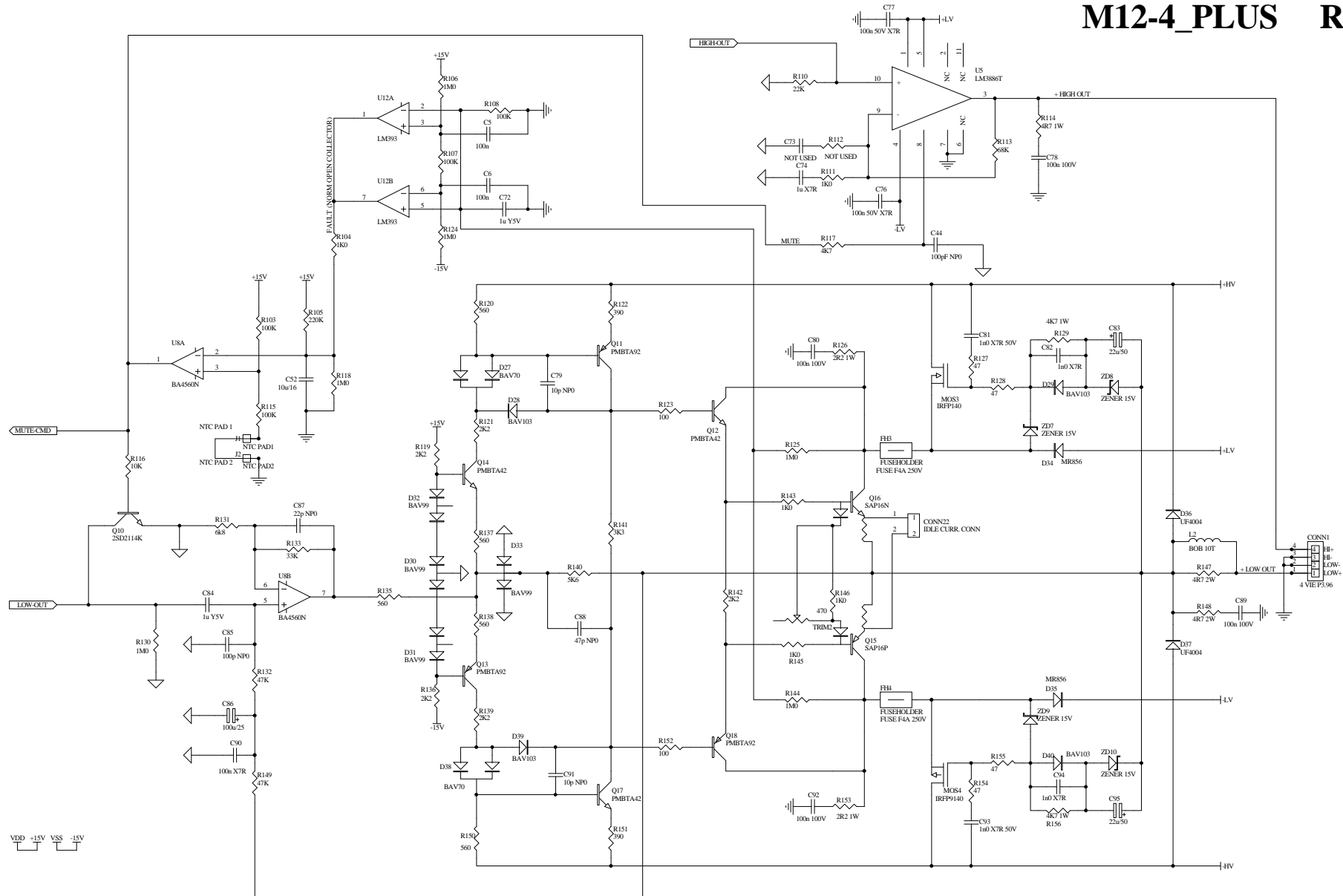
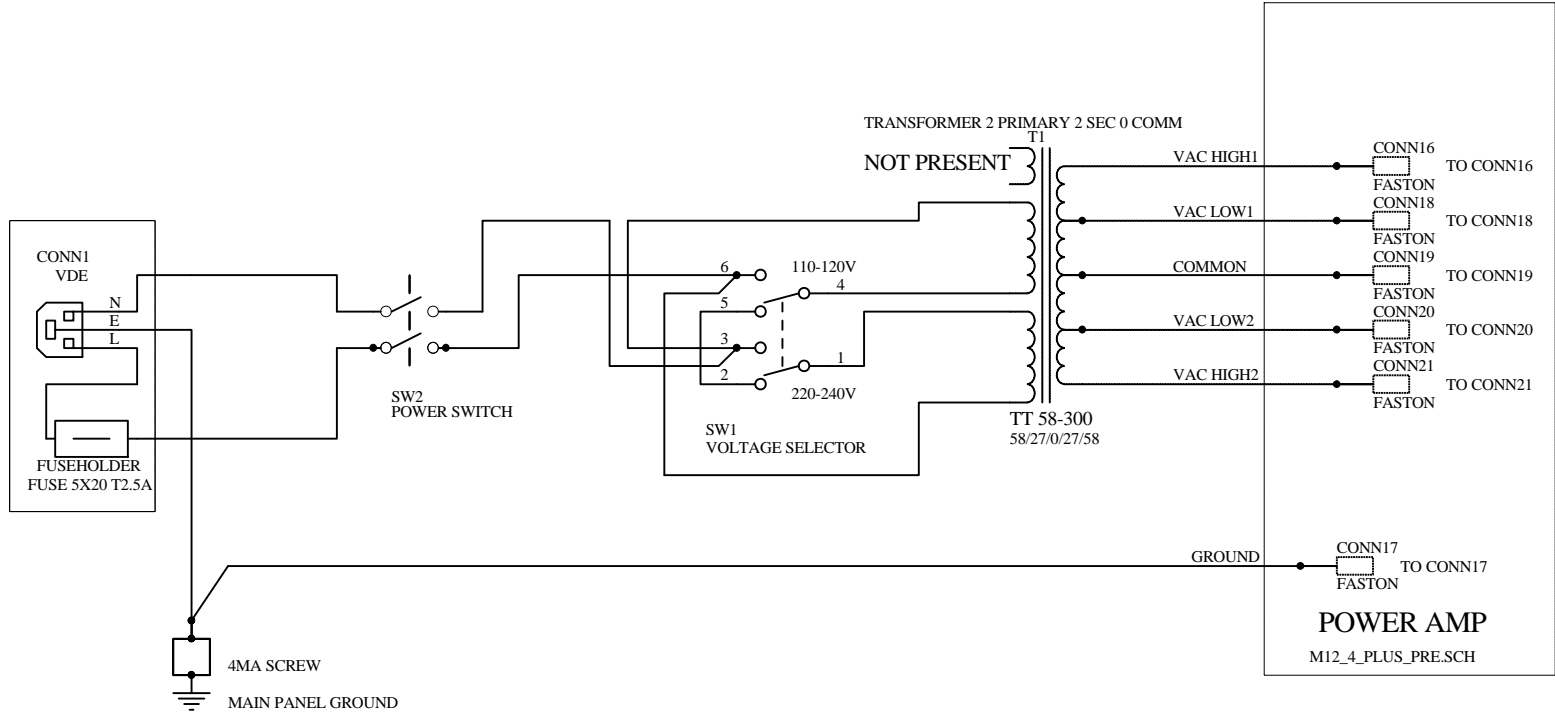


M12-4_PLUS REV1.0



PROJECT NAME: M12-4_PLUS		Description: M12-4_PLUS: LOW+HIGH AMP	
PCB: PST370C	Sheet: 2/2	Revision: REV1_0 01/12/2006	Note:
File Name: M12_4_PLUS_AMP.SCH		Drawn: Savegnago R.	
Proto: <input type="checkbox"/> Production: <input checked="" type="checkbox"/>		Checked: Ottani C.	

M12-4_PLUS REV1.0

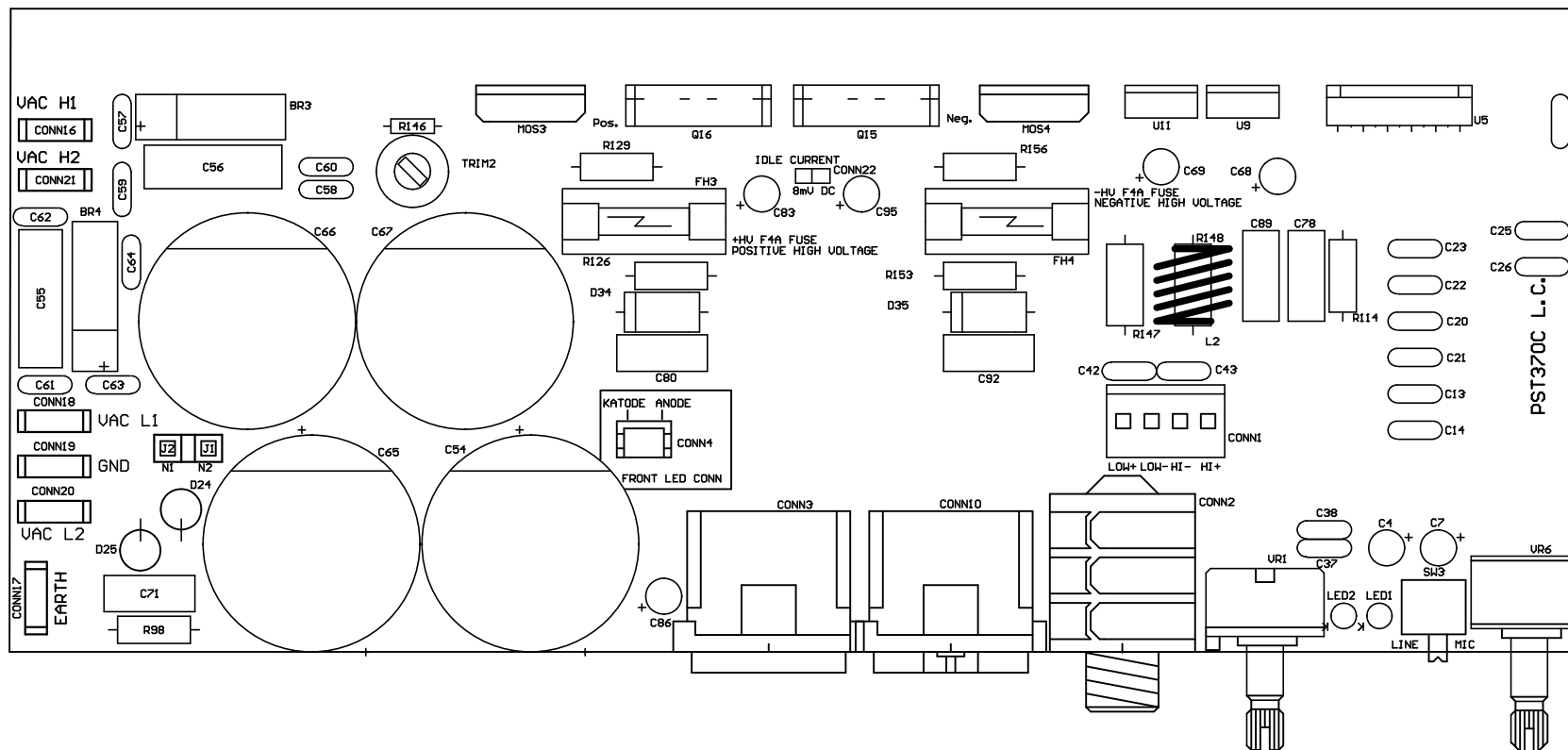


Title			A
M12-4_PLUS_POWER SUPPLY			
Size	Number	Revision	
A4	M12_4_PLUS_PSU.SCH		
Date:	1-Dec-2006		
File:	C:\Documents and Settings\michelangelo\Desktop\BYETRONICA\M12-4-PLUS.DDB		

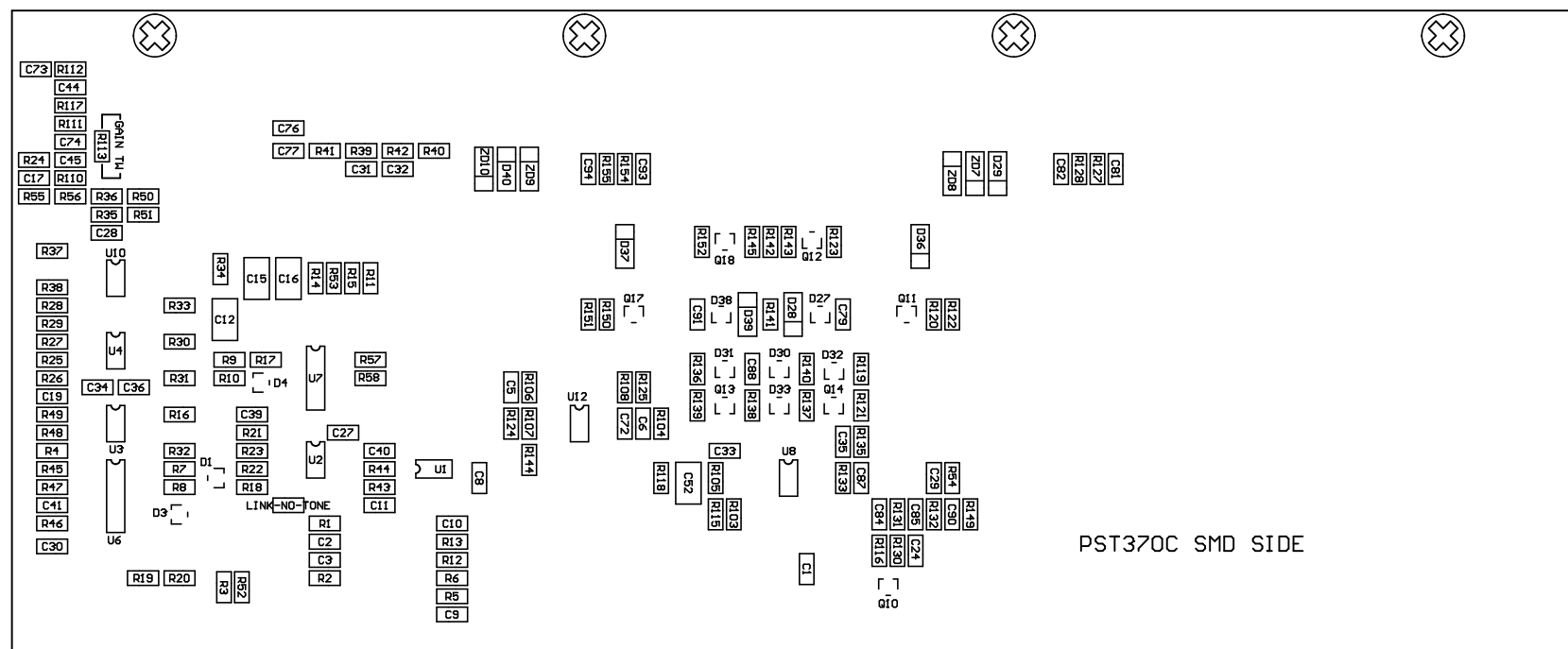
AEB

M12-4_PLUS_REV1_0

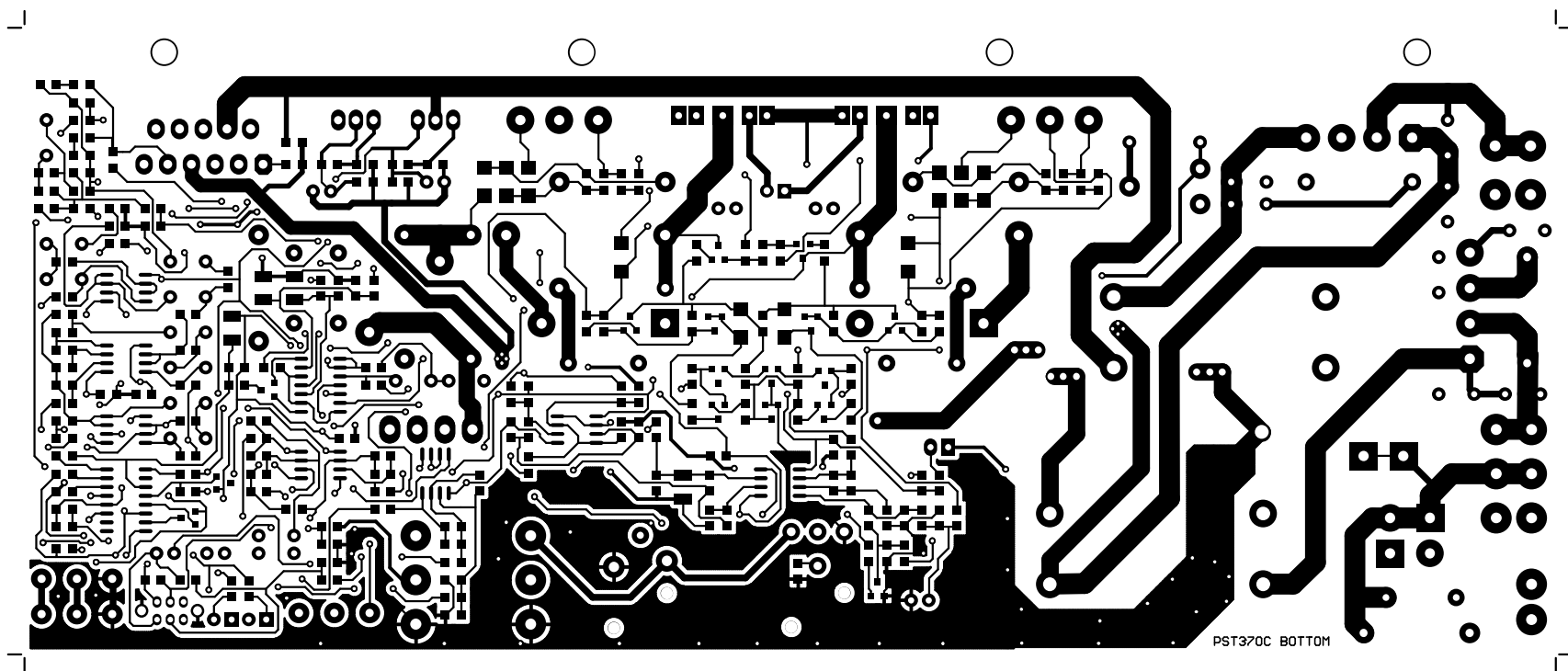
GERBER:



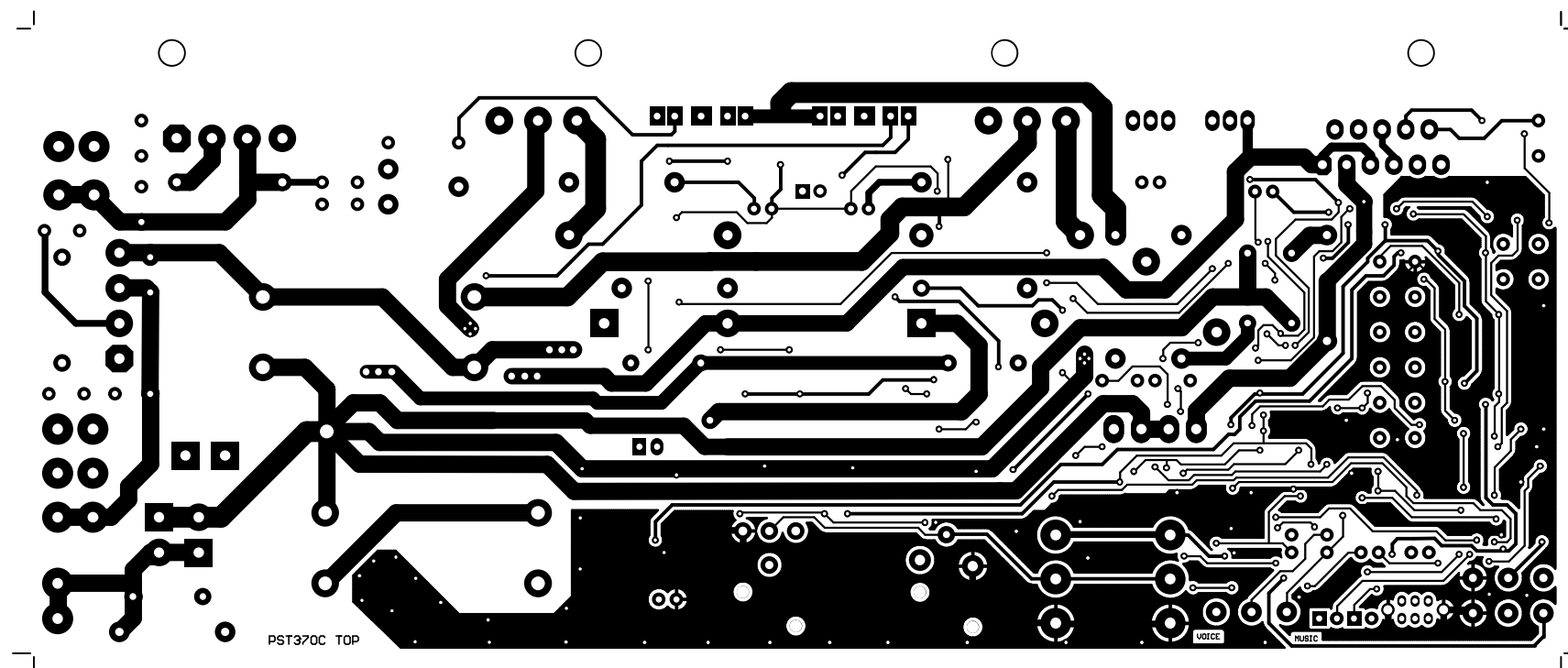
AEB	AEB S.r.l. ACQUSTIC ENGINEERING BUREAU	
	TITLE: M12-4_PLUS_REV1_0	ENGINEER: M. MINELLI PHONE: +39 051.969.870 FAX: +39 051.969.725
LAYER: Mechanical Layer 5	DATE: 1-Dec-2006	PART NO: PST370C
GERBER:	REV: 1	FILE NAME: PST370C.PCB



AEB	AEB S.r.l. ACQUSTIC ENGINEERING BUREAU	
	TITLE: M12-4_PLUS_REV1_0	ENGINEER: M. MINELLI PHONE: +39 051.969.870 FAX: +39 051.969.725
LAYER: Mechanical Layer 5	DATE: 1-Dec-2006	PART NO.: PST370C
GERBER:	REV: 1	FILE NAME: PST370C.PCB




AEB S.r.l. ACQUSTIC ENGINEERING BUREAU		AEB
ENGINEER: M. MINELLI PHONE: +39 051.969.870 FAX: +39 051.969.725	TITLE: M12-4_PLUS_REV1_0	
PART NO: PST370C	DATE: 1-Dec-2006	LAYER: Mechanical Layer 4
FILE NAME: PST370C.PCB	REV: 1	GERBER:



PST370C

MATERIALE/MATERIAL: FR4
 SPESSORE/THICKNESS: 1,6mm
 SOLDER SU LATI TOP E BOTTOM/SOLDER ON TOP AND BOTTOM LAYER
 NO SERIGRAFIE SU BOTTOM LAYER/NO ARTWORK ON BOTTOM LAYER

 <small>ACOUSTIC ENGINEERING BUREAU</small>	UFFICIO PROGETTAZIONE	MOD. BOM
Bill Of Material		
PROGETTO	M12-4_PLUS REV1.0 BOM	DATA: 01/12/2006
NOME FILE	M12-4_PLUS_REV1.0_BOM.XLS	AUTORE: R. SAVEGNAGO
Part Type	Designator	Footprint
		Description
PCB: PST370C		
0R	R29	805 RESISTOR
0R	R24	805
1K0	R36	805 RESISTOR
1K0	R48	805
1K0	R1	805 RESISTOR
1K0	R2	805 RESISTOR
1K0	R35	805 RESISTOR
1K0	R143	805 RESISTOR
1K0	R104	805 RESISTOR
1K0	R111	805
1K0	R145	805 RESISTOR
1K0	R49	805
1K0	R3	805 RESISTOR
1K0	R52	805 RESISTOR
1K0	R146	R 1/4W RESISTOR
1M0	R130	805 RESISTOR
1M0	R124	805 RESISTOR
1M0	R106	805 RESISTOR
1M0	R125	805 RESISTOR
1M0	R144	805 RESISTOR
1M0	R118	805 RESISTOR
1M0 1%	R14	805
1M0 1%	R11	805
1N5404	D24	DIODE P17.5 V 3A DIODE
1N5404	D25	DIODE P17.5 V 3A DIODE
1n0 X7R 50V	C93	805 CER CAP
1n0 X7R 50V	C81	805 CER CAP
1n0 X7R	C94	805 CER CAP
1n0 X7R	C3	805 CER CAP
1n0 X7R	C82	805 CER CAP
1n0 X7R	C1	805 CER CAP
1n0 X7R	C2	805 CER CAP
1n0 63V CER	C62	COND P5 POL CAP
1n0 63V CER	C63	COND P5 POL CAP
1n0 63V CER	C61	COND P5 POL CAP
1n0 63V CER	C64	COND P5 POL CAP
1n0 100V CER	C57	COND P5 POL CAP
1n0 100V CER	C60	COND P5 POL CAP
1n0 100V CER	C59	COND P5 POL CAP
1n0 100V CER	C58	COND P5 POL CAP
1u X7R	C74	805 CER CAP
1u X7R	C11	805 CER CAP

1u X7R	C24	805	CER CAP
1u Y5V	C84	805	CER CAP
1u Y5V	C72	805	CER CAP
2K2	R121	805	RESISTOR
2K2	R142	805	RESISTOR
2K2	R39	805	
2K2	R40	805	
2K2	R136	805	RESISTOR
2K2	R139	805	RESISTOR
2K2	R119	805	RESISTOR
2R2 1W	R126	R 1W	RESISTOR
2R2 1W	R153	R 1W	RESISTOR
2SD2114K	Q10	SOT-23	NPN TRANSISTOR
2n2 POL	C42	COND P5	POL CAP
2n2 POL	C43	COND P5	POL CAP
3K3	R141	805	RESISTOR
4K7	R56	805	RESISTOR
4K7	R117	805	RESISTOR
4K7	R45	805	
4K7 1W	R156	R 1W	RESISTOR
4K7 1W	R129	R 1W	RESISTOR
4R7 1W	R114	R 1W	
4R7 2W	R148	R 2W	
4R7 2W	R147	R 2W	
4 VIE P3.96	CONN1	4 VIE P3.96	4 WAY P3.96 VERT CONN
4u7/16	C15	1210	CER CAP
4u7/16	C16	1210	CER CAP
5K6	R34	805	
5K6	R33	805	
5K6	R140	805	RESISTOR
6K8	R32	805	
6K8	R57	805	RESISTOR
6K8	R16	805	
6k8	R131	805	RESISTOR
10K	R55	805	RESISTOR
10K	R30	805	
10K	R26	805	
10K	R27	805	
10K	R116	805	RESISTOR
10K	R18	805	RESISTOR
10K	R21	805	RESISTOR
10K	R43	805	RESISTOR
10K	R10	805	
10K	R8	805	
10K	R25	805	
10n POL	C13	COND P5	POL CAP
10n POL	C23	COND P5	POL CAP
10n POL	C14	COND P5	POL CAP
10n POL	C38	COND P5	POL CAP
10n POL	C37	COND P5	POL CAP
10n X7R	C19	805	CER CAP
10p NP0	C91	805	CER CAP
10p NP0	C79	805	CER CAP
10u/16	C12	1210	CER CAP
10u/16	C52	1210	CER CAP
12K	R58	805	RESISTOR

18K	R38	805	
20KA	VR6	POT H 16 X2	POTENTIOMETER
22K 1%	R15	805	
22K 1%	R53	805	
22K	R4	805	
22K	R44	805	RESISTOR
22K	R46	805	
22K	R110	805	
22p NP0	C87	805	CER CAP
22u/50	C95	ELECT P2.5 D5	CAPACITOR
22u/50	C4	ELECT P2.5 D5	
22u/50	C83	ELECT P2.5 D5	CAPACITOR
22u/50	C7	ELECT P2.5 D5	
22u/50	C68	ELECT P2.5 D5	
22u/50	C69	ELECT P2.5 D5	
27K	R50	805	RESISTOR
27K	R6	805	
27K	R13	805	
33K	R133	805	RESISTOR
33K	R19	805	RESISTOR
33K	R20	805	RESISTOR
47	R127	805	RESISTOR
47	R128	805	RESISTOR
47	R154	805	RESISTOR
47	R155	805	RESISTOR
47K	R132	805	RESISTOR
47K	R7	805	
47K	R23	805	RESISTOR
47K	R149	805	RESISTOR
47K	R22	805	RESISTOR
47n POL	C22	COND P5	POL CAP
47p NP0	C10	805	CER CAP
47p NP0	C9	805	CER CAP
47p NP0	C88	805	CER CAP
47p NP0	C40	805	CER CAP
56K	R31	805	
68K	R113	805	
82K	R51	805	RESISTOR
100	R123	805	RESISTOR
100	R152	805	RESISTOR
100K	R108	805	RESISTOR
100K	R103	805	RESISTOR
100K	R107	805	RESISTOR
100K	R9	805	
100K	R17	805	RESISTOR
100K	R115	805	RESISTOR
100KB CC	VR1	POT H 16	POTENTIOMETER
100n 50V X7R	C77	805	CER CAP
100n 50V X7R	C76	805	CER CAP
100n 100V	C89	COND P10	CER CAP
100n 100V	C92	COND P10	CER CAP
100n 100V	C80	COND P10	CER CAP
100n 100V	C78	COND P10	CER CAP
100n	C6	805	CER CAP
100n	C5	805	CER CAP
100n MKT	C71	COND P10	CER CAP

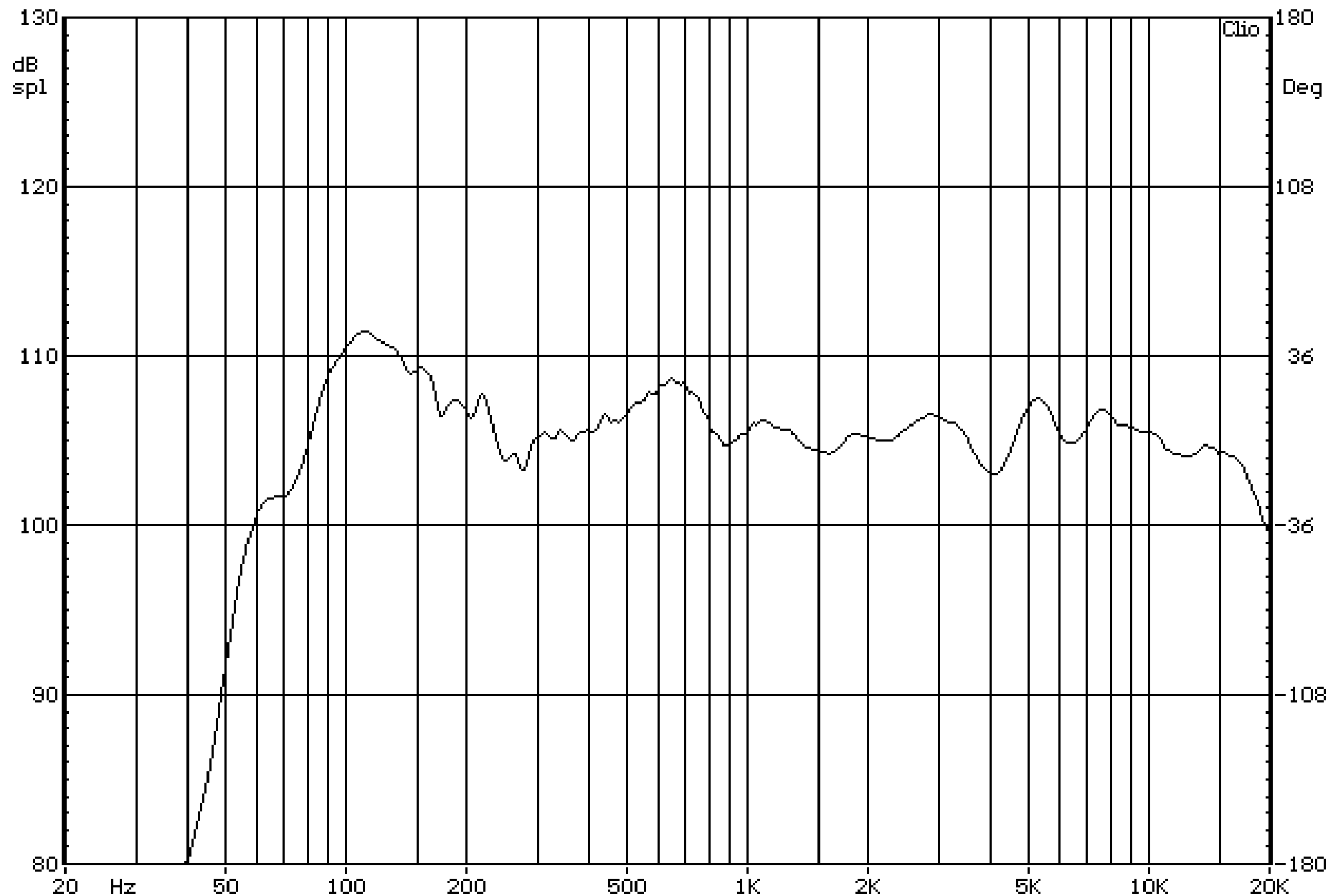
100n MKT	C56	COND P15	CER CAP
100n MKT	C55	COND P15	CER CAP
100n POL	C25	COND P5	POL CAP
100n POL	C20	COND P5	POL CAP
100n POL	C21	COND P5	POL CAP
100n POL	C26	COND P5	POL CAP
100n X7R	C90	805	CER CAP
100n X7R	C32	805	CER CAP
100n X7R	C31	805	CER CAP
100n X7R	C17	805	CER CAP
100n Z5U	C29	805	CER CAP
100n Z5U	C28	805	CER CAP
100n Z5U	C34	805	CER CAP
100n Z5U	C35	805	CER CAP
100n Z5U	C36	805	CER CAP
100n Z5U	C33	805	CER CAP
100n Z5U	C30	805	CER CAP
100n Z5U	C27	805	CER CAP
100pF NP0	C45	805	CER CAP
100pF NP0	C44	805	CER CAP
100p NP0	C41	805	CER CAP
100p NP0	C85	805	CER CAP
100p NP0	C8	805	CER CAP
100p NP0	C39	805	CER CAP
100u/25	C86	ELECT P2.5 D5	CAPACITOR
220	R41	805	
220	R42	805	
220	R5	805	RESISTOR
220	R12	805	RESISTOR
220K	R105	805	RESISTOR
390	R122	805	RESISTOR
390	R151	805	RESISTOR
470	R37	805	
470	R47	805	
470	TRIM2	PT10V	TRIMMER
560	R120	805	RESISTOR
560	R135	805	RESISTOR
560	R138	805	RESISTOR
560	R137	805	RESISTOR
560	R150	805	RESISTOR
470 1W	R98	R 1W	
6800u/50	C67	ELECT SNAP30	CAPACITOR
6800u/50	C66	ELECT SNAP30	CAPACITOR
6800u/50	C65	ELECT SNAP30	CAPACITOR
6800u/50	C54	ELECT SNAP30	CAPACITOR
BA4560N	U2	SO-8	DUAL OP AMP
BA4560N	U1	SO-8	DUAL OP AMP
BA4560N	U4	SO-8	DUAL OP AMP
BA4560N	U3	SO-8	DUAL OP AMP
BA4560N	U8	SO-8	DUAL OP AMP

Test : M12-4_PLUS FREQUENCY RESPONSE MLS ANALYSIS

Date: 01-12-04

About:

Time: 09:40:04

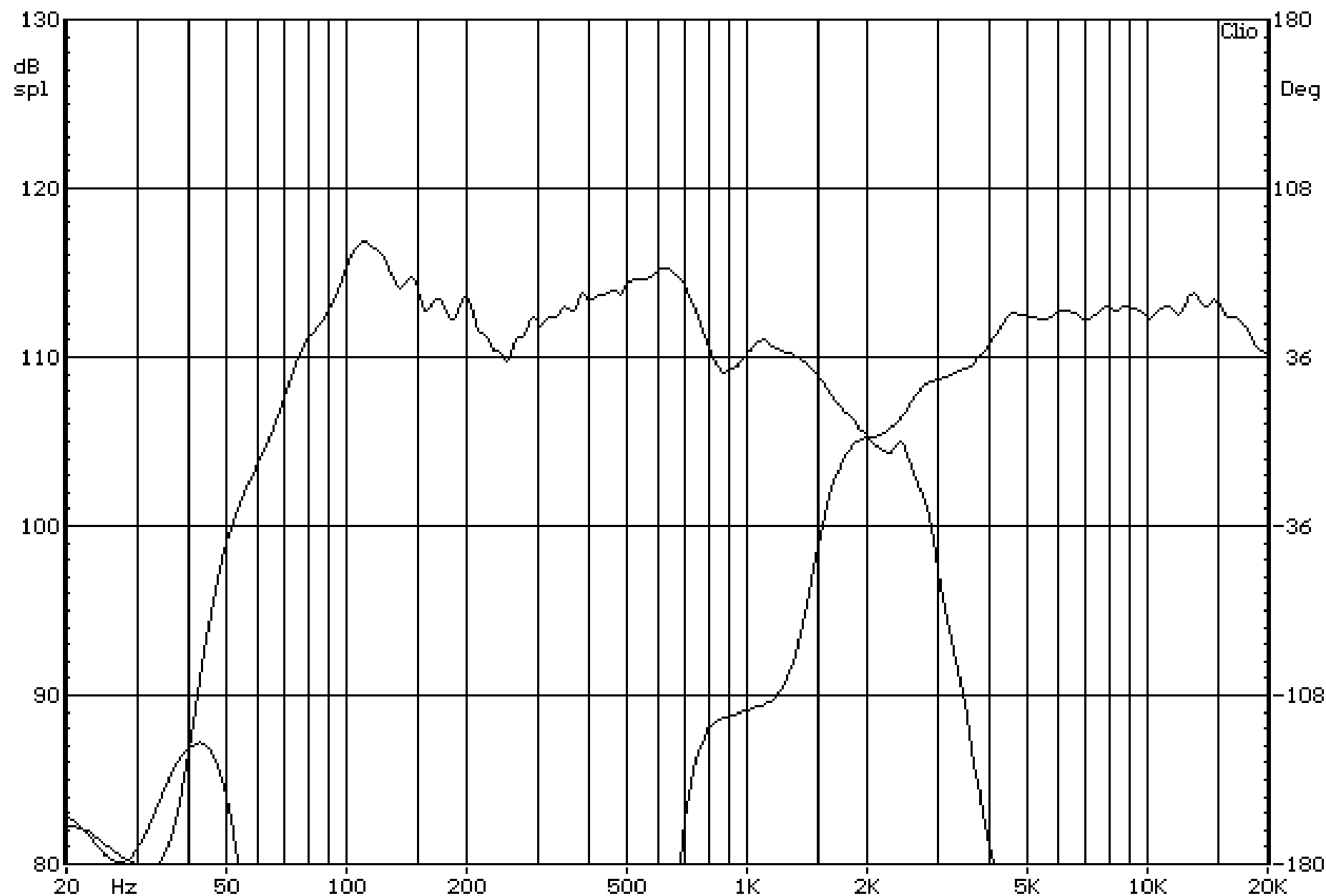


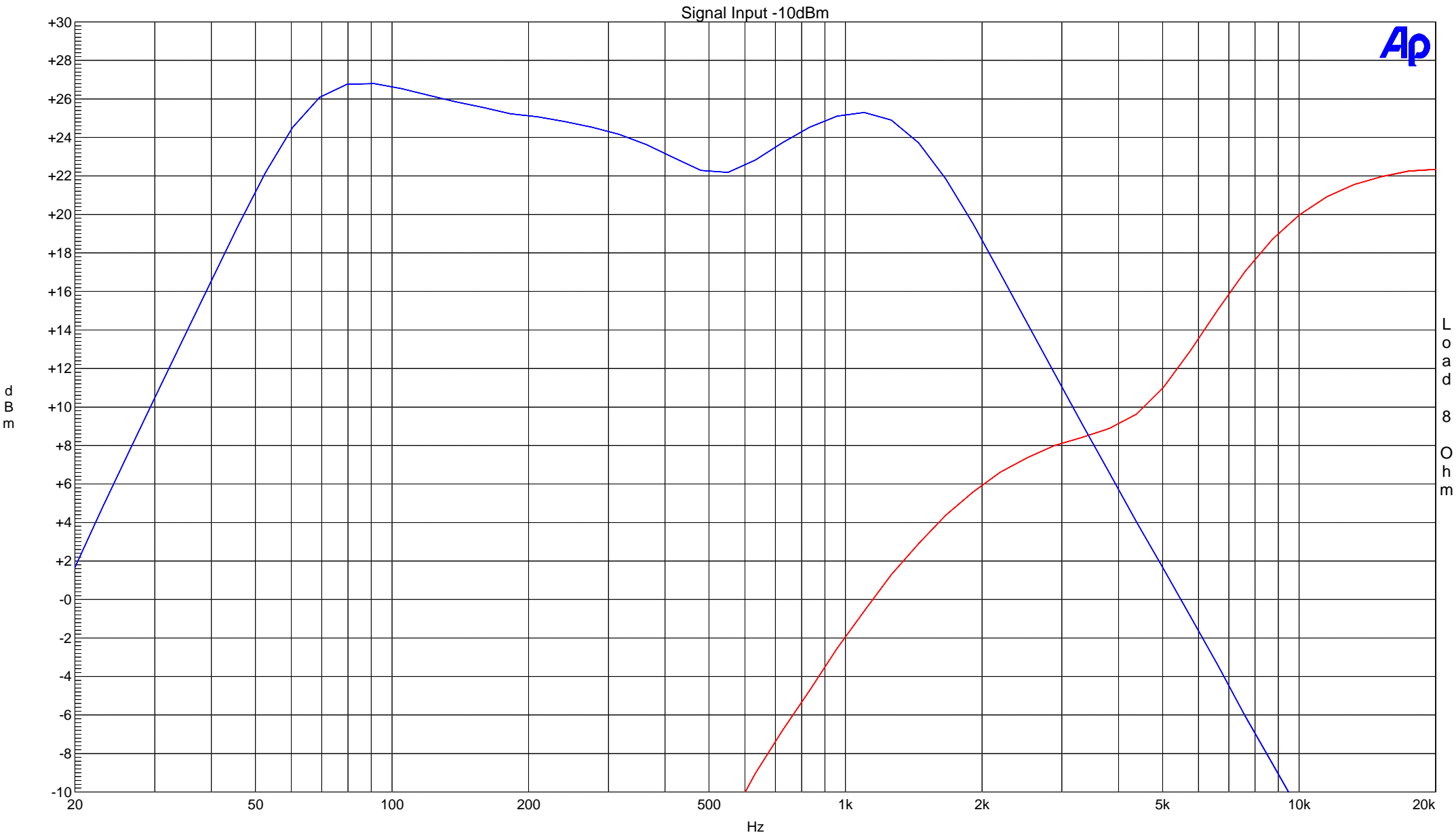
Test : M12-4_PLUS CROSSOVER FREQUENCY MLS ANALYSIS

Date: 01-12-04

About:

Time: 09:46:49





Load 8 Ohm

Sweep	Trace	Color	Line Style	Thick	Data	Axis	Comment
1	1	Red	Solid	5	Anlr.Level A	Left	
2	1	Blue	Solid	5	Anlr.Level A	Left	