

**SERVICE**

**MANUAL**

P O W E R  
**AMPLIFIER**

**H-3200**

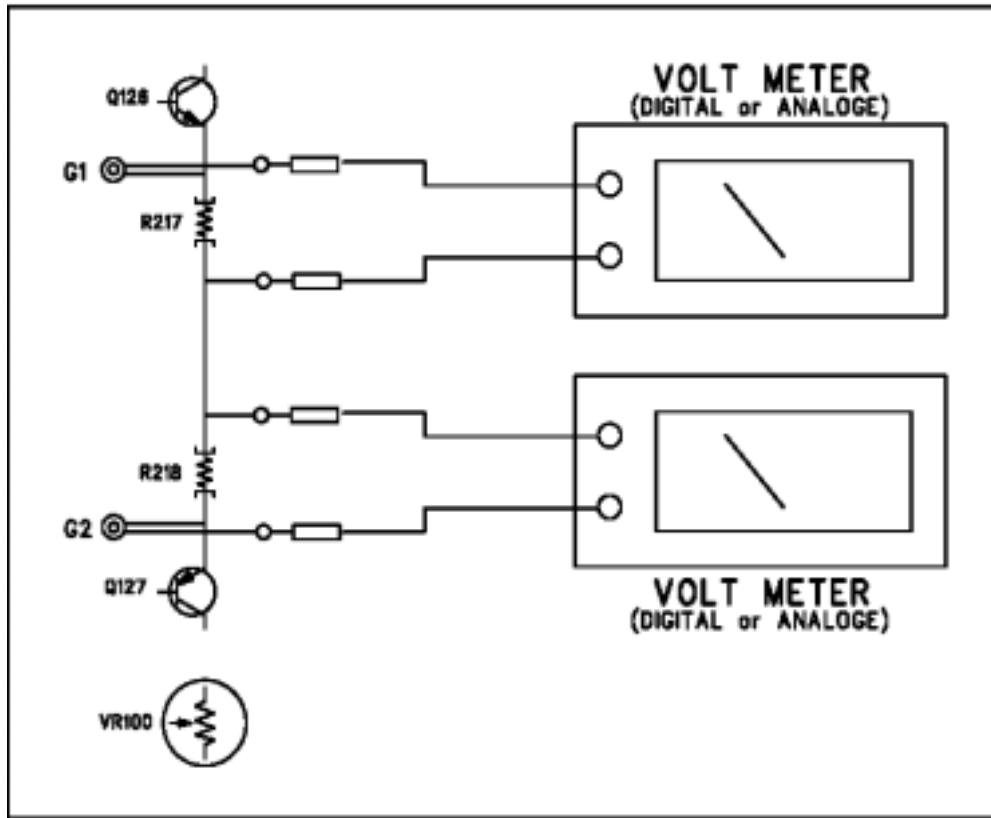
**interM**

## REQUIRED TEST EQUIPMENT

1. Oscilloscope
2. 1kHz audio sine wave generator
3. Digital multimeter
4. 2-ohm resistive load (rated for at least 1200W)

## IDLE CURRENT(H-3200/4200)

1. Setting  
set the master volume controls minimum
2. Connection



3. Adjustment

While measuring the DC voltage across resistor R217 or R218  
adjust VR 100 and VR 100, range as shown below.

Model	DC voltage range	Adjust
-3200/420	80mV 120mV	Channel 1 : DC voltage across R217(3 /2W) or R218(3 /2W), adjust VR100 Channel 2 : DC voltage across R217(3 /2W) or R218(3 /2W), adjust VR100

## Specification

	H-3200	H-4200
Power Output Level		
STEREO 1kHz both channels driven		
$R_L=8$ @ 0.1% THD	800W	1000W
$R_L=4$ @ 0.1% THD	1200W	1600W
$R_L=2$ @ 0.1% THD (1ch driven)	1600W	2100W
BRIDGED $R_L=8$ 1kHz @ 0.1% THD	2400W	3000W
$R_L=4$ 1kHz @ 0.5% THD	3200W	4200W
Frequency Response $R_L=8$ , $P=1W$	20Hz~20kHz : $\pm 0/1dB$ , -3dB : 5Hz~70kHz	
Total Harmonic Distortion(THD+N)		
f=20Hz~20kHz, 1/10Power		
STEREO $R_L=8$ & 4	0.03%	
BRIDGED $R_L=8$	0.03%	
Channel Separation Half Power $R_L=8$ , f=1kHz, ATT. max. Input 600 shunt	80dB	
Residual Noise (DIN Audio Filter)	-85dB: ATT min.	
Signal-to-Noise Ratio(DIN Audio Filter)	107dB	
Input 600 Shunt		
Standard Input Sensitivity (Rated Power into 4 1kHz)	1V	1V
Damping Factor $R_L=8$ , f=1kHz	450	
Voltage Gain (ATT max.) 4 1kHz	69dB	78dB
Output Circuitry	H- Class	H- Class
Input Impedance (ATT max.)	20k (Balance/Unbalance)	
Indicators	Active, Clip / Limiter, Signal, Protection	
Protection	Power SW ON/OFF muting, Full short circuit Thermal, RF ,Ultrasonic	
Fan Circuit	Low-Speed - Variable - Hi-Speed	
Connectors	Input : balanced combination connector (XLR type + 1/4" TRS) Output : 5-Way binding posts×2, Speakon Terminal×2	
Power Source	100~120VAC or 220~240VAC ; 50/60Hz (Supplied AC mains transformer depends on country requirements)	
Weight	32kg/70.5lb	35kg/77.2lb
Dimensions	482(W)×132(H)×475(D)mm/19(W)×5.2(H)×18.7(D)in	

Input Sensitivity	H-3200		H-4200	
	Gain	Input Sensitivity	Gain	Input Sensitivity
Standard	0dB(×69)	1V	0dB(×78)	1V
Option 1	6dB(×40)	1.73V	6dB(×40)	1.94V
Option 2	12dB(×20)	3.46V	12dB(×20)	3.87V

Current		LOAD	Typical(1/8 Power)	1/3 Power	Full Power
H-3200	120V	8ohm	5.1A	9.3A	21A
		4ohm	8.4A	15.4A	37.6A
		2ohm	9.2A	24A	55.6A
	230V	8ohm	2.2A	5.7A	12.6A
		4ohm	4.3A	9.3A	21.2A
		2ohm	5.7A	14.2A	32.4A
H-4200	120V	8ohm	6A	11.8A	26.8A
		4ohm	8.6A	19.6A	47.2A
		2ohm	12.6A	31.6A	80.8A
	230V	8ohm	3.1A	7A	15.8A
		4ohm	4.6A	11.4A	26.2A
		2ohm	7A	17.8A	40.4A

0dB=0.775 Vrms, Half Power=1/2 Power Output Level (Rated Power)

This specification and performance might change without a prior notice depending on the company's situations.

## ELECTRICAL PARTS LIST ( H-3200 )

Ref No.	Part No.	Description	Value	Qty
<b>AMP(4005178000)</b>				
AN106	4428588816	WAFER B16P-XL-HDS JST(5MM)	JST16P	1
VR100	3248310126-T	RES SEMI RH063LC 12R 100	100	1
C118	S35103325331	CAP CE 0.0033UF 50V 0805(2012)	0.0033/50(2)	1
C113	S35105625544	CAP CE 5600PF 250V K 3216	0.0056/K(3)	1
C106 C142 C147	S35101044344	CAP CE0.1UF 50V J(3216)	0.1/50(3)	3
C108-109	3609154122-T	CAP MA 0.15UF 100V MINI	0.15/100	2
R209-214 R238-243	3059228674	RES CE RGC3 0.22 3W(NOBLE)	0.22 3W	12
C105	3609224122-T	CAP MA 0.22UF 100V J MINI	0.22/100	1
R105 R225	S30101227231	RES TF 1.2K 1/10W 2012	1.2K(2)	2
R139	S30101007440	RES TF 10J 1/4W 3216	10(3)	1
R247	3029100475-T	RES MF 10 1W JR	10/1W	1
C104 C124 C133 C137	3409210071-T	CAP AF RSG 10UF 50V 5 P	10/50(RSG)	4
R125-126 R256	S30101017231	RES TF 100 1/10W 2012	100(2)	3
R206 R235	S30101017440	RES TF 100J 1/4W 3216	100(3)	2
C103 C117	3409810131-T	CAP AF NP 100UF 16V	100/16(NP)	2
R248	3039101472-T	RES MO 100 1W T	100/1W	1
C107 C119 C121 C134 C138 C144 C149	3409210141-T	CAP AF RSG 100UF 25V 6 P	100/25(RSG)	7
R228	S30101047231	RES TF 100K 1/10W 2012	100K(2)	1
R147-148 R150-151 R163-164 R166-167 R178-179 R181-182 R192-195 R258	S30111045440	RES TF 100KF 1/4W 3216	100KF(3)	17
C101-102 C132 C136 C143 C148	S35101014331	CAP CE C 100PF 50V J 0805(2012)	100P(2)	6
C116	S3520101444	CAP CE 100PF 50V K 3216	100P(3)	1
R100-101 R103-104 R145-146 R255	S30101037231	RES TF 10K 1/10W 2012	10K(2)	7
D109 D113	2058512190	DIODE ZENER 10V 1W(IN4740A)	10V/1W	2
R232	S30101137231	RES TF 11K 1/10W 2012	11K(2)	1
R177 R191 R216 R245 R251-254	3039120674	RES MO 12 3W JP	12/3W	8
R157 R173 R276 R278	S30101237231	RES TF 12K 1/10W 2012	12K(2)	4
D127 R130	2058512150	DIODE ZENER 12V 1W(IN4742A)	12V 1W	2
R264-265	3032133455-T	RES MO 13.3K 1W FR	13.3K/1W	2
R127	S30101547340	RES TF 150K J 3216	150K(3)	1
R246	3039153475-T	RES MO 15K 1W JR	15K 1W	1
D106-107	2058510150	DIODE ZENER UZP-15BM(1N4744A)	1N4744A	2
R102	S30101027231	RES TF 1K 1/10W 2012	1K(2)	1
D100-102 D105 D110-111 D114-115 D119-121 D126 D129 D131	2058304100	DIODE IN4148M	1N4148	14
D118 D122	2058100106	DIODE 1N5404	1N5404	2
R187 R201 R227 259 R260	S30102227231	RES TF 2.2K J 1/10W 2012	2.2K(2)	5
L101	2648099800	COIL INDUTOR 2.2UF	2.2uH	1
R138	S30102017231	RES TF 200 1/10W 2012	200(2)	1
R121-122	S30102037231	RES TF 20K 1/10W 2012	20K(2)	2
C128	3409822071-T	CAP AF NP 22UF 50V 8 P	22/50(NP)	1
C111 C114	3409222171-T	CAP AF RSG 220UF 50V SG 10 P	220/50(RSG)	2
R131-132	S30102437231	RES TF 24K 1/10W 2012	24K(2)	2
E106-107	4465998210	TERMINAL(250)PCB TAB	250/T	2
R106 R128	S30342745330	RES MF 274 F 2012	274(2)	2
R226 R269	S30102737231	RES TF 27K 1/10W 2012	27K(2)	2
D124-125	2078055960-T	THYRISTOR 2N5064 PHILIPS	2N5064	2
Q119-124	2028107118	TR PNP 2SA1943 TOSHIBA	2SA1943	6
Q136-141	2028407122	TR NPN 2SC5200 TOSHIBA	2SC5200	6
R156 R172 R263 R268 R270 R272 R247-275 R277	S30133015230	RES TF 3.01K F 1% 2012	3.01K(2)	9
R250	3039399674	RES MO 3.9 3W JR	3.9/3W	1
D108 D112	2058502039	DIODE ZENER 1N5228B 3.9BM	3.9V	2

R217 R218 R262	3029309575-T	RES MF 3 2W JR	3/2W	3
R137 R142	S30103907441	RES TF 39 1/4W 3216	39(3)	2
R141 R144 R271	S30103917231	RES TF 390 1/10W 2012	390(2)	3
Q101-102 Q105 Q107-109 Q111 Q114 Q128-130 Q132 Q134 Q143 Q146	S20560448002	TR NPN 2N3904 SOT23 HSMC	3904(S)1A	15
Q103-104 Q106 Q112 Q115 Q117 Q131 Q133 Q144 Q147	S20510405004	2N3906S-RTK	3906(S)ZAAD	10
R123 R221 R233	S30103937231	RES TF 39K 1/10W 2012	39K(2)	3
R222	3029393575-T	RES MF 39K 2W JR	39K/2W	1
R205 R236	S30104797440	RES TF 4.7J 1/4W 3216	4.7(3)	2
R135 R149 R152 R165 R168 R183-184 R198-199	S30104727231	RES TF 4.7K 1/10W 2012	4.7K(2)	9
R129 R154 R170 R185 R197 R223 R257 R261	S30114645340	RES TF 464K F 1% 3216	464KF(3)	8
R158 R174 R188 R202	S30104707231	RES TF 47 1/10W 2012	47(2)	4
C100	3409247044-T	CAP RG 47UF 25V	47/25(RG)	1
R109 R153 R169 R180 R196	S30104737231	RES TF 47K 1/10W 2012	47K(2)	5
R120	S30104737440	RES TF 47KJ 1/4W 3216	47K(3)	1
C131 C135 C140 C146 C135 C140 C146	S35104704331 S35104704331 S35104704331 S35104704331	CAP CE C 47PF 50V J 0805(2012) CAP CE C 47PF 50V J 0805(2012) CAP CE C 47PF 50V J 0805(2012) CAP CE C 47PF 50V J 0805(2012)	47P(2) 47P(2) 47P(2) 47P(2)	4
R130	S30114995340	RES TF 499K F 3216	499KF(3)	1
R249	3039569575-T	RES MO 5.6 2W JR	5.6/2W	1
R140 R143 R155 R171 R186 R200	S30135905230	RES TF 5.9K F 1% 2012	5.9KF(2)	6
C112	S35205604544	CAP CE 56P 200V J 3216	56P(3)	1
C110	S35200504544	CAP CE 5PE 200V 3216	5P 200V(3)	1
R230	S30106217330	RES TF 620J 1/8W 2012	620(2)	1
R107-108	S30146345440	RES TF 634F 1/4W 3216	634F(3)	2
R124 R133 R273	S30107527230	RES TF 7.5K J 1/10W 2012	7.5K(2)	3
R136	S30147875330	RES TF 787F 1/8W 2012	787F(2)	1
R159-162 R175-176 R189-190 R203-204	3039822674	RES MO 8.2K 3W J	8.2K/3W	10
R229	S30108207231	RES TF 82 1/10W 2012	82(2)	1
R134 R219-220 R224	S30108217340	RES TF 820 J 3216	820(3)	4
R266-267	3033909455-T	RES MO 9.09K 1W FR	9.09K/1W	2
Q149	2078000710	TRIAC BTA41-600B	BTA41-600B	1
E101-104	4355708704	CON ASSY 4P (110MM)RED/BLK	CH1	4
E101-104	4355708804	CON ASSY 4P (110MM)WHT/BLK	CH2	4
CN103	4428595010	LW5267/LWB0640/2.5MM-10P	CN10P	1
CN102	4428595012	LW5267/LWB0640/2.5MM-12P	CN12P	1
CN302	4428595002	LW5267/LWB0640/2.5MM-02P	CN2P	1
CN301	4428595005	LW5267/LWB0640/2.5MM-05P	CN5P	1
CN101	4428595007	LW5267/LWB0640/2.5MM-07P	CN7P	1
FR207 FR234	3079120475-T	RES NFR 12 1W JR	FR12/1W	2
D103-104	2058499222	DIODE FRAF804G TAIWAN SEMI	FRAF804G	2
IC103-106	S21102087701	IC LM311D-T(VOLT COM)PHILIPS	LM311M	4
C122-123	3609222120-T	CAP MA 0.0022UF 100V J	MA0.0022	2
Q126-127	2028407995	TR NPN MJE15032(MOTOROLA)	MJE15032	2
Q113 Q116 Q145 Q148	2048248100	FET MTP52N06V (N-CH) ON SEMI	MTP52N06V	4
D116-117 D123 D128	2058300996	DIODE MUR1520 MOTOROLA	MUR 1520	4
IC101	S21101167701	IC NE5517D PHILIPS	NE5517D	1
IC100 IC102	2118013377	IC NE5532N PHILIPS	NE5532N	2
R231	2438000001	POSISTOR NTC 103JYW 40	NTC-10K	1
G1-8	4225000810-T	TEST POINT (NZ0352-001Z)	TEST POINT	8
C125-126 C139 C145	3639103253-T	CAP TL 0.01UF 250V	TL0.01/250v	4
C129-130	3609683153-T	CAP TL 0.068UF 250V(SAMWHA)	TL0.068/250	2
C127	3609104153-T	CAP TL 0.1UF 250V(SAMWHA)	TL0.1/250V	1
C120	3609152153-T	CAP TX 0.0015UF 200V(SAMWHA)	TX0.0015/200V	1
C115	3609472140	CAP TX0.0047/200V	TX0.0047/200V	1
E105	4355708800	CON ASSY 1P (160MM)BLK		

	4255000410	FUSE CLIP 6*31.8		
	1608199520	SIL PAD 900SAC(TO-220)		
	4808999310	CAP SW-040-140		
	1678999910	MAXGAIN TO-220 (BERGQUIST)		

#### INPUT(4005177900)

C308-309 C318-319	3409210141-T	CAP AF RSG 100UF 25V 6 P	100/25(RSG)	4
C303-304 C313-314	S35105604331	CAP CE C 56PF 50V J 0805(2012)	56P(2)	4
C301-302 C311-312	3509471130-T	CAP CE SL 470PF 50V J	470P(2)	4
C307 C310 C317 C320	S35101044344	CAP CE0.1UF 50V J(3216)	0.1/50(3)	4
C306 C316	S35102204339	CAP CL 22PF 50V J 2012	22P(2)	2
C305 C315	S34114700642	CAP SC 47UF 25V SAMWHA	47/25(S)	2
AN102	4355708900	CON ASS'Y 12P (260MM)		1
AN202	4355706400	CON ASS'Y 13P (260MM)		1
AN207	4355706613	CON ASS'Y FLAT 6P (270MM)		1
D301-302 D311-312	S22400505002	DIODE KDS135S HIGH VOLT(KEC)	KDS135S	4
IC301-302	S21101087701	IC OPAMP NE5532AD8 PHI	NE5532A	2
JK301 JK303	4438086210	JACK COMBO NCJ6FI-V NEUTRIK	NCJ6FI-V	2
JK302 JK304	4438086010	JACK XLR(M) NC3MAV NEUTRIK	XLR JACK	2
U1-2	6505955520	PCB BKT MX-400		2
R306 R316	S30101047231	RES TF 100K 1/10W 2012	100K(2)	2
R301-302 R305 R311-312 R315 R323-324	S30101037231	RES TF 10K 1/10W 2012	10K(2)	8
R309 R319	S30101637330	RES TF 16K J 1/8 (2012)	16K(2)	2
R303-304 R313-314	S30102037231	RES TF 20K 1/10W 2012	20K(2)	4
R307 R317	S30103927231	RES TF 3.9K 1/10W 2012	3.9K	2
R310 R320 R330 R340	S30103907231	RES TF 39 1/10W 2012	39(2)	4
R308 R318	S30108227231	RES TF 8.2K 1/10W 2012	8.2K	2
R321 R325	S30108217231	RES TF 820 1/10W 2012	820(2)	2
SW301-302	4628980110	SW PUSH JPS2281EAB JEIL	JPS2281EAB	2
SW303-306	4618499310	SW SLIDE SS84017-0403-5.3T-FN	SS84017	4

#### OUTPUT(4005177910)

E111-114	4355708700	CON ASS'Y 4P (280MM) RED/BLK	CH1	4
E211-214	4355708716	CON ASS'Y 4P (360MM)WHT/BLK	CH2	4
JK1 JK3	4438085910	BINDING POST FCR159706PA CLIFF	FCR159706PA	2
JK2 JK4	4438086110	JACK SPEAKON NL4MD-V NEUTRIK	SPEACON	2

#### DICPLAY(4005177920)

VR400-401	3228067000	VR RV110-40E1 2.5KB ALPHA	2.5KB	2
R400-401	S30342745330	RES MF 274 F 2012	274(2)	2
LD401 LD403 LD405 LD407	2300052100	LED LTL-307G LITEON	GREEN	4
LD400 LD402 LD404 LD406	2300050100	LED LTL-307E LITEON	RED	4
AN103 AN203	4355709021	CON ASS'Y 10P (510MM)		2
	8545993660	LIMITER LED SX-6		

#### NTC(4005177930)

R700-703	2438209990	THERMISTER NTC-2D-30	2 OHM 30A	4
E700-706	4465998210	TERMINAL(250)PCB TAB	250/T	7

#### POWER TOP(4005177800)

C520	S35101044344	CAP CE0.1UF 50V J(3216)	0.1/50(3)	1
R512	3023105455	RES MF 1.05K 1W FR	1.05KF/1W	1
R501-502	2423000999	SW POLY 50VX110 JX3K-T	1.1A 0.15 OHM	2
R514-515 R519	S30101527440	RES TF 1.5KJ 1/4W 3216	1.5K(3)	3
R516 R518	S30101037231	RES TF 10K 1/10W 2012	10K(2)	2
R521	3059121776	RES CE 120 5W J	120/5W	1
CN206	4428588816	WAFER B16P-XL-HDS JST(5MM)	16P	1
C504-515	3409218325	CAP LSW183M1HQ50M JAMICON	18000/50	12
R505	S30101847440	RES TF 180KJ 1/4W 3216	180KF(3)	1
D501-503	2058304100	DIODE IN4148M	1N4148	3
R520	S30102227231	RES TF 2.2K J 1/10W 2012	2.2K(2)	1
BR504	S22201500009	DIODE BRIDGE DBS105G	200V 1A	1

C517-518	3408222249	CAP SD 2200UF 25V (12.5*25)	2200/25(SD)	2
R509 R517	S30102237231	RES TF 22K 1/10W 2012	22K(2)	2
E501-506	4465998210	TERMINAL(250)PCB TAB	250/T	6
R513	S30103907231	RES TF 39 1/10W 2012	39(2)	1
Q504	S20560448002	TR NPN 2N3904 SOT23 HSMC	3904(S)1A	1
Q501 Q503 Q505-506	S20510405004	2N3906S-RTK	3906(S)ZAAD	4
CN107	4428595003	LW5267/LWB0640/2.5MM-03P	3P	1
BR501-503	2058100978	DIODE BRIDGE GL3504 PANJIT	400V 35A	3
R506 R510	S30114645340	RES TF 464K F 1% 3216	464KF(3)	2
C521	3409247071-T	CAP AF RSG 47UF 50V 6 P	47/50(RSG)	1
R508	S30104737231	RES TF 47K 1/10W 2012	47K(2)	1
R507	S30135905230	RES TF 5.9K F 1% 2012	5.9KF(2)	1
R511	S30105137440	RES TF 51K J 3216	51K(3)	1
R522-523	3039560575-T	RES MO 56 2W J RADIAL	56/2W	2
CN209	4428595005	LW5267/LWB0640/2.5MM-05P	5P	1
CN105 CN108	4428595006	LW5267/LWB0640/2.5MM-06P	6P	2
D504	2058510075	DIODE ZENER UZP-7.5BM(1N4737A)	7.5V-1W	1
C519	3569474145-T	CAP CE 0.47UF MULTILAYER	CE474	1
C522	S34111000422	CAP AF SC 10UF 50V 6.3P	EC10/50(S)	1
Q502	S20560400001	TR NPN SBT2222A SOT23 AUK	SBT222A	1
Q507	2028400882	TR NPN TIP31TU FSC	TIP31C	1
C501-503	3609224153-T	CAP TL 0.22UF 250V(SAMWHA)	TL0.22/250	3
AN201	4355709007	CON ASS'Y 7P FLAT (150MM)		1
AN401	4355709013	CON ASS'Y 5P FLAT (270MM)		1
	1608199520	SIL PAD 900SAC(TO-220)		
	4808999310	CAP SW-040-140		

#### POWER BOTTOM (4005177500)

C620	S35101044344	CAP CE0.1UF 50V J(3216)	0.1/50(3)	1
R612	3023105455	RES MF 1.05K 1W FR	1.05KF/1W	1
R601-602	2423000999	SW POLY 50VX110 JX3K-T	1.1A 0.15 OHM	2
R614-615 R619	S30101527440	RES TF 1.5KJ 1/4W 3216	1.5K(3)	3
R616 R618	S30101037231	RES TF 10K 1/10W 2012	10K(2)	1
R621	3059121776	RES CE 120 5W J	120/5W	1
CN106	4428588816	WAFER B16P-XL-HDS JST(5MM)	16P	1
C604-615	3409218325	CAP LSW183M1HQ50M JAMICON	18000/50	12
R605	S30101847440	RES TF 180KJ 1/4W 3216	180KF(3)	1
D601-603	2058304100	DIODE IN4148M	1N4148	3
R620	S30102227231	RES TF 2.2K J 1/10W 2012	2.2K(2)	1
BD604	S22201500009	DIODE BRIDGE DBS105G	200V 1A	1
C617-618	3408222249	CAP SD 2200UF 25V (12.5*25)	2200/25(SD)	2
R609 R617	S30102237231	RES TF 22K 1/10W 2012	22K(2)	2
E601-606	4465998210	TERMINAL(250)PCB TAB	250/T	6
R613	S30103907231	RES TF 39 1/10W 2012	39(2)	1
Q604	S20560448002	TR NPN 2N3904 SOT23 HSMC	3904(S)1A	1
Q601 Q603 Q605-606	S20510405004	2N3906S-RTK	3906(S)ZAAD	4
BD601-603	2058100978	DIODE BRIDGE GL3504 PANJIT	400V 35A	3
C621	3409247071-T	CAP AF RSG 47UF 50V 6 P	47/50(RSG)	1
R608	S30104737231	RES TF 47K 1/10W 2012	47K(2)	1
R607	S30135905230	RES TF 5.9K F 1% 2012	5.9KF(2)	1
R611	S30105137440	RES TF 51K J 3216	51K(3)	1
R623	3039560575-T	RES MO 56 2W J RADIAL	56/2W	1
D604	2058510075	DIODE ZENER UZP-7.5BM(1N4737A)	7.5V-1W	1
C619	3569474145-T	CAP CE 0.47UF MULTILAYER	CE474	1
C622	S34111000422	CAP AF SC 10UF 50V 6.3P	EC10/50(S)	1
Q602	S20560400001	TR NPN SBT2222A SOT23 AUK	SBT222A	1
Q607	2028400882	TR NPN TIP31TU FSC	TIP31C	1
C601-603	3609224153-T	CAP TL 0.22UF 250V(SAMWHA)	TL0.22/250	3
AN101	4355709007	CON ASS'Y 7P FLAT (150MM)		1
AN104	4355706207	CON ASS'Y FLAT 4P (150MM)		1
AN107	4355709011	CON ASS'Y 3P (230MM)		1
AN109	4355709013	CON ASS'Y 5P FLAT (270MM)		1
AN301	4355706305	CON ASS'Y FLAT 5P (120MM)		1
	1608199520	SIL PAD 900SAC(TO-220)		
	4808999310	CAP SW-040-140		

---

**ASS'Y**

	2828055300	TRANS POWER H-3200 100V	J	
	2828055310	TRANS POWER H-3200 120V	E	
	2828055320	TRANS POWER H-3200 220V		
	2828055330	TRANS POWER H-3200 230V	R	
	2828055340	TRANS POWER H-3200 240V	C	
	2828055340	TRANS POWER H-3200 240V	D	
	4308987910	AC CORD ASS'Y (H-3200/4200)	AC CABLE	
	4355708803	CON ASS'Y 1P (100MM)BLK		
	4355708809	CON ASS'Y 16P (190MM)		
	4648099920	SW POWER AJ1-B0-44-635-5C2-C	J, E	
	4648099810	SW POWER AJ1-B0-44-618-5C2-D	, R, C, D	
	5508124621	FUSE SB 31.8MM 30A 125V		
	7308997310	FAN (4715KL-05W-B20-P00) NMB		

