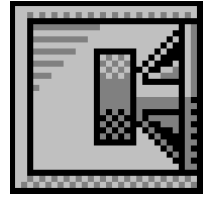


Custom Closed Box Design

By Poweraudio SRL, SC PowerAudio SRL



Box Properties

--Description--

Name:

Type: Closed Box

Shape: Prism, square

--Box Parameters--

Vb = 75.33 liters

Qtc = 0.73

F3 = 50.37 Hz

Fill = minimal

Driver Properties

--Description--

Name:

Type: Standard one-way driver

--Configuration--

No. of Drivers = 1

--Driver Parameters--

Fs = 31 Hz

Qms = 4.44

Vas = 142 liters

Xmax = 8 mm

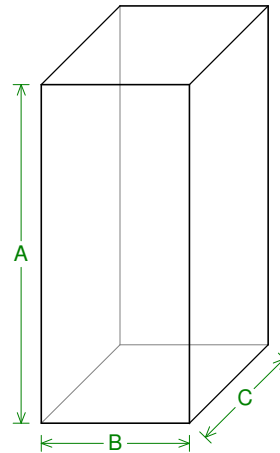
Sd = 540 sq.cm

Qes = 0.56

Re = 5.6 ohms

Z = 8 ohms

Pe = 125 watts



--External Dimensions--

A = 800 mm

B = 350 mm

C = 350 mm

--Internal Dimensions--

A = 764 mm

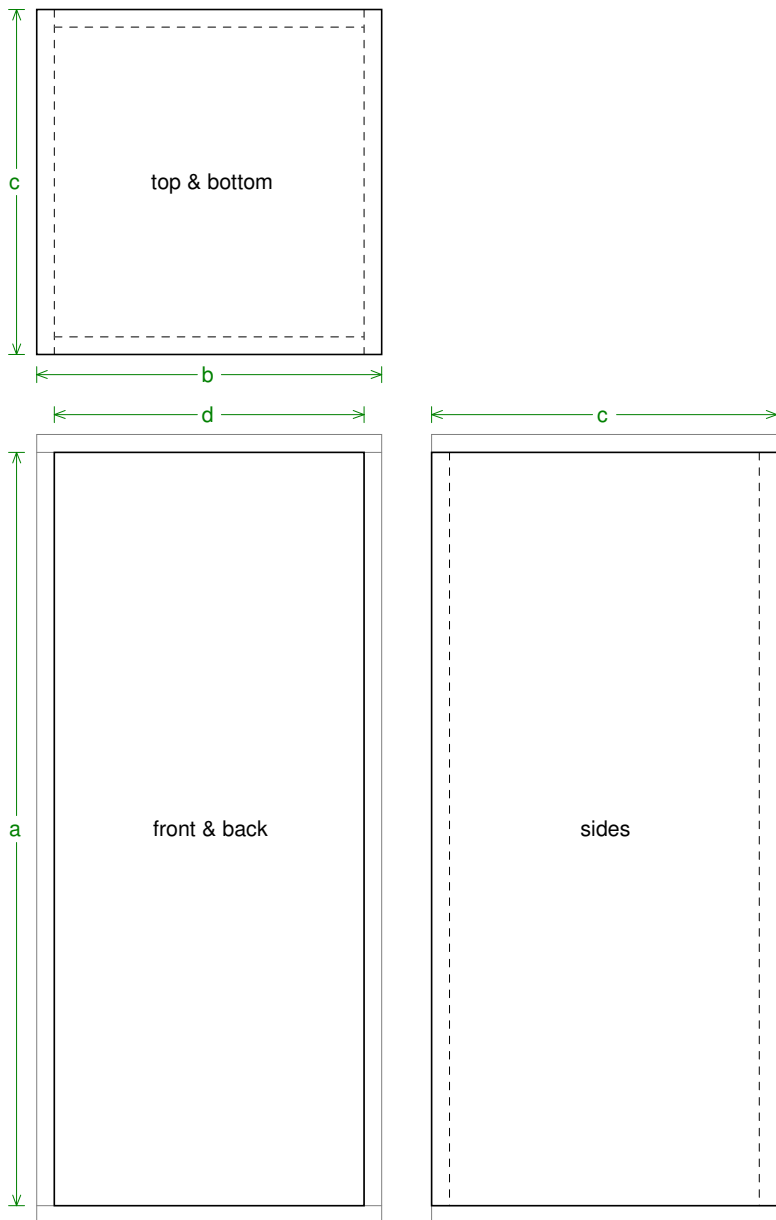
B = 314 mm

C = 314 mm

--Wall Thickness--

Front = 18 mm

Side = 18 mm

**Box Parts**

--Square Prism Box Parts--

1 Top, 1 Bottom: depth (*c*) = 350 mm
width (*b*) = 350, thickness = 18 mm

1 Front, 1 Back: height (*a*) = 764 mm
width (*d*) = 314, thickness = 18 mm

2 Sides: height (*a*) = 764 mm
depth (*c*) = 350, thickness = 18 mm

--Driver Mounting--
Mounting:



Wiring Diagram

