

EFFECTORS

DI-10MII, OD-10MII, CO-10MII CH-10MII, FL-10MII, GE-10MII

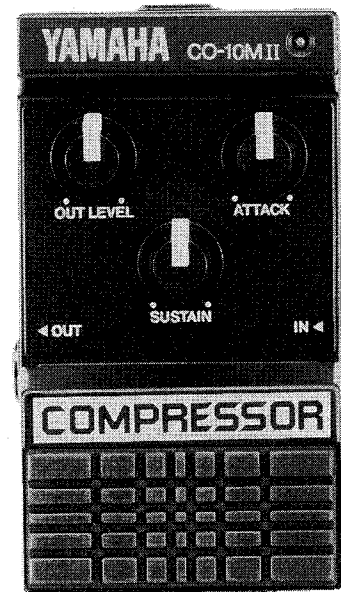
SERVICE MANUAL



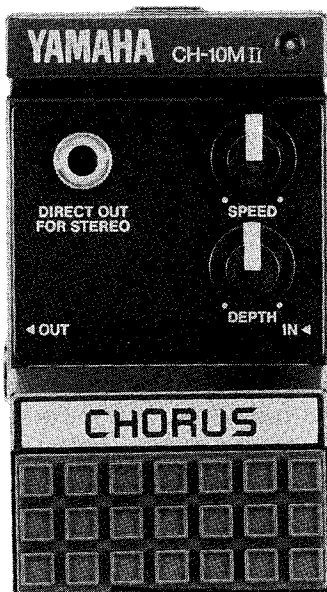
34103070203600 DI-10MII



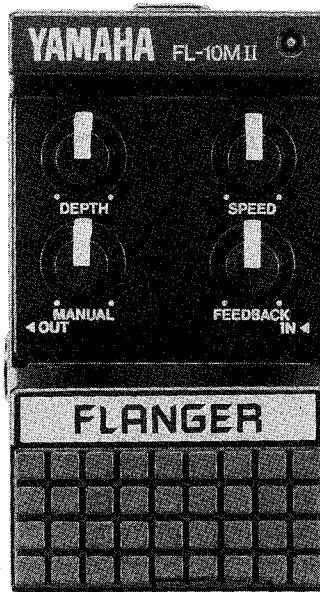
03700 OD-10MII



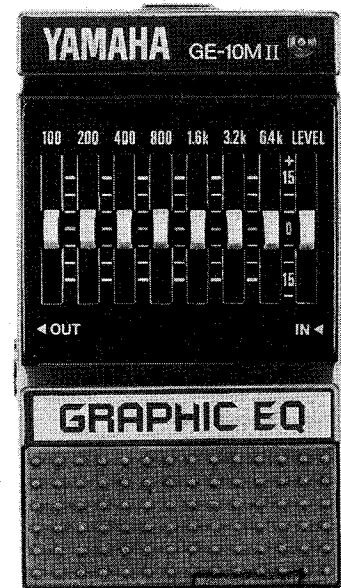
03800 CO-10MII



03900 CH-10MII



04000 FL-10MII



04100 GE-10MII

EFFECTORS



■ CONTENTS

SPECIFICATIONS	1
CIRCUIT DIAGRAM • PRINTED CIRCUITBOARD (PATTERN SIDE)	3
DI-10MII	3
OD-10MII	5
CO-10MII	7
CH-10MII	9
FL-10MII	11
GE-10MII	13
EXPLODED	15
PARTS LIST	16

■ SPECIFICATIONS

● DI-10MII

Input Impedance	1 M Ω
Output Impedance	2 K Ω
Maximum Output Level	600mV (peak to peak at 250Hz)
Noise Level	DIN AUDIO -110dB Input Equivalent @0dB=775mV (Input Short, TONE at max, DISTORTION at max)
Frequency Response	20Hz~100KHz $\pm 0_{-1.5}$ dB (Effect OFF)
Tone Control	± 6 dB, at 2KHz
Gain Control (DISTORTION)	28dB, at 1.3KHz

● OD-10MII

Input Impedance	1 M Ω
Output Impedance	2 K Ω
Maximum Output Level	2.5V (peak, to peak at 250Hz)
Noise Level	DIN AUDIO -108dB Input Equivalent @0dB=775mV (Input Short, TONE at max, DRIVE at max)
Frequency Response	20Hz~100KHz $\pm 0_{-1.5}$ dB (Effect OFF)
Tone Control (TONE)	± 6 dB, at 2KHz (DRIVE at max)
Gain Control (DRIVE)	34dB, MAX at 13KHz

Clipping Ratio	70%, Input 0dB @0dB=775mV (DISTORTION at max)
Function	TONE, DISTORTION, OUT LEVEL, EFFECT FOOT SW, EFFECT INDICATOR, INPUT, OUTPUT
Battery Life	Approx, 42hours Continuously
Power Source	9V dry cell [S-006P(D)], AC Adaptor
Dimensions	71W×56H×126D(mm)
Weight	420g
Accessory	9V dry cell

Function	TONE, DRIVE, OUT LEVEL, EFFECT FOOT SW, EFFECT INDICATOR, INPUT, OUTPUT
Battery Life	Approx, 38hours continuously
Power Source	9V dry cell [S-006P(D)], AC Adaptor
Dimensions	71W×56H×126D(mm)
Weight	420g
Accessory	9V dry cell

●CO-10MII

Input Impedance 1 M Ω
Output Impedance 2 K Ω
Maximum Input Level +6dB, @0dB=775mV, at 250Hz
(ATTACK at min)
Maximum Output Level -6dB, @=775mV, at 250Hz
Noise Level DIN AUDIO-96dB
..... Input Equivalent @0dB=775mV
(Input short, ATTACK at min, SUSTAIN at max)
Frequency Response 20Hz~100KHz $\pm_{1.5}^0$ dB
(Effect OFF)
Maximum Compressibility 40dB, Input+3dB, @0dB=775mV
Operating Characteristics (Input/Output) -42dB~-+6dB/
12dB~-6dB @0dB=775mV

●CH-10MII

Input Impedance 1 M Ω
Output Impedance OUTPUT 5K Ω
DIRECT OUT FOR STEREO 5K Ω
Maximum Level +6dB, @0dB=775mV, at 250Hz
(DEPTH at min)
Maximum Output Level +6dB, @0dB=775mV, at 250Hz
(DEPTH at min)
Noise Level DIN AUDIO-90dB
..... Input Equivalent @0dB=775mV
(Input Short, DEPTH at min)
Frequency Response 20Hz~100KHz $\pm_{1.5}^0$ dB
(Effect OFF)

●FL-10MII

Input Impedance 1 M Ω
Output Impedance 2 K Ω
Maximum Input Level +6dB, @0dB=775mV
(at 250Hz, MANUAL at min, FEEDBACK at min)
Maximum Output Level +6dB, @0dB=775mV
(at 250Hz, MANUAL at min)
Noise Level DIN AUDIO-90dB
..... Input Equivalent @0dB=775mV
(Input Short, MANUAL at max)
Frequency Response 20Hz~100KHz $\pm_{1.5}^0$ dB
(Effect OFF)
Delay Time 1.5msec~18msec

●GE-10MII

Input Impedance 1 M Ω
Output Impedance 2 K Ω
Maximum Input Level +8dB, @0dB=775mV
(at 1KHz, LEVEL at flat)
Maximum Output Level +8dB, @0dB=775mV
(at 1KHz, LEVEL at flat)
Noise Level DIN AUDIO -96dB, @0dB=775mV
(10K Ω Short, EQUALIZING VOLUME
and LEVEL at flat)
Frequency Response 20Hz~100KHz \pm_{3}^{+1} dB
(Effect OFF)

Attack Time 5msec (ATTACK min)
8.3msec (ATTACK max)
Release Time 1sec (ATTACK min)
100msec (ATTACK max)
Functions SUSTAIN, OUT LEVEL, ATTACK
(min/max), EFFECT FOOT SW,
EFFECT INDICATOR, INPUT,
OUTPUT
Battery Life Approx, 38hours Continuously
Power Source 9V dry cell [S-006P(D)], AC Adaptor
Dimensions 71W \times 56H \times 126D(mm)
Weight 420g
Accessory 9V dry cell

Delay Time 0.5msec~2msec
Modulation Speed (SPEED) 0.1Hz~10Hz
Function SPEED, DEPTH, EFFECT FOOT
SW, EFFECT INDICATOR, INPUT,
OUTPUT, DIRECT OUT FOR
STEREO
Battery Life Approx, 10hours Continuously
Power Source 9V dry cell [S-006P(D)], AC Adaptor
Dimensions 71W \times 56H \times 126D(mm)
Weight 430g
Accessory 9V dry cell

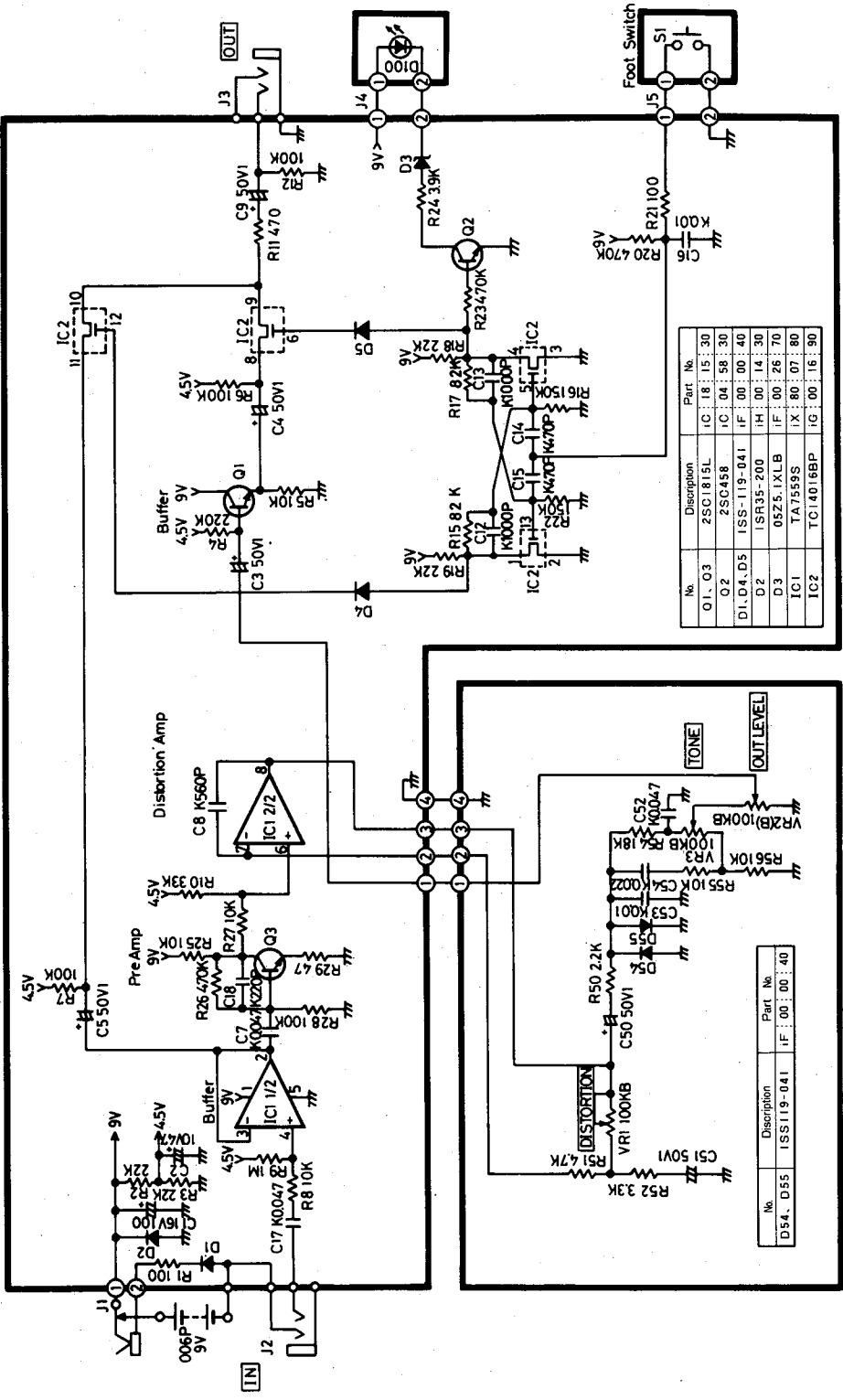
Modulation Speed (SPEED) 0.1Hz~10Hz
Feedback (FEEDBACK) 0~90%
Function SPEED, DEPTH, FEEDBACK,
MANUAL, EFFECT FOOT SW,
EFFECT INDICATOR, INPUT,
OUTPUT
Battery Life Approx, 8hours Continuously
Power Source 9V dry cell [S-006P(D)], AC Adaptor
Dimensions 71W \times 56H \times 126D(mm)
Weight 430g
Accessory 9V dry cell

Equalizing Volume ± 15 dB
(7elements variable continuously
100Hz, 200Hz, 800Hz, 1.6KHz, 3.2KHz, 6.4KHz)
Level Control (LEVEL) ± 15 dB(Continuous variable)
Function EQUALIZING VOLUME, LEVEL,
EFFECT FOOT SW, EFFECT
INDICATOR, INPUT, OUTPUT
Battery Life Approx, 15hours Continuously
Power Source 9V dry cell [S-006P(D)], AC Adaptor
Dimensions 71W \times 56H \times 126D(mm)
Weight 470g
Accessory 9V dry cell

DI-10M II, OD-10M II
CO-10M II, CH-10M II
FL-10M II, GE-10M II

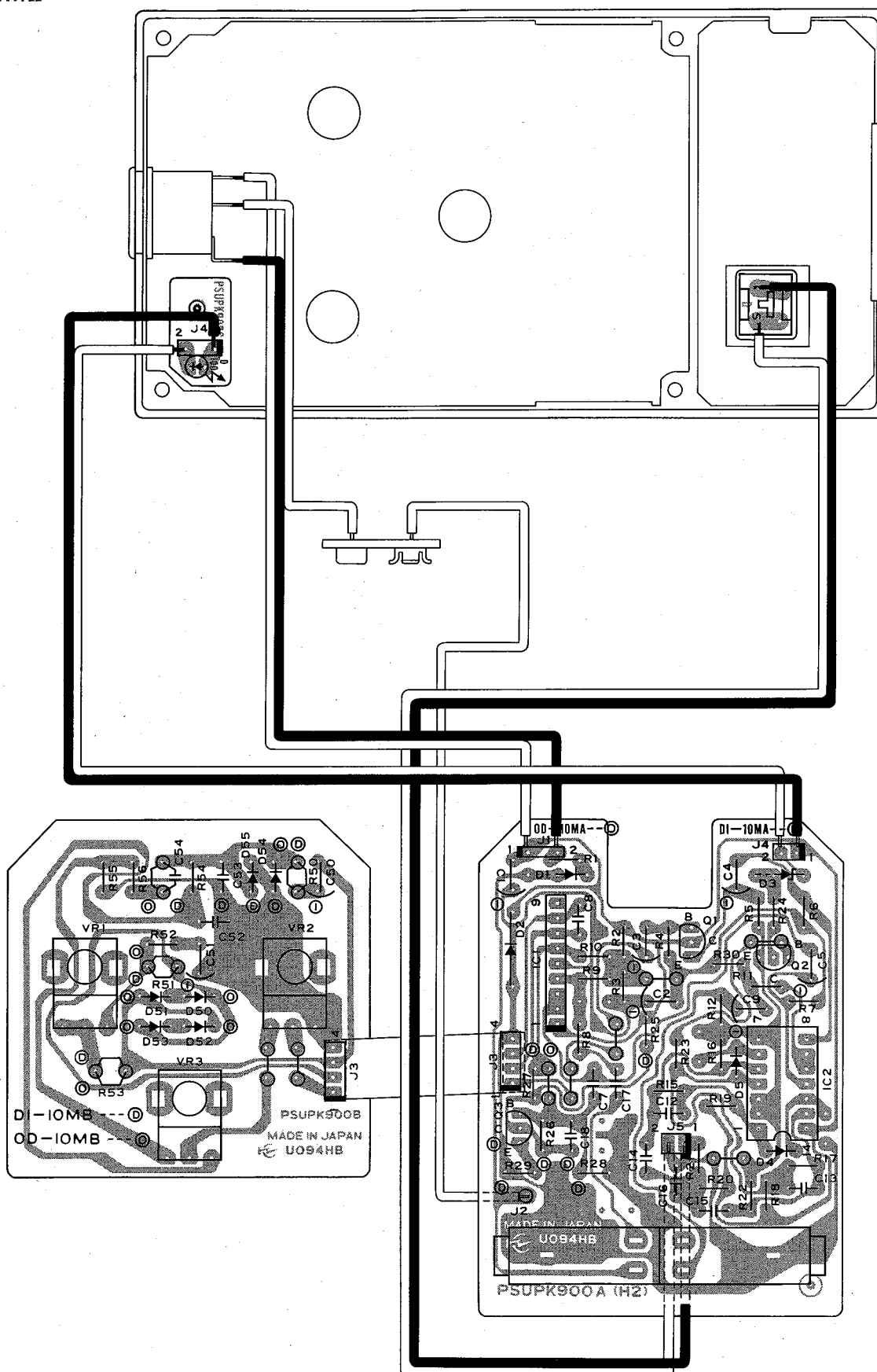
CIRCUIT DIAGRAM
● DI-10M II

EFFECTORS



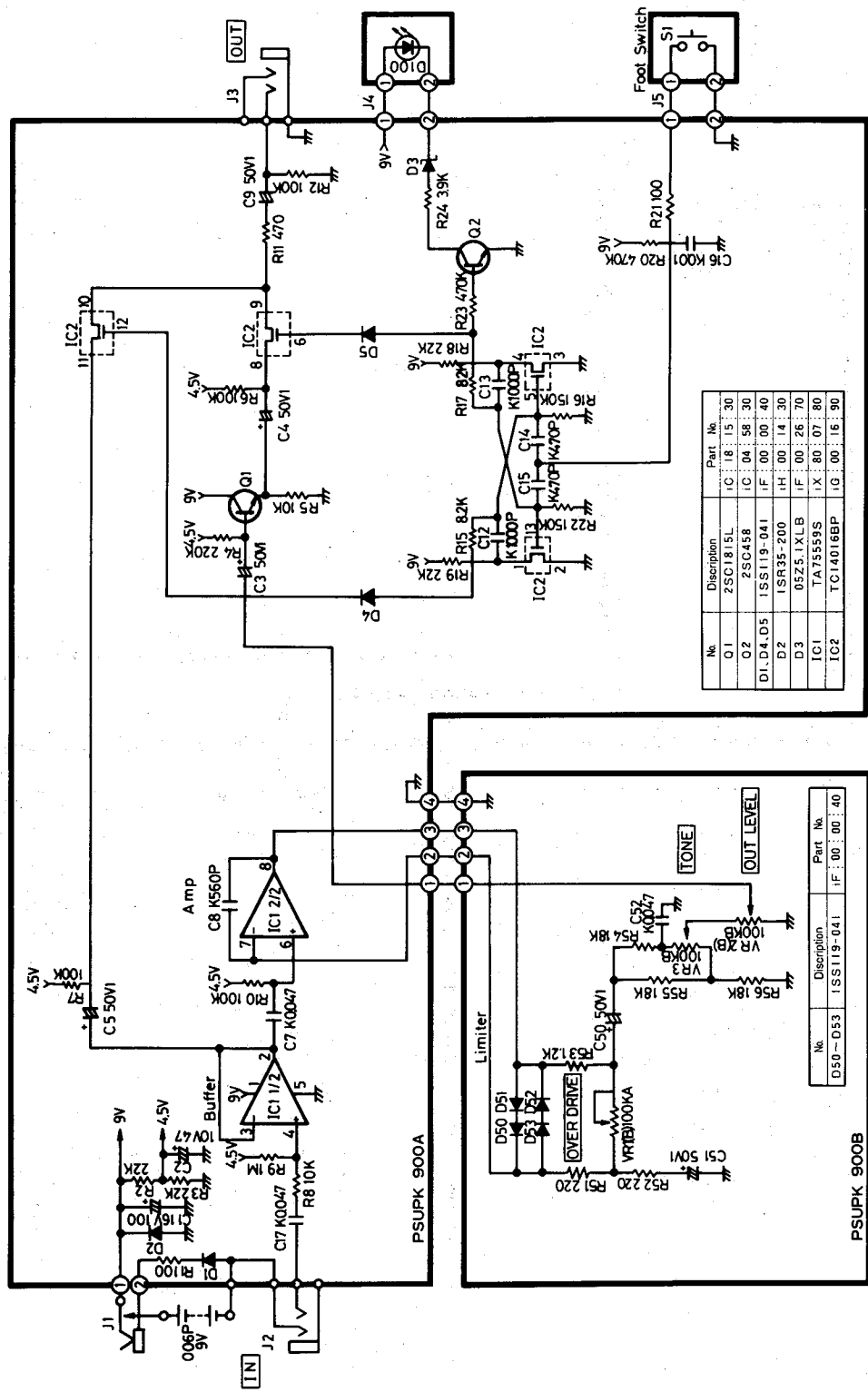
■PRINTED CIRCUIT BOARD~PATTERN SIDE

●DI-10MII

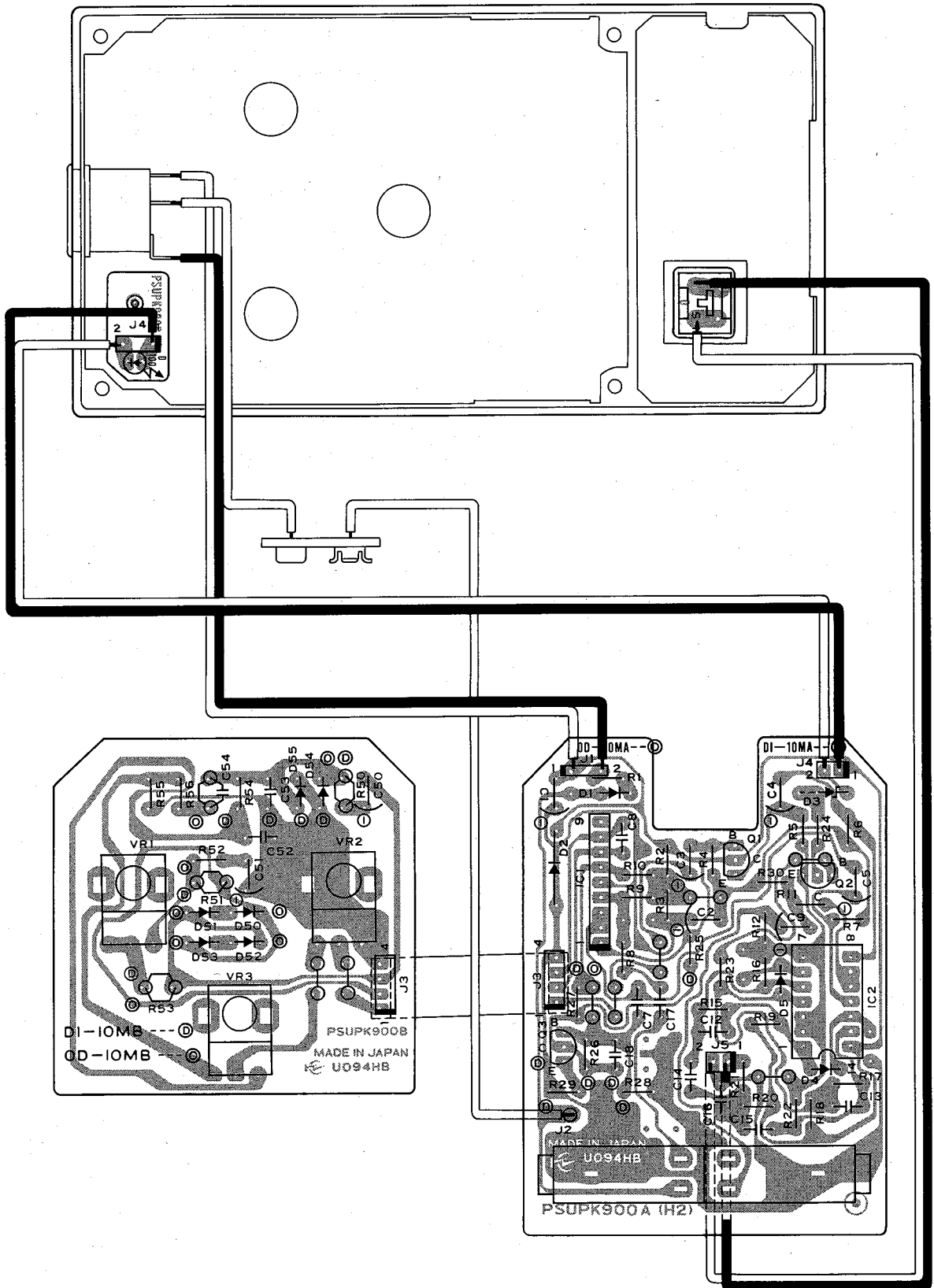


●OD-10M II

EFFECTORS

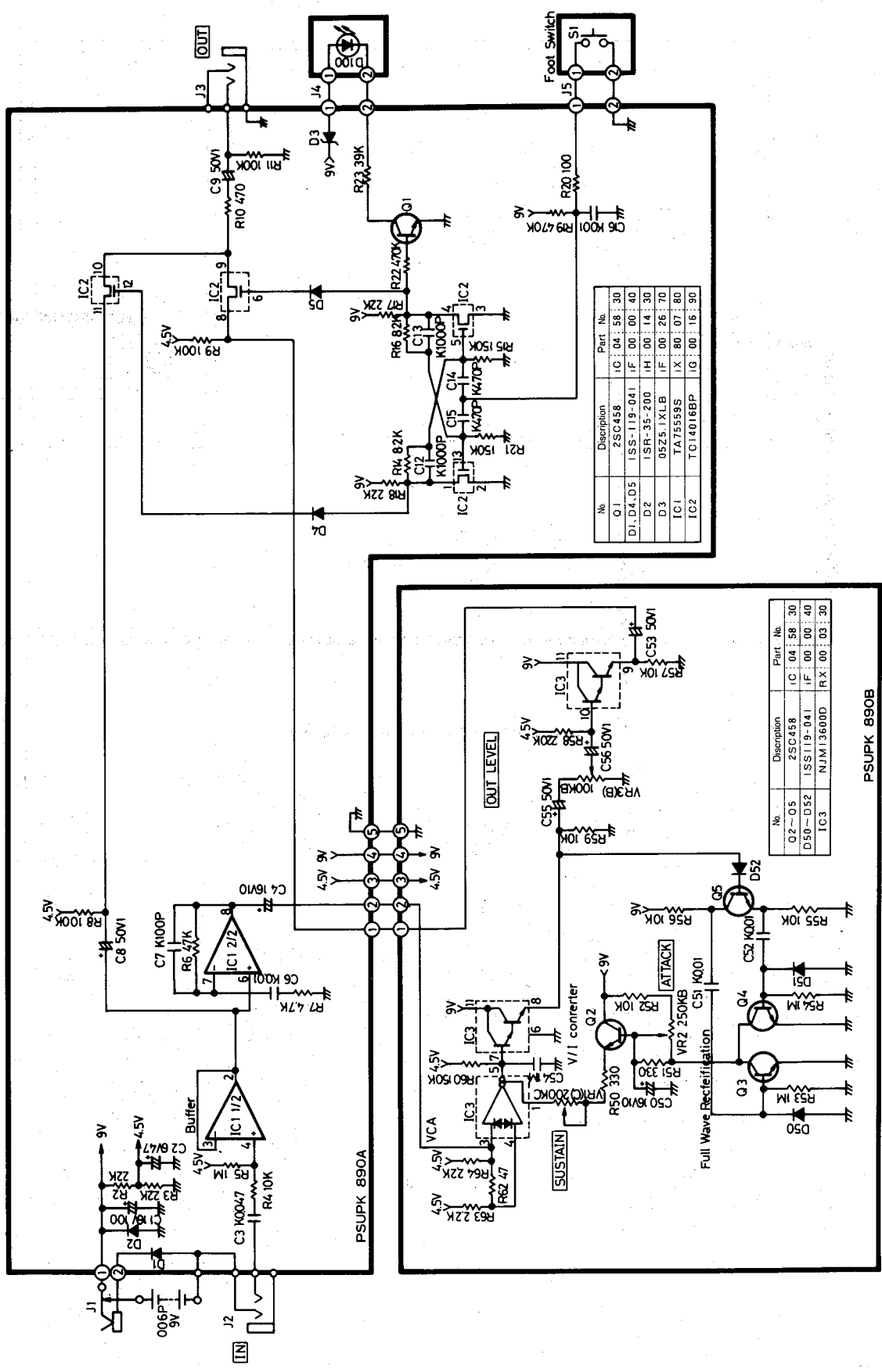


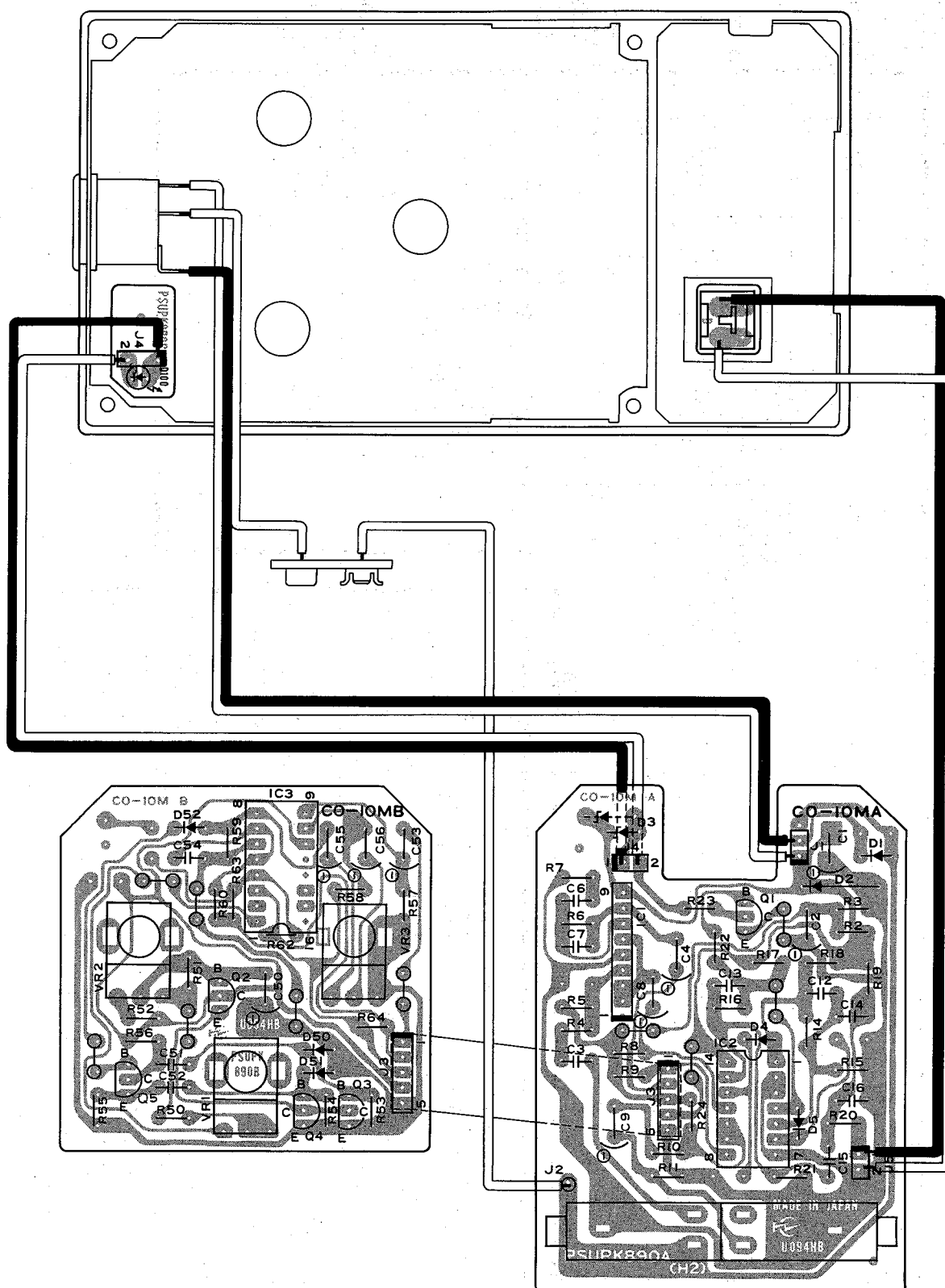
●OD-10MII



●CO-10M II

EFFECTORS

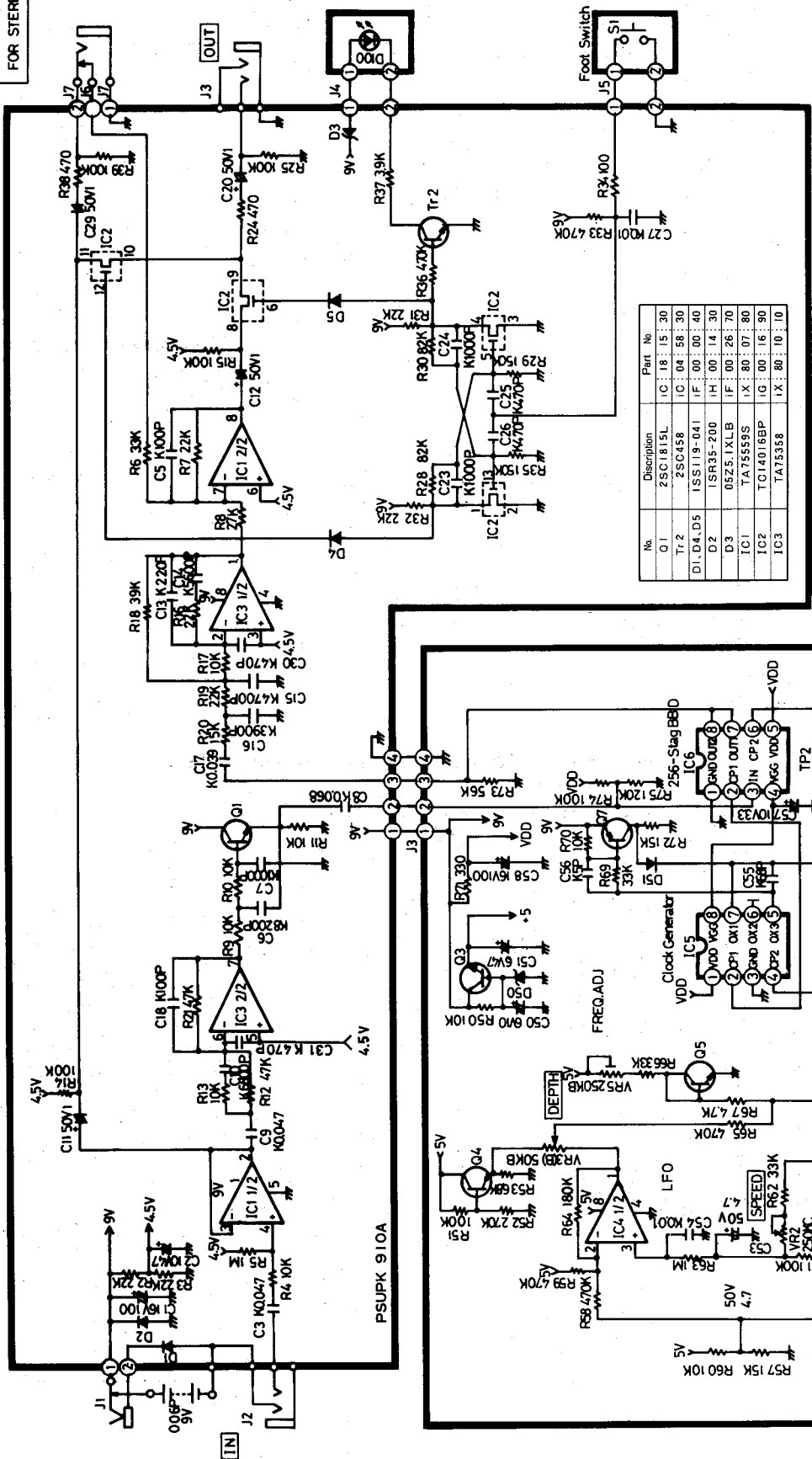




●CH-10M II

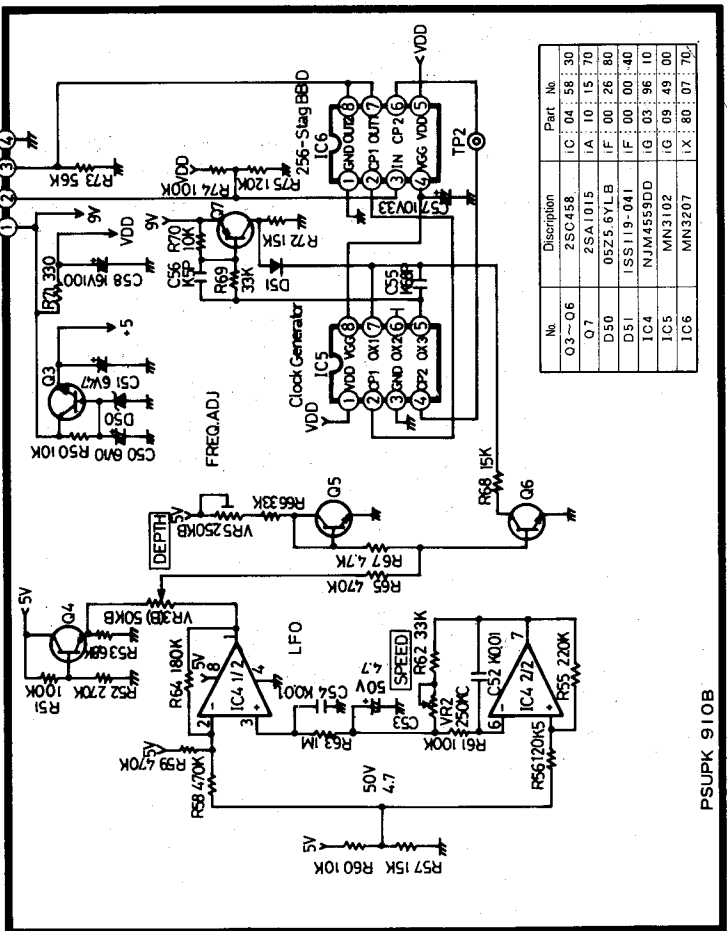
EFFECTORS

DIRECT OUT
FOR STEREO



No.	Description	Part No.
Q1	2SC1815L	IC 18 15 30
Tr 2	2SC458	IC 04 58 30
DI, DA, DS	ISS119-041	IF 00 00 40
D2	ISR35-200	IF 00 14 30
D3	05Z5-1XLB	IF 00 26 70
IC1	TA7555S	IX 80 07 80
IC2	TC14016BP	IG 00 16 90
IC3	TA7555S	IX 80 10 10

No.	Description	Part No.
O3-O6	2SC458	IC 04 58 30
O7	2SA1015	IA 10 15 70
D50	05Z5-6YLB	IF 00 26 80
D51	ISS119-041	IF 00 00 40
IC4	NJM4559DD	IG 03 96 10
IC5	MN3102	IG 09 49 00
IC6	MN3207	IX 80 07 70



PSUPK 910B

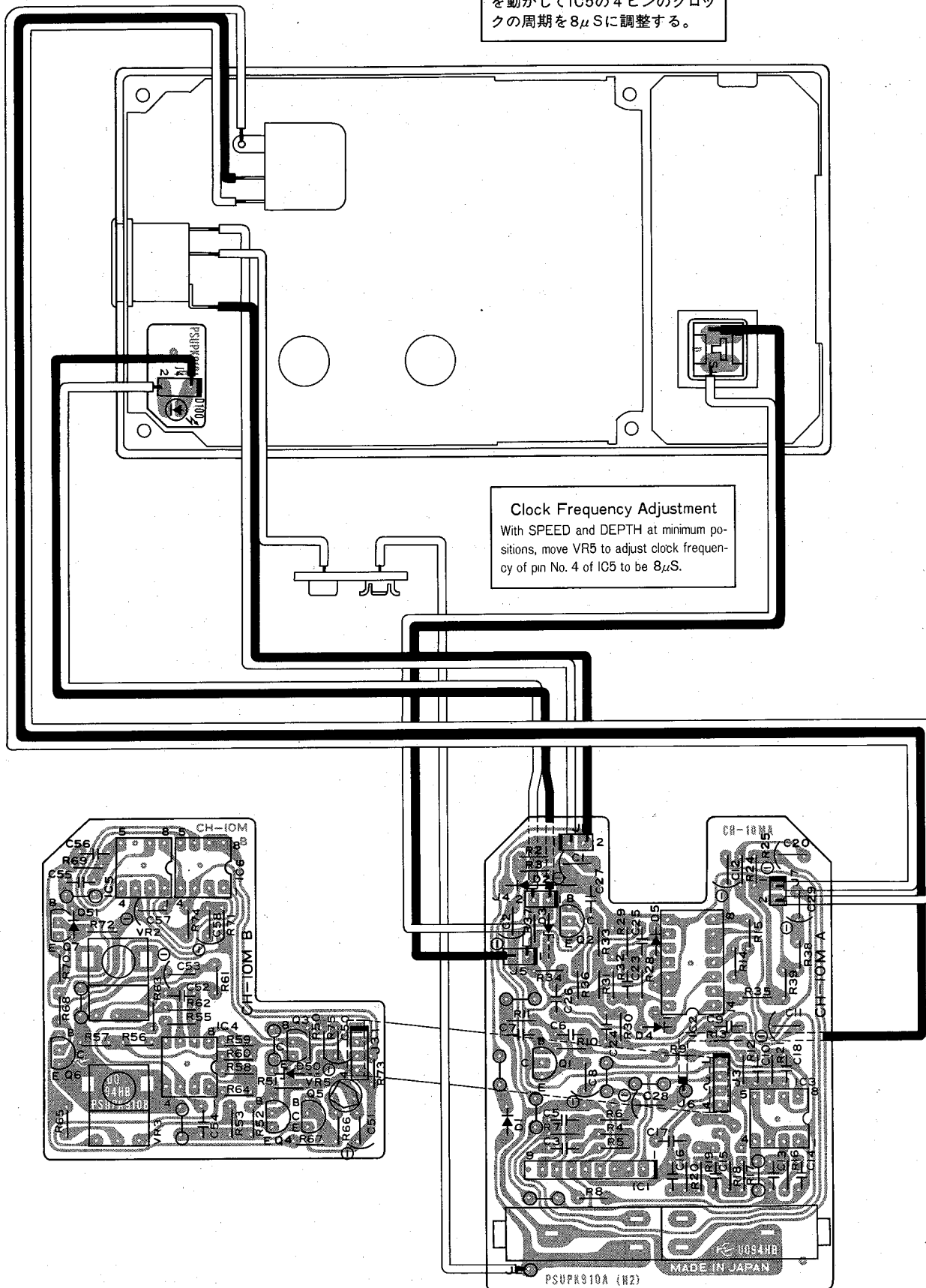
●CH-10MII

クロック周波数の調整

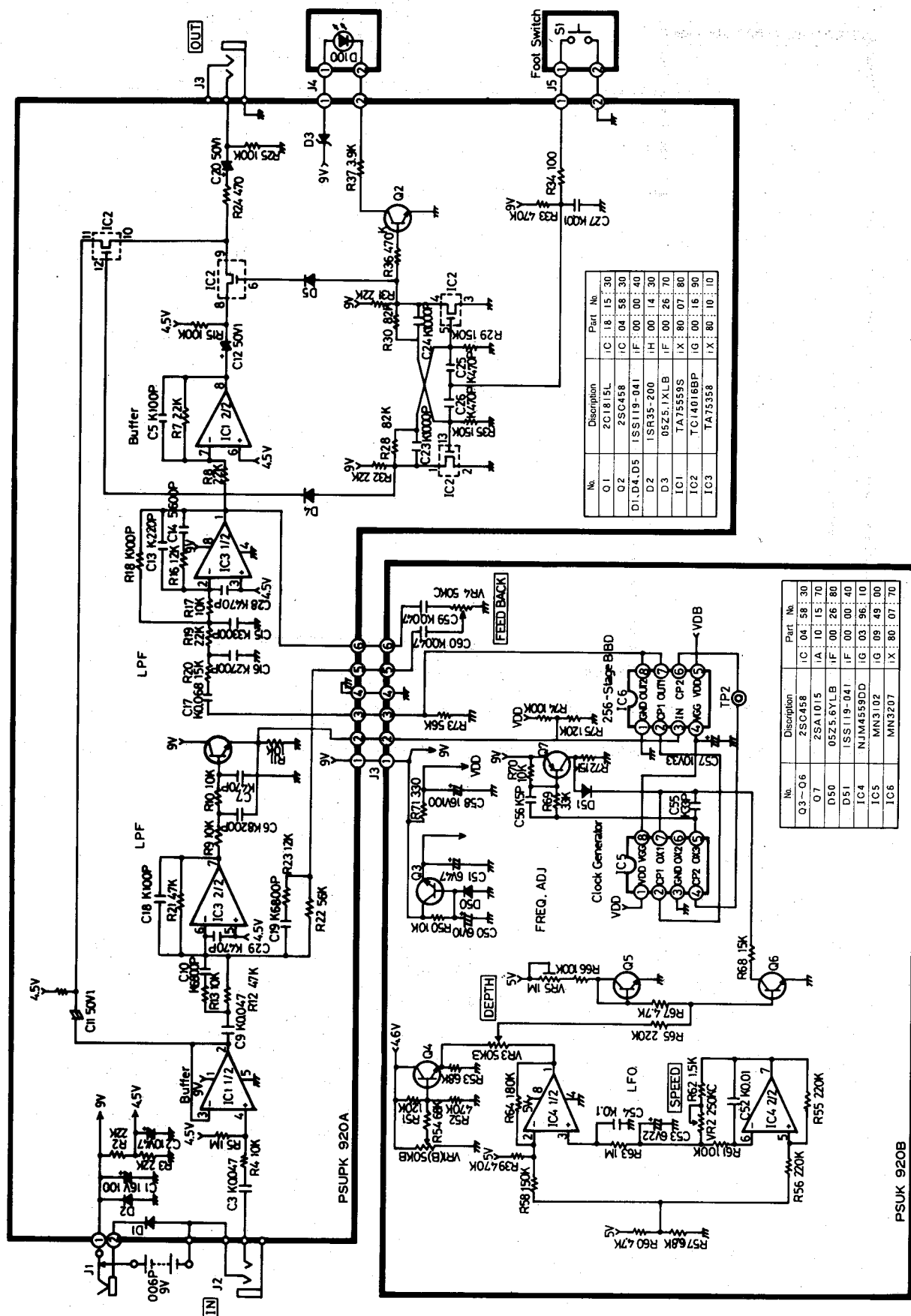
SPEED, DEPTHをMINにし、VR5
を動かしてIC5の4ピンのクロッ
クの周期を8 μ Sに調整する。

Clock Frequency Adjustment

With SPEED and DEPTH at minimum po-
sitions, move VR5 to adjust clock frequen-
cy of pin No. 4 of IC5 to be 8 μ S.



● FL-10M II

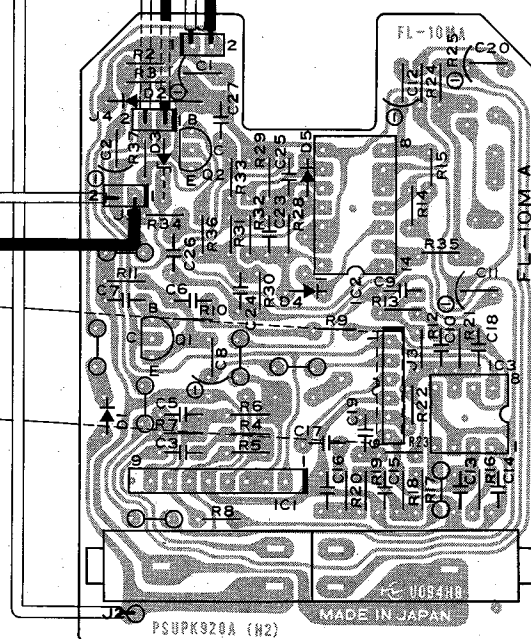
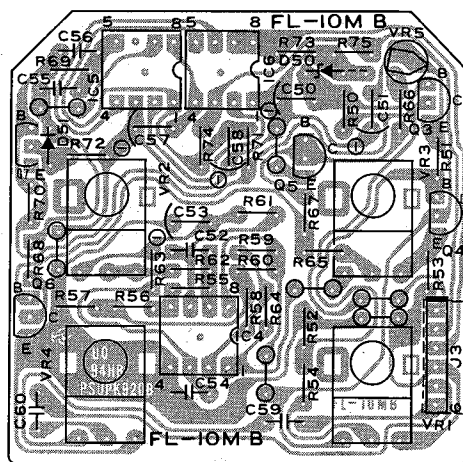
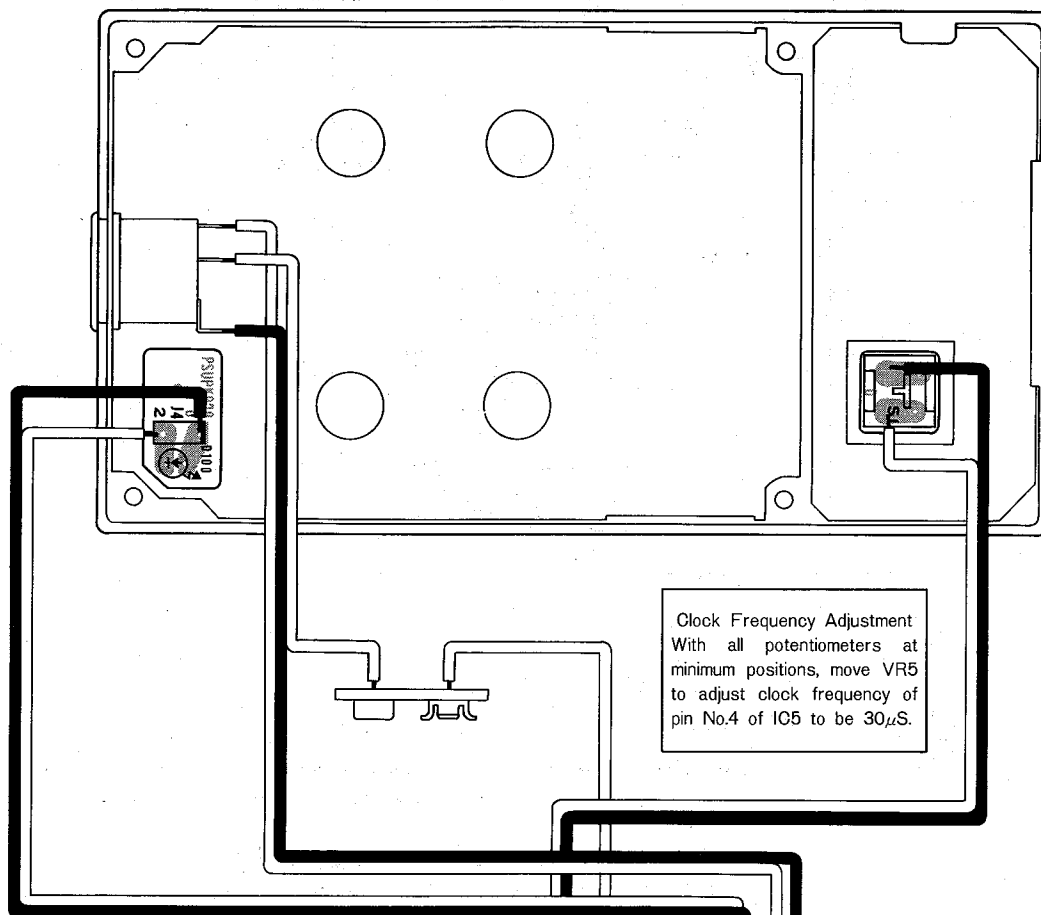


●FL-10M II

クロック周波数の調整

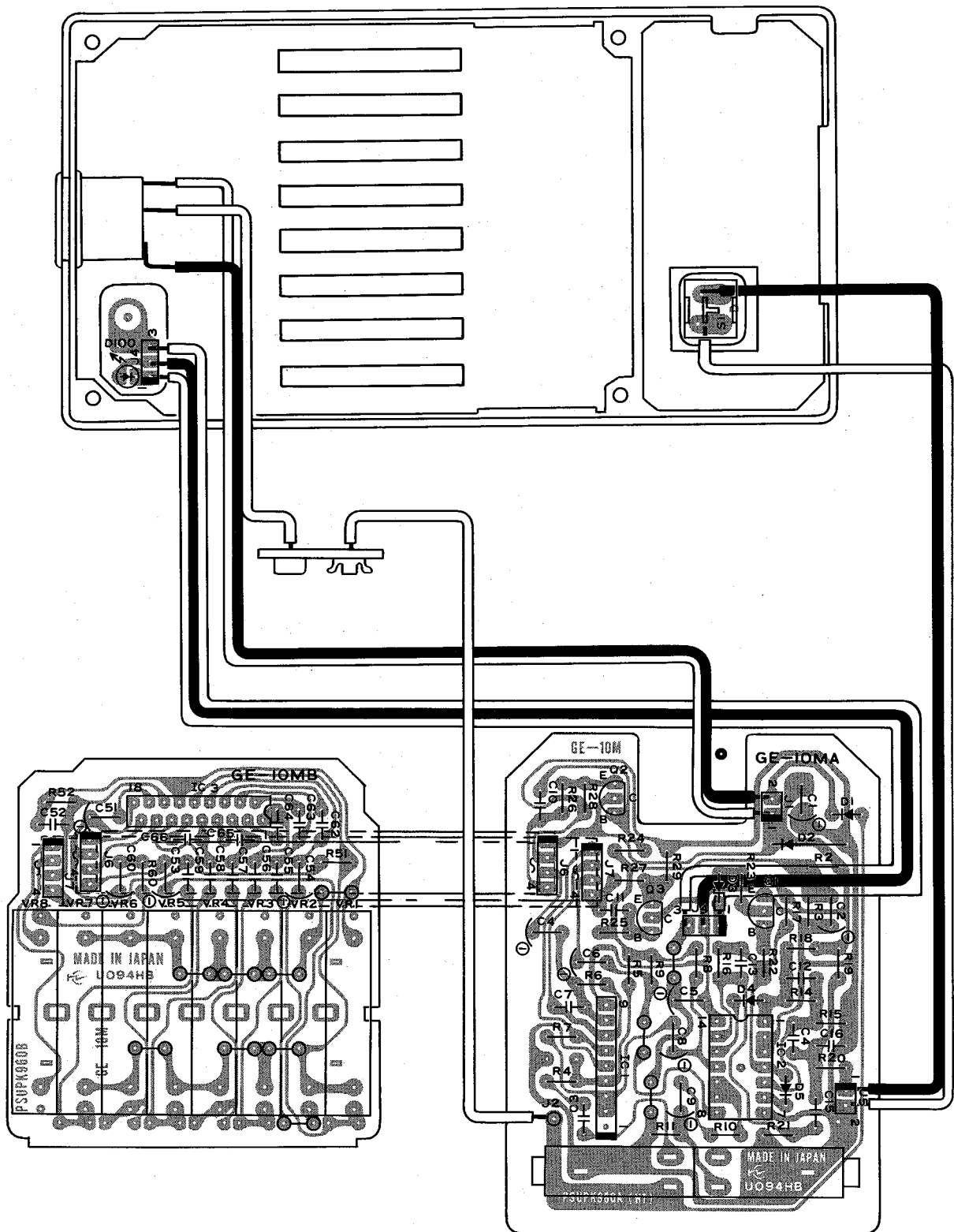
VRをすべてMINにし、VR5
を動かし、IC5の4ピンの
クロックの周期を $30\mu\text{S}$ に
調整する。

Clock Frequency Adjustment
With all potentiometers at
minimum positions, move VR5
to adjust clock frequency of
pin No.4 of IC5 to be $30\mu\text{S}$.



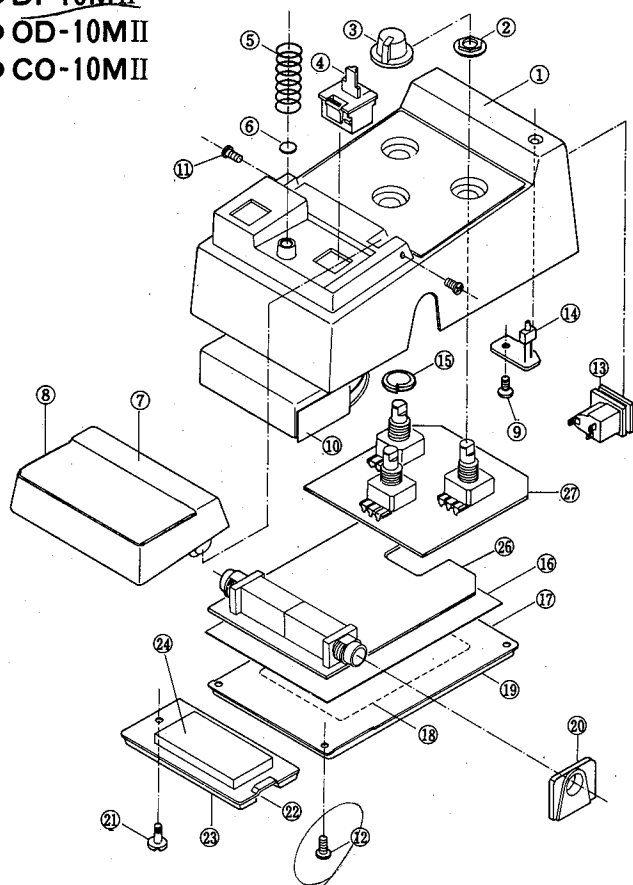
[illegible]

● GE-10MII

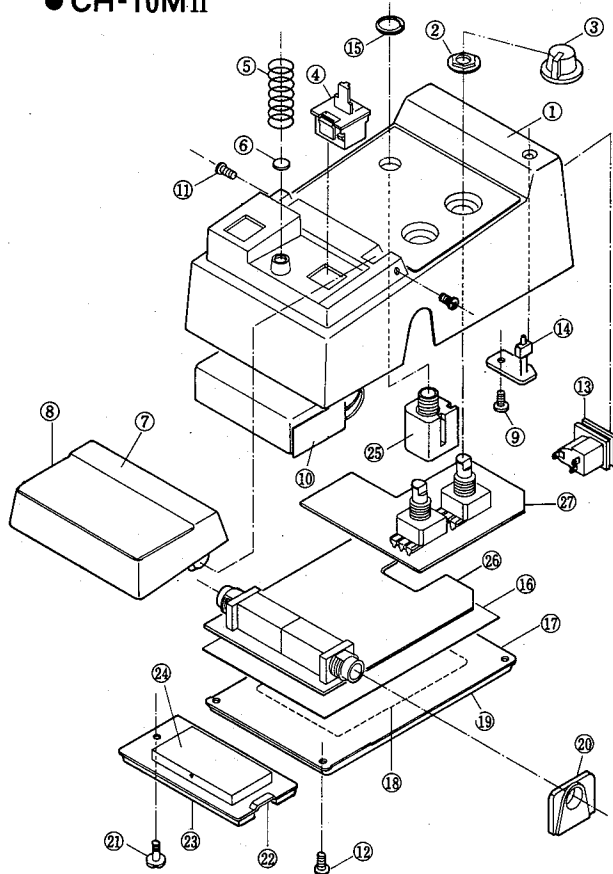


EXPLODED VIEW (MECHANISM CHASSIS UNIT)

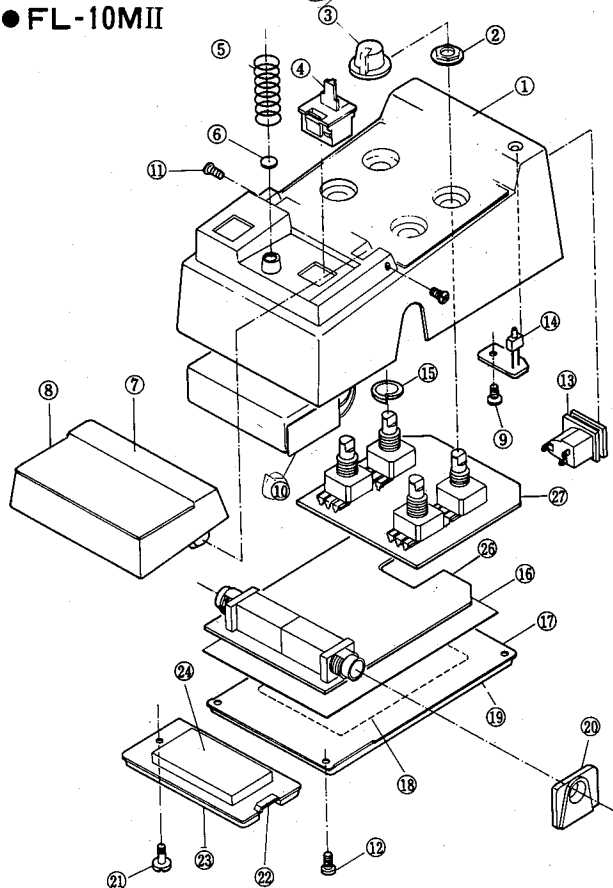
- DI-10MII
- OD-10MII
- CO-10MII



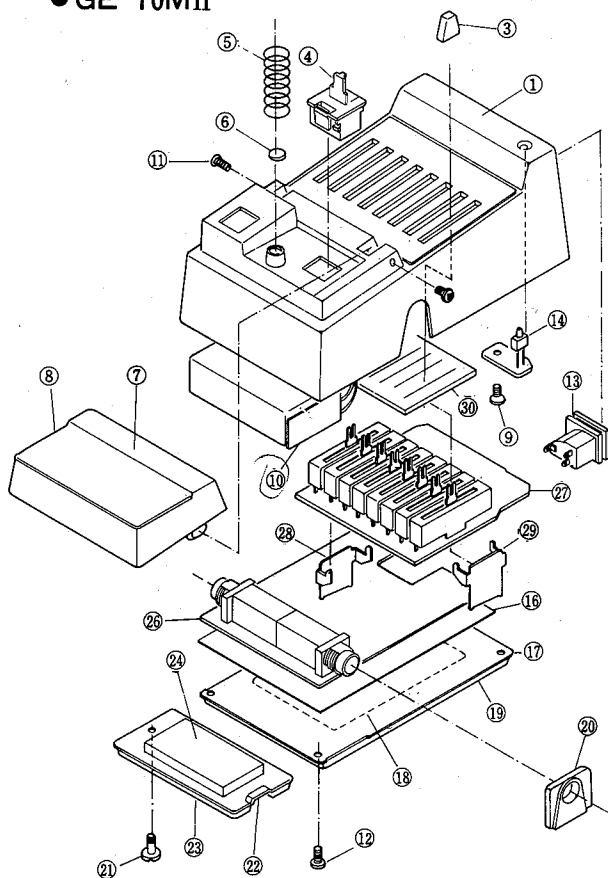
- CH-10MII



- FL-10MII



- GE-10MII



PART LIST (MECHANISM CHASSIS UNIT)

Ref. No.	Part No.	Description	部 品 名	Remarks	Common Model	Markets	ランク
※ 1	XX 80 92 20	Case	PSKCK111KA ケ ー ス	DI-10MII			
※ "	XX 80 92 30	"	PSKCK111KB "	OD-10MII			
※ "	XX 80 92 40	"	PSKCK111KC "	CO-10MII			
※ "	XX 80 92 50	"	PSKCK110KA "	FL-10MII			
※ "	XX 80 92 60	"	PSKCK112KA "	CH-10MII			
※ "	XX 80 92 70	"	PSKCK113KA "	GE-10MII			
2	LX 20 00 60	Nut	9φ ナ ッ ト	DI, OD, CO, FL, CH			010
※ 3	XX 80 92 80	Knob	PSBNK40A ツ マ ミ	DI10MII			
※ "	XX 80 92 90	"	PSBDK10A "	GE-10MII			
※ "	XX 80 94 20	"	PSBNK40E "	FL-10MII			
※ "	XX 80 94 30	"	PSBDK10A "	GE-10MII			
※ "	XX 80 94 40	"	PSBNK40B "	OD-10MII			
※ "	XX 80 94 50	"	PSBNK40C "	CO-10MII			
※ "	XX 80 94 60	"	PSBNK40D "	CH-10MII			
4	KX 80 00 80	Soft Switch	PSSHK44 ソフト・スイッチ				07※
5	XX 80 30 70	Pedal Spring	PSUSK20 ペダル・スプリング				010
6	XX 80 30 80	Buffer Rubber	PSHGK472 緩 衝 ゴ ム				040
※ 7	XX 80 93 00	Pedal	PSKCK120KA ベ ダ ル	DI-10MII			
※ "	XX 80 93 10	"	PSKCK120KB "	OD-10MII			
※ "	XX 80 93 20	"	PSKCK120KC "	CO-10MII			
※ "	XX 80 93 30	"	PSKCK120KE "	FL-10MII			
※ "	XX 80 93 40	"	PSKCK120KD "	CH-10MII			
※ "	XX 80 93 50	"	PSKCK120KF "	GE-10MII			
※ 8	XX 80 93 60	Pedal Rubber	PSHGK480 ベ ダ ル ・ ゴ ム	DI-10MII			
※ "	XX 80 93 70	"	PSHGK484 "	FL-10MII			
※ "	XX 80 93 80	"	PSHGK485 "	GE-10MII			
※ "	XX 80 93 90	"	PSHGK481 "	OD-10MII			
※ "	XX 80 94 00	"	PSHGK482 "	CO-10MII			
※ "	XX 80 94 10	"	PSHGK483 "	CH-10MII			
9	ED 33 00 60	Bind Head Screw	M3×6 BI バインド小ネジ				010
10	XX 80 32 20	Battery Terminal	PSJJK1 電 池 端 子				050
11	ED 33 00 86	Bind Head Screw	M3×8 BI バインド小ネジ				010
12	ED 33 00 60	"	M3×6 BI "				010
13	LX 80 02 60	External Terminal	PSJJK25 外 部 電 源 端 子				03※
14	iF 00 31 70	LED	LN221RP L E D				020
15	EV 30 01 00	Spring Washer	10φYe スプリング・ワッシャ				010
16	XX 80 31 70	Insulated Sheet	PSMXK33 絶 縁 シ ー ト				020
17	XX 80 31 50	Bottom Cover	PSKUK140 底 板				020
18	XX 80 32 50	Caution Label	PSQTK4040 注 意 書				030
19	XX 80 31 60	Bottom Rubber	PSHGK473 底 板 ゴ ム				040
20	XX 80 31 80	Phone Jack Cover	PSG XK89 ホーン・ジャック・カバー				010
21	XX 80 32 10	Screw, Battery Cover	PSHDK5 電 池 カバー止ネジ				010
22	XX 80 31 90	Battery Cover	PSKUK150 電 池 カ バ ー				020
23	XX 80 32 00	Battery Cover Rubber	PSHGK474 電 池 カバー・ゴム				030
24	XX 80 34 10	Sponge	ス ポ ン ジ				01※
25	LX 80 02 70	Phone Jack	PSJJK26 ホーン・ジャック	CH-10MII	CH-10M		04※
26	XX 80 32 60	P.C. Board Assembly, Jack	PDI-10MA ジャック・シート	DI-10MII	DI-10M		120
"	XX 80 32 80	"	POD-10MA "	OD-10MII	OD-10M		120
"	XX 80 33 00	"	PCO-10MA "	CO-10MII	CO-10M		130
"	XX 80 33 20	"	PFL-10MA "	FL-10MII	FL-10M		150
"	XX 80 33 40	"	PCH-10MA "	CH-10MII	CH-10M		150
"	XX 80 33 90	"	"	GE-10MII	GE-10M		15※
27	XX 80 32 70	P.C. Board Assembly, Vol.	PDI-10MB V o l ・ シ ー ト	DI-10MII	DI-10M		120

※New Parts (新規部品)

Ref. No.	Part No.	Description	部 品 名	Remarks	Common Model	Markets	ランク
※ 27	XX 80 32 90	P.C. Board Assembly, Vol.	POD-10MB	V o l ・ シ ー ト	OD-10MII	OD-10M	120
※ "	XX 80 33 10	"	PCO-10MB	"	CO-10MII	CO-10M	140
※ "	XX 80 33 30	"	PFL-10MB	"	FL-10MII	FL-10M	180
※ "	XX 80 33 50	"	PCH-10MB	"	CH-10MII	CH-10M	170
※ "	XX 80 34 00	"	"	"	GE-10MII	GE-10M	19※
※ 28	XX 80 34 30	P Base Angle (left)	P ベ ー ス 金 具 (左)	GE-10MII	GE-10M		030
※ 29	XX 80 34 40	P Base Angle (right)	P ベ ー ス 金 具 (右)	GE-10MII	GE-10M		030
※ 30	XX 80 34 20	Vol cover	ボ リ ュ ー ム カ バ ー	GE-10MII	GE-10M		020

■ PARTS LIST (ELECTRICITY)

Ref. No.	Part No.	Description	部 品 名	Remarks	Common Model	Markets	ランク
※	iG 00 16 90	IC	TC4016BP	I C			040
※	iX 60 07 80	"	TA75559S	"			081
※	RX 00 03 30	"	NJM13600D	"			040
※	iG 10 70 00	"	NJM072D	"			010
※	iX 80 07 70	"	MN3207	"			151
※	iX 80 09 30	"	BA7812L	"	IC3		08※
	iG 12 06 00	"	MN3209	"			080
	iG 09 49 00	"	MN3102	"			050
	iG 03 96 10	"	NJM4559DD	"			040
		"	TA75358	"			
	iA 10 15 70	Transistor	2SA1015(Y, O)	ト ラ ン ジ ス タ			031
	iC 04 58 30	"	2SC458	"			031
	iC 18 15 30	"	2SC1815	"			031
		Diode	1SS119	"	⇒iF000040		
	iF 00 00 40	"	1S1555	"			010
		"	1SR35-200	"	⇒iH001430		
	iH 00 14 30	"	1SR35-100	"			010
	iF 00 26 70	Zener Diode	05Z5.1 XLB	ツェナー・ダイオード			010
※	HX 80 02 70	Rotary Pot.	100KB	ロータリーボリューム			031
※	HX 80 02 80	"	200KC	"			031
※	HX 80 02 90	"	250KB	"			031
※	HX 80 03 00	"	250KC	"			031
※	HX 80 03 10	"	50KB	"			041
※	HX 80 03 20	"	50KC	"			031
※	HX 80 03 40	Trim Pot.	1MB	半 固 定 ボ リ ュ ー ム			020
※	HX 80 04 00	Rotary Pot.	EVAHIOSIOG25	ボ リ ュ ー ム	VR1~VR8	GE-10MII	04※

※New Parts (新規部品)

YAMAHA

EFFECTORS