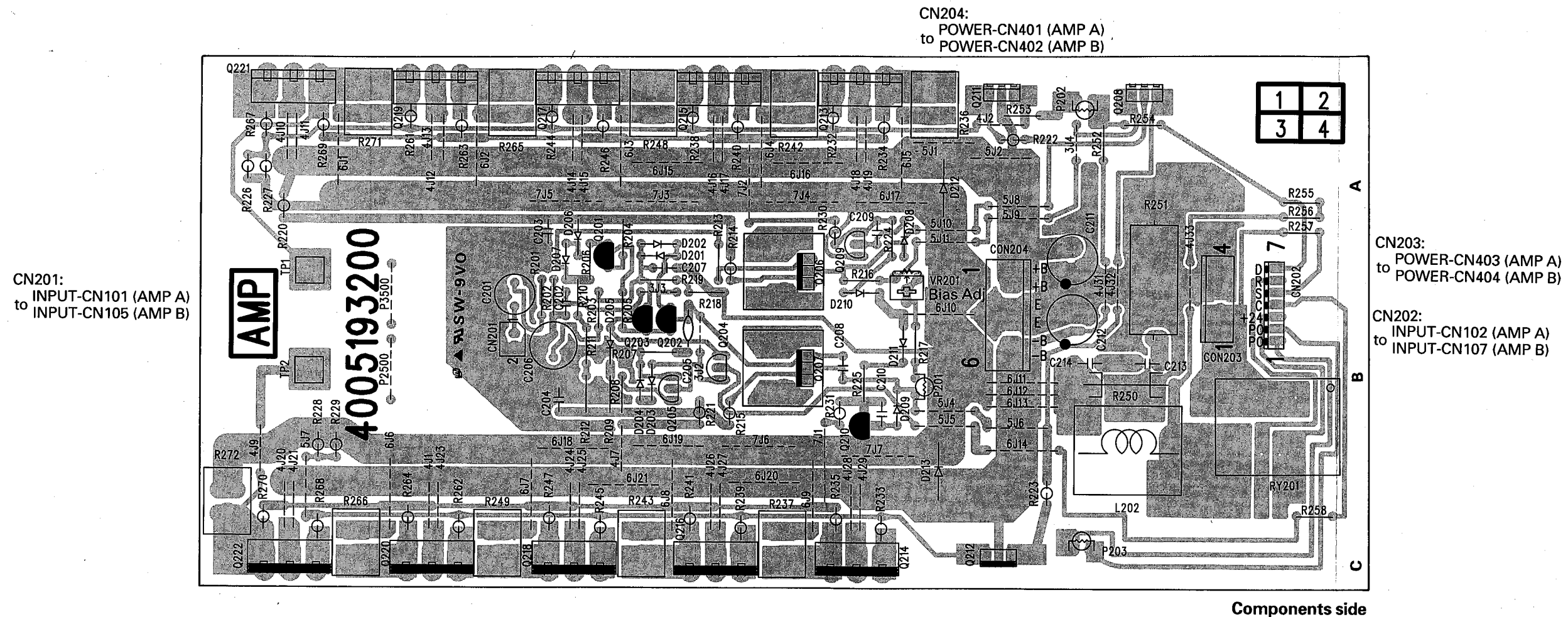


■ CIRCUIT BOARDS

● AMP Circuit Board (P3500, P2500)



Notes)

- Circuit Board: AMP P3500 (NX814290) U,C,V,H,B
Circuit Board: AMP P2500 (NX814270) U,C,V,H,B
- Electrolytic Cap.
C201: AF 47.0 16V (FX802460)
C211,212: AF 4.7 100V (FX802440) P2500
C211,212: AF 4.7 160V (FX802450) P3500
 - Monolithic Capacitor
C202: MO 470P (FX802590)
 - Mylar Cap.
C203,204,213, 214: MA 0.1 100V K (FX802550)
C209,210: MA 0.0022 100V (FX802360)
 - Polypropylene Film Cap.
C205: NPP POLY 1500P (FX802600)
 - Electrolytic Cap.-BP
C206: AF 100.0 25V (FX802470)
 - Maica Cap.
C207: MI 22P 500V (FX802580) P2500
C207: MI 15P 500V (FX802570) P3500
C208: MI 5P 500V (FX802560)

7. Carbon Resistor

- R201: CF 270.0 1/4 J (HF755270)
R202: CF 47.0K 1/4 J (HF757470)
R204,208,209: CF 560.0 1/4 J (HF755560)
R205: CF 12.0K 1/4 J (HF757120)
R206: CF 1.0K 1/4 J (HF756100)
R207: CF 220.0 1/4 J (HF755220)
R210,211,212, 257: CF 68.0K 1/4 J (HF757680)
R213: CF 10.0 1/4 J (HF754100)
R216: CF 1.8K 1/4 J (HF756180)
R217: CF 470.0 1/4 J (HF755470)
R224,225: CF 82.0K 1/4 J (HF757680)
R252,253: CF 100.0K 1/4 J (HF758100)
R254: CF 180.0K 1/4 J (HF758180)
R255,256: CF 22.0K 1/4 J (HF757220)
R258: CF 220.0K 1/4 J (HF758220)

8. Metal Film Resistor

- R203: MF 1K 1/2 F (HX807690) P2500
R203: MF 820 1/2 F (HX807710) P3500
R218,219: MF 22.0K 1/2 F (HX807670)

9. Fuse Resistor

- R214,215: NFR 82.0 1/4 J (HX807790)
R220,221: NFR 10.0 1/4 J (HX807760)
R222,223,226,227, 228,229: NFR 220.0 1/4 J (HX807770)
R230,231: NFR 3.3K 1/4 J (HX807780)
R232,233,244,245, 267,268: NFR 4.7 1/4 J (HX807540)
R234,235,246,247, 269,270: NFR 100.0 1/4 J (HX807760)

10. Wire Wound Resistor

- R236,237,248,249, 271,272: CE 0.47 5W J (HX807730)
R251: CE 10.0 5W J (HX807740)
11. Metal Oxide Film Resistor
R250: MO 4.7 2W J (HX807720)

12. Transistor

- Q201,202,203, 210: 2SA1268 KTA970 (IX807300)
Q204,205, 209: 2SC3200 KTC2240BL (IX807160)
Q206: 2SA1546 (IX807290)
Q207: 2SC4001 (IX807310)
Q208,211: 2SC4370 KTC4370A (IX807170)
Q212: 2SA1659 (IX807340)
Q213,217,221: 2SD2155 (IX807350) P2500
Q213,215,217, 219,221: 2SC4029 (IX807360) P3500
Q214,218,222: 2SB1429 (IX807320) P2500
Q214,216,218,220, 222: 2SA1553 (IX807330) P3500

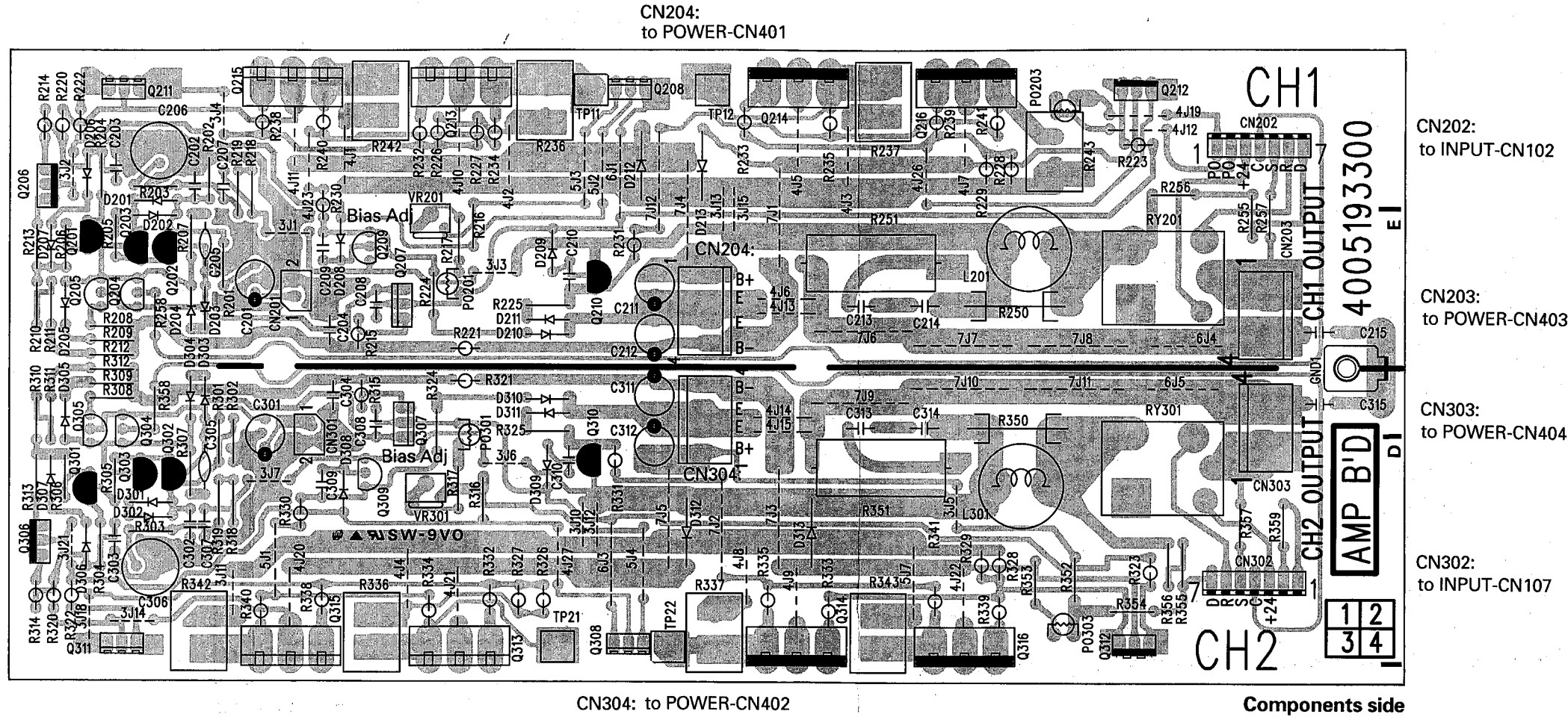
13. Diode

- D201,202,203,204, 205,206,207,208, 209: 1N4148 (IX807210)
D210,211: 1SS142 (IX807390)
D212,213: PS2010 (IX807370)

14. Coil

- L201: 2uH (GX803940)
15. Positive Thermistor
PO201: PTH59F04BE471TS (IX807420)
PO202: PTH9M04BE222TS2 (IX807410)
PO203: PTH9M04BH471TS (IX807430)
16. Relay
RY201: RLY31H42 (KX804080)
17. Terminal
TP1,2: CNT1P (BX800850)
18. Trimmer Potentiometer
VR201: 470B (HX807810) IDLE CURRENT ADJ.
19. Connector
CN201: MOX2P (LX803380)
CN203: 11434P (LX803420)
CN204: 11436P (LX803440)
20. Connector Assembly
CN202: 7P (LX803330)
21. Heat Sink
(BX800870)
22. Bind Head Tapping Screw
#2BTC 3X6 Y (EX803110)

• AMP Circuit Board (P1500)



Notes)

- Circuit Board: AMP P1500 (NX814250) U,C,V,H,B
- Electrolytic Cap.
C201,301: AF 47.0 16V (FX802460)
C211,212,311,312: AF 4.7 100V (FX802440)
 - Electrolytic Cap.-BP
C206,306: AF 100.0 25V (FX802470)
 - Monolithic Capacitor
C202,302: MO 470P (FX802590)
 - Mylar Cap.
C203,204,213,214,303,304,313,314: MA 0.1 100V K (FX802550)
C209,210,309,310: MA 0.0022 100V (FX802360)
 - Polypropylene Film Cap.
C205,305: NPP POLY 1500P (FX802600)
 - Maica Cap.
C207,307: MI 22P 500V P2500 (FX802580)
C208,308: MI 5P 500V (FX802560)
 - Ceramic Capacitor
C215,315: CE 0.01 50V (FX802530)

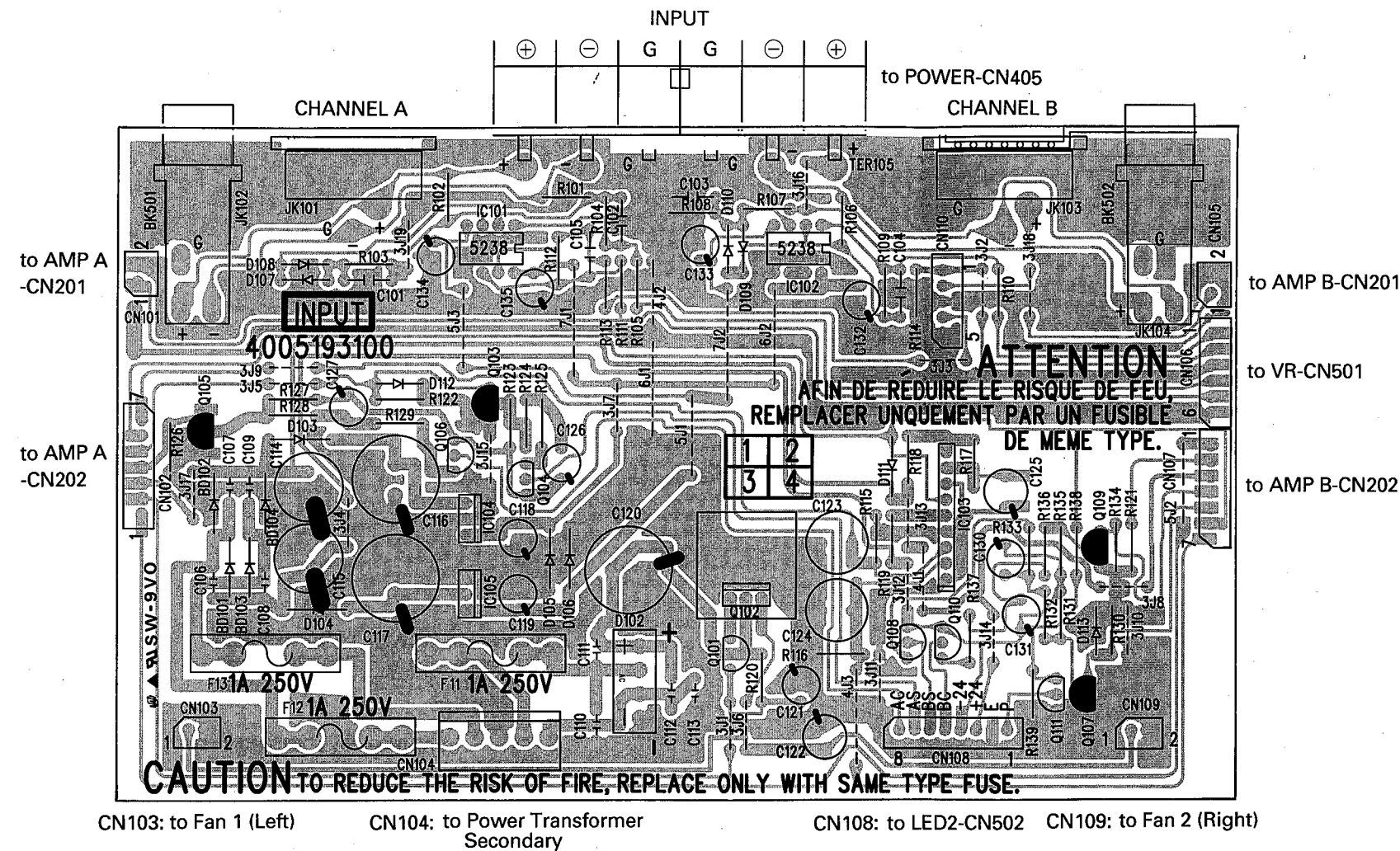
- Carbon Resistor
R201,301: CF 270.0 1/4 J (HF755270)
R202,210,211,212,302,310,311,312: CF 47.0K 1/4 J (HF757470)
R204,208,209,304,308,309: CF 560.0 1/4 J (HF755560)
R205,305: CF 12.0K 1/4 J (HF757120)
R206,306: CF 1.0K 1/4 J (HF756100)
R207,307: CF 120.0 1/4 J (HF755120)
R213,313: CF 10.0 1/4 J (HF754100)
R216,316: CF 1.8K 1/4 J (HF756180)
R217,317,359: CF 470.0 1/4 J (HF755470)
R224,225,324,325: CF 56.0K 1/4 J (HF757560)
R255,256,355,356: CF 22.0K 1/4 J (HF757220)
R257,357: CF 68.0K 1/4 J (HF757680)
R258,358: CF 220.0K 1/4 J (HF758220)
R352,353: CF 100.0K 1/4 J (HF758100)
R354: CF 180.0K 1/4 J (HF758180)
- Metal Film Resistor
R203,303: MF 1.2K 1/2 F (HX807700)
R218,219,318,319: MF 22.0K 1/2 F (HX807670)

- Fuse Resistor
R214,215,314,315: NFR 82.0 1/4 J (HX807790)
R220,221,320,321: NFR 10.0 1/4 J (HX807760)
R222,223,226,227,228,229,322,323,326,327,328,329: NFR 220.0 1/4 J (HX807770)
R230,231,330,331: NFR 3.3K 1/4 J (HX807780)
R232,233,238,239,332,333,338,339: NFR 4.7 1/4 J (HX807540)
R234,235,240,241,334,335,340,341: NFR 100.0 1/4 J (HX807760)
- Wire Wound Resistor
R236,237,242,243,336,337,342,343: CE 0.47 5W J (HX807730)
R251,351: CE 10.0 5W J (HX807740)
- Metal Oxide Film Resistor
R250,350: MO 4.7 2W J (HX807720)

- Transistor
Q201,202,203,210,301,302,303,310: 2SA1268 KTA970 (IX807300)
Q204,205,209,304,305,309: 2SC3200 KTC2240BL (IX807160)
Q206,306: 2SA1546 (IX807290)
Q207,307: 2SC4001 (IX807310)
Q208,211,308,311: 2SC4370 KTC4370A (IX807170)
Q212,312: 2SA1659 (IX807340)
Q213,215,313,315: 2SD2155 (IX807350)
Q214,216,314,316: 2SB1429 (IX807320)
- Diode
D201,202,203,204,205,206,207,208,209,301,302,303,304,305,306,307,308,309: 1N4148 (IX807210)
D210,211,310,311: 1SS142 (IX807390)
D212,213,312,313: PS2010 (IX807370)

- Positive Thermistor
PO201,301: PTH59F04BE471TS (IX807420)
PO302: PTH9M04BE222TS2 (IX807410)
PO203: PTH9M04BH471TS (IX807430)
- Coil
L201,301: 1.2uH (GX803950)
- Relay
RY201,301: HR703V DC24V (KX804090)
- Trimmer Potentiometer
VR201,301: 470B (HX807810) IDLE CURRENT ADJ.
- Terminal
TP11,12,21,22: CNT1P (BX800850)
- Connector
CN201,301: MOX2P (LX803380)
CN203,204,303,304: 11434P (LX803420)
- Connector Assembly
CN202: 7P (LX803330)
CN302: 7P (LX803340)
- Ground Terminal
GND1: (BX800840)

- **INPUT Circuit Board (P3500, P2500, P1500)**



Components side

Notes)

Circuit Board: INPUT (NX814920) U,C,V
Circuit Board: INPUT (NX814930) H,B

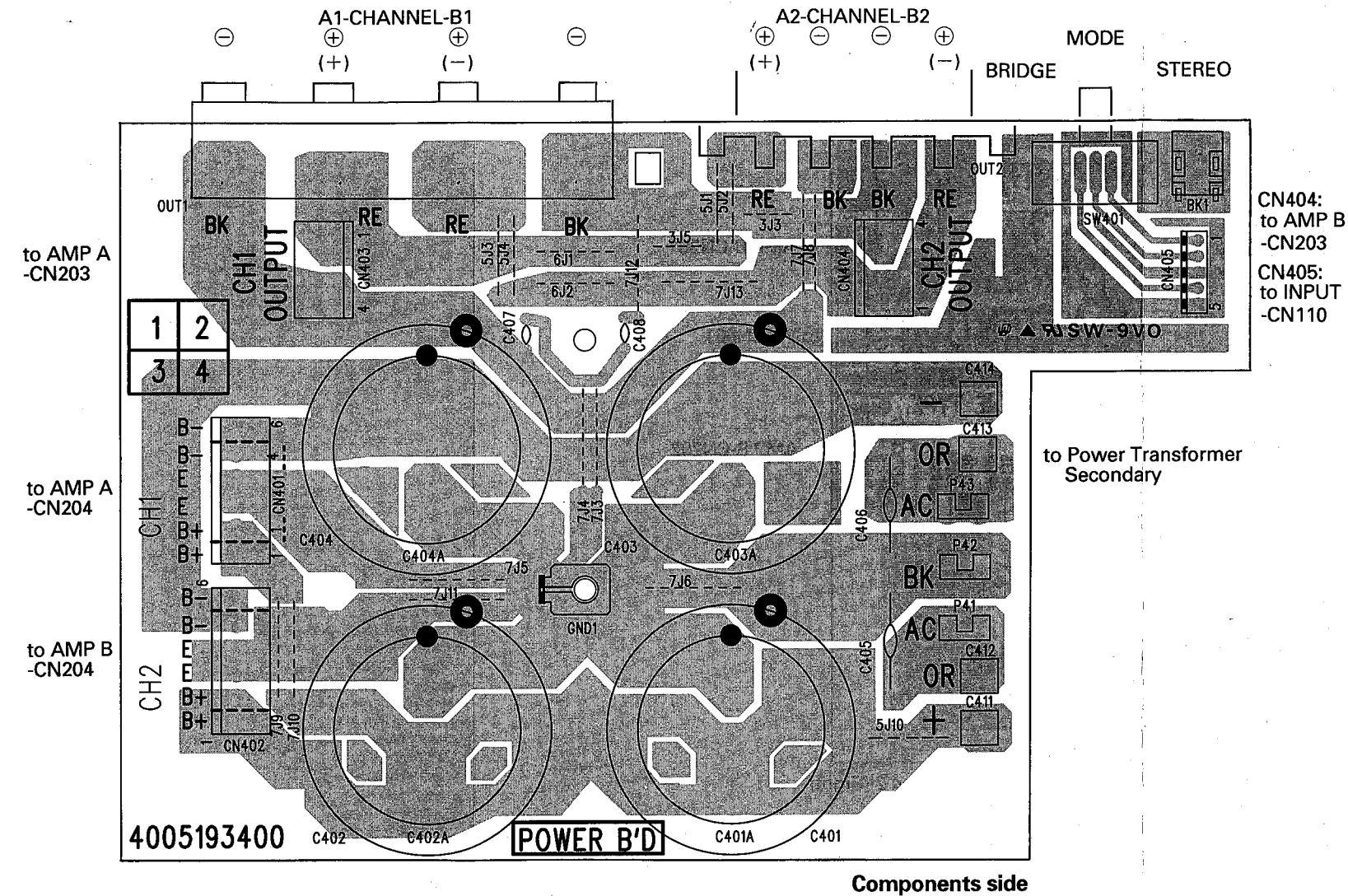
1. Ceramic Capacitor-SL
C101,102,103,
104: CE SL 56P 50V J (FG651560)
C105: CE SL 10P 50V J (FG651100)
2. Ceramic Capacitor
C106,107,108,109,
110,111,112,
113: CE F 4700P 500V Z (FX802540)
3. Electrolytic Cap.
C114,115: AF 220.0 50V (FX802420)
C116,117: RSA 470.0 35V (FX802410)
C118,119,121,132,
133,138,139: AF 10.0 50V (FX802110)
C120: RSA 1000.0 25V (FX802400)
C122,125: AF 100.0 25V (FX802120)
C126,127,131,
133: AF 0.22 50V (FX802430)
4. Electrolytic Cap.-BP
C123,124: AF 100.0 25V (FX802470)

5. Metal Film Resistor
- | | | |
|---------------|----|------------------------|
| R101,102,106, | | |
| 107: | MF | 15.0K 1/2 F (HX807660) |
| R103,104,108, | | |
| 109: | MF | 12.0K 1/2 F (HX807650) |
| R111,112,114: | MF | 51.0K 1/2 F (HX807680) |
6. Carbon Resistor
- | | | |
|-------------------|----|-------------------------|
| R105,110,113: | CF | 47.0 1/4 J (HF754470) |
| R115,116,122,123, | | |
| 125,127,129,130, | | |
| 131,133,135, | | |
| 137: | CF | 22.0K 1/4 J (HF757220) |
| R117: | CF | 100.0K 1/4 J (HF758100) |
| R118,119: | CF | 8.2K 1/4 J (HF756820) |
| R120: | CF | 680.0 1/4 J (HF755680) |
| R121: | CF | 560.0 1/4 J (HF755560) |
| R124,128,132, | | |
| 136: | CF | 220.0 1/4 J (HF755220) |
| R126,134: | CF | 10.0K 1/4 J (HF757100) |
| R138: | CF | 47.0K 1/4 J (HF757470) |
| R139: | CF | 6.8K 1/4 J (HF756680) |

7. IC
IC101,102: M5238P OP AMP (XA013A00)
IC103: TA7317P RELAY DRI. (IG034800)
IC104: 7815FA REG. 15 (XD853A00)
IC105: 7915FA REG.-15 (XD854A00)
8. Transistor
Q101,104,106,108,
110,111: 2SC3200 KTC2240BL (IX807160)
Q102: 2SC4370 KTC4370A (IX807170)
Q103,105,107,
109: 2SA1268 KTA970 (IX807300)
9. Diode
BD101,102,103,104,
D103,104,105,
106: 1N4006 LT1N4006 (IX807200)
D107,108,109,110,
112,113: 1N4148 (IX807210)
10. Diode Bridge
D102: KBP152 (IX807380)
11. Fuse
F11,12,13: 1A/250V (KX803910) U,C,V
1A/250V (KX804000) H,B

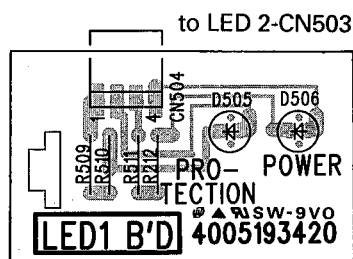
12. XLR, Jack, (F)
JK101,103: (LX803050) INPUT
13. Phone Connector
JK102,104: AM-8003 (LX803220) INPUT
14. Connector
CN101,103,105,
109: MOX2P (LX803380)
CN102,107: MOX7P (LX803410)
CN104: 11435P (LX803430)
CN106: MOX6P (LX803400)
CN108: MOX8P (LX803260)
CN110: MOX5P (LX803390)
15. Screw Terminal
TER105: 6P (LX803030) INPUT
16. Bracket, Jack
BK501,502: (AX814160)
17. Fuse Holder
CLIP (CX814150) H,B
18. Heat Sink
(BX800860)
19. Bind Head Tapping Screw
#2BTC 3X6 Y (EX803110)

• POWER Circuit Board (P3500, P2500, P1500)



- Notes)
- Circuit Board: POWER P3500 (NX814960)
 - Circuit Board: POWER P2500 (NX814950)
 - Circuit Board: POWER P1500 (NX814940)
 - 1. Electrolytic Cap.
 - C401,402,403,404: AF 6800 80V (FX802480) P1500
 - C401,402,403,404: AF 6800 100V (FX802510) P2500
 - C401,402,403,404: AF 9000 110V (FX802520) P3500
 - C405,406: POL 0.47 250 (FX802500)
 - 2. Ceramic Cap.
 - C407,408: CE 0.01 50V (FX802530)
 - 3. Slide Switch
 - SW401: SSP322SB011 (KX803990) MODE
 - 4. Bracket, PCB
 - BK1: (AX814170)
 - 5. Ground Terminal
 - GND1: (BX800840)
 - 6. DC terminal
 - OUT1: 4P (LX803020) CHANNEL A-1,B-1
 - 7. Screw Terminal
 - OUT2: 4P (LX803040) CHANNEL A-2,B-2
 - 8. Terminal
 - P41,42,43: 250T (LX803240)
 - 9. Connector
 - CN401,402: 11436P (LX803440)
 - CN403,404: 11434P (LX803420)
 - 10. Connector Assembly
 - CN405: 5P (LX803310)
 - ORANGE (LX803280)
 - RED (LX803300)
 - BLACK (LX803290)

• LED 1 Circuit Board (P3500, P2500, P1500)

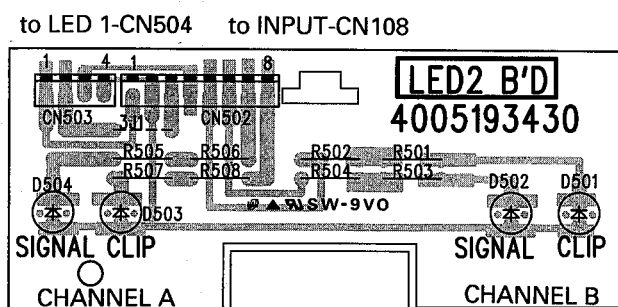


Components side

Notes)

- Circuit Board: LED1 (NX814970)
- Connector
CN504: MOLEX4PN (LX803370)
 - LED
D505,506: SLR-34UR R3 RE (IX807250)
POWER,PROTECTION
 - Carbon Resistor
R509,510,511,
512: CF 1.5K 1/4 J (HF756150)
 - LED Limiter
(IX807130)

• LED 2 Circuit Board (P3500, P2500, P1500)

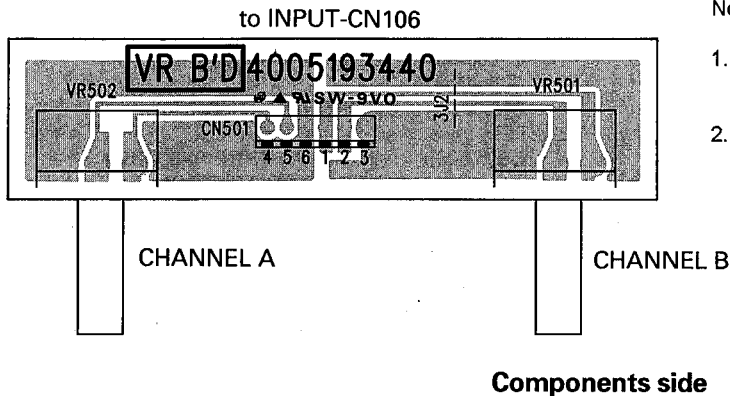


Components side

Notes)

- Circuit Board: LED2 (NX814980)
- Connector Assembly
CN502: 8P (LX803350)
CN503: 4P (LX803320)
 - LED
D501,503: SLR-34UR R3 RE (IX807250) CLIP
D502,504: EL 204GD R3 GR (IX807400) SIGNAL
 - Carbon Resistor
R501,502,503,504,
505,506,507,
508: CF 1.5K 1/4 J (HF756150)
 - LED Limiter
(IX807130)

• VR Circuit Board (P3500, P2500, P1500)



Notes)

- Circuit Board: VR (NX814990)
- Rotary Variable Resistor
VR501,502: RK16311605A6-5KA (HX807800) CHANNEL A,B
 - Connector
CN501: CON6P (LX803360)

Notes)

- Circuit Board: SWITCH P3500 (NX814890) U,C,V
Circuit Board: SWITCH P3500 (NX814900) H,B
- Ceramic Cap.
C501,502: CE 0.01 400V (FX802340)
 - Push Switch
(KX803820) POWER
 - Fuse
F1,2: 10A/125V (KX804050) U,C,V
4A/250V (KX804020) H,B
 - Fuse Holder
CLIP (CX814140) J,U,C,V
CLIP (CX814150) H,B
 - Tube, Capacitor
(FX802610) H,B
 - Terminal
P1,2,3,4,5: 250T (LX803240)

• SWITCH Circuit Board (P3500, P2500, P1500)

